

4

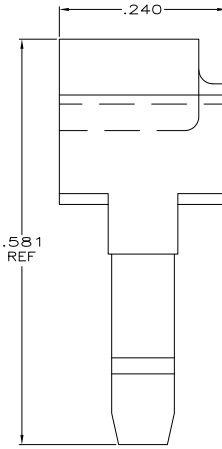
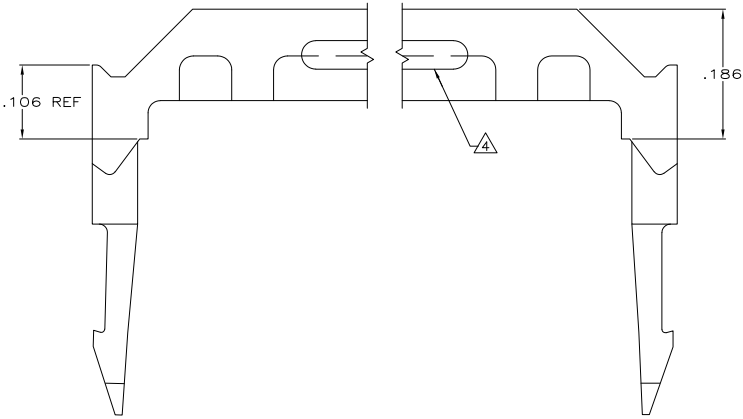
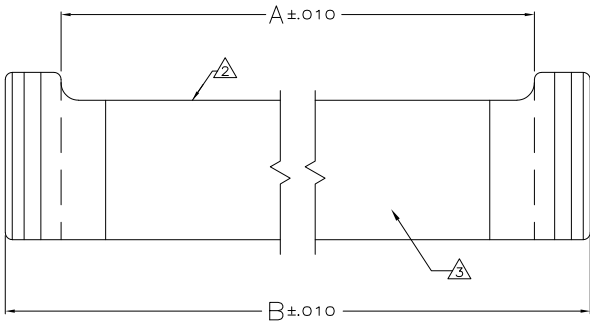
3

2

1

THIS DRAWING IS UNPUBLISHED. RELEASED FOR PUBLICATION  
 © COPYRIGHT - By - ALL RIGHTS RESERVED.

LOC	DIST	REVISIONS			
P	LTR	DESCRIPTION	DATE	BY	APPD
GP	00				
	H3	REVISED PER ECO-11-005033	23MAR11	RK	HMR



1.990	1.834	36	1-499252-5
1.290	1.134	22	1-499252-4
3.390	3.234	64	1-499252-3
1.690	1.534	30	1-499252-2
2.390	2.234	44	1-499252-1
1.390	1.234	24	1-499252-0
.890	.734	14	499252-9
.990	.834	16	499252-8
3.190	3.034	60	499252-7
1.890	1.734	34	499252-6
.690	.534	10	499252-5
2.690	2.534	50	499252-4
1.490	1.334	26	499252-3
1.190	1.034	20	499252-2
2.190	2.034	40	499252-1

B	A	NO OF POSN	PART NUMBER

- △ MATERIAL: FLAME RETARDANT THERMOPLASTIC, COLOR: BLACK.
- △ AMP TRADEMARK, MOLD CAVITY LETTER, AND MANUFACTURING ORIGIN (OPTIONAL) TO BE MOLDED ON THIS SURFACE.
- △ ALTERNATE LOCATION FOR AMP TRADEMARK AND CAVITY ID.
- △ CORING SLOTS IN BOTH SIDES AS INDICATED, OR IN UNDERSIDE OF PART.

THIS DRAWING IS A CONTROLLED DOCUMENT.

DESIGNED BY: J. GALLUCCI BC 2-23-90	DATE: 2-23-90
CHECKED BY: J. MOLL 3-5-90	DATE: 3-5-90
MATERIAL: PL	FINISH: -
DIMENSIONS: INCHES	OTHER FINISHES: -
0 PL C ± .005	1 PL C ± .005
1 PL C ± .005	2 PL C ± .005
2 PL C ± .005	3 PL C ± .005
3 PL C ± .005	4 PL C ± .005
4 PL C ± .005	5 PL C ± .005
5 PL C ± .005	6 PL C ± .005
6 PL C ± .005	7 PL C ± .005
7 PL C ± .005	8 PL C ± .005
8 PL C ± .005	9 PL C ± .005
9 PL C ± .005	10 PL C ± .005
10 PL C ± .005	11 PL C ± .005
11 PL C ± .005	12 PL C ± .005
12 PL C ± .005	13 PL C ± .005
13 PL C ± .005	14 PL C ± .005
14 PL C ± .005	15 PL C ± .005
15 PL C ± .005	16 PL C ± .005
16 PL C ± .005	17 PL C ± .005
17 PL C ± .005	18 PL C ± .005
18 PL C ± .005	19 PL C ± .005
19 PL C ± .005	20 PL C ± .005
20 PL C ± .005	21 PL C ± .005
21 PL C ± .005	22 PL C ± .005
22 PL C ± .005	23 PL C ± .005
23 PL C ± .005	24 PL C ± .005
24 PL C ± .005	25 PL C ± .005
25 PL C ± .005	26 PL C ± .005
26 PL C ± .005	27 PL C ± .005
27 PL C ± .005	28 PL C ± .005
28 PL C ± .005	29 PL C ± .005
29 PL C ± .005	30 PL C ± .005
30 PL C ± .005	31 PL C ± .005
31 PL C ± .005	32 PL C ± .005
32 PL C ± .005	33 PL C ± .005
33 PL C ± .005	34 PL C ± .005
34 PL C ± .005	35 PL C ± .005
35 PL C ± .005	36 PL C ± .005
36 PL C ± .005	37 PL C ± .005
37 PL C ± .005	38 PL C ± .005
38 PL C ± .005	39 PL C ± .005
39 PL C ± .005	40 PL C ± .005
40 PL C ± .005	41 PL C ± .005
41 PL C ± .005	42 PL C ± .005
42 PL C ± .005	43 PL C ± .005
43 PL C ± .005	44 PL C ± .005
44 PL C ± .005	45 PL C ± .005
45 PL C ± .005	46 PL C ± .005
46 PL C ± .005	47 PL C ± .005
47 PL C ± .005	48 PL C ± .005
48 PL C ± .005	49 PL C ± .005
49 PL C ± .005	50 PL C ± .005
50 PL C ± .005	51 PL C ± .005
51 PL C ± .005	52 PL C ± .005
52 PL C ± .005	53 PL C ± .005
53 PL C ± .005	54 PL C ± .005
54 PL C ± .005	55 PL C ± .005
55 PL C ± .005	56 PL C ± .005
56 PL C ± .005	57 PL C ± .005
57 PL C ± .005	58 PL C ± .005
58 PL C ± .005	59 PL C ± .005
59 PL C ± .005	60 PL C ± .005
60 PL C ± .005	61 PL C ± .005
61 PL C ± .005	62 PL C ± .005
62 PL C ± .005	63 PL C ± .005
63 PL C ± .005	64 PL C ± .005
64 PL C ± .005	65 PL C ± .005
65 PL C ± .005	66 PL C ± .005
66 PL C ± .005	67 PL C ± .005
67 PL C ± .005	68 PL C ± .005
68 PL C ± .005	69 PL C ± .005
69 PL C ± .005	70 PL C ± .005
70 PL C ± .005	71 PL C ± .005
71 PL C ± .005	72 PL C ± .005
72 PL C ± .005	73 PL C ± .005
73 PL C ± .005	74 PL C ± .005
74 PL C ± .005	75 PL C ± .005
75 PL C ± .005	76 PL C ± .005
76 PL C ± .005	77 PL C ± .005
77 PL C ± .005	78 PL C ± .005
78 PL C ± .005	79 PL C ± .005
79 PL C ± .005	80 PL C ± .005
80 PL C ± .005	81 PL C ± .005
81 PL C ± .005	82 PL C ± .005
82 PL C ± .005	83 PL C ± .005
83 PL C ± .005	84 PL C ± .005
84 PL C ± .005	85 PL C ± .005
85 PL C ± .005	86 PL C ± .005
86 PL C ± .005	87 PL C ± .005
87 PL C ± .005	88 PL C ± .005
88 PL C ± .005	89 PL C ± .005
89 PL C ± .005	90 PL C ± .005
90 PL C ± .005	91 PL C ± .005
91 PL C ± .005	92 PL C ± .005
92 PL C ± .005	93 PL C ± .005
93 PL C ± .005	94 PL C ± .005
94 PL C ± .005	95 PL C ± .005
95 PL C ± .005	96 PL C ± .005
96 PL C ± .005	97 PL C ± .005
97 PL C ± .005	98 PL C ± .005
98 PL C ± .005	99 PL C ± .005
99 PL C ± .005	100 PL C ± .005

CUSTOMER DRAWING

**TE** TE Connectivity

STRAIN RELIEF, RECEPTACLE CONNECTOR, FLAT CABLE, AMP-LATCH

SIZE: A2 CASE CODE: C=499252 DRAWING NO: 000779 RESTRICTED TO: H3

SCALE: 15:1 SHEET: 1 of 1 REV: H3