

THIS DRAWING IS UNPUBLISHED. RELEASED FOR PUBLICATION. BY TYCO ELECTRONICS CORPORATION. ALL RIGHTS RESERVED.

LOC	DIST	REVISIONS			
F	LN	DESCRIPTION	DATE	BY	APP'D
GP	00	0	RELEASED PER EC 0513-0288-05	03OCT05	BM WM

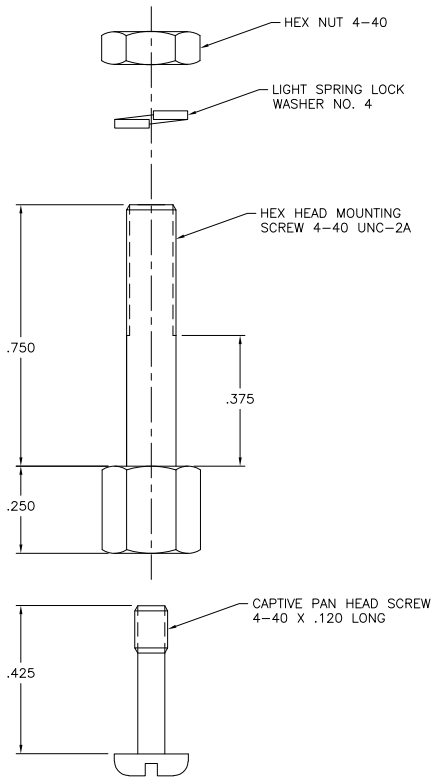
1. ALL DIMENSIONS SHOWN ARE FOR REFERENCE ONLY UNLESS OTHERWISE SPECIFIED.

2. 2 REQUIRED OF EACH COMPONENT PER KIT.



MATERIAL:

PAN HEAD SCREW: ZINC PLATED STEEL.
 LOCKWASHERS: PASSIVATED STAINLESS STEEL.
 HEX HEAD SCREW: BRASS WITH CHROME PLATE.
 HEX NUT: PASSIVATED STAINLESS STEEL.



AS SHOWN	5552563-1
DESCRIPTION	PART NUMBER

THIS DRAWING IS A CONTROLLED DOCUMENT.		DR B. MCMASTER 03OCT05	Tyco Electronics Corporation	
DIMENSIONS:		GW. W. MILLIMETERS 03OCT05	Harrisburg, PA 17105-3608	
INCHES		APND W. MILLIMETERS 03OCT05	NAME	
TOLERANCES UNLESS OTHERWISE SPECIFIED:		PRODUCT SPEC.		
0 PLC ±	1 PLC ±	APPLICATION SPEC.		
2 PLC ±	3 PLC ±	WEIGHT		
4 PLC ±	ANGLE ±	SIZE CAGE CODE DRAWING NO.		
MATERIAL		A2 00779 C-5552563		RESTRICTED TO
FINISH		CUSTOMER DRAWING		
		SCALE 5:1 SHEET 1 of 1 REV 0		

AMP 1471-9 REV 31MAR2000

5552563