

4

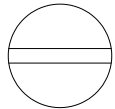
3

2

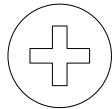
1

THIS DRAWING IS UNPUBLISHED. RELEASED FOR PUBLICATION
 © COPYRIGHT - By - ALL RIGHTS RESERVED.

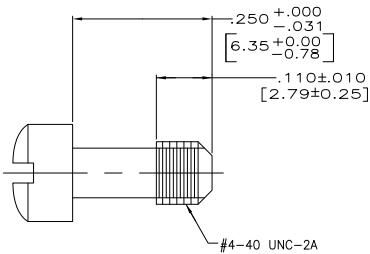
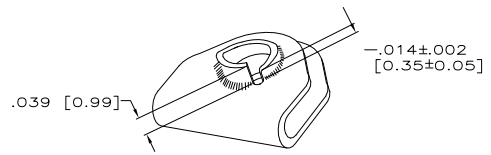
LOC		DIBT		REVISIONS		
P	LTR	DESCRIPTION	DATE	BY	APPD	
F1		REVISED PER ECO-11-005030	11MAR11	RK	HMR	



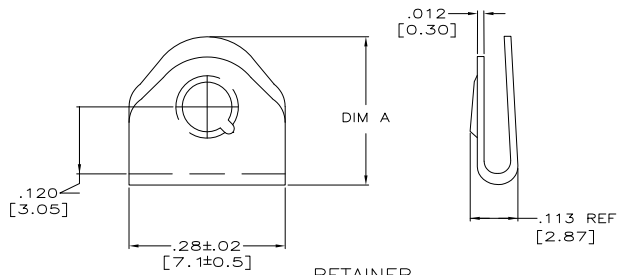
FILLISTER HEAD
REF



PHILLIPS HEAD
REF



SCREW, (TYPE; SEE TABLE)
 ▲ OR ▲
 #4-40 UNC-2A



RETAINER
 ▲ OR ▲

- ▲ MAT'L: STAINLESS STEEL PER ASTM-A-582
FINISH: PASSIVATED PER SAE-AMS-2700
 - ▲ MAT'L: STAINLESS STEEL PER QQ-S-766
FINISH: PASSIVATED PER SAE-AMS-2700
 - ▲ MAT'L: BRASS PER ASTM-B-16
FINISH: GOLD PLATE PER ASTM-B-488
OVER COPPER PER MIL-C-14550
 - ▲ MAT'L: BeCu PER QQ-C-530
FINISH: GOLD PLATE PER ASTM-B-488
OVER COPPER PER MIL-C-14550
5. PARTS ARE PACKAGED UNASSEMBLED.

PHILLIPS HEAD	.240±010 [6.10±0.25]	-	AS SHOWN ▲▲	211883-7
FILLISTER HEAD	.240±010 [6.10±0.25]	-	AS SHOWN ▲▲	211883-6
FILLISTER HEAD	.265±015 [6.73±0.38]	M24308/25-6P	AS SHOWN ▲▲	211883-5
FILLISTER HEAD	.265±015 [6.73±0.38]	-	AS SHOWN ▲▲	211883-1
SCREW HEAD TYPE	DIM A	MILITARY PART NO	DESCRIPTION	PART NO.

THIS DRAWING IS A CONTROLLED DOCUMENT. **DR** C.C. THOMAS 2-11-03
CHK D. MILLER 2-11-03
APPD D. MILLER 2-11-03

TE TE Connectivity

NAME: SCREW-LOCK ASSEMBLY, MALE, AMPLIMITE, KIT

APPLICATION SPEC: -
 WEIGHT: -
 CUSTOMER DRAWING

SIZE: A2 CAGE CODE: 00779 DRAWING NO: C=211883 RESTRICTED TO: -
 SCALE: 8:1 SHEET: 1 of 1 REV: F1