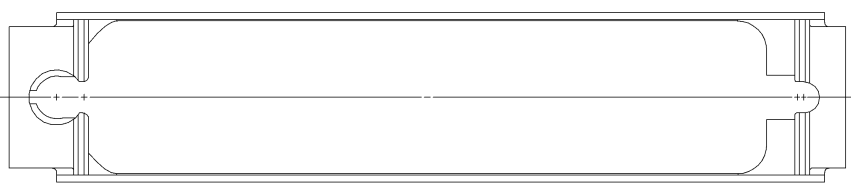
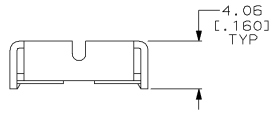
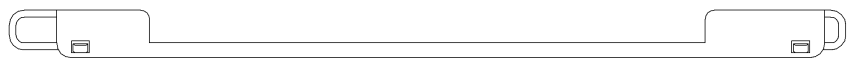
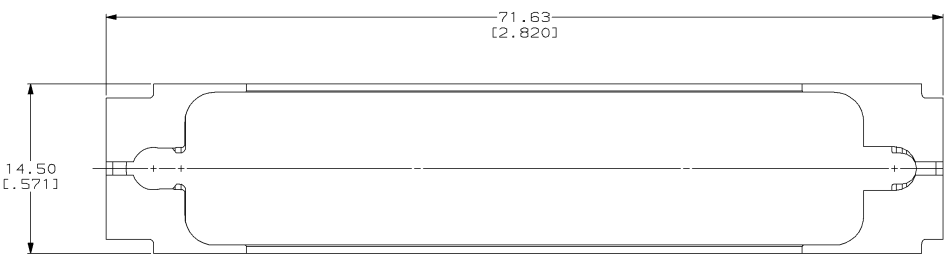


DRAWING MADE IN THIRD ANGLE PROJECTION  
 THIS DRAWING IS UNPUBLISHED. RELEASED FOR PUBLICATION  
 © COPYRIGHT 19 BY AMP INCORPORATED. ALL INTERNATIONAL RIGHTS RESERVED.

LOC		DIST		REVISIONS				DATE	APPO
P	F	ZONE	LTR	DESCRIPTION	DATE	APPO			
			0	RLSE PER NPR 2639, WAS 89-5898-21	01/03/90				
			A	REV PER EC 0020-972-93	02/27/93			SB	



**METRIC**

DO NOT SCALE PRINT. UNLESS SPECIFIED DIMENSIONS IN mm [INCHES] TOLERANCES ON + 2 PLC DEC ± 0.13 (0.005) 3 PLC DEC ± - ANGLES ± -		DR 1-3-90 L.SIPE	749997-1 PART NO	
MATERIAL STAINLESS STEEL PER ASTM A167	CHK 1-5-90 R.STONE	APPD 1-11-90 B.TAYLOR	AMP AMP INCORPORATED Harrisburg, Pa. 17105	
FINISH -	APPD 1-9-90 J.ASSINI	PRODUCT SPEC -	NAME SLIDE LATCH, SIZE 5, 50 POSN, REINFORCED, UNIVERSAL, ONE PIECE, AMPLIMITE®	
	APPLICATION SPEC IS6551	SIZE C	CAGE CODE 00779	DRAWING NO 749997
	WEIGHT -	SCALE 4:1	SHEET 1 OF 1	

CUSTOMER DRAWING