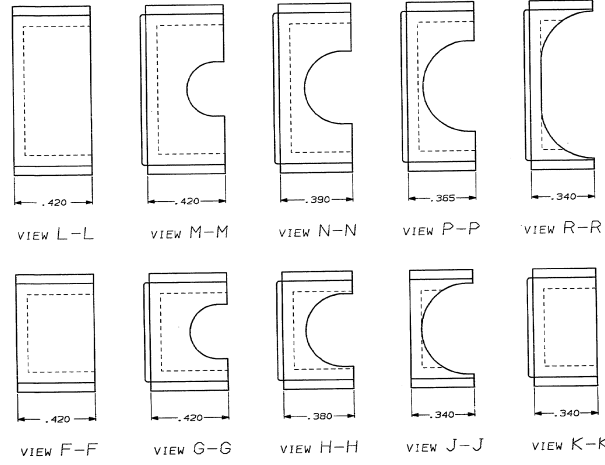
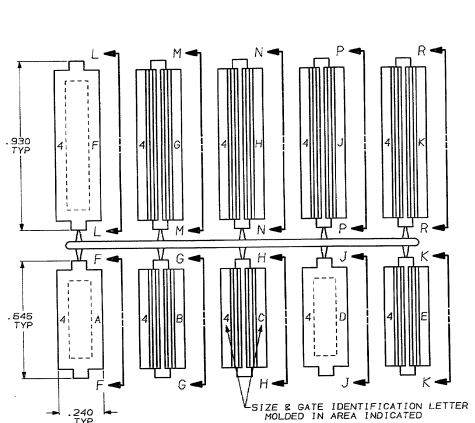


DRAWING MADE IN THIRD ANGLE PROJECTION
 THIS DRAWING IS UNPUBLISHED. RELEASED FOR PUBLICATION.
 COPYRIGHT © BY AMP INCORPORATED, AMPLIMITED, PA. ALL INTERNATIONAL RIGHTS RESERVED. AMP PRODUCTS MAY BE COVERED BY U.S. AND FOREIGN PATENTS AND/OR PATENTS PENDING.

LOC		DIST		REV		REVISIONS	
ZONE	LTR	NO	DATE	DESCRIPTION	DATE	APPD	BY
				X			REVISED & REDRAWN ECH-1465



180° EXIT GATES

90° EXIT GATES

1. GATES ARE SHIPPED ATTACHED TO RUNNER.

GATE	CABLE DIA	REF
4-K	.540	
4-J	.400	
4-I	.320	
4-H	.290	
4-G	.270	
4-F		
4-E		
4-D	.405	
4-C	.390	
4-B	.255	
4-A	.250	

AS SHOWN	202425-1
REMARKS	PART NUMBER

STANDARD DIMENSIONS SPECIFIED UNLESS OTHERWISE NOTED		AMP INCORPORATED	
DR: <i>John P. De</i>	DATE: <i>9/16/86</i>	AMP INCORPORATED	17105
2 PL DEC 4 -	3 PL DEC 2.005	NAME:	CABLE GATES, FOR SIZE 4, 90° & 180° EXIT, AMPLIMITE®
MATERIAL:	POLYPROPYLENE	FINISH:	COLOR: BLACK
APPRO: <i>John P. De</i>	DATE: <i>9/16/86</i>	SIZE:	D
PRODUCT SPEC:		FSOH NO:	00779
APPLICATION SPEC:		DRAWING NO:	207475
WEIGHT:		SCALE:	NTS
		SHEET:	1 OF 1

CUSTOMER DRAWING

AMP 1756-2 REV 10-84