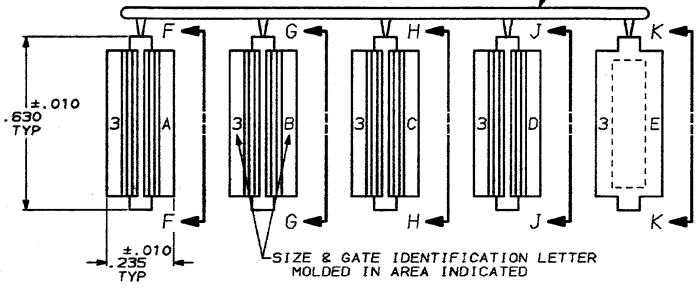


DRAWING MADE IN THIRD ANGLE PROJECTION

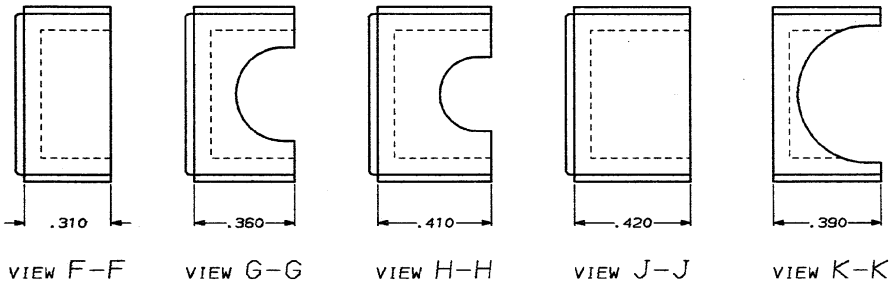
THIS DRAWING IS UNPUBLISHED. RELEASED FOR PUBLICATION
 © COPYRIGHT 19 BY AMP INCORPORATED, HARRISBURG, PA. ALL INTERNATIONAL RIGHTS RESERVED. AMP PRODUCTS MAY BE COVERED BY U.S. AND FOREIGN PATENTS AND/OR PATENTS PENDING.

REV	LOG	DIST	ZONE	LTR	DESCRIPTION	DATE	APPROVED
16	BD	39		A	REVISED & REDRAWN ECN-1465	8-18-88	-
				B	REVISED ECN-2064	3-16-88	-
				C	REVISED ECN-5564	11-15-88	RM
				D	REV PER ECN B05923	10-18-88	RM

RUNNER MAY APPEAR ON EITHER SIDE.



1. GATES ARE SHIPPED ATTACHED TO RUNNER.



GATE	CABLE DIA REF
3-E	.390
3-D	
3-C	.215
3-B	.360
3-A	.195

UNLESS OTHERWISE SPECIFIED DIMENSIONS ARE IN INCHES TOLERANCES ON + 2 PL DEC ± - 3 PL DEC ± .005 ANGLES ± -	DR 9-16-86 S. WELDON CHK 9-16-86 C. RICHARD APPO 9-16-86 S. SCHIEFERLY APPO 9-16-86 V. KUMAR PRODUCT SPEC - APPLICATION SPEC - WEIGHT -
MATERIAL: POLYPROPYLENE COLOR: BLACK	FINISH -

207348-1 PART NUMBER	
AMP INCORPORATED Harrisburg, Pa. 17105	
NAME CABLE GATES, FOR SIZE 3, 90° & 180° EXIT, AMPLIMITE™	
SIZE C	FSCN NO 00779
DRAWING NO 207348	
SCALE NTS	SHEET 1 OF 1

CUSTOMER DRAWING

207348