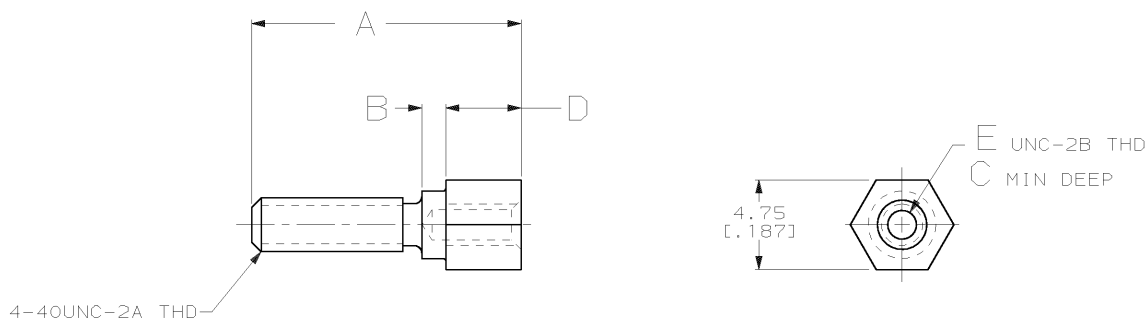


DRAWING MADE IN THIRD ANGLE PROJECTION

THIS DRAWING IS UNPUBLISHED. RELEASED FOR PUBLICATION, 19  
 © COPYRIGHT 19 BY AMP INCORPORATED. ALL INTERNATIONAL RIGHTS RESERVED.

LOC	DIST	P	F	ZONE	LTR	REVISIONS	DATE	APPD
BD	95				J	REACTIVATED -6 & OBS -5 & -7 PER EC 0G40-458-98	30 NOV 98	RB
					K	REACTIVATED -1 PER EC 0G40-198-99	17 MAY 99	JO



OBSOLETE	4-40	3.99 [.157]	3.30 [.130]	1.27 [.050]	18.29 [.720]	749066-7
OBSOLETE	2-56	4.19 [.165]	3.86 [.152]	1.07 [.042]	14.27 [.562]	749066-6
OBSOLETE	2-56	3.71 [.146]	3.58 [.141]	1.27 [.050]	13.92 [.548]	749066-5
OBSOLETE	2-56	3.99 [.157]	3.68 [.145]	1.27 [.050]	33.02 [1.300]	749066-4
OBSOLETE	2-56	3.99 [.157]	3.86 [.152]	1.27 [.050]	9.65 [.380]	749066-3
OBSOLETE	2-56	3.99 [.157]	3.86 [.152]	1.27 [.050]	14.27 [.562]	749066-2
OBSOLETE	2-56	3.99 [.157]	3.86 [.152]	1.27 [.050]	14.27 [.562]	749066-1
	E	D	C	B	A	PART NO

DO NOT SCALE PRINT. UNLESS SPECIFIED DIMENSIONS IN mm (INCHES) TOLERANCES ON: 2. PLC DEC ± 0.13 (.005) 3. PLC DEC ± - ANGLES ± 0°30'	DR 11-21-88 JACK ROOT CHK 12-1-88 M. WATERS APPD 12-1-88 D. GRIESENER APPD 12-1-88 R. WHITEMAN PRODUCT SPEC - APPLICATION SPEC - WEIGHT -	AMP INCORPORATED Harrisburg, Pa. 17105  NAME SCREWLOCK, FEMALE, .050 SERIES AMPLIMITE™  SIZE B FSCM NO 00779 DRAWING NO 749066 SCALE 5:1 SHEET 1 OF 1
--	---	--

AMP 1470-15 REV 3-87  
 17-MAY-99 10:39:11 amp34993 /home/ssrv026d/dsk04/dept4023/amp34993/ednmod

CUSTOMER DRAWING