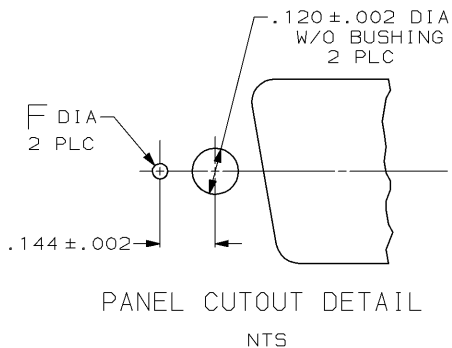
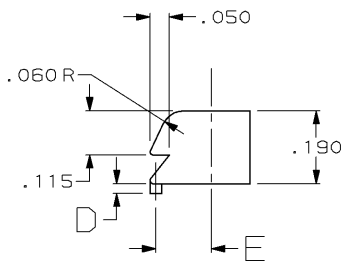
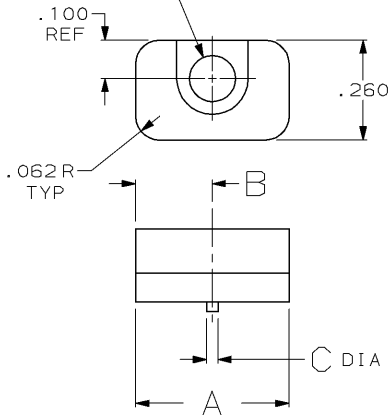


DRAWING MADE IN THIRD ANGLE PROJECTION

THIS DRAWING IS UNPUBLISHED. RELEASED FOR PUBLICATION, 19  
 © COPYRIGHT 19 BY AMP INCORPORATED. ALL INTERNATIONAL RIGHTS RESERVED.

| LOC | DIST | REVISIONS |     |                           |           |      |
|-----|------|-----------|-----|---------------------------|-----------|------|
| P   | F    | ZONE      | LTR | DESCRIPTION               | DATE      | APPD |
|     |      | C         |     | REDRAWN ON CAD            | 4-9-90    | -    |
|     |      | D         |     | OBS -6 PER EC 0420-145-96 | 12 SEP 97 | SB   |

.120 DIA THRU HOLE WITH  
.191 WIDE X .110 DEEP SLOT.



|          |      |      |      |      |                 |          |      |      |             |
|----------|------|------|------|------|-----------------|----------|------|------|-------------|
| OBSOLETE | .050 | .136 | .055 | .045 | BULK PACKAGED   | 2        | .200 | .400 | 745245-7    |
| OBSOLETE | .040 | .144 | .025 | .030 | BULK PACKAGED   | 2        | .265 | .530 | 745245-6    |
|          | .040 | .144 | .025 | .030 | ONE KIT PER BAG | 2        | .265 | .530 | 745245-5    |
|          |      |      |      |      | BULK PACKAGED   | 2        | .200 | .400 | 745245-3    |
|          |      |      |      |      | ONE KIT PER BAG | 2        | .200 | .400 | 745245-2    |
|          | F    | E    | D    | C    | PACKAGING       | QUANTITY | B    | A    | PART NUMBER |

DO NOT SCALE PRINT.  
UNLESS SPECIFIED  
DIMENSIONS IN INCHES  
TOLERANCES ON:  
2 PLC DEC ± .005  
3 PLC DEC ± .005  
ANGLES ±

MATERIAL  
ZINC

FINISH  
-

DR 4-8-90  
J GALLICCI BB  
CHK 6-15-90  
W LENER  
APPD 7-11-90  
J WESTMAN  
APPD 7-16-90  
J ASSINI  
PRODUCT SPEC  
-  
APPLICATION SPEC  
-  
WEIGHT -

**AMP** AMP INCORPORATED  
Harrisburg, Pa. 17105

NAME  
LATCHING BLOCK, AMPLIMATE™

SIZE **B** FSCN NO 00779 DRAWING NO 745245  
SCALE 4:1 SHEET 1 OF 1

AMP 1470-15 REV 3-88  
12-SEP-97 09:16:23 amp34723 /home/ssw/v026/dsk04/dsp14423/amp34723/edmod

CUSTOMER DRAWING