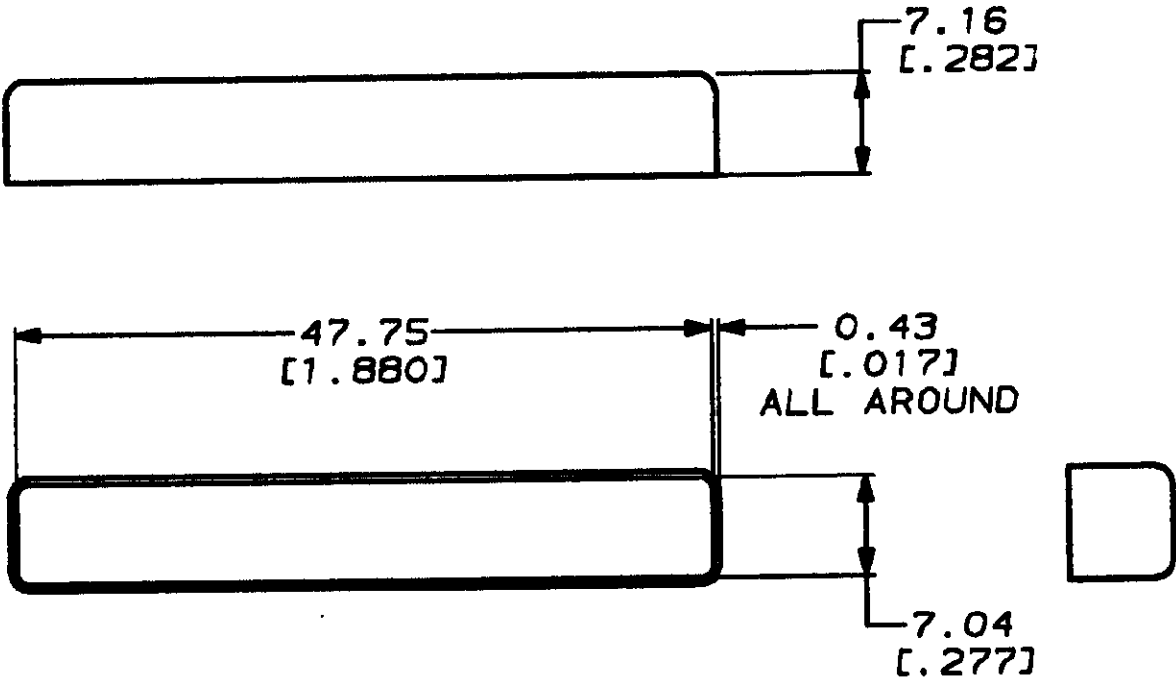


THIS DRAWING IS A CONTROLLED DOCUMENT FOR AMP INCORPORATED.  
IT IS SUBJECT TO CHANGE AND THE CONTROLLING ENGINEERING  
ORGANIZATION SHOULD BE CONTACTED FOR THE LATEST REVISION.

DRAWING MADE IN THIRD ANGLE PROJECTION

LDC	DIST	P	F	REVISIONS			
				LTR	DESCRIPTION	DATE	APPROVED
BD	95			0	RELEASED WAS 92-4640-8-1, NPR 4338	08/02/92	TS

THIS DRAWING IS UNPUBLISHED. BY AMP INCORPORATED. ALL INTERNATIONAL RIGHTS RESERVED. © COPYRIGHT 19



786531-1
PART NO

DO NOT SCALE PRINT.  
UNLESS SPECIFIED  
DIMENSIONS IN mm (IN)  
TOLERANCES ON:  
S/PLC DEC ± 0.13 (.005)  
S/PLC DEC ± -  
ANGLES ± -  
MATERIAL  
RED POLYSTYRENE  
FINISH  
-

DR 08/02/92  
J. McCLINTON  
CHK 9-15-92  
R STONE  
APPD 9-21-92  
T SPANLER  
APPD 9-21-92  
J ASSINI  
PRODUCT SPEC  
-  
APPLICATION SPEC  
-  
WEIGHT -

**AMP** AMP Incorporated  
Harrisburg, PA 17105-3608

NAME  
DUST COVER, .025 $\phi$  PLUG,  
.050 SERIES AMPLIMITE™

SIZE A	CAGE CODE 00779	DRAWING NO C=786531
SCALE 2:1	SHEET 1 of 1	