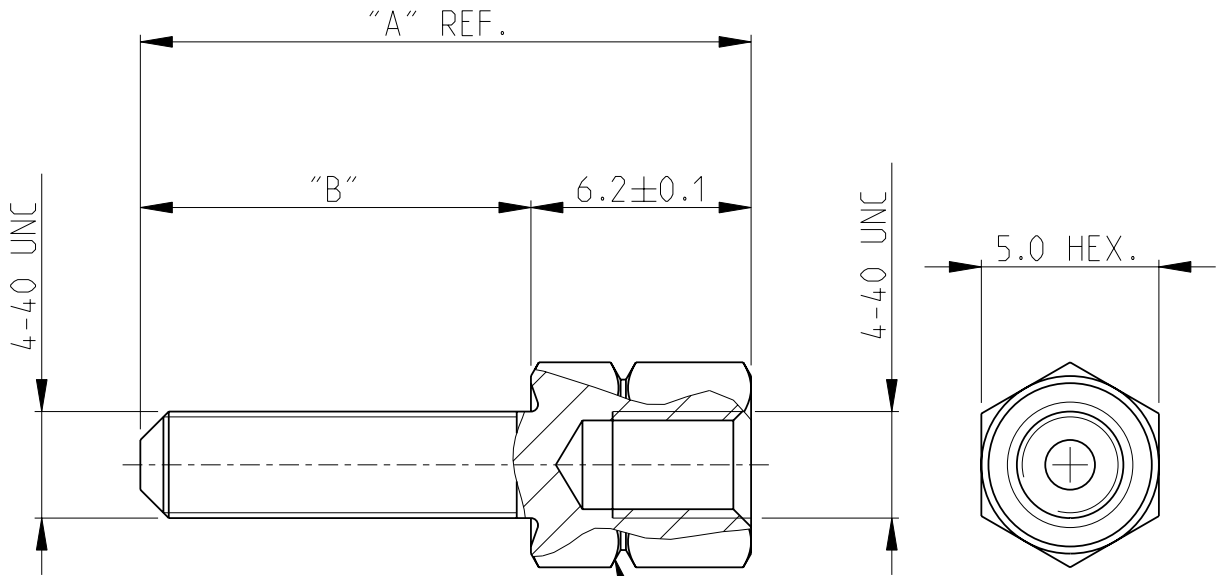


LOC	DIST	REVISIONS					
A1	-	P	LTR	DESCRIPTION	DATE	DWN	APVD
		F		H-9720	21APR92	SM	CVT
		G1		REDRAWN	6JUN05	ACK	MS
		G2		REVISED PER ECO-10-00045	12JAN10	KK	AEG
		J		ECR-11-005934	28MAR11	RK	KMA



NOTE

- 1 OBSOLETE PARTS: OBSOLETE CIS STERMLINING PER D.RENAUD/D.SINSI
2. MAXIMUM MOUNTING TORQUE 0.6 Nm.

9,2	3,0	PLAIN	ARCAP	3-828 102-3
9,2	3,0	TINPLATED	BRASS	3-828 102-1
17,2	11,0	PLAIN	ARCAP	2-828 102-3
17,2	11,0	TINPLATED	BRASS	2-828 102-1
15,9	9,7	PLAIN	ARCAP	1-828 102-3
15,9	9,7	TINPLATED	BRASS	1-828 102-1
11,2	5,0	PLAIN	ARCAP	828 102-3
11,2	5,0	TINPLATED	BRASS	828 102-1
DIM. "A"	DIM. "B"	FINISH	MATERIAL	PARTNUMBER

1 OBSOLETE

2005

RELEASED FOR PUBLICATION

ALL RIGHTS RESERVED. TYCO ELECTRONICS CORPORATION

COPYRIGHT 2000

THIS DRAWING IS UNCLASSIFIED

DIMENSIONS: mm	DWN G.ACKERMANN 06JUN2005	MATERIAL -	FINISH -
TOLERANCES UNLESS OTHERWISE SPECIFIED: 0 PLC ± 1 PLC ±0.2 2 PLC ±0.2 3 PLC ± 4 PLC ± ANGLES ±2°	CHK M.SCHAARSCHMIDT 06JUN2005		
	APVD G.FELDMEIER 06JUN2005		
	PRODUCT SPEC -	NAME SCREWLOCK, FEMALE HD-SERIES BEFESTIGUNGSSCHRAUBE, BUCHSENLEISTE	
	APPLICATION SPEC -	SIZE A 4	CAGE CODE 00779
	WEIGHT -	DRAWING NO C=828102	RESTRICTED TO -
CUSTOMER DRAWING		SCALE 5:1	SHEET 1 OF 1
			REV J