

IEC Appliance Inlet C8 with Line Switch 1-pole



CMF1

C8



70° C

**Description**

- Panel Mount:
Screw-on mounting on PCB, from top or bottom
- 2 Functions:
Appliance Inlet Protection class II, Line Switch 1-pole
- For PCB mounting

Characteristics

- Easy mounting with center bolt and snapper or screwed on PCB or housing
- Electrical connection done on the PCB
- Bi-positioning of the switch from left or right side, Standard CMF with switch on right side
- With or without rear-side insulation cover
- Qualified for use in equipment according IEC/EN 60950

Other versions on request

- Line switch with other rocker marking
- Line switch on left of inlet

References

Alternative: polarized version or protection class I [CMF2](#), [CMF5](#); [CMF3](#), [CMF6](#)

Weblinks

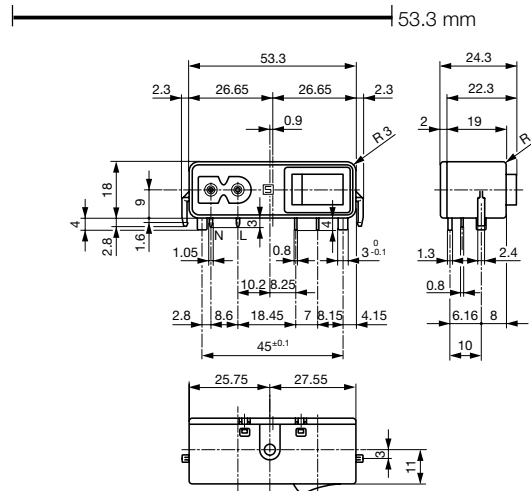
[General Product Information](#), [Approvals](#), [RoHS](#), [CHINA-RoHS](#), [Mating Connectors](#), [e-Store](#), [SCHURTER-Stock-Check](#), [Distributor-Stock-Check](#), [Accessories](#)

Technical Data

Ratings IEC	2.5A / 250VAC; 50Hz
Ratings UL/CSA	6A / 125VAC; 60Hz
Dielectric Strength	> 2.3kVAC between L-N > 2.8kVAC between L/N-PE (1 min/50Hz)
Allowable Operation Temp.	-25 °C to 70 °C
Degree of Protection	from front side IP 40 acc. to IEC 60529
Protection Class	Suitable for appliances with protection class 2 acc. to IEC 61140
Terminal	PCB 1.6 mm
Material: Housing	Thermoplastic, black, UL 94V-0

Appliance Inlet	C8 acc. to IEC/EN 60320-1, UL 498, CSA C22.2 no. 42 (for cold conditions) pin-temperature 70 °C, 2.5A, Protection Class 2
Line Switch	Rocker switch 1-pole, non-illuminated, acc. to IEC 61058-1 Technical details

Dimensions

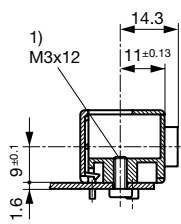


with insulation cover

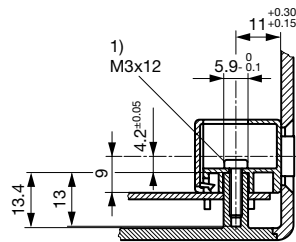
The size of the mounting cut-out can be selected as required.

Fixation on PCB or housing from below

Fixation on PCB or housing from above



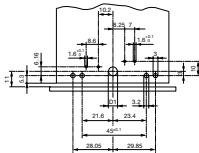
1) self tapping screw



1) self tapping screw

Drilling diagrams

CMF1 and CMF2 (C8)



Variants

Standard CMF with switch on right side

Connectors	Mounting side	Cover	Ground terminal	Ground terminal direction	Order Number
C8	from below		-	-	CMF1.1031.12
C8	from below	●	-	-	CMF1.1131.12
C8	from top		-	-	CMF1.1011.12
C8	from top	●	-	-	CMF1.1111.12

Packaging unit 50 Pcs

Mating Outlets/Connectors

Category / Description

Power Cord Overview complete



Power Cord with IEC Connector C7, Straight 70°C	2510
Power Cord with IEC Connector C7, Angled	2511
Power Cord with IEC Plug C7, Angled	2514
Power Cord with IEC Connector C7, Straight 70°C	4810

[Power Cord further types to CMF1, CMF4](#)