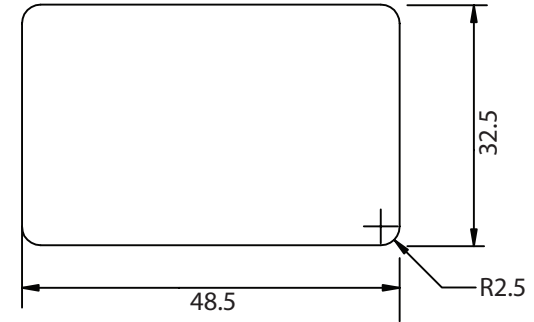
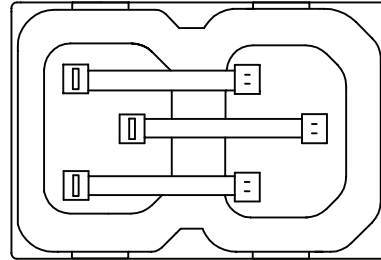
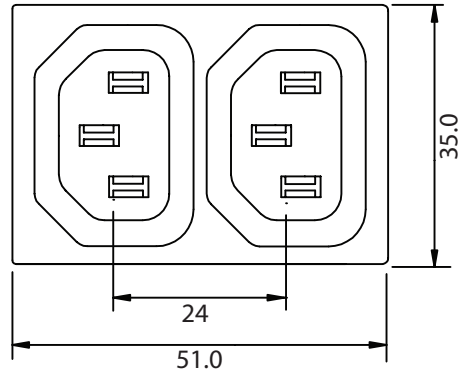
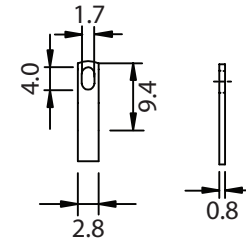
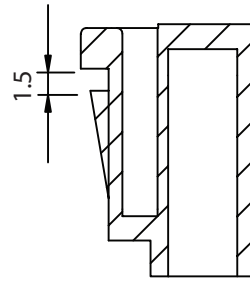
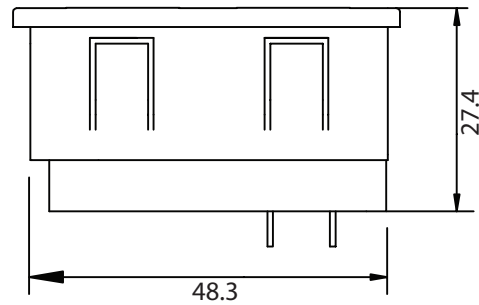


THESE DRAWINGS ARE THE PROPERTY OF QUALTEK ELECTRONICS AND NOT TO BE REPRODUCED FOR OR COMMUNICATED TO A THIRD PARTY WITHOUT THE EXPRESS WRITTEN PERMISSION OF AN OFFICER OF QUALTEK ELECTRONICS.

| REVISION |                 |          |          |
|----------|-----------------|----------|----------|
| REV.     | DESCRIPTION     | DATE     | APPROVED |
| B        | RoHS Compliancy | 06-01-06 | DP       |
|          |                 |          |          |
|          |                 |          |          |



PANEL CUTOUT



**CONTROLLED**

NOTES:

RATING:

UL,CSA: 15A 250V AC  
 VDE: 10A 250V AC  
 PANEL THICKNESS: 1.5mm  
 APPROVALS: UL,CSA,VDE  
 RoHS COMPLIANT

| Dim range (mm) | Tolerance +/- (mm) | Qualtek Electronics Corp.<br>PPC DIVISION |                 |                 |
|----------------|--------------------|---|-----------------|-----------------|
|                |                    | Part Number:                              | 742W-15/04      | RoHS Compliant  |
| 0-1            | 0.15               | Description: AC RECEPTACLE                |                 |                 |
| 1-6            | 0.20               |   |                 |                 |
| 6-18           | 0.30               | UNIT: mm                                  | REV. B          |                 |
| 18-50          | 0.50               |   | Approved / Date |                 |
| 50-120         | 0.70               | Drawn / Date                              | Checked / Date  | Approved / Date |
| 120-250        | 0.90               | B.ZHANG<br>09-27-04                       | 09-27-04        | JJH / 09-27-04  |
| 250-500        | 1.20               |   |                 |                 |