

## IEC Appliance Inlet C14 with Fuseholder 1-pole

Types 6200, 6205

Types 6200, 6205



1-pole

Type 6202: for protection class II

1-pole

**Description**

- Panel Mount:  
Screw-on version from front or rear side, snap-in version from front side
- 2 Functions:  
Appliance Inlet Protection class I, Fuseholder for fuse-links 5 x 20 mm 1-pole
- Solder terminals or quick connect terminals

**Approvals**

- VDE Certificate Number: 40011091
- UL File Number: E93617
- CSA File Number: 38456

**Characteristics**

- All single elements are already wired
- Plug removal necessary for fuse-link replacement  
The fuseholder is accessible from the equipment front  
With spare fuse compartment
- Qualified for use in equipment according IEC/EN 60950

**Other versions on request**

- Types for rivet mounting available upon request

**References**Alternative: version with line filter [5200](#)Alternative: Fuseholder 2-pole [6220](#)**Weblinks**

[General Product Information](#), [Approvals](#), [RoHS](#), [CHINA-RoHS](#), [Mating Connectors](#), [e-Store](#), [SCHURTER-Stock-Check](#), [Distributor-Stock-Check](#), [Accessories](#)

**Technical Data**

Ratings IEC	10A / 250VAC; 50Hz
Ratings UL/CSA	10A / 250VAC; 60Hz
Dielectric Strength	> 2 kVAC between L-N > 2 kVAC between L/N-PE (1 min/50Hz)
Allowable Operation Temp.	-25°C to 70°C
Degree of Protection	from front side IP 40 acc. to IEC 60529
Protection Class	Suitable for appliances with protection class 1 acc. to IEC 61140
Terminal	Solder terminals or quick connect terminals, tin-plated
Panel Thickness s	Screw: max 6 mm Mounting screw torque max 0.5 Nm Snap-in: 1/1.5/2/2.5/3 mm
Material: Housing	Thermoplastic, black, UL 94V-0

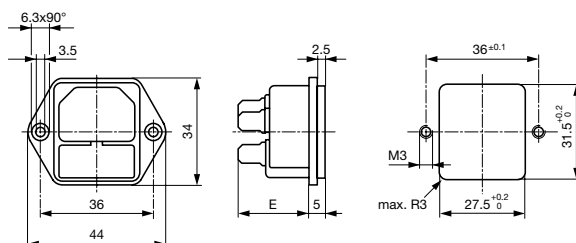
Appliance Inlet	C14 acc. to IEC/EN 60320-1, UL 498, CSA C22.2 no. 42 (for cold conditions) pin-temperature 70 °C, 10A, Protection Class 1
Fuseholder	1-pole, Shocksafe category PC2 acc. to IEC 60127-6, for fuse-links 5 x 20 mm
Rated Power Acceptance @ Ta 23 °C	5 x 20: 2W (1 pole)
Power Acceptance @ Ta > 23°C	Admissible power acceptance at higher ambient temperature see derating curves

**Dimensions**

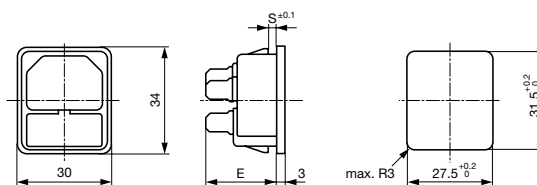
Screw-on mounting types 6200/05

44 mm

Snap-in mounting types 6200/05



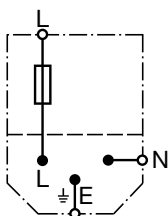
E: Solder terminals 20.5 mm  
E: Quick connect terminals 23.5 mm



E: solder terminals 22.5 mm  
E: quick-connect terminals 25.5 mm  
S: 1.0/1.5/2.0/2.5/3.0 mm

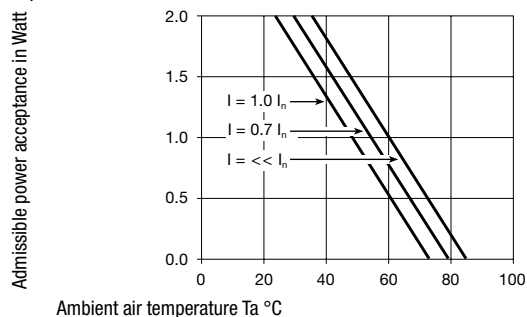
## Diagrams

6200/05

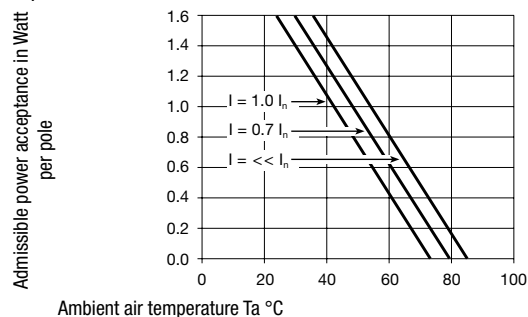


## Derating Curves

1-pole



2-pole



## Variants

Socket and fuse-carrier included

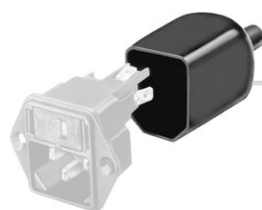
Protection Class	Panel mounting	Panel Thickness s [mm]	Fuseholder	Terminal	Internally wired	Order Number
1	Screw	-	1-pole	Quick connect terminals 4.8 x 0.8 mm	●	6200.2200
1	Screw	-	1-pole	Quick connect terminals 6.3 x 0.8 mm	●	6200.2300
1	Screw	-	1-pole	Solder terminals 3.8 x 0.8 mm	●	6200.2100
1	Snap-in	1	1-pole	Quick connect terminals 4.8 x 0.8 mm	●	6200.4210
1	Snap-in	1.5	1-pole	Quick connect terminals 4.8 x 0.8 mm	●	6200.4215
1	Snap-in	2	1-pole	Quick connect terminals 4.8 x 0.8 mm	●	6200.4220
1	Snap-in	2.5	1-pole	Quick connect terminals 4.8 x 0.8 mm	●	6200.4225
1	Snap-in	3	1-pole	Quick connect terminals 4.8 x 0.8 mm	●	6200.4230
1	Snap-in	1	1-pole	Quick connect terminals 6.3 x 0.8 mm	●	6200.4310
1	Snap-in	1.5	1-pole	Quick connect terminals 6.3 x 0.8 mm	●	6200.4315
1	Snap-in	2	1-pole	Quick connect terminals 6.3 x 0.8 mm	●	6200.4320
1	Snap-in	2.5	1-pole	Quick connect terminals 6.3 x 0.8 mm	●	6200.4325
1	Snap-in	3	1-pole	Quick connect terminals 6.3 x 0.8 mm	●	6200.4330
1	Snap-in	1	1-pole	Solder terminals 3.8 x 0.8 mm	●	6200.4110
1	Snap-in	1.5	1-pole	Solder terminals 3.8 x 0.8 mm	●	6200.4115
1	Snap-in	2	1-pole	Solder terminals 3.8 x 0.8 mm	●	6200.4120
1	Snap-in	2.5	1-pole	Solder terminals 3.8 x 0.8 mm	●	6200.4125
1	Snap-in	3	1-pole	Solder terminals 3.8 x 0.8 mm	●	6200.4130

## Packaging unit

50 Pcs

## Accessories

## Description



Assorted Covers  
Rear Cover

0859.0047

4311.9403



Cord retaining kits  
Cord retaining strain relief

Flat head, A

4700.0001

Countersunk, B

4700.0002

## Mating Outlets/Connectors

## Category / Description



## Appliance OutletOverview complete

IEC Appliance Outlet F, Screw-on Mounting, Front Side, Solder Terminal

4787

IEC Appliance Outlet F, Snap-in Mounting, Front Side, Solder or Quick-connect Terminal

4788

IEC Appliance Outlet F or H, Screw-on Mounting, Front Side, Solder, PCB or Quick-connect Terminal

5091

IEC Appliance Outlet F or H, Screw-on Mounting, Front Side, Solder or Quick-connect Terminal

5092

Appliance Outletfurther types to6200



## ConnectorOverview complete

IEC Connector C15, Rewireable, Straight

0101

IEC Connector C15A, Rewireable, Straight

0102

IEC Connector C15A, Rewireable, Straight

0102-G

IEC Connector C15A, Rewireable, Angled

0112

IEC Connector C13, Rewireable, Angled

4012

Connectorfurther types to6200

...



## Power CordOverview complete

Power Cord with IEC Connector C13, Angled

0311

Power Cord with IEC Connector C13, Angled

3011

Power Cord with IEC Connector C13, Angled

3012

Power Cord with IEC Connector C13, Angled

3013

Power Cord with IEC Connector C13

3020

Power Cordfurther types to6200

...