

4

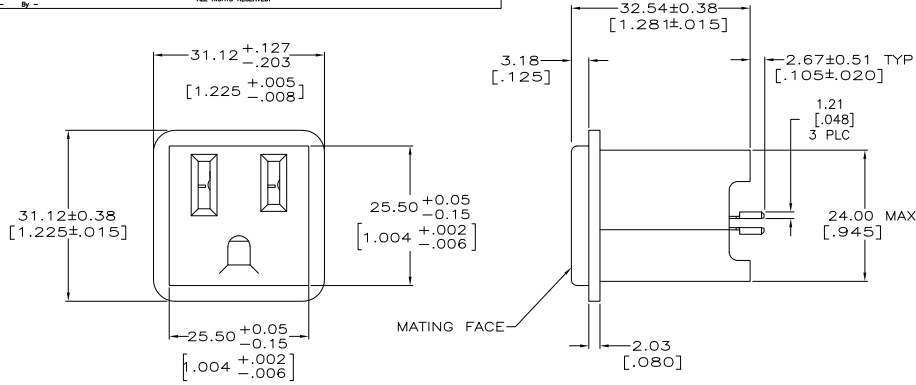
3

2

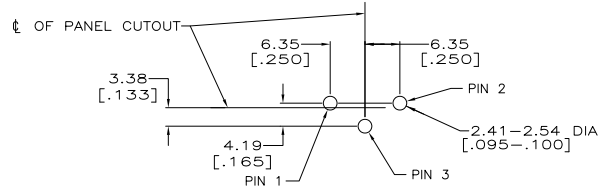
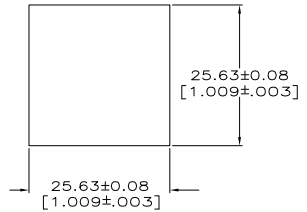
1

THIS DRAWING IS UNPUBLISHED. RELEASED FOR PUBLICATION. ALL RIGHTS RESERVED.

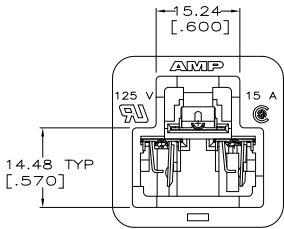
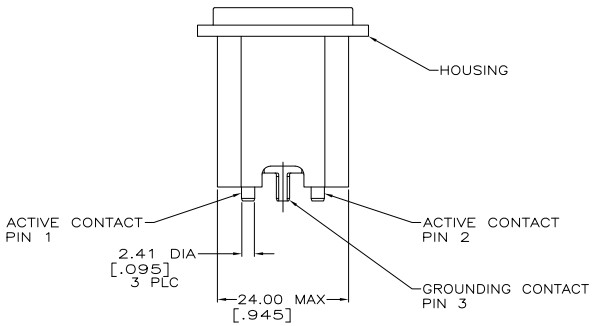
LOC	DIST	REVISIONS		
FT	0	REV	DATE	APP'D
		M1	REVISED PER ECO-11-004820	11MAR11 RJK HMR



RECOMMENDED PANEL CUTOUT



RECOMMENDED HOLE PATTERN
1.57[.062] THICK PC BOARD
COMPONENT SIDE



- ⚠ 2.54µm[.000100] MIN TIN-LEAD FOR A MIN LENGTH OF .195 ON END OPPOSITE MATING FACE, OVER 1.27µm[.000050] MIN NICKEL ON ENTIRE CONTACT.
- ⚠ 2.54µm[.000100] MIN TIN FOR A MIN LENGTH OF .195 ON END OPPOSITE MATING FACE, OVER 1.27 MIN NICKEL ON ENTIRE CONTACT.
- ⚠ HOUSING: NYLON, COLOR: SEE TABLE.
CONTACTS: BRASS

WHITE	3-213598-4
BLACK	3-213598-2
GRAY	3-213598-1
WHITE	213598-4
BLACK	213598-2
GRAY	213598-1
COLOR	PART NO

DIMENSIONS		TOLERANCES UNLESS OTHERWISE SPECIFIED		MATERIAL		FINISH		CONTACTS	
mm	[INCHES]	0 PLC	± .05	1 PLC	± .05	2 PLC	± .05	3 PLC	± .05
		4 PLC	± .05	ANGLES	± .05				

REV	DATE	BY	CHK	APP'D	NAME
0	23JUN2005	K. WHITAKER		D. BOSSI	
1	23JUN2005				

DESCRIPTION	DATE	DATE	DATE
RECEPTACLE ASSEMBLY, CONVENIENCE OUTLET	23JUN2005	23JUN2005	23JUN2005

SIZE	CAGE CODE	DRAWING NO	RESTRICTED TO
A2	00779	C=213598	

CUSTOMER DRAWING SCALE: 2:1 SHEET: 1 of 1 REV: M1