

4

3

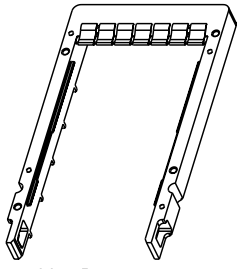
2

1

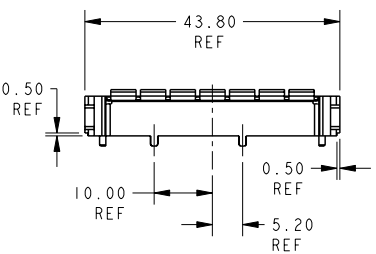
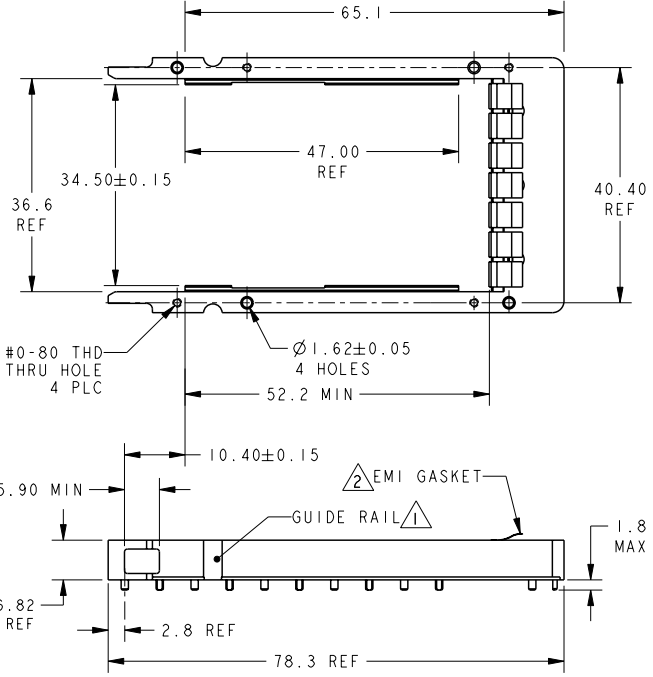
THIS DRAWING IS UNPUBLISHED. RELEASED FOR PUBLICATION 20
 COPYRIGHT 20 BY TYCO ELECTRONICS CORPORATION. ALL RIGHTS RESERVED.

LOC	DIST	REVISIONS				
P	LTR	DESCRIPTION	DATE	DWN	APVD	
A		RELEASED PER ECO-07-007698	11APR07	BM	MS	
AI		ECR-08-019072	31JUL08	AZ	SY	

- 1 GUIDE RAIL MATERIAL: ZINC
GUIDE RAIL PLATING: 1.27 μM MIN THICK NICKEL,
OVER 5.0 μM MIN THK COPPER
- 2 EMI GASKET MATERIAL: COPPER ALLOY
EMI GASKET PLATING: MATTE TIN, 2.0 μM MIN THK
- 3 DATUMS X AND Y TO BE
ESTABLISHED BY CUSTOMER
- 4. DESIGN ACCEPTS MODULES THAT ARE COMPLIANT
WITH X2 SPECIFICATION REV 2.0b
- 5 SEE CUSTOMER DRAWING 1367337-1 FOR
CONNECTOR PAD DIMENSIONS
- 6 RECOMMENDATION FOR PCB HOLES:
A. HOLE DIA. AFTER DRILLING: 1.55 +0.02
B. HOLE DIA. AFTER TIN-LEAD PLAT: 1.45+.05
C. 25-50 MICROMETERS COPPER UNDERPLATE
D. MAXIMUM 35 MICROMETERS TIN-LEAD PLATING
- 7. 3.0 MINIMUM PCB THICKNESS
FOR BELLY TO BELLY APPLICATION
- 8. BEZEL REQUIREMENTS PER X2 MSA SPECIFICATION REV 2.0b
- 9 #0-80 SOCKET HEAD CAP SCREW SUPPLIED BY
CUSTOMER. 4 PLACES.
- 10 OPTIONAL HOLES FOR M3 SCREW / STANDOFFS
- 11 CROSS HATCH AREA DENOTES RAISED
SURFACE, 0.5mm OFF HOST BOARD
- 12 SURFACE OF RAIL IN CONTACT
WITH HOST BOARD
- 13. REFERENCE INSTRUCTION SHEET 408-10102
FOR ADDITIONAL INFORMATION.



SCALE 1:1



PART NUMBER 1367710-1

<small>THIS DRAWING IS A CONTROLLED DOCUMENT FOR TYCO ELECTRONICS CORPORATION IT IS SUBJECT TO CHANGE AND THE CONTROLLING ENGINEERING ORGANIZATION SHOULD BE CONTACTED FOR THE LATEST REVISION.</small>		DWN 16JUN2005	tyco Electronics Tyco Electronics Harrisburg, PA 17105-3608	X2 CAST METAL GUIDE FRAME, TYPE 2	RESTRICTED TO
DIMENSIONS:		CHK E. BRIGHT 16JUN2005			
mm		APVD F. BRIGHT 16JUN2005			
TOLERANCES UNLESS OTHERWISE SPECIFIED: 0 PLC ±.5 1 PLC ±.2 2 PLC ±.1 3 PLC ±.05 4 PLC ±. ANGLES ±.1		NAME	SIZE	CAGE CODE	DRAWING NO
MATERIAL		APPLICATION SPEC	A3	00779	1367710
FINISH		WEIGHT	SCALE 3:2		SHEET 1 OF 4
		CUSTOMER DRAWING			REV AI

4

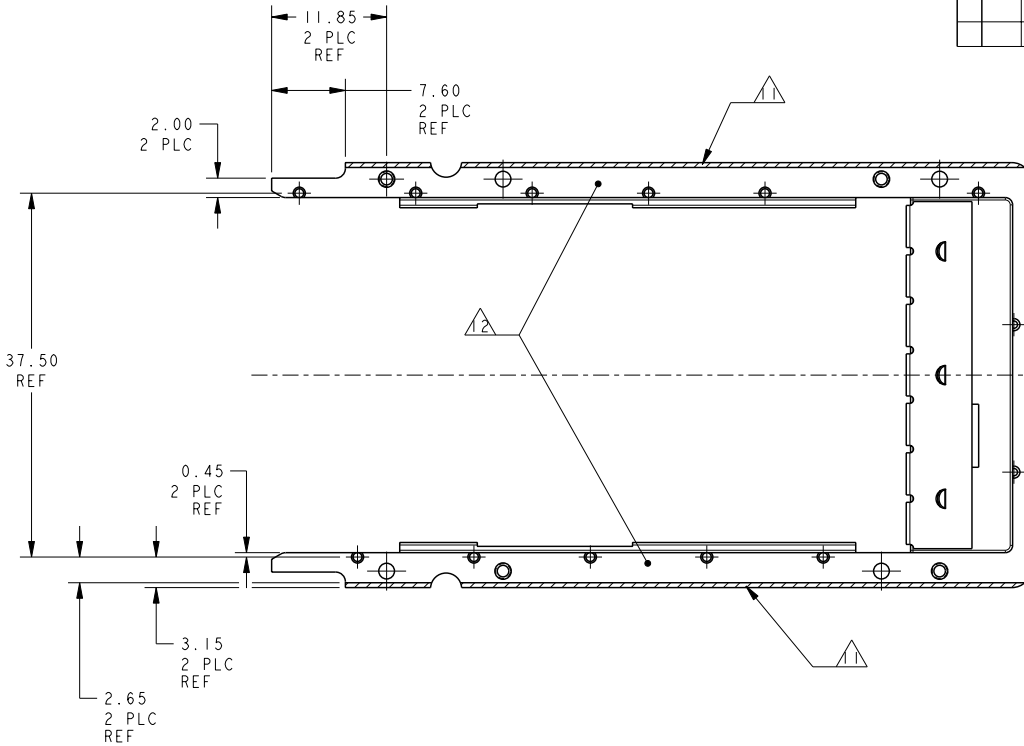
3

2

1

THIS DRAWING IS UNPUBLISHED. RELEASED FOR PUBLICATION 20
 COPYRIGHT 20 BY TYCO ELECTRONICS CORPORATION. ALL RIGHTS RESERVED.

LOC	DIST	REVISIONS				
P	LTR	DESCRIPTION	DATE	DWN	APVD	
-	-	SEE SHEET 1	-	-	-	



<small>THIS DRAWING IS A CONTROLLED DOCUMENT FOR TYCO ELECTRONICS CORPORATION IT IS SUBJECT TO CHANGE AND THE CONTROLLING ENGINEERING ORGANIZATION SHOULD BE CONTACTED FOR THE LATEST REVISION.</small>		DWN 16 JUN 2005 D. E. STAHL CHK 16 JUN 2005 E. BRIGHT APVD 16 JUN 2005 F. BRIGHT	tyco Electronics Tyco Electronics Harrisburg, PA 17105-3608
DIMENSIONS: mm 	TOLERANCES UNLESS OTHERWISE SPECIFIED: 0 PLC ±.5 1 PLC ±.2 2 PLC ±.1 3 PLC ±.05 4 PLC ±. ANGLES ±.1	NAME X2 CAST METAL GUIDE FRAME, TYPE 2	SIZE CAGE CODE DRAWING NO RESTRICTED TO A3 00779 C-1367710 -
MATERIAL -	FINISH -	APPLICATION SPEC - WEIGHT -	CUSTOMER DRAWING SCALE 3:2 SHEET 2 OF 4 REV A

AMP 1470-19 REV 31MAR2000

4

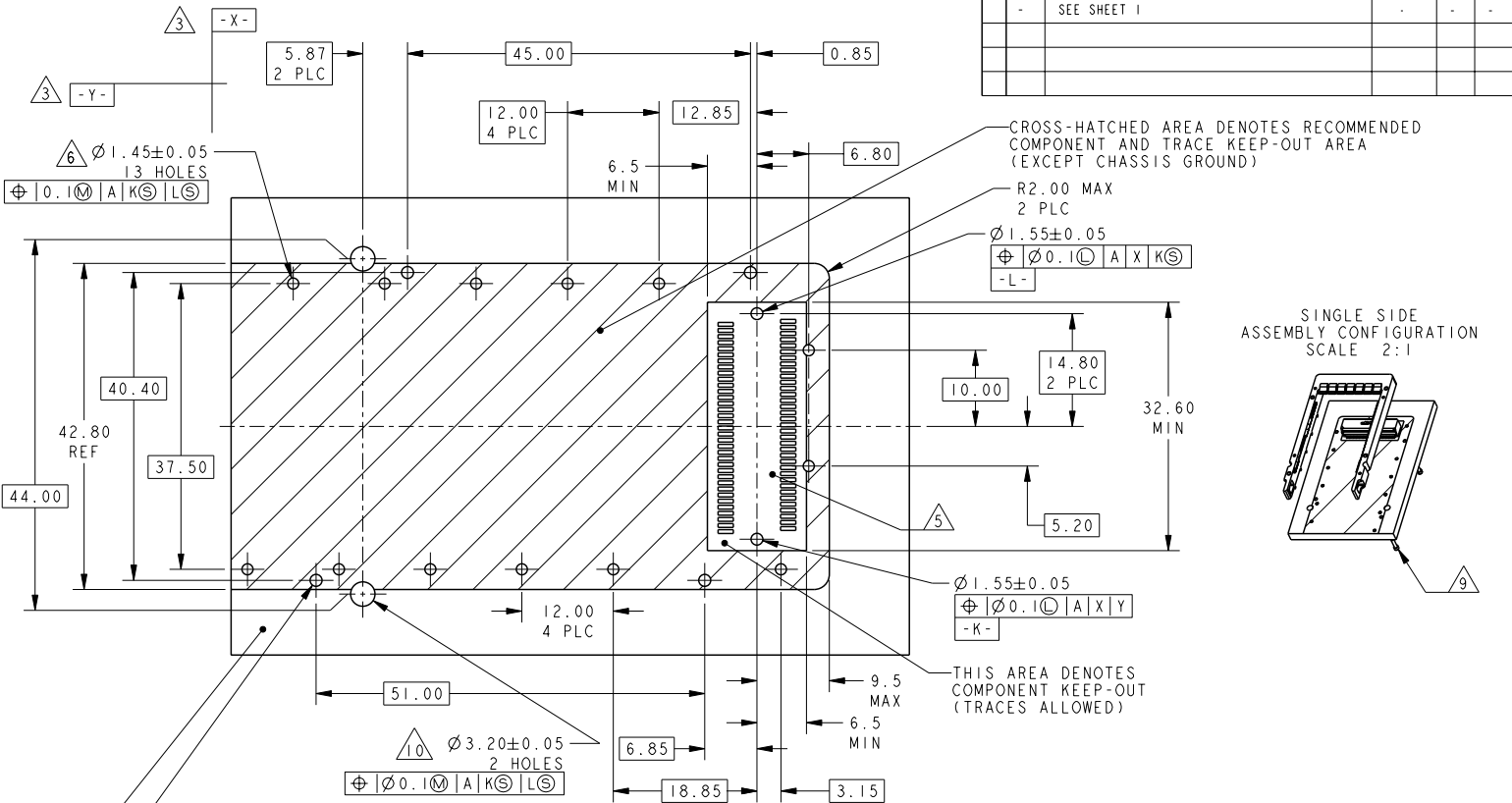
3

2

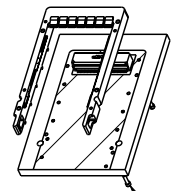
1

THIS DRAWING IS UNPUBLISHED. RELEASED FOR PUBLICATION 20
COPYRIGHT 20 BY TYCO ELECTRONICS CORPORATION. ALL RIGHTS RESERVED.

LOC	DIST	REVISIONS				
P	LTR	DESCRIPTION	DATE	DWN	APVD	
-	-	SEE SHEET 1	-	-	-	



SINGLE SIDE ASSEMBLY CONFIGURATION SCALE 2:1



<small>THIS DRAWING IS A CONTROLLED DOCUMENT FOR TYCO ELECTRONICS CORPORATION AND IS SUBJECT TO CHANGE. THE CONTROLLING ENGINEERING ORGANIZATION SHOULD BE CONTACTED FOR THE LATEST REVISION.</small>		DWN 16 JUN 2005 D. E. STAHL CHK 16 JUN 2005 E. BRIGHT APVD 16 JUN 2005 F. BRIGHT	tyco Electronics Tyco Electronics Harrisburg, PA 17105-3608
DIMENSIONS: mm 		TOLERANCES UNLESS OTHERWISE SPECIFIED: 0 PLC ±.5 1 PLC ±.2 2 PLC ±.1 3 PLC ±.05 4 PLC ±. ANGLES ±.1	NAME X2 CAST METAL GUIDE FRAME, TYPE 2 PRODUCT SPEC - APPLICATION SPEC - WEIGHT - CUSTOMER DRAWING
MATERIAL - FINISH -		SIZE A3 CAGE CODE 00779 DRAWING NO C-1367710	RESTRICTED TO - SCALE 3:2 SHEET 3 OF 4 REV A

AMP 1470-19 REV 31MAR2000

4

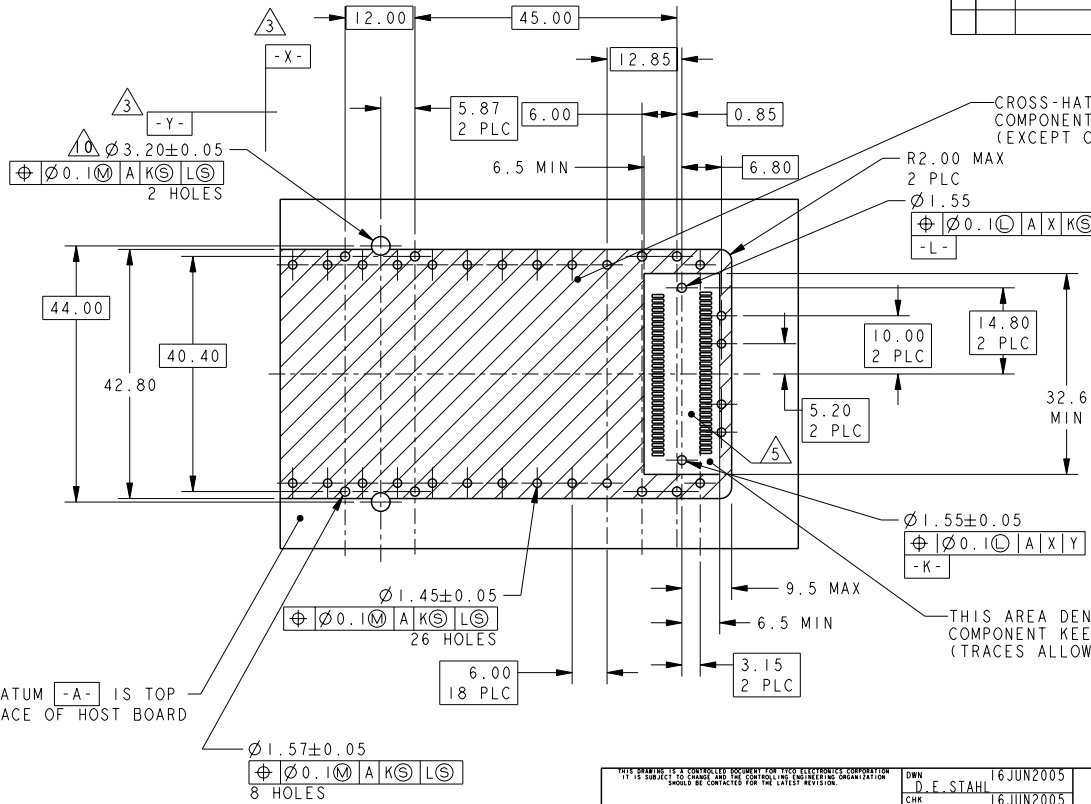
3

2

1

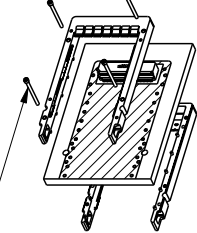
THIS DRAWING IS UNPUBLISHED. RELEASED FOR PUBLICATION 20
 COPYRIGHT 20 BY TYCO ELECTRONICS CORPORATION. ALL RIGHTS RESERVED.

LOC	DIST	REVISIONS			
P	LTR	DESCRIPTION	DATE	DWN	APVD
-	-	SEE SHEET 1	-	-	-



CROSS-HATCHED AREA DENOTES RECOMMENDED COMPONENT AND TRACE KEEP-OUT AREA (EXCEPT CHASSIS GROUND)

X2 RECOMMENDED PCB LAYOUT FOR BELLY TO BELLY CONFIGURATION SCALE 2:1



THIS AREA DENOTES COMPONENT KEEP-OUT AREA (TRACES ALLOWED)

DATUM -A- IS TOP SURFACE OF HOST BOARD

<small>THIS DRAWING IS A CONTROLLED DOCUMENT FOR TYCO ELECTRONICS CORPORATION IT IS SUBJECT TO CHANGE AND THE CONTROLLING ENGINEERING ORGANIZATION SHOULD BE CONTACTED FOR THE LATEST REVISION.</small>		DWN 16 JUN 2005 D. E. STAHL CHK 16 JUN 2005 E. BRIGHT APVD 16 JUN 2005 F. BRIGHT	tyco Electronics Tyco Electronics Harrisburg, PA 17105-3608
DIMENSIONS: mm 	TOLERANCES UNLESS OTHERWISE SPECIFIED: 0 PLC ±.5 1 PLC ±.2 2 PLC ±.1 3 PLC ±.05 4 PLC ±. ANGLES ±.1	NAME X2 CAST METAL GUIDE FRAME, TYPE 2	SIZE CAGE CODE DRAWING NO RESTRICTED TO A3 00779 C-1367710 -
MATERIAL -	FINISH -	WEIGHT -	CUSTOMER DRAWING
		SCALE 3:2	SHEET 4 OF 4 REV A