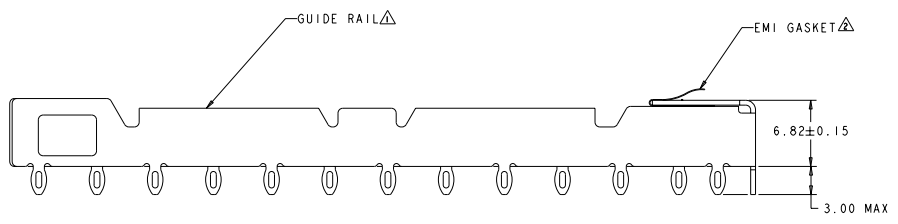
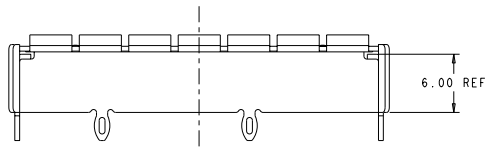
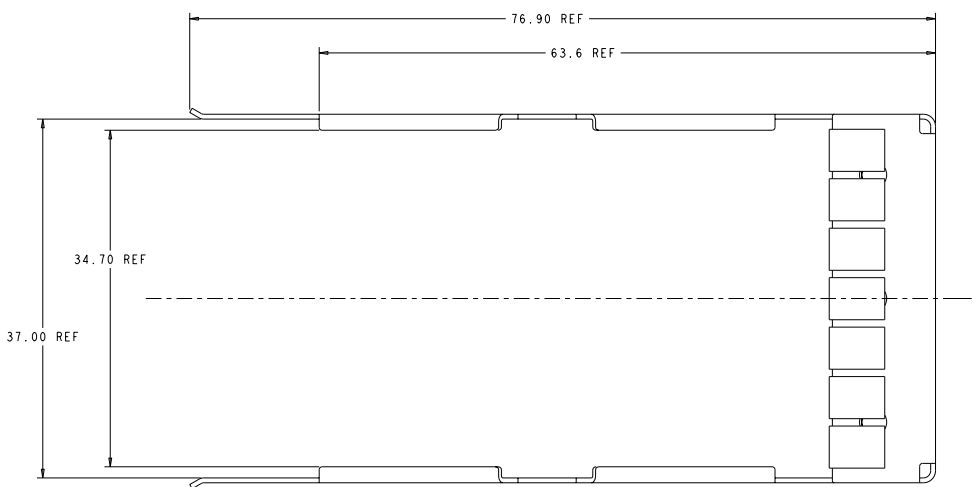


REV	DATE	DESCRIPTION	BY	CHK	APP
5	01.25.00.02	WAS 01.45.00.02			
A		RELEASED PER ECO-07-001690			

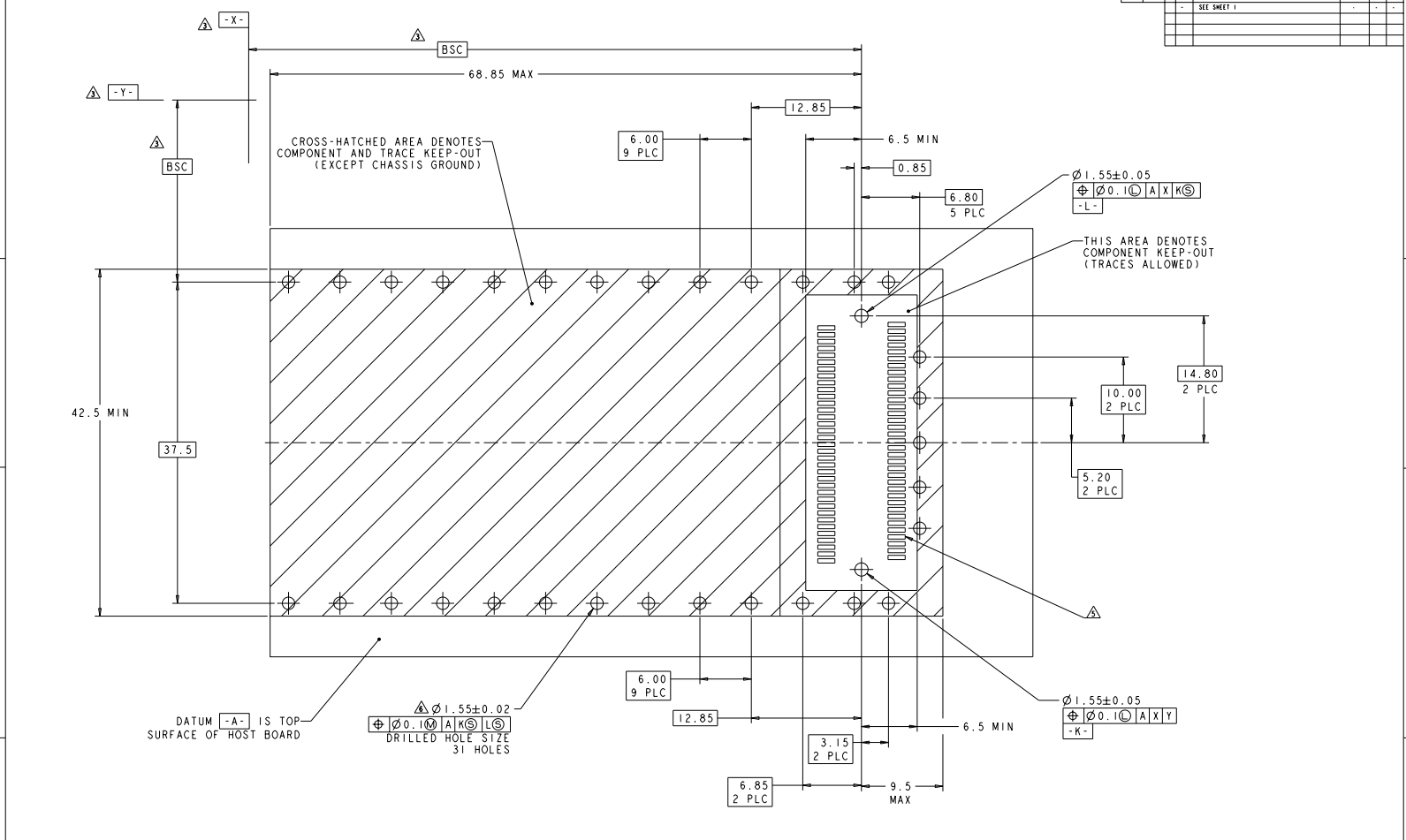
- △ GUIDE RAIL MATERIAL: COPPER ALLOY  
GUIDE RAIL FINISH: 0.4 MICROMETERS MIN THK TIN COATING
- △ EMI GASKET MATERIAL: COPPER ALLOY  
EMI GASKET PLATING: 2 MICROMETERS MIN THK TIN PLATE
- △ DATUMS X AND Y AND BSC DIMENSIONS TO BE ESTABLISHED BY CUSTOMER
- 4. DESIGN ACCEPTS MODULES THAT ARE COMPLIANT WITH X2 SPECIFICATION REV 2.0b
- △ SEE CUSTOMER DRAWING 1367337-1 FOR CONNECTOR PAD DIMENSIONS
- △ RECOMMENDATION FOR P.C. BOARD HOLES:  
COPPER UNDERPLATE, 25-50 MICROMETERS THICK, FOLLOWED BY ANY OF THESE SURFACE FINISHES:
  - A. HASL SnPb: 35 MICROMETERS MAX THK
  - B. GALVANIC Au: 4-5 MICROMETERS Ni + 0.1-0.5 MICROMETERS Au
  - C. OSP: 0.2-0.5 MICROMETERS THK
  - D. IMMERSION Sn: 0.5 MICROMETERS MIN THK
  - E. IMMERSION Au: 4-5 MICROMETERS Ni + 0.1-0.5 MICROMETERS Au
  - F. IMMERSION Ag: 0.1-0.3 MICROMETERS
- 7. BARE EDGES PERMITTED
- 8. 3.0 MIN PRINTED CIRCUIT BOARD THICKNESS FOR BELLY TO BELLY APPLICATION
- 9. BEZEL REQUIREMENTS PER X2 MSA
- 10. REFERENCE INSTRUCTION SHEET 408-8997 FOR ADDITIONAL INSTRUCTIONS.



1367608-1  
PART NUMBER

DATE: 01.25.00.02 BY: [Signature] CHECKED: [Signature]		PROJECT: RAIL ASSY, GUIDE, 1/2 BELLY TO BELLY STATE: PA COUNTY: YORK CITY: HARRISBURG	
PART NUMBER: 1367608-1 REV: A		DRAWING NO: 1367608-1 SCALE: 5:1 SHEET: 1 OF 3	

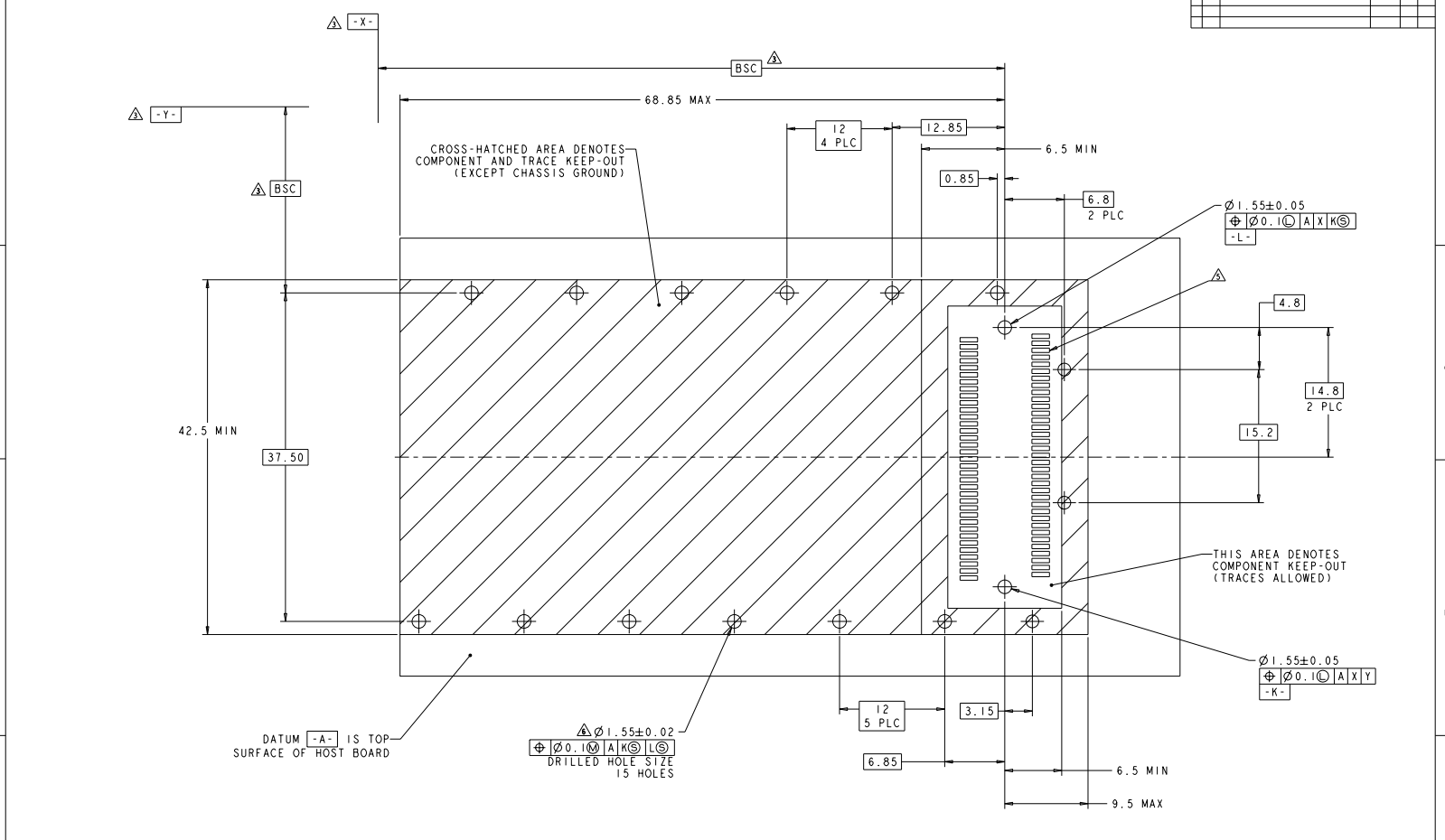
REVISOR		REVISIONS	
NO.	DATE	DESCRIPTION	BY
AG	00	SEE SHEET 1	



**RECOMMENDED P.C. BOARD LAYOUT FOR BELLY TO BELLY X2**

DATE: 01/11/2004	BY: AEL/IN	DATE: 01/11/2004	BY: AEL/IN
REVISED: 01/11/2004	BY: BEL/ET	DATE: 01/11/2004	BY: BEL/ET
PROJECT: RAIL ASSY. GUIDE #2 BELLY TO BELLY		STATE: PA 17185-3400	
CUSTOMER: 00778		CUSTOMER: 1367608	
SHEET: 5		TOTAL SHEETS: 5	

REV	DATE	DESCRIPTION	BY	CHK	APP
00		SEE SHEET 1			



**RECOMMENDED P.C. BOARD LAYOUT  
FOR SINGLE SIDE MOUNTED X2**

TITLE: RAIL ASSY. GUIDE, X2 BELLY TO BELLY PROJECT: RAIL ASSY. GUIDE, X2 BELLY TO BELLY DATE: 00779 ©-1367608 CUSTOMER: CUSTOMER DRAWING		PART: 20032004 REV: 00 DATE: 08/24/2010 BY: TYPH ELECTRONICS CORPORATION CHECKED: [Signature] APPROVED: [Signature]		TYPH ELECTRONICS CORPORATION Harrisburg, PA 17105-3600 PHONE: 717-530-1000 FAX: 717-530-1001 WWW: www.typhelec.com	
---	--	--	--	--	--