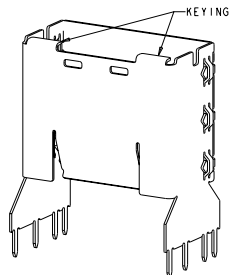
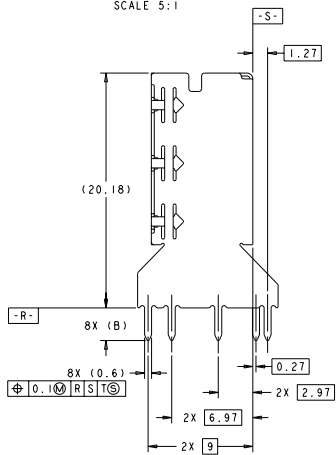
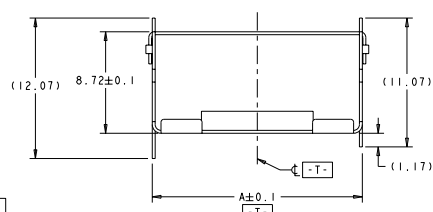


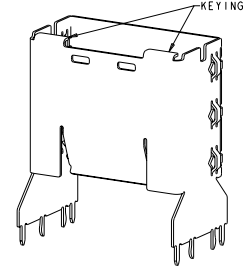
REVISED		REVISIONS			
REV	DATE	DESCRIPTION	BY	CHK	APP
A		RELEASED PER ECO-08-011133			



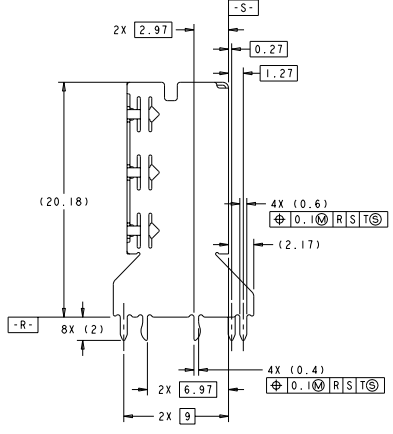
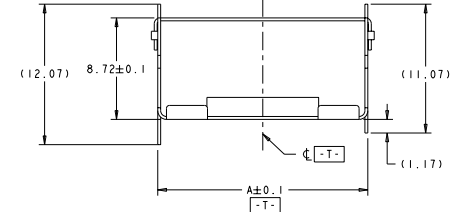
1888413-6  
SCALE 5:1



1888413-6 AND 1888416-8  
AS SHOWN



1888413-4  
SCALE 5:1



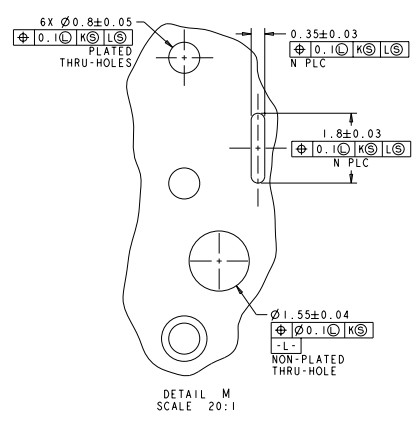
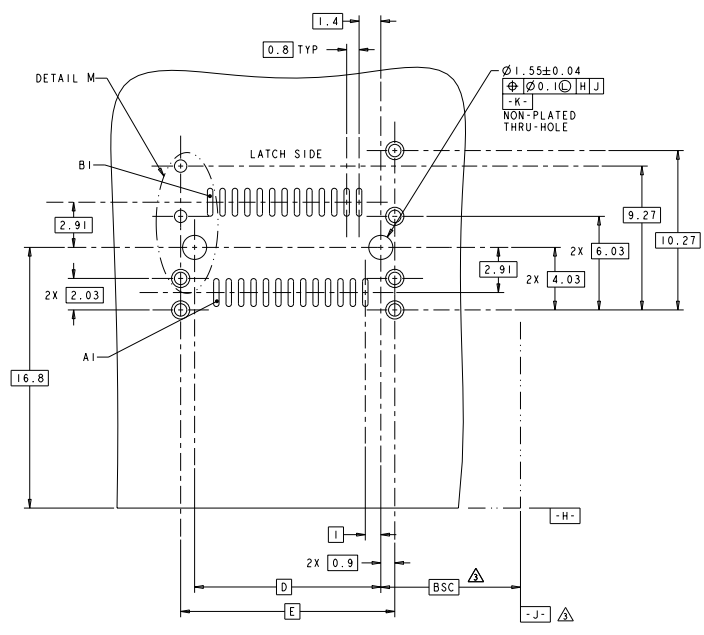
1888413-4  
AS SHOWN

- △ MATERIAL: NICKEL-SILVER PER ASTM B 122.
- 2. SHIELD ASSY TO BE USED WITH THE SURFACE MOUNT RECEPTACLE CONNECTOR PART NUMBER REFERENCED IN TABLE.
- △ DATUM AND BASIC DIMENSION ESTABLISHED BY CUSTOMER.

1888020-2	36	-	17.8	16	3.5	18.05	36	1888413-8
1888020-2	36	-	17.8	16	2.8	18.05	36	1888413-6
1888020-2	36	-	17.8	16	-	18.05	36	1888413-4
CONNECTOR PART NUMBER	N	F	E	D	B	A	POSN	PART NUMBER

DATE: 08/22/28 BY: TECH ELECTRONICS CORPORATION TITLE: CUSTOMER DRAWING	PART NUMBER: 1888413-4 REV: A SCALE: 5:1	EVERCLEAR MIL-SAS VERTICAL INTERNAL SHELL ASSEMBLY DUAL KEYING STATE: PA CITY: HARRISBURG, PA 17105-3600
---	--	--

REVIS		REVISIONS			
NO	DATE	DESCRIPTION	BY	CHK	APP
00		SEE SHEET 1			



RECOMMENDED PCB LAYOUT  
 FOR 1888413-4 AND 1888413-8  
 SCALE 8:1

EVERCLEAR 188-2234 00779		EVERCLEAR 188-2234 00779		EVERCLEAR Mini-SAS VERTICAL INTERNAL SHELL ASSEMBLY STATE SCALE CODE DRAWING NO A 00779-1888413		EVERCLEAR Harrisburg, PA 17105-3600	
CUSTOMER DRAWING		CUSTOMER DRAWING		CUSTOMER DRAWING		CUSTOMER DRAWING	