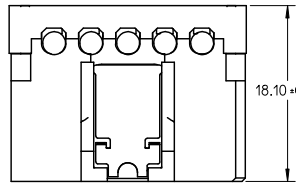
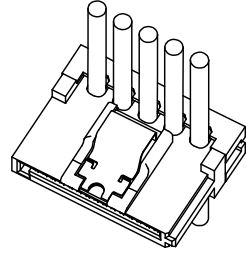
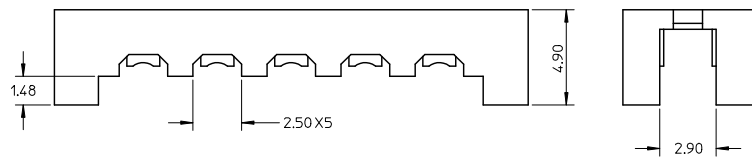
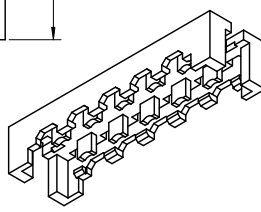
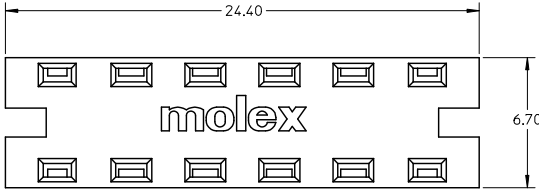
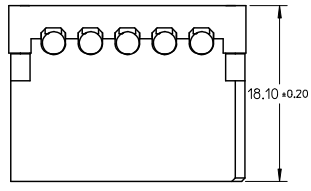
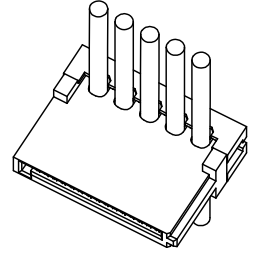


10 9 8 7 6 5 4 3 2 1



APPLICATION FOR WITH LATCH TYPE



APPLICATION FOR WITHOUT LATCH TYPE

NOTE
 1 MATERIAL: THERMAL PLASTIC, COLOR : BLACK UL94V-0.
 2 THIS COVER IS FEED THROUGH TYPE, IT IS AVAILABLE FOR 67926-000*/002*(WITH LATCH), 67926-001*(WITHOUT LATCH).
 3 PACKAGE SPEC:
 3.1 1000 PCS IN ONE BAG.
 3.2 3000 PCS(3 PAGES) IN ONE INNER CARTON.
 3.3 12,000 PCS(4 INNER CARTONS) IN ONE OUTER CARTON.

P/N	REMARK
67926-0041	NON HALOGEN-FREE
67926-0841	HALOGEN-FREE

ADD PART NUMBER EC NO: SH2009-0536 TDRW:J.SONG 2009/05/05 CHKDX:J.SONG 2009/06/19 APPR:HWANG 2009/06/23 REV DESCRIPTION	QUALITY SYMBOLS ▽=0 ▽=0	GENERAL TOLERANCES (UNLESS SPECIFIED) <table border="1"> <thead> <tr> <th></th> <th>mm</th> <th>INCH</th> </tr> </thead> <tbody> <tr> <td>4 PLACES</td> <td>± 0.15</td> <td>± 0.006</td> </tr> <tr> <td>3 PLACES</td> <td>± 0.25</td> <td>± 0.010</td> </tr> <tr> <td>2 PLACES</td> <td>± 0.38</td> <td>± 0.015</td> </tr> <tr> <td>1 PLACE</td> <td>± 0.51</td> <td>± 0.020</td> </tr> </tbody> </table> ANGULAR ± 1 °		mm	INCH	4 PLACES	± 0.15	± 0.006	3 PLACES	± 0.25	± 0.010	2 PLACES	± 0.38	± 0.015	1 PLACE	± 0.51	± 0.020	DIMENSION STYLE MM ONLY DRAWN BY GRATE MA DATE 2004/04/25 CHECKED BY YA JUN DATE 2004/04/25 APPROVED BY SAM DATE 2004/04/25	SCALE 5:1 DESIGN UNITS METRIC THIRD ANGLE PROJECTION	TITLE COVER FOR SATA POWER CONNECTOR IDT TYPE MOLEX INCORPORATED MATERIAL NO. SEE TABLE DOCUMENT NO. SD-67926-004 SHEET NO. 1 OF 1
		mm	INCH																	
	4 PLACES	± 0.15	± 0.006																	
	3 PLACES	± 0.25	± 0.010																	
2 PLACES	± 0.38	± 0.015																		
1 PLACE	± 0.51	± 0.020																		
DRAFT WHERE APPLICABLE MUST REMAIN WITHIN DIMENSIONS		THIS DRAWING CONTAINS INFORMATION THAT IS PROPRIETARY TO MOLEX INCORPORATED AND SHOULD NOT BE USED WITHOUT WRITTEN PERMISSION																		

9 8 7 6 5 4 3 2 1