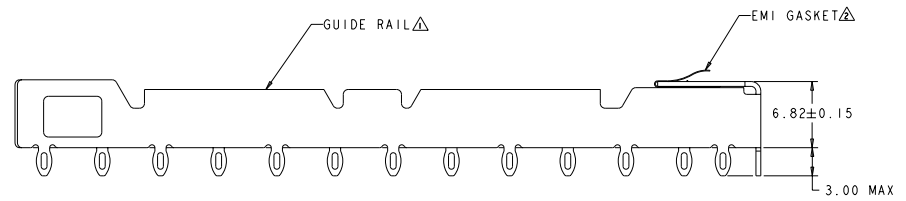
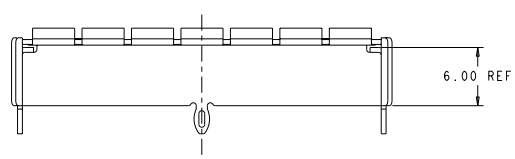
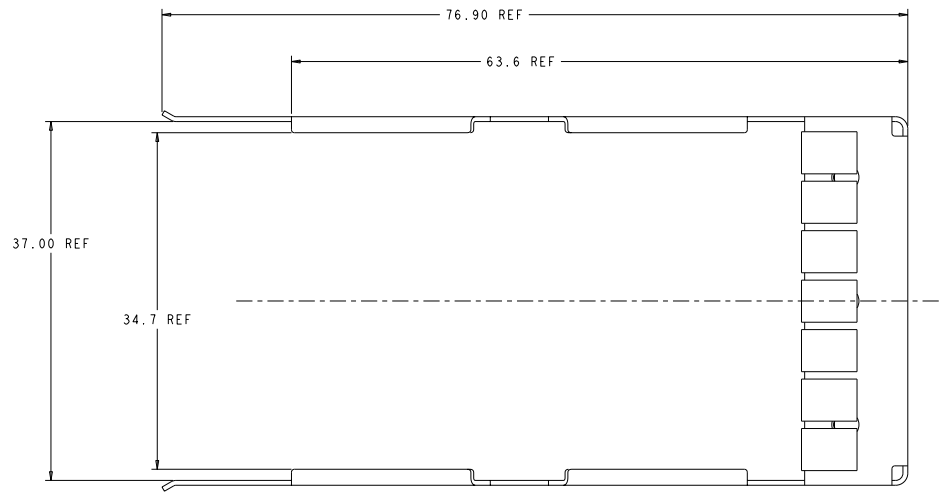


REVISONS		DATE	BY	CHKD
5	Ø1.55 ±0.02 WAS Ø1.45±0.02	11.08.2006	PA	ML/ED
A	RELEASED PER ECO-07-001690		EMMET	DM MS

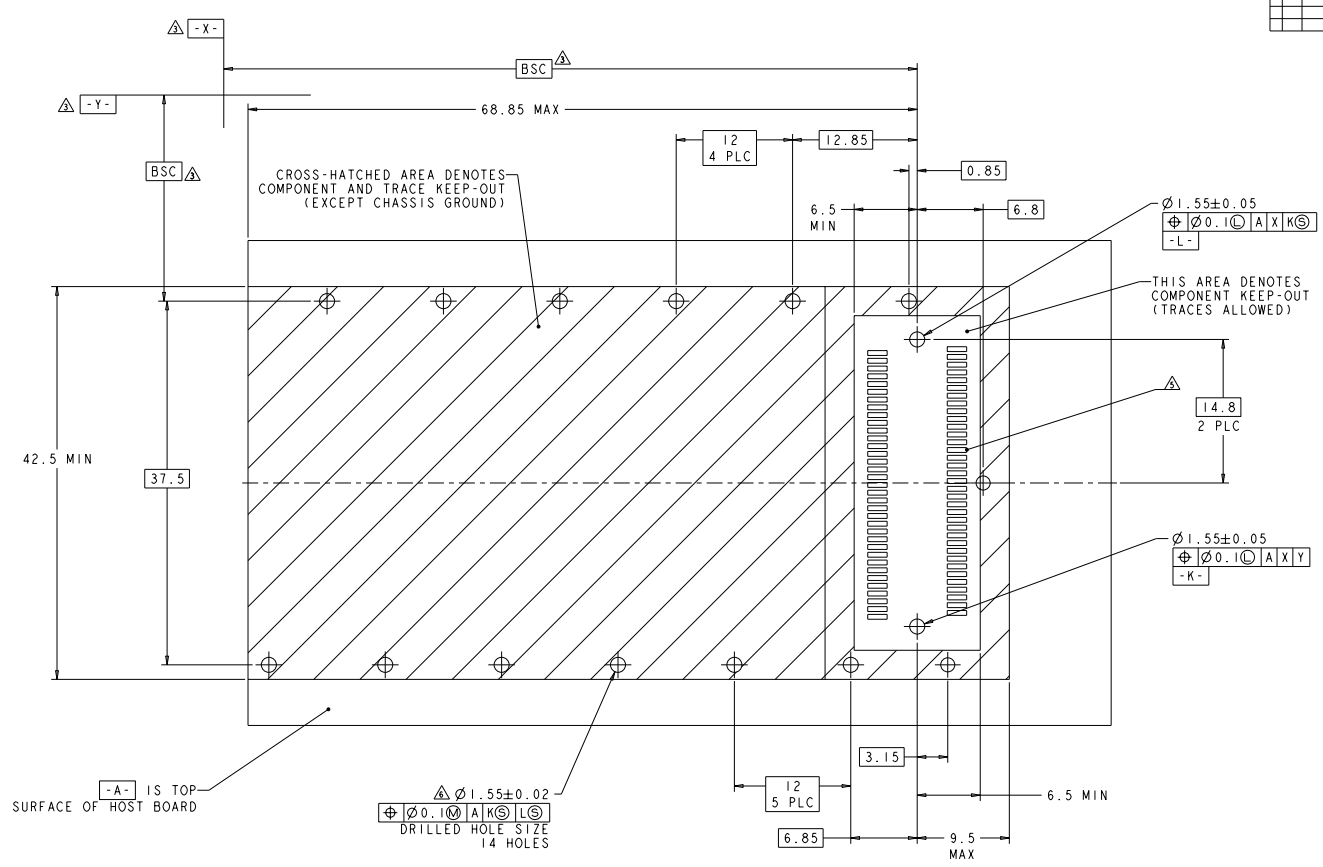
- △ GUIDE RAIL MATERIAL: COPPER ALLOY
GUIDE RAIL FINISH: 0.4 MICROMETERS MIN THK TIN COATING
- △ EMI GASKET MATERIAL: COPPER ALLOY
EMI GASKET PLATING: 2 MICROMETERS MIN THK TIN PLATE
- △ DATUMS X AND Y AND BSC DIMENSIONS TO BE ESTABLISHED BY CUSTOMER
- 4. DESIGN ACCEPTS MODULES THAT ARE COMPLIANT WITH X2 SPECIFICATION REV 2.0b
- △ SEE CUSTOMER DRAWING I367337-1 FOR CONNECTOR PAD DIMENSIONS
- △ RECOMMENDATION FOR P.C. BOARD HOLES:
COPPER UNDERPLATE, 25-50 MICROMETERS THICK, FOLLOWED BY ANY OF THESE SURFACE FINISHES:
 - A. HASL SnPb: 35 MICROMETERS MAX THK
 - B. GALVANIC Au: 4-5 MICROMETERS Ni + 0.1-0.5 MICROMETERS Au
 - C. OSP: 0.2-0.5 MICROMETERS THK
 - D. IMMERSION Sn: 0.5 MICROMETERS MIN THK
 - E. IMMERSION Au: 4-5 MICROMETERS Ni + 0.1-0.5 MICROMETERS Au
 - F. IMMERSION Ag: 0.1-0.3 MICROMETERS
- 7. BARE EDGES PERMITTED
- 8. BEZEL REQUIREMENTS PER X2 MSA
- 9. REFERENCE INSTRUCTION SHEET 408-8997 FOR ADDITIONAL INFORMATION.



1367610-1
PART NUMBER

DATE: 11/08/06 DRAWN BY: [blank] CHECKED BY: [blank] APPROVED BY: [blank]	DATE: 11/08/06 DRAWN BY: [blank] CHECKED BY: [blank] APPROVED BY: [blank]	DATE: 11/08/06 DRAWN BY: [blank] CHECKED BY: [blank] APPROVED BY: [blank]	DATE: 11/08/06 DRAWN BY: [blank] CHECKED BY: [blank] APPROVED BY: [blank]	DATE: 11/08/06 DRAWN BY: [blank] CHECKED BY: [blank] APPROVED BY: [blank]
--	--	--	--	--

REV	DATE	REVISIONS
AG	00	SEE SHEET 1



RECOMMENDED P.C. BOARD LAYOUT

TITLE: RAIL ASSY. GUID. 1/2 REEL MOUNT PART NO: 00778 CUSTOMER DRAWING	DATE: 08/24/2016 DRAWN BY: TERRY ELECTRONICS CORPORATION CHECKED BY: TERRY ELECTRONICS CORPORATION APPROVED BY: TERRY ELECTRONICS CORPORATION	REV: 00 DATE: 08/24/2016 DESCRIPTION: RAIL ASSY. GUID. 1/2 REEL MOUNT QUANTITY: 1367610 SHEET: 2 OF 2	TERRY ELECTRONICS CORPORATION Harrisburg, PA 17105-3600 RAIL ASSY. GUID. 1/2 REEL MOUNT 00778 ©=1367610 SHEET 2 OF 2
--	--	---	--