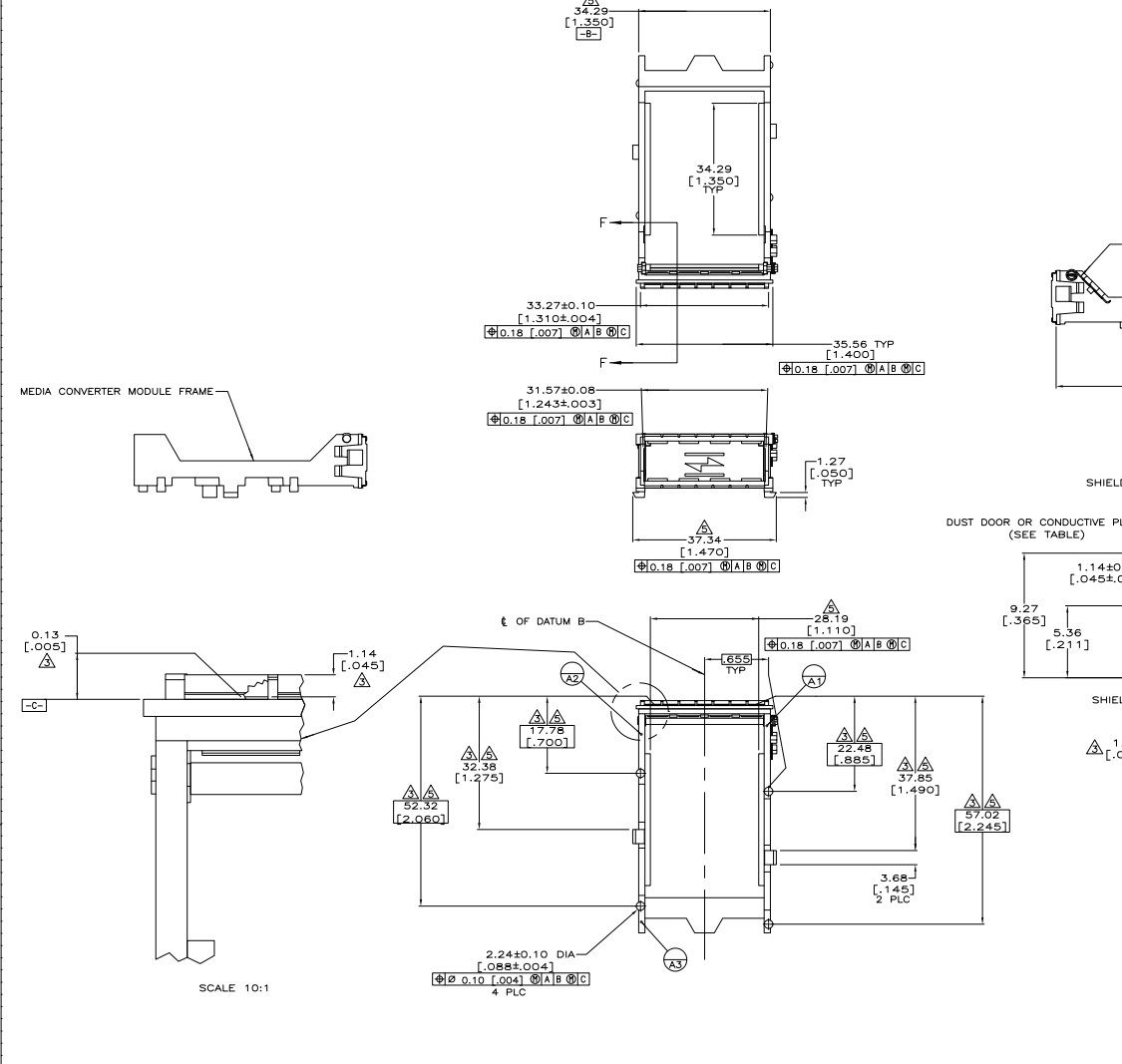
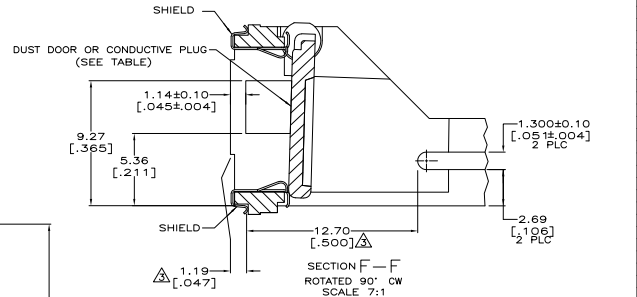
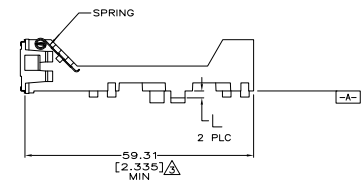


THE DRAWING IS UNCONTROLLED UNLESS INDICATED OTHERWISE
 CONTROLLED BY THE ELECTRONICS CORPORATION ALL RIGHTS RESERVED

REV	DATE	DESCRIPTION	BY	APP
GP 00				
T1		REVISED FOR ESD-05-00047		



- ▲ DUST DOOR: ZINC ALLOY (-3,-4,-5), HTN POLYMER (-6,-7,-8), CONDUCTIVE PLUG: ABS (1-2,1-3,1-4), MEDIA CONVERTER MODULE FRAME: NYLON, BLACK, EMI SHIELD: PHOSPHOR BRONZE, SPRING: STAINLESS STEEL.
- ▲ METAL DUST DOOR: 2.54mm [0.00100] MIN NICKEL OVER 5.09mm [0.00200] MIN COPPER, EMI SHIELD: 1.27µm [0.00050] MIN NICKEL.
- ▲ DIMENSION APPLIES TO FRONT OF SHIELD.
- ▲ LOWER EDGE OF PANEL OPENING IS 0.15 [0.006] BELOW TOP OF PCB FOR HORIZONTAL APPLICATION.
- ▲ DIMENSION APPLIES WHEN ASSEMBLED TO PRINTED CIRCUIT BOARD.



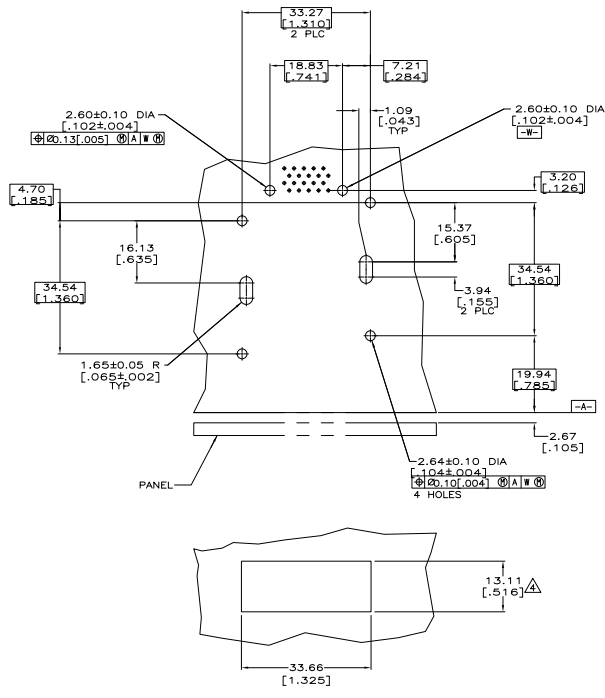
OBSOLETE	CONDUCTIVE PLUG	2.26±0.05 [0.089±.002]	1-787663-4
OBSOLETE	CONDUCTIVE PLUG	2.77±0.05 [0.109±.002]	1-787663-3
OBSOLETE	CONDUCTIVE PLUG	1.80±0.05 [0.071±.002]	1-787663-2
OBSOLETE	NO DOOR OR PLUG	2.26±0.05 [0.089±.002]	1-787663-1
OBSOLETE	NO DOOR OR PLUG	2.77±0.05 [0.109±.002]	1-787663-0
OBSOLETE	NO DOOR OR PLUG	1.80±0.05 [0.071±.002]	787663-9
OBSOLETE	PLASTIC DOOR	2.26±0.05 [0.089±.002]	787663-8
OBSOLETE	PLASTIC DOOR	2.77±0.05 [0.109±.002]	787663-7
OBSOLETE	PLASTIC DOOR	1.80±0.05 [0.071±.002]	787663-6
	METAL DOOR	2.26±0.05 [0.089±.002]	787663-5
	METAL DOOR	2.77±0.05 [0.109±.002]	787663-4
	METAL DOOR	1.80±0.05 [0.071±.002]	787663-3
OBSOLETE	METAL DOOR	2.77±0.05 [0.109±.002]	787663-2
OBSOLETE	METAL DOOR	1.80±0.05 [0.071±.002]	787663-1
	DUST DOOR OR CONDUCTIVE PLUG	L	PART NUMBER

THIS DRAWING IS A CONTROLLED DOCUMENT. DATE: 17 JUN 92
 DESIGNED BY: J. OBENMAN
 DRAWN BY: J. OBENMAN
 CHECKED BY: J. OBENMAN
 APPROVED BY: J. OBENMAN
 TITLE: MEDIA CONVERTER MODULE, CHAMP BLINDMATE
 SCALE: 2:1
 SHEET: 1 OF 2

APP HAS REV 2/19/00

THIS DRAWING IS UNPUBLISHED
 RELEASED FOR FABRICATION
 © COMPANY - BY THIS ELECTRONICS CORPORATION ALL RIGHTS RESERVED

REV	DATE	REVISIONS	BY	CHK	APP
GP 00		ISSUED FOR FABRICATION			
		SEE SHEET 1			



RECOMMENDED HOST CARD FOOTPRINT/PANEL CUTOUT

THIS DRAWING IS A CONTROLLED DOCUMENT		REV	DATE	BY	CHK	APP
DRAWN BY: J. OBERMAN		17	JUN 82	J. OBERMAN		
CHECKED BY: J. OBERMAN		17	JUN 82	J. OBERMAN		
PROJECT NO: 00779		TITLE: GUIDE ASSEMBLY, MEDIA CONVERTER MODULE, CHAMP BLINDMATE				
DRAWING NO: 787663		SCALE: 2:1				
SHEET: 2		TOTAL SHEETS: 2				