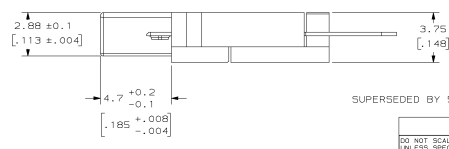
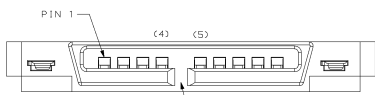
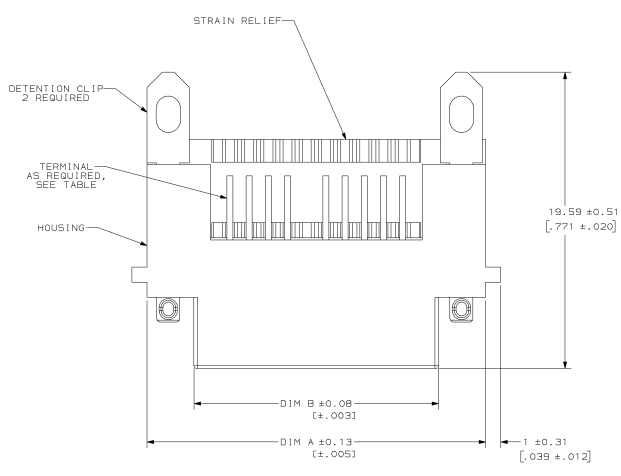
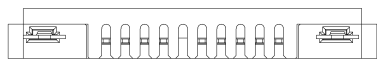


THIS DRAWING IS UNPUBLISHED.
 RELEASED FOR PUBLICATION
 BY AMP INCORPORATED. ALL INTERNATIONAL RIGHTS RESERVED.

REVOLUTIONS		DATE	APP
AA	23	1-24-95	PS
E	REV, EC0210-0787-94		



- △ MATERIAL: HOUSING- LCP POLYESTER MOLDING COMPOUND, BLACK.
 STRAIN RELIEF - NYLON, FLAME RETARDED MOLDING COMPOUND, BLACK.
 TERMINALS- 0.254 (.010) THICK PHOSPHOR BRONZE PLATED WITH 1.27 μm (.000050) MINIMUM THICK GOLD IN CONTACT AREA AND 3.8 μm (.000150) MINIMUM THICK TIN-LEAD ON SOLDER TINES OVER 2.54 μm (.000100) MINIMUM THICK NICKEL UNDERPLATE.
 DETENTION CLIPS- TIN-LEAD OVER NICKEL PLATED BRASS.
- △ DIMENSIONS ARE MAXIMUM UNLESS OTHERWISE SPECIFIED.
- 3. DESIGNATIONS IN PARENTHESES () ARE FOR REFERENCE ONLY.

SUPERSEDED BY 558314-1

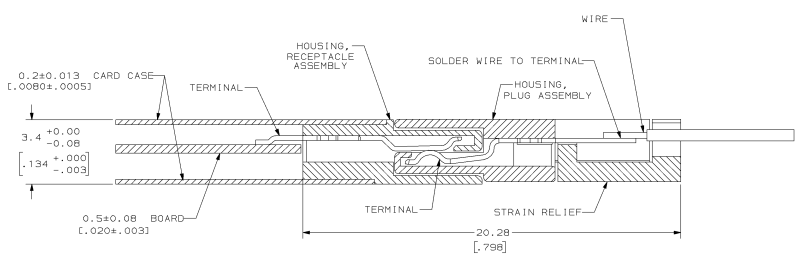
16.26 [1.640]	22.4 [1.882]	9 KEYED	557715-3
23.8 [1.937]	30.02 [1.182]	15 KEYED	557715-2
DIM B	DIM A	POSITIONS	PART NO

DO NOT SCALE PRINT. UNLESS SPECIFIED DIMENSIONS IN mm (INCHES) TOLERANCES ON + 2 PLG DEC + 3 PLG DEC + 4 INCHES	DR 6-30-92 RW BARKER	AMP Incorporated Harrisburg, PA 17105-3608
	CHK 11-5-92 D. HUSSEY	
MATERIAL	APPR 11-6-92 E. HANSH	PLUG ASSEMBLY, MEMORY CARD
FINISH	APPR 11-6-92 E. HANSH	
	APPLICATION SPEC	SIZE CAGE CODE DRAWING NO
		D 00779 G-557715
WEIGHT		SCALE B:1 SHEET 1 OF 2

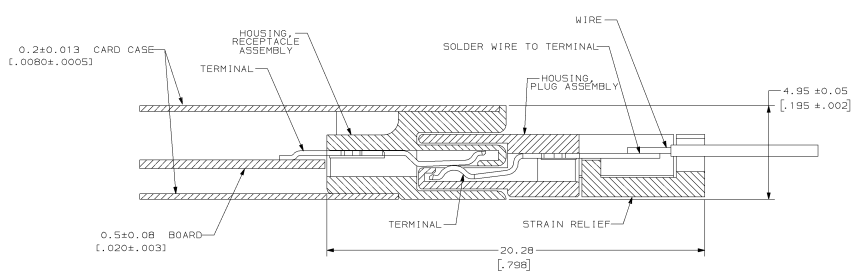
THIS DRAWING IS A CONTROLLED DOCUMENT FOR AMP INCORPORATED. IT IS SUBJECT TO CHANGE AND THE CONTROLLING AND MOST RECENT REVISION SHOULD BE CONTACTED FOR THE LATEST REVISION.

DRAWING MADE IN THIRD ANGLE PROJECTION
 THIS DRAWING IS UNPUBLISHED.
 RELEASED FOR PUBLICATION
 BY AMP INCORPORATED. ALL INTERNATIONAL RIGHTS RESERVED.
 © Copyright 19

REVOLUTIONS				DATE	APP
NO	BY	DATE	DESCRIPTION		
AA	23		SEE SHEET 1	-	-



RECEPTACLE ASSEMBLY (TYPE I) MATED TO PLUG ASSEMBLY
 SCALE 10:1



RECEPTACLE ASSEMBLY (TYPE II) MATED TO PLUG ASSEMBLY
 SCALE 10:1

DO NOT SCALE PRINT. UNLESS SPECIFIED DIMENSIONS IN mm (INCHES) TOLERANCES ON: 1 P.L.C. DEC # 2 P.L.C. DEC # 3 P.L.C. DEC # ANGLES #		DR 6-30-52 RW BARKER	PART NO	
MATERIAL #		CHK 11-15-52 D. HUSSEY	AMP Incorporated Harrisburg, PA 17105-3608	
FINISH #		APPR 11-6-52 E. MADON	NAME	
APPLICATION SPEC		PRODUCT SPEC	PLUG ASSEMBLY, MEMORY CARD	
WEIGHT		SIZE	CAGE CODE	DRAWING NO
		D	00779	557715
		SCALE	B:1	SHEET 2 OF 2

THIS DRAWING IS A CONTROLLED DOCUMENT FOR AMP INCORPORATED. IT IS SUBJECT TO CHANGE AND THE CONTROLLING AND HISTORY INFORMATION SHOULD BE CONTACTED FOR THE LATEST REVISION.