

AMPHENOL PART NUMBER CONFIGURATION:

U65 - X XX - X X 6 XXX

INFINITY RECEPTACLE STYLE

- B = R/A SMT, 2 LOCATION AND 4 SOLDERING POSTS
- D = R/A SMT, 2 LOCATION AND 2 7.0 mm DEEP SCREW MOUNT HOLES AND 2 THRU SCREW MOUNT HOLES
- E = R/A SMT, 2 LOCATION AND 2 1.5 mm DEEP SCREW MOUNT HOLES AND 2 THRU SCREW MOUNT HOLES

CONNECTOR TYPE

- 04 = 4X
- 12 = 12X

PLATING

- 1 = 50µ" GOLD
- 2 = 30µ" GOLD
- 3 = GOLD FLASH OVER PALLADIUM-NICKEL (LEAD FREE)
- 4 = 50µ" GOLD (RoHS COMPLIANT)
- 5 = 30µ" GOLD (RoHS COMPLIANT)
- B = 50µ" GOLD (RoHS COMPLIANT)
- C = 30µ" GOLD (RoHS COMPLIANT)

OPTION

- 0= 2 PIECE LOCKING PLATE (SHIPPED LOOSE)
- 1= ONE PIECE LOCKING PLATE (SHIPPED LOOSE)
- 2= NO LOCKING PLATE
- 3= NO LOCKING PLATE AND NO GASKET
- 4= NO LOCKING PLATE WITH SPECIAL EMI GASKET (LANYARD ONLY)

1. MATERIAL:

PLASTIC HOUSING: HIGH TEMPERATURE RESISTANT NYLON, FLAMMABILITY RATING UL94V-0.

CONTACTS:

- PHOSPHOR BRONZE
- PLATING OPTION 1 OR 2 (50µ" OR 30µ" GOLD): 50µ" [1.27 µm] OR 30µ" [0.76 µm] MIN. GOLD OVER 50µ" [1.27 µm] MIN. NICKEL ON CONTACT MATING SURFACES. 150µ" [3.81 µm] MIN. TIN-LEAD (90/10) OVER 50µ" [1.27 µm] NICKEL ON CONTACT TAILS.
- PLATING OPTION 3 (GOLD FLASH OVER PALLADIUM-NICKEL): 2µ" [0.05 µm] MIN. GOLD OVER 25µ" [0.635 µm] MIN. PALLADIUM-NICKEL ON CONTACT MATING SURFACES. 0.3µ" [0.007 µm] MIN. GOLD OVER 1.2µ" [0.03 µm] MIN.
- PALLADIUM-NICKEL ON CONTACT TAILS. 50µ" [1.27 µm] MIN. NICKEL UNDER PLATING.
- PLATING OPTION 4 OR 5 (RoHS) (50µ" OR 30µ" GOLD): 50µ" [1.27 µm] OR 30µ" [0.76 µm] MIN. GOLD OVER 50µ" [1.27 µm] MIN. NICKEL ON CONTACT MATING SURFACES. 2µ" [0.05 µm] MIN. GOLD OVER 50µ" [1.27 µm] MIN. NICKEL ON CONTACT TAILS.
- PLATING OPTION B OR C (RoHS) (50µ" OR 30µ" GOLD): 50µ" [1.27 µm] OR 30µ" [0.76 µm] MIN. GOLD OVER 50µ" [1.27 µm] MIN. NICKEL ON CONTACT MATING SURFACES. 100-150µ" [2.54-3.81 µm] MATTE TIN OVER 50µ" [1.27 µm] MIN. NICKEL ON CONTACT TAILS.

METAL SHELL: DIE CASTING ALLOY

- PLATING: 100µ" [2.54 µm] MIN. NICKEL OVER COPPER UNDER LAYER
- GASKET: STAINLESS STEEL
- LOCKING PLATE: STAINLESS STEEL
- M2 SCREWS: STEEL WITH ZINC PLATING

2. TEMPERATURE RANGE: -40°C TO +85°C

REVISIONS			
SYM	ZONE	ECN, ERN NO.	DATE APPRD.
G		MODIFIED THREAD NOTE ON P3	JUL 27 '10 A.G
H		"D" CONFIGURATION ADDED ON P1	JAN 12 '11 A.G

THIS IS A CAD DRAWING. DO NOT MANUALLY REVISE.

PACKAGING/SPECIAL

- (NOTE: ALL "M" OPTIONS ARE FOR STYLE E WITH .062" TO .093" THICK PCB'S ONLY)
- NO DIGIT = TRAY PACKAGING NO REAR COVER
- C = TRAY PACKAGING WITH REAR COVER (SHIPPED LOOSE)
- M = TRAY PACKAGING, NO REAR COVER, M2 SCREWS INCLUDED (SHIPPED LOOSE)
- CM = TRAY PACKAGING, W/ REAR COVER, M2 SCREWS INCLUDED (BOTH SHIPPED LOOSE)
- T = TAPE & REEL PACKAGING NO REAR COVER
- CT = TAPE & REEL PAKAGING W/ REAR COVER (SHIPPED LOOSE)
- MT = TAPE & REEL PAKAGING, NO REAR COVER, M2 SCREWS INCLUDED (SHIPPED LOOSE)
- CMT = TAPE & REEL PAKAGING, W/ REAR COVER, M2 SCREWS INCLUDED (BOTH SHIPPED LOOSE)

KEYING OPTION

- 0 = NO KEYING (STD)
- 1 = KEYING 1 & 6
- 2 = KEYING 2 & 6
- 3 = KEYING 3 & 5
- 4 = KEYING 4 & 5

MOUNTING STYLE

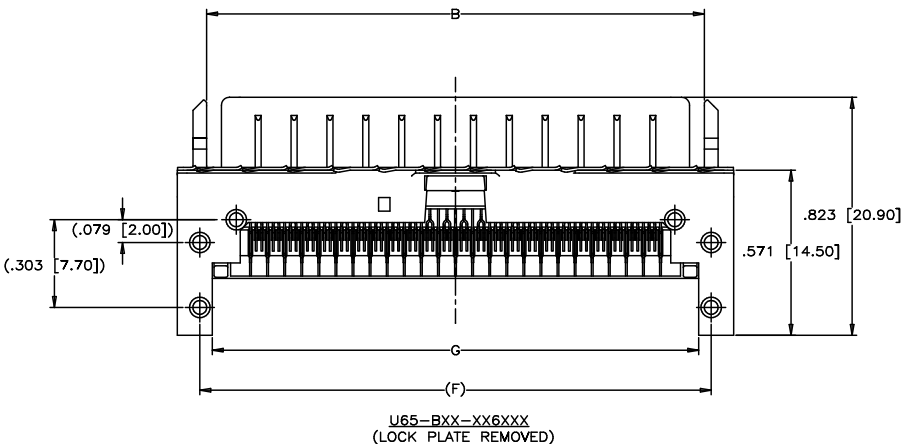
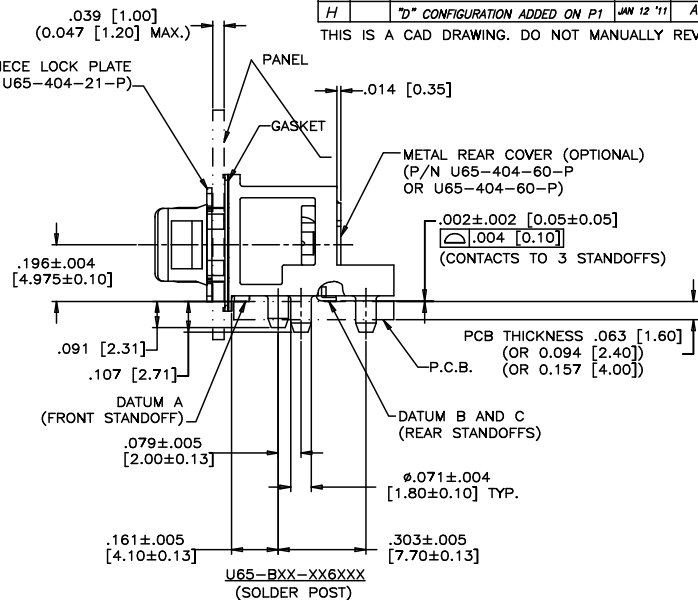
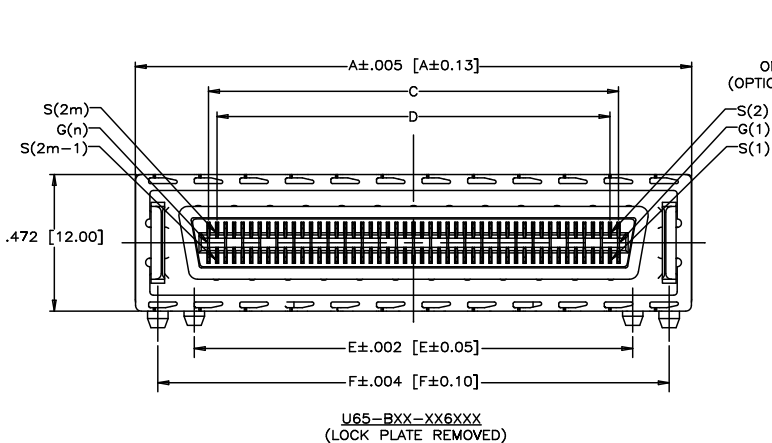
- LANYARD LATCH, (4) SOLDER POSTS OR (4) MOUNTING HOLES

DRAWN	M.LONG	DATE	2008/08/17	Amphenol Canada Corp.		
DESIGNED						
CHECKED	J.SI	DATE	2008/08/17			
I. E. APPRD.						
Q. A. APPRD.				TITLE		
DWG. APPRD.				INFINITY 4X/12X RECEPTACLE, LANYARD STYLE, FIXED BOARD, RIGHT ANGLE SMT, (4) SOLDER POSTS OR (4) MOUNTING HOLES		
ENG. REL. NO.				DWG	DRAWING NO.	REV.
REF.				A	P-U65-XXX-XX6XXX	H
DIMENSIONS ARE IN INCHES [mm]	CODE ID. NO.	03554	SCALE	2/1	WT.	-----
					SURF.	-----
						SHEET 1 OF 4

THIS DOCUMENT CONTAINS PROPRIETARY INFORMATION AND SUCH INFORMATION MAY NOT BE DISCLOSED TO OTHERS FOR ANY PURPOSE OR USED FOR MANUFACTURING PURPOSES WITHOUT WRITTEN PERMISSION FROM AMPHENOL CANADA CORP.

REVISIONS				
SYM	ZONE	ECN, ERN NO.	DATE	APPRD.
G		MODIFIED THREAD NOTE ON P3	JUL 27 '10	A.G
H		"D" CONFIGURATION ADDED ON P1	JAN 12 '11	A.G

THIS IS A CAD DRAWING. DO NOT MANUALLY REVISE.



DIMENSION TABLE:

PART NUMBER	U65-X04-XX6XXX	U65-X12-XX6XXX
A	.978 [24.85]	1.923 [48.85]
B	.776 [19.70]	1.720 [43.70]
C	.472 [12.00]	1.417 [36.00]
D	.413 [10.50]	1.358 [34.50]
E	.571 [14.50]	1.516 [38.50]
F	.823 [20.90]	1.768 [44.90]
G	.736 [18.70]	1.681 [42.70]
H	.894 [22.70]	1.839 [46.70]
K	.776 [19.70]	1.720 [43.70]
m	m = 1 - 8	m = 1 - 24
n	n = 1 - 9	n = 1 - 25
P	.207 [5.25]	.679 [17.25]
R	.089 [2.25]	.561 [14.25]
S	.148 [3.75]	.620 [15.75]

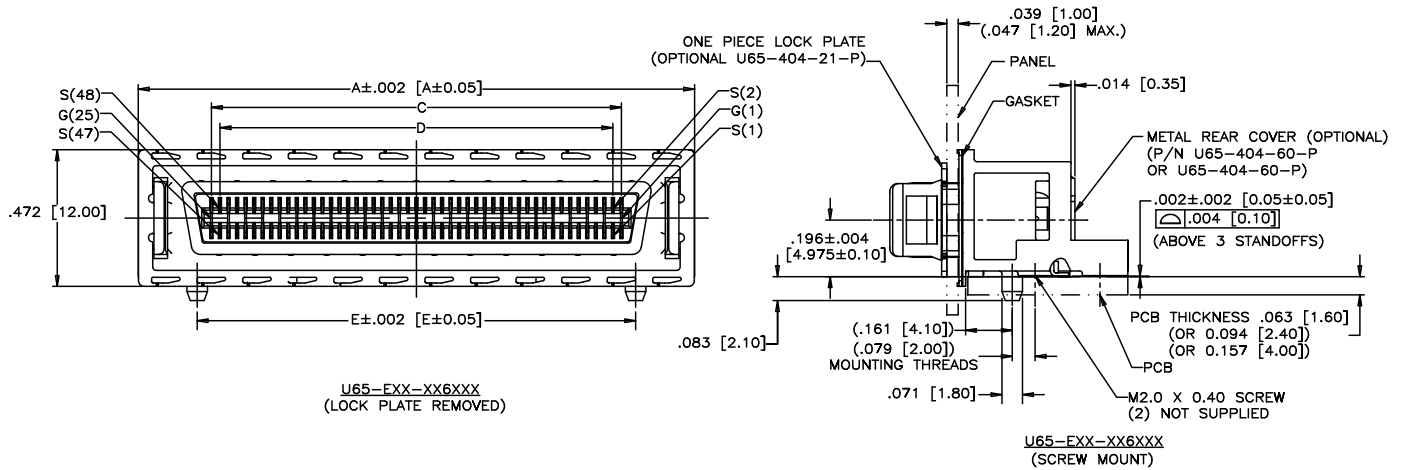
\*\* REFER TO [mm] AS PRIMARY DIMENSIONS.

THIS DOCUMENT CONTAINS PROPRIETARY INFORMATION AND SUCH INFORMATION MAY NOT BE DISCLOSED TO OTHERS FOR ANY PURPOSE OR USED FOR MANUFACTURING PURPOSES WITHOUT WRITTEN PERMISSION FROM AMPHENOL CANADA CORP.

DRAWN M.LONG	DATE 2009/05/17	Amphenol Canada Corp.
DESIGNED		
CHECKED J.SI	2009/05/17	TITLE INFINITY 4X/12X RECEPTACLE, LANYARD STYLE, FIXED BOARD, RIGHT ANGLE SMT, (4) SOLDER POSTS OR (4) MOUNTING HOLES
I. E. APPRD.		
Q. A. APPRD.		DWG. DRAWING NO. P-U65-XXX-XX6XXX
DWG. APPRD.		
ENG. REL. NO.		REV. H
REF.		
DIMENSIONS ARE IN INCHES [mm]	CODE ID. NO. 03554	SCALE 2/1 WT. ----- SURF. ----- SHEET 2 OF 4

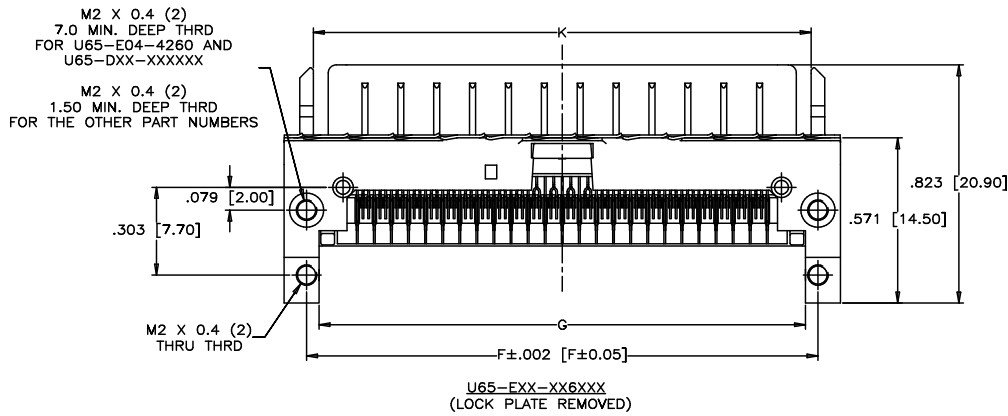
REVISIONS			
SYM	ZONE	ECN, ERN NO.	DATE
G		MODIFIED THREAD NOTE ON P3	JUL 27 '10
H		"D" CONFIGURATION ADDED ON P1	JAN 12 '11

THIS IS A CAD DRAWING. DO NOT MANUALLY REVISE.



U65-FXX-XX6XXX  
(LOCK PLATE REMOVED)

U65-FXX-XX6XXX  
(SCREW MOUNT)



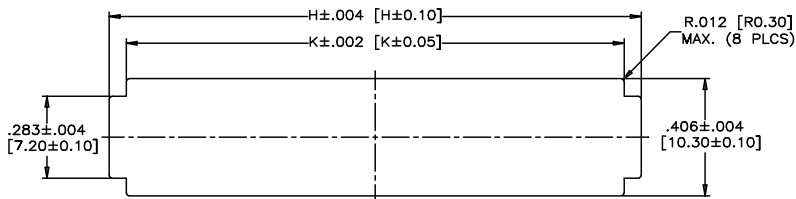
U65-FXX-XX6XXX  
(LOCK PLATE REMOVED)

DRAWN	M.LONG	DATE	2009/05/17	Amphenol Canada Corp.	
DESIGNED					
CHECKED	J.SI	DATE	2009/06/17		
I. E. APPRD.					
Q. A. APPRD.				TITLE	
DWG. APPRD.				INFINITY 4X/12X RECEPTACLE, LANYARD STYLE, FIXED BOARD, RIGHT ANGLE SMT, (4) SOLDER POSTS OR (4) MOUNTING HOLES	
ENG. REL. NO.		DWG	A	DRAWING NO.	P-U65-XXX-XX6XXX
REF.				REV.	H
DIMENSIONS ARE IN		CODE ID. NO.	03554	SCALE	2/1
INCHES [mm]				WT.	-----
				SURF.	-----
				SHEET	3 OF 4

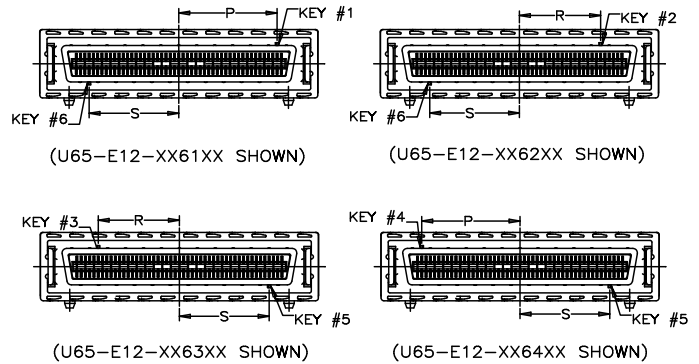
THIS DOCUMENT CONTAINS PROPRIETARY INFORMATION AND SUCH INFORMATION MAY NOT BE DISCLOSED TO OTHERS FOR ANY PURPOSE OR USED FOR MANUFACTURING PURPOSES WITHOUT WRITTEN PERMISSION FROM AMPHENOL CANADA CORP.

REVISIONS				
SYM	ZONE	ECN, ERN NO.	DATE	APPRD.
G		MODIFIED THREAD NOTE ON P3	JUL 27 '10	A.G
H		"D" CONFIGURATION ADDED ON P1	JAN 12 '11	A.G

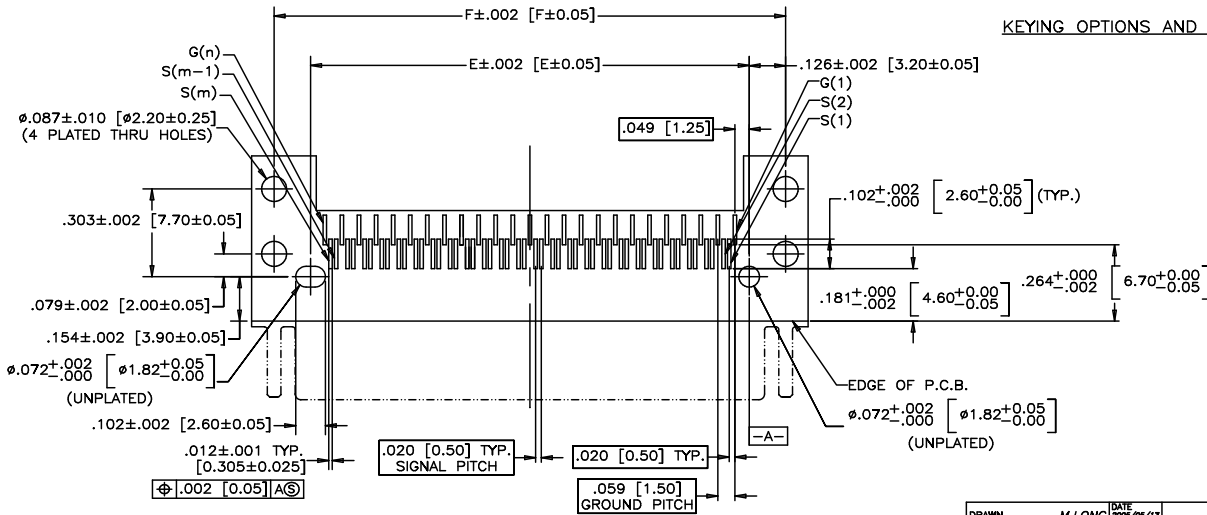
THIS IS A CAD DRAWING. DO NOT MANUALLY REVISE.



RECOMMENDED PANEL CUTOUT



KEYING OPTIONS AND LOCATIONS



RECOMMENDED P.C.B. LAYOUT  
(COMPONENTS SIDE OF BOARD)

THIS DOCUMENT CONTAINS PROPRIETARY INFORMATION AND SUCH INFORMATION MAY NOT BE DISCLOSED TO OTHERS FOR ANY PURPOSE OR USED FOR MANUFACTURING PURPOSES WITHOUT WRITTEN PERMISSION FROM AMPHENOL CANADA CORP.

DRAWN	M.LONG	DATE	2008/05/17	Amphenol Canada Corp.				
DESIGNED								
CHECKED	J.SI	2008/06/17						
I. E. APPRD.								
Q. A. APPRD.				TITLE				
DWG. APPRD.				INFINITY 4X/12X RECEPTACLE, LANYARD STYLE, FIXED BOARD, RIGHT ANGLE SMT, (4) SOLDER POSTS OR (4) MOUNTING HOLES				
ENG. REL. NO.				DWG	DRAWING NO.	REV.		
REF.				A	P-U65-XXX-XX6XXX	H		
DIMENSIONS ARE IN		CODE ID. NO.	03554	SCALE	2/1	WT.	SURF.	SHEET 4 OF 4