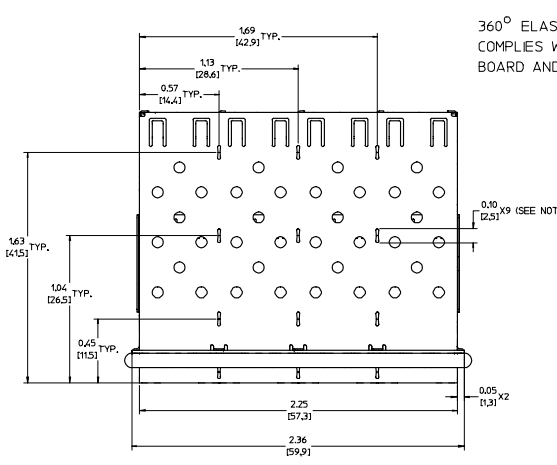
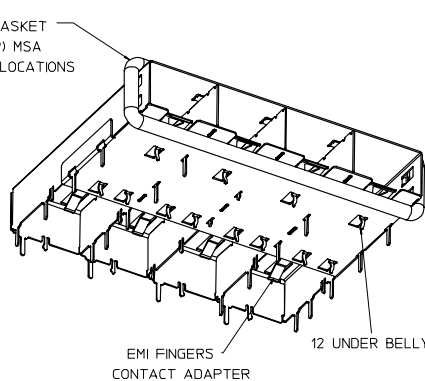


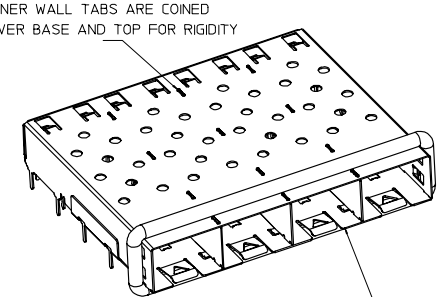
20 19 18 17 16 15 14 13 12 11 10 9 8 7 6 5 4 3 2 1



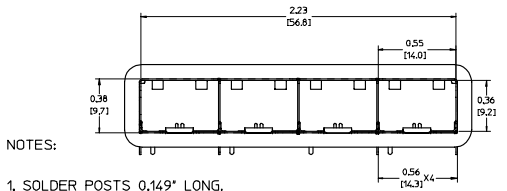
360° ELASTOMER GASKET
COMPLIES WITH (SFP) MSA
BOARD AND BEZEL LOCATIONS



INNER WALL TABS ARE CONIED
OVER BASE AND TOP FOR RIGIDITY

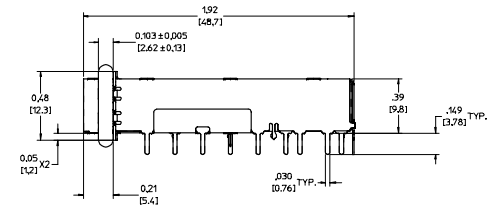


DIMENSIONS OF EACH INNER CAGE DESIGNED
TO FUNCTION WITH SMALL FORM-FACTOR
PLUGGABLE (SFP) TRANSCEIVER



NOTES:

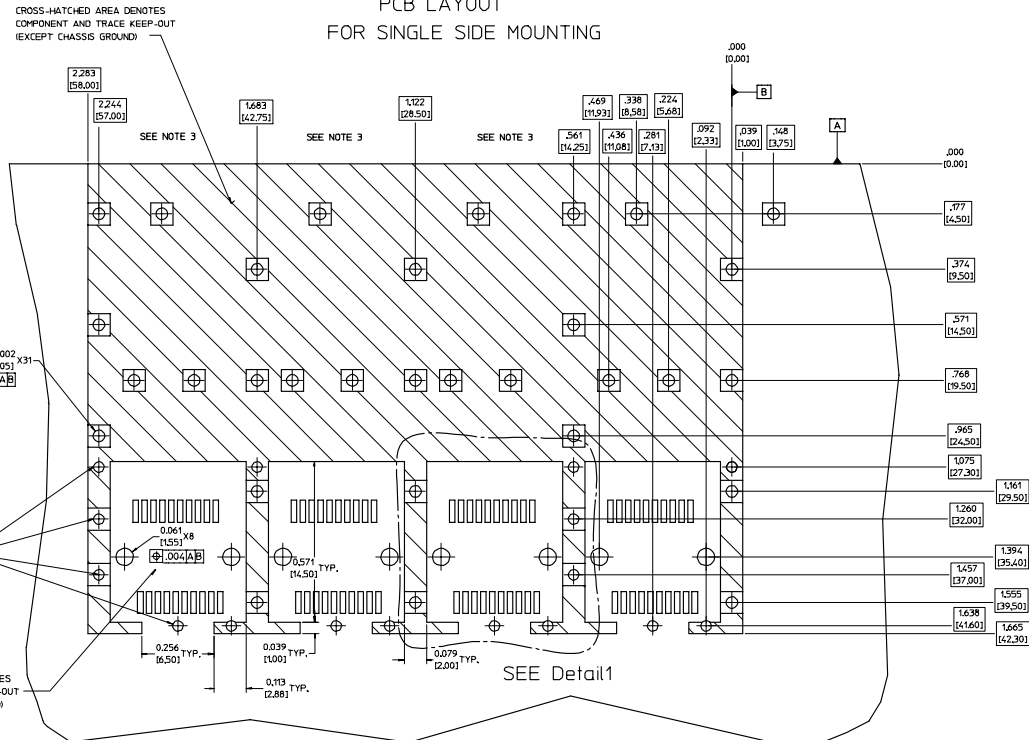
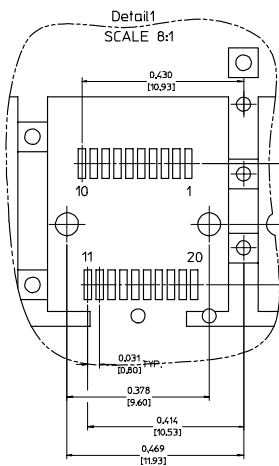
1. SOLDER POSTS 0.149" LONG.
 2. MATERIAL: COPPER ALLOY
PLATING: NONE
- NOTE: A NICKEL PLATED VERSION IS AVAILABLE.
REFER TO DOCUMENT SD-74728-421.
3. REFERENCE DOCUMENTS:
PRODUCT SPECIFICATION: PS-74728-000
COSMETIC SPECIFICATIONS: WI-HP-7-2774 AND WI-HPA-7-0093
 4. THIS PART MEETS THE RESTRICTION OF HAZARDOUS SUBSTANCES IN
ELECTRICAL AND ELECTRONIC EQUIPMENT (ROHS) DIRECTIVE (2002/95/EC).



ENTER DESCRIPTION IEC NO. LIST 2004-0079 CHROMIUM/NICKEL APPROVED FOR CONSTRUCTION	QUALITY SYMBOLS	GENERAL TOLERANCES (UNLESS SPECIFIED)	DIMENSION STYLE	SCALE	DESIGN UNITS	THIRD ANGLE PROJECTION
	$\nabla=0$ $\nabla=0$	mm INCH 4 PLACES ± --- ± --- 3 PLACES ± --- ± 0.05 2 PLACES ± 0.13 ± 0.1 1 PLACE ± 0.25 ± --- ANGULAR ± 1°	IN/MM DRAWN BY DATE KS MONSO 2003/11/01 CHECKED BY DATE BRUSSELL 2003/11/01 APPROVED BY DATE BRUSSELL 2003/11/01	3:1	METRIC	
	DRAFT WHERE APPLICABLE MUST REMAIN WITHIN DIMENSIONS	MATERIAL NO. 739270412 DOCUMENT NO. SD-73927-412	TITLE 1X4 SFP GANGED CAGE ASSEMBLY W/ ELASTOMER GASKET, SOLDER POST MOLEX INCORPORATED	SHEET NO. 1 OF 4		
	THIS DRAWING CONTAINS INFORMATION THAT IS PROPRIETARY TO MOLEX INCORPORATED AND SHOULD NOT BE USED WITHOUT WRITTEN PERMISSION					

19 18 17 16 15 14 13 12 11 10 9 8 7 6 5 4 3 2 1

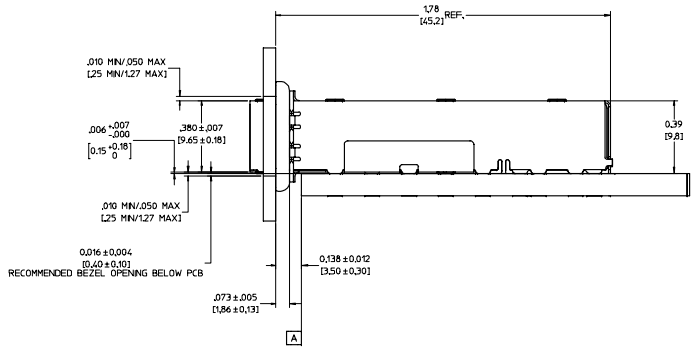
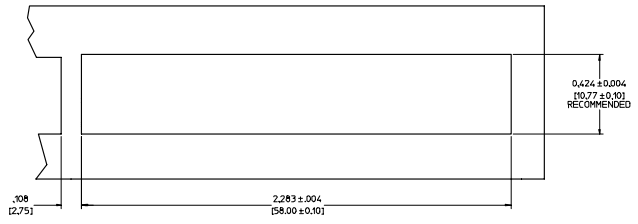
PCB LAYOUT FOR SINGLE SIDE MOUNTING



- NOTES:**
- PADS AND VIAS GO TO CHASSIS GROUND, (34 PLACES). RECOMMENDED PADS TO BE 2mm SQUARE.
 - PLATING OPTIONAL FOR THROUGH HOLES, (12 PLACES).
 - RECOMMENDED PLATING INCLUDES HASL, IMMERSION (GOLD, SILVER, OR TIN), AND OSP.
 - HOLE PATTERN REPEATS FOR EACH PORT, SPACING BETWEEN PORTS IS 14.25mm.
 - CONNECTOR PAD LAYOUT PER SFP MSA. WILL ACCOMMODATE MOLEX CONNECTOR SERIES 74441 OR EQUIVALENT.

ENTER DESCRIPTION EC NO. LST2004-0079 DRINKS/MONSON 2006/01/17 CHROBRUSSELL 2006/01/28 APPROVED DESCRIPTION	QUALITY SYMBOLS	GENERAL TOLERANCES (UNLESS SPECIFIED)	DIMENSION STYLE	SCALE	DESIGN UNITS	THIRD ANGLE PROJECTION
	▽=0	mm INCH	IN/MM	6:1	METRIC	☉
	▽=0	4 PLACES ± --- ± ---	DRAWN BY	DATE	TITLE	
		3 PLACES ± --- ± 0.05	KS MONSO	2003/11/01	1X4 SFP GANGED CAGE ASSEMBLY W/ ELASTOMER GASKET, SOLDER POST	
	2 PLACES ± 0.13 ± 0.01	CHECKED BY	DATE			
	1 PLACE ± 0.25 ± ---	APPROVED BY	DATE			
	ANGULAR ± 1 °	BRUSSELL	2003/11/01	Molex MOLEX INCORPORATED		
	DRAFT WHERE APPLICABLE MUST REMAIN WITHIN DIMENSIONS	MATERIAL NO.	739270412	DOCUMENT NO.	SD-73927-412	SHEET NO. 2 OF 4
		SIZE	D	THIS DRAWING CONTAINS INFORMATION THAT IS PROPRIETARY TO MOLEX INCORPORATED AND SHOULD NOT BE USED WITHOUT WRITTEN PERMISSION		

BEZEL AND BOARD POSITION DIMENSIONS FOR SINGLE SIDE MOUNTING



ENTER DESCRIPTION IEC NO. LIST 73927-0079 CHROMBROSSELL 2006/01/28 APPROVED DESCRIPTION REF	QUALITY SYMBOLS	GENERAL TOLERANCES (UNLESS SPECIFIED)	DIMENSION STYLE	SCALE	DESIGN UNITS	THIRD ANGLE PROJECTION
	▽=0 ▽=0	mm INCH 4 PLACES ± --- ± --- 3 PLACES ± --- ± 0.005 2 PLACES ± 0.13 ± 0.1 1 PLACE ± 0.25 ± --- ANGULAR ± 1 °	IN/MM DRAWN BY DATE KS HONGSO 2003/11/01 CHECKED BY DATE BRUSSELL 2003/11/01 APPROVED BY DATE BRUSSELL 2003/11/01	4:1	METRIC	TITLE 1X4 SFP GANGED CAGE ASSEMBLY W/ ELASTOMER GASKET, SOLDER POST MOLEX INCORPORATED
	DRAFT WHERE APPLICABLE MUST REMAIN WITHIN DIMENSIONS	MATERIAL NO. 739270412	DOCUMENT NO. SD-73927-412	SHEET NO. 3 OF 4		
	THIS DRAWING CONTAINS INFORMATION THAT IS PROPRIETARY TO MOLEX INCORPORATED AND SHOULD NOT BE USED WITHOUT WRITTEN PERMISSION					

DATE	REV	CHANGES	COMMENTS
2003/11/11	1	PRELIMINARY DOCUMENT	N/A
2004/03/25	A	INITIAL RELEASE	N/A
2004/10/09	B	UPDATED VIEWS	DOCUMENT CHANGE ONLY
2005/10/07	C	ADDED PCB AND BEZEL DETAILS, UPDATED NOTES.	DOCUMENT CHANGE ONLY

ENTER DESCRIPTION IEC NO. UST2004-0079 CHROMINSOHN 2006/01/17 CHROMINSOHN 2006/01/28 APPROVED BY DESCRIPTION	QUALITY SYMBOLS	GENERAL TOLERANCES (UNLESS SPECIFIED)	DIMENSION STYLE	SCALE	DESIGN UNITS	THIRD ANGLE PROJECTION																														
	$\nabla=0$ $\nabla=0$	<table border="1"> <tr> <th></th> <th>mm</th> <th>INCH</th> </tr> <tr> <td>4 PLACES</td> <td>$\pm .005$</td> <td>$\pm .0004$</td> </tr> <tr> <td>3 PLACES</td> <td>$\pm .005$</td> <td>$\pm .0005$</td> </tr> <tr> <td>2 PLACES</td> <td>± 0.13</td> <td>$\pm .01$</td> </tr> <tr> <td>1 PLACE</td> <td>± 0.25</td> <td>$\pm .01$</td> </tr> <tr> <td colspan="2">ANGULAR</td> <td>$\pm 1^\circ$</td> </tr> </table>		mm	INCH	4 PLACES	$\pm .005$	$\pm .0004$	3 PLACES	$\pm .005$	$\pm .0005$	2 PLACES	± 0.13	$\pm .01$	1 PLACE	± 0.25	$\pm .01$	ANGULAR		$\pm 1^\circ$	<table border="1"> <tr> <th>DRAWN BY</th> <th>DATE</th> </tr> <tr> <td>KS HONSO</td> <td>2003/11/01</td> </tr> <tr> <th>CHECKED BY</th> <th>DATE</th> </tr> <tr> <td>BRUSSELL</td> <td>2003/11/01</td> </tr> <tr> <th>APPROVED BY</th> <th>DATE</th> </tr> <tr> <td>BRUSSELL</td> <td>2003/11/01</td> </tr> </table>	DRAWN BY	DATE	KS HONSO	2003/11/01	CHECKED BY	DATE	BRUSSELL	2003/11/01	APPROVED BY	DATE	BRUSSELL	2003/11/01	1:1	METRIC	
		mm	INCH																																	
	4 PLACES	$\pm .005$	$\pm .0004$																																	
3 PLACES	$\pm .005$	$\pm .0005$																																		
2 PLACES	± 0.13	$\pm .01$																																		
1 PLACE	± 0.25	$\pm .01$																																		
ANGULAR		$\pm 1^\circ$																																		
DRAWN BY	DATE																																			
KS HONSO	2003/11/01																																			
CHECKED BY	DATE																																			
BRUSSELL	2003/11/01																																			
APPROVED BY	DATE																																			
BRUSSELL	2003/11/01																																			
		DRAFT WHERE APPLICABLE MUST REMAIN WITHIN DIMENSIONS	<table border="1"> <tr> <th>MATERIAL NO.</th> <th>DOCUMENT NO.</th> <th>SHEET NO.</th> </tr> <tr> <td>739270412</td> <td>SD-73927-412</td> <td>4 OF 4</td> </tr> </table>	MATERIAL NO.	DOCUMENT NO.	SHEET NO.	739270412	SD-73927-412	4 OF 4	TITLE 1X4 SFP GANGED CAGE ASSEMBLY W/ ELASTOMER GASKET, SOLDER POST MOLEX INCORPORATED																										
MATERIAL NO.	DOCUMENT NO.	SHEET NO.																																		
739270412	SD-73927-412	4 OF 4																																		
THIS DRAWING CONTAINS INFORMATION THAT IS PROPRIETARY TO MOLEX INCORPORATED AND SHOULD NOT BE USED WITHOUT WRITTEN PERMISSION																																				