

AMPHENOL PART NUMBER CONFIGURATION:

U65 - X XX - X X 7 XXX

INFINITY  
RECEPTACLE

STYLE

B = R/A SMT, 2 LOCATION  
AND 4 SOLDERING POSTS

E = R/A SMT, 2 LOCATION  
AND 4 SCREW MOUNT HOLES

CONNECTOR TYPE

04 = 4X  
12 = 12X

PLATING

1 = 50µ" GOLD  
2 = 30µ" GOLD  
3 = GOLD FLASH OVER  
PALLADIUM-NICKEL (LEAD FREE)  
4 = 50µ" GOLD (RoHS COMPLIANT)  
5 = 30µ" GOLD (RoHS COMPLIANT)  
B = 50µ" GOLD (RoHS COMPLIANT)  
C = 30µ" GOLD (RoHS COMPLIANT)

OPTION

0 = 2 PIECE LOCKING PLATE (SHIPPED LOOSE)  
1 = ONE PIECE LOCKING PLATE (SHIPPED LOOSE)  
2 = NO LOCKING PLATE

PACKAGING/SPECIAL

NO DIGIT = TRAY PACKAGING  
NO REAR COVER  
C = TRAY PACKAGING  
WITH REAR COVER (SHIPPED LOOSE)  
T = TAPE & REEL PACKAGING  
NO REAR COVER  
CT = TAPE & REEL PACKAGING  
WITH REAR COVER (SHIPPED LOOSE)

KEYING OPTION

0 = NO KEYING (STD)

MOUNTING STYLE

LANYARD LATCH (WITH TOP MOUNTING EAR)

REVISIONS			
SYM	ZONE	ECN, ERN NO.	DATE
C		PROPOSAL	APR16/10
			Z.L.

THIS IS A CAD DRAWING. DO NOT MANUALLY REVISE.

1. MATERIAL:

PLASTIC HOUSING:  
HIGH TEMPERATURE RESISTANT NYLON, FLAMMABILITY RATING UL94V-0.

CONTACTS:

PHOSPHOR BRONZE

PLATING OPTION 1 OR 2 (50µ" OR 30µ" GOLD): 50µ" [1.27 µm] OR 30µ" [0.76 µm] MIN. GOLD OVER 50µ" [1.27 µm] MIN. NICKEL ON CONTACT MATING SURFACES. 150µ" [3.81 µm] MIN. TIN-LEAD (90/10) OVER 50µ" [1.27 µm] NICKEL ON CONTACT TAILS.

PLATING OPTION 3 (GOLD FLASH OVER PALLADIUM-NICKEL): 2µ" [0.05 µm] MIN. GOLD OVER 25µ" [0.635 µm] MIN. PALLADIUM-NICKEL ON CONTACT MATING SURFACES. 0.3µ" [0.007 µm] MIN. GOLD OVER 1.2µ" [0.03 µm] MIN. PALLADIUM-NICKEL ON CONTACT TAILS. 50µ" [1.27 µm] MIN. NICKEL UNDER PLATING.

PLATING OPTION 4 OR 5 (RoHS) (50µ" OR 30µ" GOLD): 50µ" [1.27 µm] OR 30µ" [0.76 µm] MIN. GOLD OVER 50µ" [1.27 µm] MIN. NICKEL ON CONTACT MATING SURFACES. 2µ" [0.05 µm] MIN. GOLD OVER 50µ" [1.27 µm] MIN. NICKEL ON CONTACT TAILS.

PLATING OPTION B OR C (RoHS) (50µ" OR 30µ" GOLD): 50µ" [1.27 µm] OR 30µ" [0.76 µm] MIN. GOLD OVER 50µ" [1.27 µm] MIN. NICKEL ON CONTACT MATING SURFACES. 100-150µ" [2.54-3.81 µm] MATTE TIN OVER 50µ" [1.27 µm] MIN. NICKEL ON CONTACT TAILS.

METAL SHELL: DIE CASTING ALLOY

PLATING: 100µ" [2.54 µm] MIN. NICKEL OVER COPPER UNDER LAYER

GASKET: STAINLESS STEEL

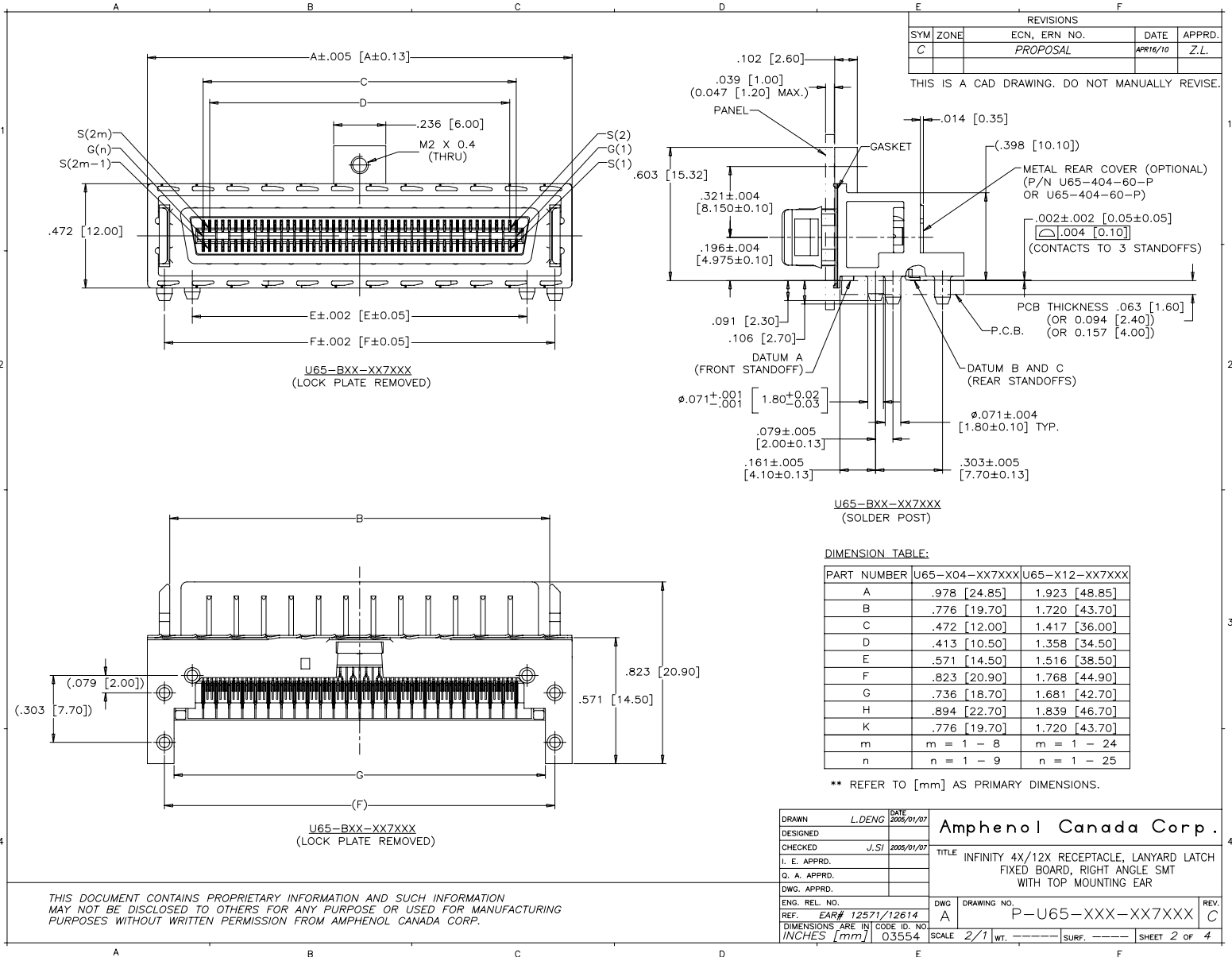
LOCKING PLATE: STAINLESS STEEL

2. TEMPERATURE RANGE:

-40°C TO +85°C

THIS DOCUMENT CONTAINS PROPRIETARY INFORMATION AND SUCH INFORMATION MAY NOT BE DISCLOSED TO OTHERS FOR ANY PURPOSE OR USED FOR MANUFACTURING PURPOSES WITHOUT WRITTEN PERMISSION FROM AMPHENOL CANADA CORP.

DRAWN	L.DENG	DATE	2005/01/07	Amphenol Canada Corp.	
DESIGNED				TITLE INFINITY 4X/12X RECEPTACLE, LANYARD LATCH	
CHECKED	J.SI	DATE	2005/01/07	FIXED BOARD, RIGHT ANGLE SMT	
I. E. APPRD.				WITH TOP MOUNTING EAR	
Q. A. APPRD.				DWG	DRAWING NO.
DWG. APPRD.				A	P-U65-XXX-XX7XXX
ENG. REL. NO.				SCALE	2/1
REF. EAR# 12571/12614				WT.	-----
DIMENSIONS ARE IN INCHES [mm]				SURF.	-----
CODE ID. NO. 03554				SHEET	1 OF 4



REVISIONS			
SYM	ZONE	ECN, ERN NO.	DATE
C		PROPOSAL	APR16/10
			Z.L.

THIS IS A CAD DRAWING. DO NOT MANUALLY REVISE.

**DIMENSION TABLE:**

PART NUMBER	U65-X04-XX7XXX	U65-X12-XX7XXX
A	.978 [24.85]	1.923 [48.85]
B	.776 [19.70]	1.720 [43.70]
C	.472 [12.00]	1.417 [36.00]
D	.413 [10.50]	1.358 [34.50]
E	.571 [14.50]	1.516 [38.50]
F	.823 [20.90]	1.768 [44.90]
G	.736 [18.70]	1.681 [42.70]
H	.894 [22.70]	1.839 [46.70]
K	.776 [19.70]	1.720 [43.70]
m	m = 1 - 8	m = 1 - 24
n	n = 1 - 9	n = 1 - 25

\*\* REFER TO [mm] AS PRIMARY DIMENSIONS.

DRAWN	L.DENG	DATE	2009/01/07
DESIGNED			
CHECKED	J.SI	DATE	2009/01/07
I. E. APPRD.			
G. A. APPRD.			
DWG. APPRD.			
ENG. REL. NO.			
REF.	EAR# 12571/12614		
DIMENSIONS ARE IN	INCHES [mm]	CODE ID. NO.	03554

**Amphenol Canada Corp.**

TITLE INFINITY 4X/12X RECEPTACLE, LANYARD LATCH FIXED BOARD, RIGHT ANGLE SMT WITH TOP MOUNTING EAR

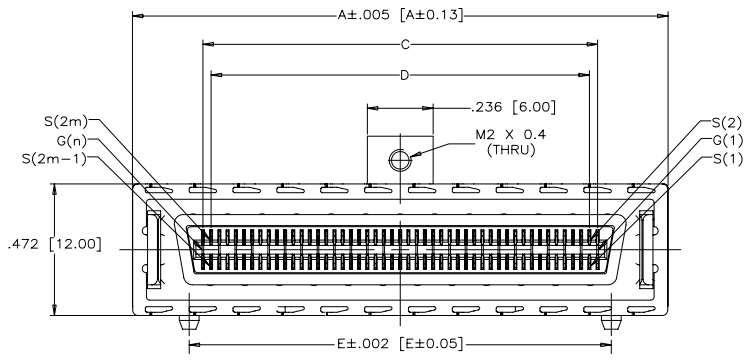
DWG. A DRAWING NO. P-U65-XXX-XX7XXX REV. C

SCALE 2/1 WT. SURF. SHEET 2 OF 4

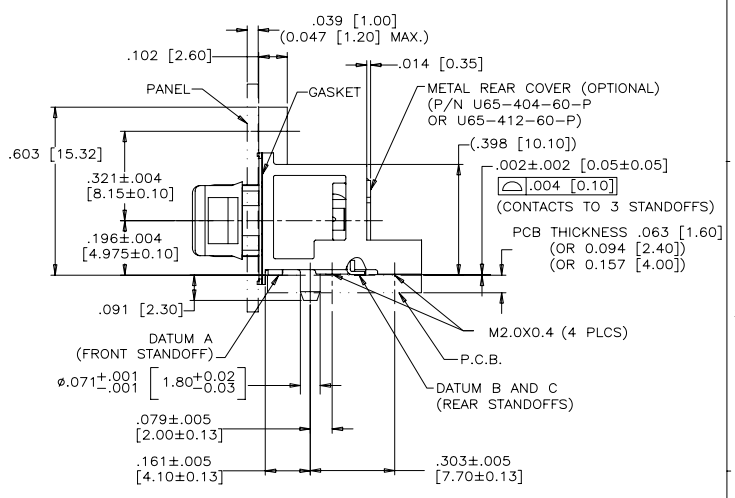
THIS DOCUMENT CONTAINS PROPRIETARY INFORMATION AND SUCH INFORMATION MAY NOT BE DISCLOSED TO OTHERS FOR ANY PURPOSE OR USED FOR MANUFACTURING PURPOSES WITHOUT WRITTEN PERMISSION FROM AMPHENOL CANADA CORP.

REVISIONS				
SYM	ZONE	ECN, ERN NO.	DATE	APPRD.
C		PROPOSAL	APR16/10	Z.L.

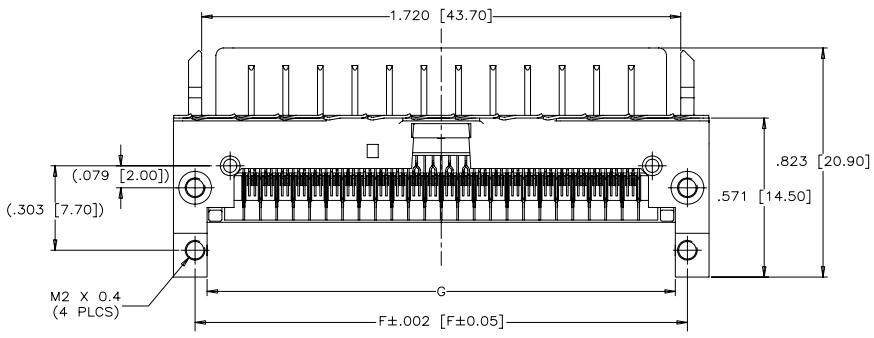
THIS IS A CAD DRAWING. DO NOT MANUALLY REVISE.



U65-FXX-XX7XXX  
(LOCK PLATE REMOVED)



U65-FXX-XX7XXX  
(SCREW MOUNT)



U65-FXX-XX7XXX  
(LOCK PLATE REMOVED)

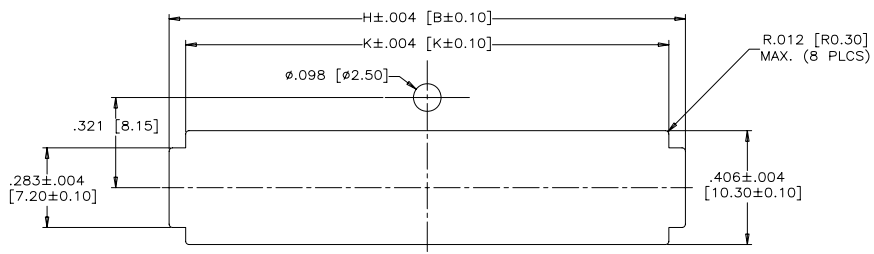
\*\* REFER TO [mm] AS PRIMARY DIMENSIONS.

THIS DOCUMENT CONTAINS PROPRIETARY INFORMATION AND SUCH INFORMATION MAY NOT BE DISCLOSED TO OTHERS FOR ANY PURPOSE OR USED FOR MANUFACTURING PURPOSES WITHOUT WRITTEN PERMISSION FROM AMPHENOL CANADA CORP.

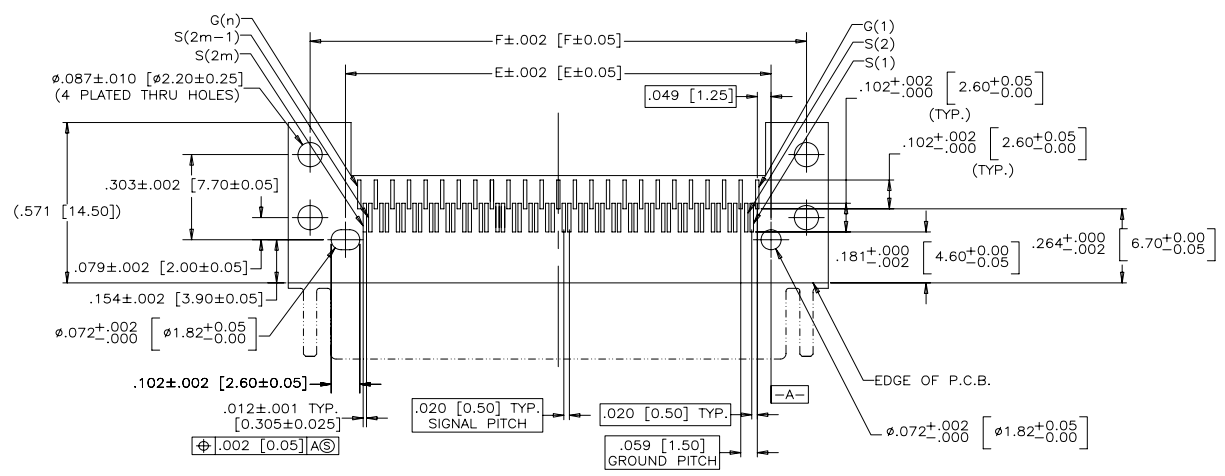
DRAWN	L.DENG	DATE	2005/01/07	Amphenol Canada Corp.
DESIGNED				
CHECKED	J.SI	DATE	2005/01/07	
I. E. APPRD.				
Q. A. APPRD.				TITLE
DWG. APPRD.				INFINITY 4X/12X RECEPTACLE, LANYARD LATCH FIXED BOARD, RIGHT ANGLE SMT WITH TOP MOUNTING EAR
ENG. REL. NO.				DWG
REF.	EAR# 12571/12614			A
DIMENSIONS ARE IN	INCHES [mm]	CODE ID. NO.	03554	DRAWING NO.
				P-U65-XXX-XX7XXX
				SCALE
				2/1
				WT.
				SURF.
				SHEET
				3 OF 4

REVISIONS				
SYM	ZONE	ECN, ERN NO.	DATE	APPRD.
C		PROPOSAL	APR16/10	Z.L.

THIS IS A CAD DRAWING. DO NOT MANUALLY REVISE.



RECOMMENDED PANEL CUTOUT



RECOMMENDED P.C.B. LAYOUT  
(COMPONENTS SIDE OF BOARD)

\*\* REFER TO [mm] AS PRIMARY DIMENSIONS.

DRAWN	L.DENG	DATE	2005/01/07	Amphenol Canada Corp.	
DESIGNED					
CHECKED	J.SJ	DATE	2005/01/07	TITLE	
I. E. APPRD.					
Q. A. APPRD.				INFINITY 4X/12X RECEPTACLE, LANYARD LATCH FIXED BOARD, RIGHT ANGLE SMT WITH TOP MOUNTING EAR	
DWG. APPRD.					
ENG. REL. NO.		DWG	A	DRAWING NO.	P-U65-XXX-XX7XXX
REF.	EAR# 12571/12614	REV.	C		
DIMENSIONS ARE IN		INCHES	[mm]	SCALE	2/1
		WT.	-----	SURF.	-----
				SHEET	4 OF 4

THIS DOCUMENT CONTAINS PROPRIETARY INFORMATION AND SUCH INFORMATION MAY NOT BE DISCLOSED TO OTHERS FOR ANY PURPOSE OR USED FOR MANUFACTURING PURPOSES WITHOUT WRITTEN PERMISSION FROM AMPHENOL CANADA CORP.