

FS1 - S02 - 1XXX

REVISIONS			
REV.	DATE	DESCRIPTION	APPROVED
3		ELASTOMERIC GASKET OPTION ADDED	ZLJ
1		ISSUE A ADDED	ZLJ

MOUNTING SCREW OPTION

- 1 = 8 mm MOUNTING SCREW SHIPPED BULK IN SAME TRAYS WITH CAGE ASSEMBLIES
- 2 = NO MOUNTING SCREW SUPPLIED
- 3 = 10 mm MOUNTING SCREW WITH LOCK WASHER SHIPPED BULK IN SAME TRAYS WITH CAGE ASSEMBLIES

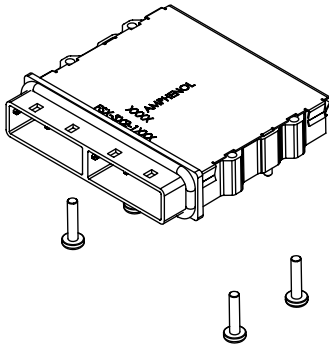
GASKET OPTION

- E = STAINLESS STEEL EMI GASKET
- F = FOAM, CHOMERICS SOFT SHIELD 4800, EMI GASKET
- C = CONDUCTIVE ELASTOMER, CHOMERICS C6305

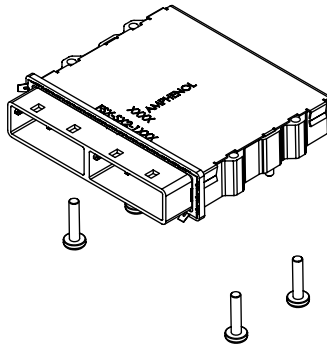
KEYING OPTION (SEE BELOW TABLE FOR FURTHER CLARIFICATION)

- 0 = NO KEY
- 1 = KEY #1 (IN ALL PORTS)
- 2 = KEY #2 (IN ALL PORTS)
- 4 = KEY #4 (IN ALL PORTS)
- 6 = KEY #6 (IN ALL PORTS)
- 7 = KEY #7 (IN ALL PORTS)
- D22 = KEY #2 AND #4 (IN ALL PORTS)
- D66 = KEY #4 AND #6 (IN ALL PORTS)
- D26 = KEY #2 AND #4 IN LEFT PORT / KEY #4 AND #6 IN RIGHT PORT
- D62 = KEY #4 AND #6 IN LEFT PORT / KEY #2 AND #4 IN RIGHT PORT

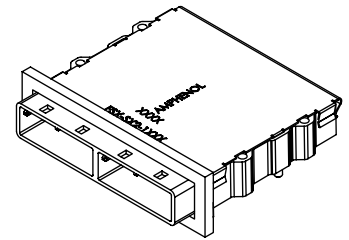
Left Key Option	Right Key Option	Part Number	Description
0	0	FS1-S02-10XX	No Key
1	1	FS1-S02-11XX	SATA 'X' Cable
4	4	FS1-S02-14XX	SAS Universal Port
7	7	FS1-S02-17XX	SATA 'M' Cable
2, 4	2, 4	FS1-S02-1D22XX	SAS Out Port
4, 6	4, 6	FS1-S02-1D66XX	SAS In Port
2, 4	4, 6	FS1-S02-1D26XX	SAS Out/In Port
4, 6	2, 4	FS1-S02-1D62XX	SAS In/Out Port



PART NUMBER: **FS1-S02-14C1** SHOWN
(CAGE ASSEMBLY WITH ELASTOMERIC GASKET AND 8mm MOUNTING SCREWS SHIPPED BULK)



PART NUMBER: **FS1-S02-14E1** SHOWN
(CAGE ASSEMBLY WITH STAINLESS STEEL GASKET AND 8mm MOUNTING SCREWS SHIPPED BULK)



PART NUMBER: **FS1-S02-14F1** SHOWN
(CAGE ASSEMBLY WITH FOAM GASKET AND 8mm MOUNTING SCREWS SHIPPED BULK)

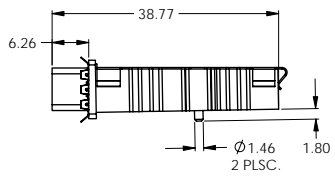
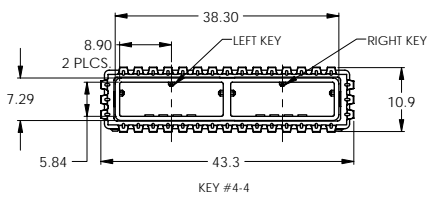
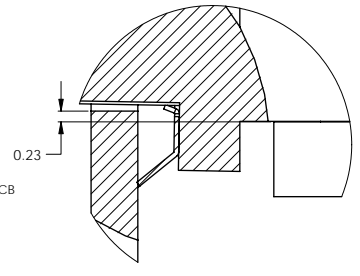
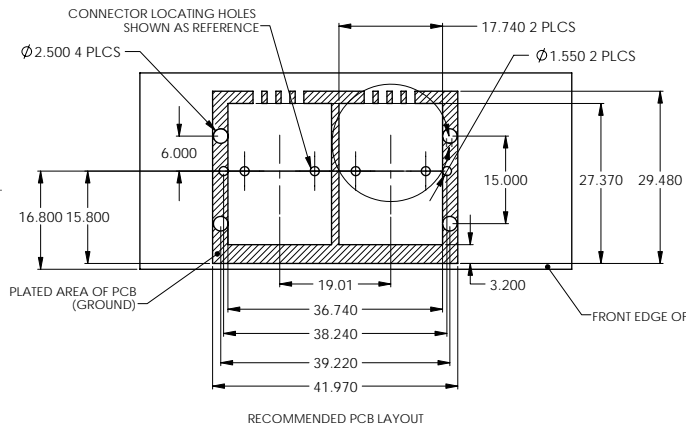
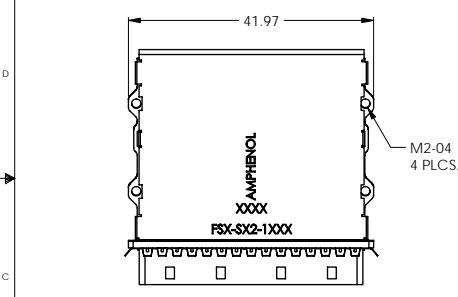
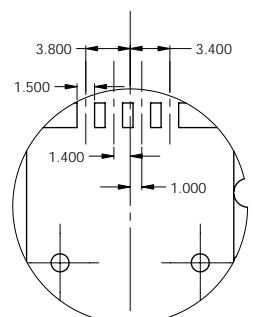
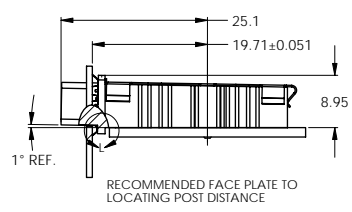
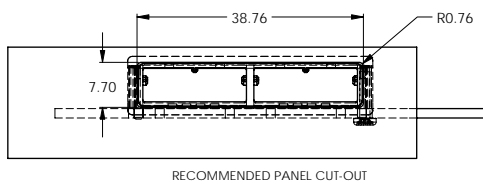
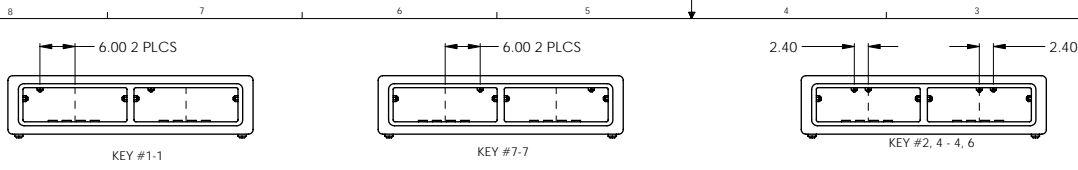
DO NOT SCALE DRAWING



THIS DOCUMENT CONTAINS PROPRIETARY INFORMATION AND SUCH INFORMATION MAY NOT BE DISCLOSED TO OTHERS FOR ANY PURPOSE OR USED FOR MANUFACTURING PURPOSES WITHOUT PERMISSION FROM AMPHENOL CANADA CORP.

UNLESS OTHERWISE SPECIFIED, DIMENSIONS ARE IN MILLIMETERS. TOLERANCES ARE:		APPROVALS	DATE	Amphenol Canada Corp.
DECIMALS	ANGLES	DESIGNED	NOV 7/08	
±.25	±.1°	CHECKED	NOV 7/08	
±.10		DRAWN		
±.05		DATE		
		BY		
		CHKD		
		APPD		
ENG. NO.	EAR 123XX	DATE		
CODE GEN. NO.	03554	REV.		
		REV. 1		
		REV. 2		
		REV. 3		
		REV. 4		
		REV. 5		
		REV. 6		
		REV. 7		
		REV. 8		
		REV. 9		
		REV. 10		

REVISIONS				
REV.	DATE	DESCRIPTION	BY	APPROVED
1		SEE SHEET 1	ZLJ	
2		SEE SHEET 1	ZLJ	
3		SEE SHEET 1	ZLJ	



- NOTES:
- 1) MATERIAL:
CAGE: ZINC DIECAST SHELL WITH 150 MICRONCHES OF NICKEL PLATING
EMC GASKET: SEE SHEET 1
COVER: STAINLESS STEEL
MOUNTING SCREW: AISI 1010 STEEL
 - 2) ROHS COMPLIANT



DO NOT SCALE DRAWING

THIS DOCUMENT CONTAINS PROPRIETARY INFORMATION AND SUCH INFORMATION MAY NOT BE DISCLOSED TO OTHERS FOR ANY PURPOSE OR USED FOR MANUFACTURING PURPOSES WITHOUT PERMISSION FROM AMPHENOL CANADA CORP.

UNLESS OTHERWISE SPECIFIED: DIMENSIONS ARE IN MILLIMETERS TOLERANCES ARE:		APPROVALS	DATE	Amphenol Canada Corp.	
DECIMAL	±0.25	DESIGNED	ZLJ	SEP-19/08	MINI SAS 1 DEGREE 2 PORT CAGE
XX	±0.10	CHECKED	ZLJ	SEP-19/08	
XXX	±0.05	DRAWN			
EXTERNAL AND FINISH		ASSEMBLED			
ENG. NO.	EAR 123XX	DATE			REV. T
CODE GEN. NO.	03554	ENG. APPR.			REV. SF