

REVISIONS			
REV	DATE	DESCRIPTION	BY
1		ELASTOMERIC GASKET OPTION ADDED	ZLJ
2		FOAM GASKET ADDED	ZLJ

FS1-S01-1XXX

MOUNTING SCREW OPTION

- 1 = 8 mm MOUNTING SCREW SHIPPED BULK IN SAME TRAYS WITH CAGE ASSEMBLIES
- 2 = NO MOUNTING SCREW SUPPLIED
- 3 = 10 mm MOUNTING SCREW WITH LOCK WASHER SHIPPED BULK IN SAME TRAYS WITH CAGE ASSEMBLIES

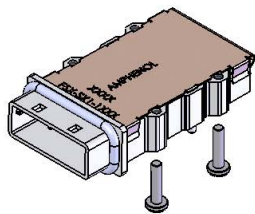
GASKET OPTION

- F = STAINLESS STEEL EMI GASKET
- E = FOAM, CHOMERICS SOFT SHIELD 4800, EMI GASKET
- C = CONDUCTIVE ELASTOMER, CHOMERICS S6305

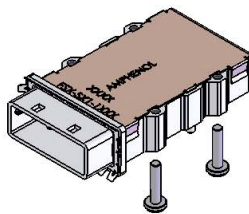
KEYING OPTION (SEE BELOW TABLE FOR FURTHER CLARIFICATION)

- 0 = NO KEY
- 1 = KEY #1
- 2 = KEY #2
- 4 = KEY #4
- 5 = KEY #5
- 6 = KEY #6
- 7 = KEY #7
- 2,4 = KEY #2 AND #4
- 4,6 = KEY #4 AND #6

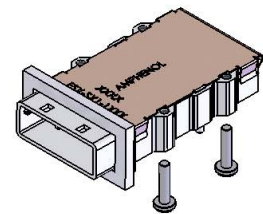
0	FS1-S01-10XX	No Key
1	FS1-S01-11XX	SATA 'X' Cable
2	FS1-S01-12XX	
4	FS1-S01-14XX	SAS Universal Port
5	FS1-S01-15XX	
6	FS1-S01-16XX	
7	FS1-S01-17XX	SATA 'M' Cable
2,4	FS1-S01-124X	SAS Out Port
4,6	FS1-S01-146XX	SAS In Port



PART NUMBER: **FS1-S01-14C1** SHOWN
(CAGE ASSEMBLY WITH ELASTOMERIC GASKET AND 8mm MOUNTING SCREWS SHIPPED BULK)



PART NUMBER: **FS1-S01-14E1** SHOWN
(CAGE ASSEMBLY WITH STAINLESS STEEL GASKET AND 8mm MOUNTING SCREWS SHIPPED BULK)



PART NUMBER: **FS1-S01-14F1** SHOWN
(CAGE ASSEMBLY WITH FOAM GASKET AND 8mm MOUNTING SCREWS SHIPPED BULK)

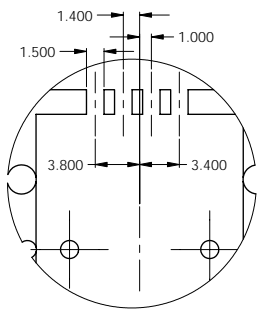
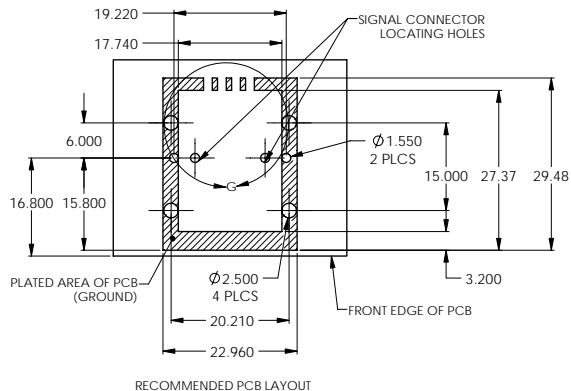
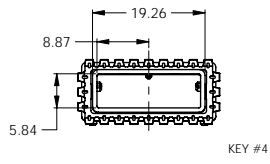
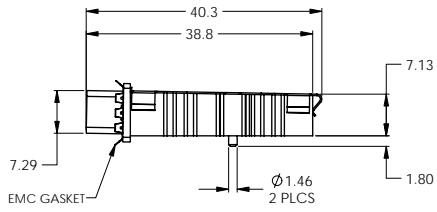
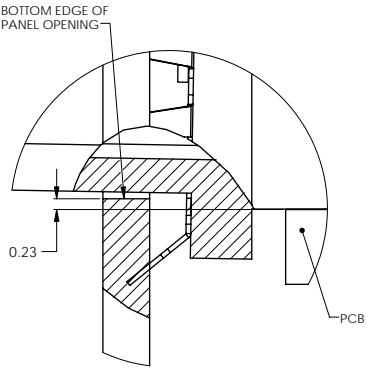
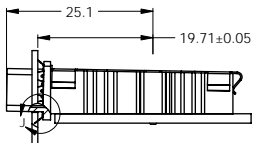
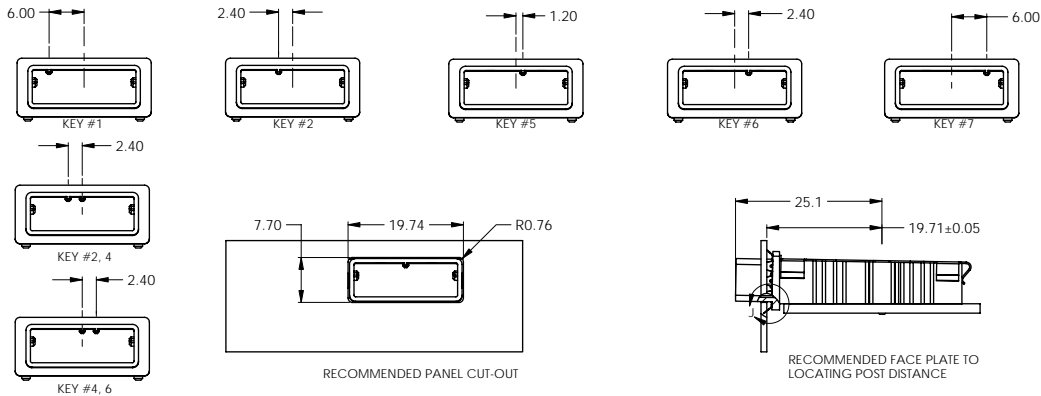


DO NOT SCALE DRAWING

THIS DOCUMENT CONTAINS PROPRIETARY INFORMATION AND SUCH INFORMATION MAY NOT BE DISCLOSED TO OTHERS FOR ANY PURPOSE OR USED FOR MANUFACTURING PURPOSES WITHOUT PERMISSION FROM AMPHENOL CANADA CORP.

UNLESS OTHERWISE SPECIFIED DIMENSIONS ARE IN MILLIMETERS TOLERANCES ARE:		APPROVALS	DATE	Amphenol Canada Corp.	
DECIMALS	ANGLES	DESIGNED	ZLJ	NOV 10/09	MINI SAS 1 DEGREE SINGLE PORT CAGE
XX ± 0.25	± 2°	CHECKED	ZLJ	NOV 10/09	
XX ± 0.10		DRAWN			P-FS1-S01-1XXX Z
XXX ± 0.05		DATE			
EXTERNAL AND FINISH		DATE			NTS
ENGR. NO.		DATE			
CODE GEN. NO.		03554			1 OF 2

REVISIONS			
REV.	DATE	DESCRIPTION	BY
1		SEE SHEET 1	ZLJ
2		SEE SHEET 1	ZLJ



NOTES:
 1) MATERIAL:
 MAIN CAGE: ZINC DIECAST SHELL WITH 150 MICROINCHES OF NICKEL PLATING
 EMC GASKET: SEE SHEET 1
 COVER: STAINLESS STEEL
 MOUNTING SCREW: AISI 1010 STEEL
 2) ROHS COMPLIANT



UNLESS OTHERWISE SPECIFIED DIMENSIONS ARE IN MILLIMETERS TOLERANCES ARE:	APPROVALS	DATE	Amphenol Canada Corp.
XXXX ± 0.25	DESIGNED: ZLJ	NOV 10/09	
XX ± 0.10	CHECKED: ZLJ	NOV 10/09	MINI SAS 1 DEGREE SINGLE PORT CAGE
XXX ± 0.05	DATE:		
EXTERNAL AND FINISH:	DATE:		
ENG. DES. NO. EAR 123XX	DATE:		
CODE GEN. NO. 03554	DATE:		
	DATE:		
	DATE:		

DO NOT SCALE DRAWING

THIS DOCUMENT CONTAINS PROPRIETARY INFORMATION AND SUCH INFORMATION MAY NOT BE DISCLOSED TO OTHERS FOR ANY PURPOSE OR USED FOR MANUFACTURING PURPOSES WITHOUT PERMISSION FROM AMPHENOL CANADA CORP.

A

Z

2 OF 2