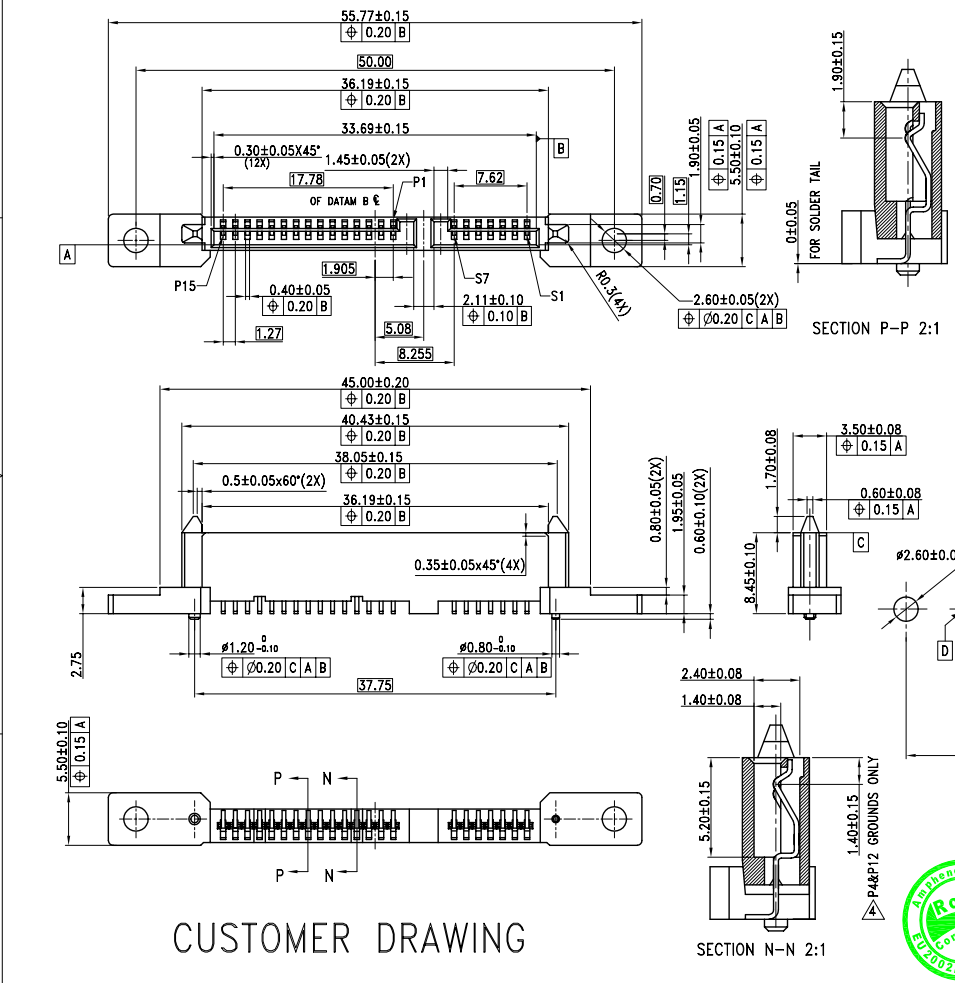
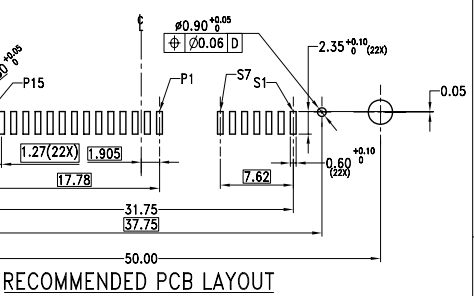


This document is the property of Amphenol Corporation and is delivered on the express condition that it is not to be disclosed, reproduced or used, in whole or in part, for dissemination or sale by anyone other than Amphenol Corporation, without the prior consent. A limit on right is granted in disclosure or to use any information in this document.



REVISIONS				
SYM	ECN	DESCRIPTION	DATE	APPROVED
A3	HKXXXX	INITIALLY RELEASE	9/30/04	IP
A3	HKXXXX	shift the riveted hole	12/14/04	IP
A4	HKXXXX	ADD THE STEP THICKNESS	7/24/05	IP
A5	HKXXXX	ADD THE STEP THICKNESS IN STEP ADD THE STEP THICKNESS IN STEP	10/14/05	IP

NOTES:  
 1. Material HOUSING :THERMOPLASTIC, UL94V-0  
 COLOR:BLACK  
 CONTACT: PHOSPHOR BRONZE  
 PLATING: UNDER PLATING WITH NICKEL 1.27µ MIN.  
 OVER PLATING WITH GOLD ON MATING AREA  
 GOLD PLATING THICKNESS REFER TO P/N SYSTEM  
 PURE TIN 2.54µ MIN. PLATING ON TERMINAL  
 2. ELECTRICAL SPECIFICATION: MAXIMUM RATED CURRENT:1.5Amps@30°C MAX.  
 CONTACT RESISTANCE:30 MILLIOHMS MAX.  
 INSULATOR RESISTANCE:1000MEGOHMA MIN.  
 DIELECTRIC WITHSTANDING VOLTAGE: 500 V AC  
 3. MATERIAL SHOULD BE FULFILLED AMPHENOL SPEC# S5N001.  
 ⚠️ PREMATING AT P4 & P12  
 5. ORDER P/N SYSTEM: SATA-101-0115-X  
 MATING AREA PLATING  
 1-Au 0.76µm MIN.  
 2-Au 0.38µm MIN.  
 A-Au FLASH 3µ'



ITEM NO	PART OR IDENTIFICATION NO	MANUFACTURE OR DESCRIPTION	QTY REQ'D
PARTS LIST			
UNLESS OTHERWISE SPECIFIED		APPROVAL	DATE
TOLERANCES:		DRAWN	7/24/05
U.S. METRIC		CHECKED	7/24/05
±0.25 FRACTIONS ±/−		DRAWING FILE:	
ANGLES ±°		TITLE	
SEE NOTES		SATA 7+15P SMT RECEPTACLE	
REMOVE SHARP EDGES		SCALE	
DIMENSIONS		NONE	
U.S. DIMENSIONS (MM)		SHEET 1 OF 1	



CUSTOMER DRAWING