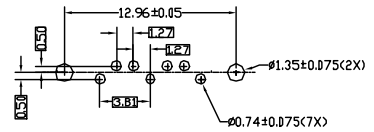
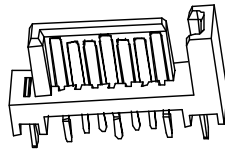
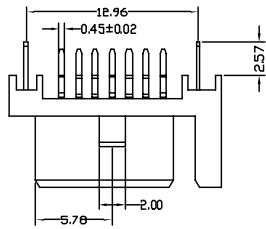


This document is the property of Amphenol Corporation and is delivered to the customer for their use only. It is not to be reproduced or distributed in any form or by any means, electronic or mechanical, including photocopying, recording, or by any information storage and retrieval system, without the prior written permission of Amphenol Corporation. All rights are reserved in this document.

REVISIONS				
SYM	CON	DESCRIPTION	DATE	APPROVED
A	H0000X	INITIAL RELEASE	4/15/05	Micheal IP



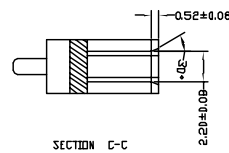
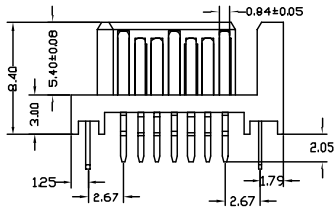
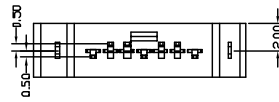
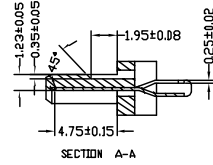
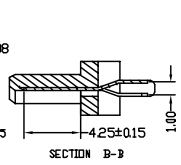
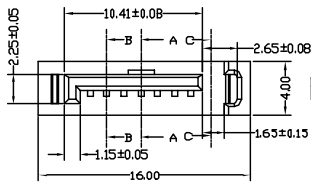
RECOMMENDED PCB LAYOUT
(PCB THICKNESS 1.6mm OR 2.0mm)

NOTE:

- MATERIAL:**
HOUSING: FR-6145, UL 94 V-0, BLACK;
CONTACTS: COPPER ALLOY T=0.25mm;
CONTACT FINISHED: 1.27-2.54um, NICKEL UNDER PLATED ON ENTIRE CONTACT;
SEE NOTES 4 FOR GOLD PLATING ON MATING AREA;
2.54-5.08um MATTE TIN PLATED ON TAIL AREA;
SOLDER TAB: BRASS, t=0.25;
SOLDER TAB FINISHED: 2.54-5.05um TIN OVER 1.27um MIN. NICKEL;
- SPECIFICATIONS:**
RATED CURRENT: SIGNAL PIN 1.5A MIN
POWER PIN 1.5A MIN
DIELECTRIC STRENGTH: 1000V FOR 1 MINUTE
INSULATION RESISTANCE: 1x10⁵ MΩ
TEMPERATURE: -40°C TO +105°C
CONTACT RESISTANCE: 30mΩ MAX
PIN RETENTION FORCE: 10N MIN. TOTAL (2.25 LB)
- PACKAGE: PACKING WITH TRAY.**
- ORDERING INFORMATION:**

SATA - 011 - 2017 - X

GOLD PLATING ON MATING AREA:
1: 0.76 um MIN.
2: 0.38 um MIN.
3: GOLD FLASH



Customer Drawing

UNLESS OTHERWISE SPECIFIED		APPROVAL	DATE
TOLERANCES		DRAWN: Tom/avg	4/15/05
U.S.		CHECKED: Micheal IP	4/15/05
METRIC		DRAWING FILE:	
X	±	\\amphenol\usa\csm\2011\01172005	
JUL	±	TITLE	
DEC	±	SATA 7 PINS	
FINISHES	±	SIZE: DRAWING NO.	
ANGLES	±	A3C SATA-011-2017-X	
TOP TERMINALS AND FINISHES		SCALE: NONE	
SEE NOTES		SHEET 1 OF 1	
REMOVE SHARP EDGES		REV. A	
DIMENSIONS		ANGLE OF PROJECTION	
U.S.		FIRST ANGLE	
METRIC		SECOND ANGLE	

Amphenol		
TITLE		
SATA 7 PINS		
SIZE: DRAWING NO.	REV. A	
A3C SATA-011-2017-X		
SCALE: NONE	SHEET 1 OF 1	