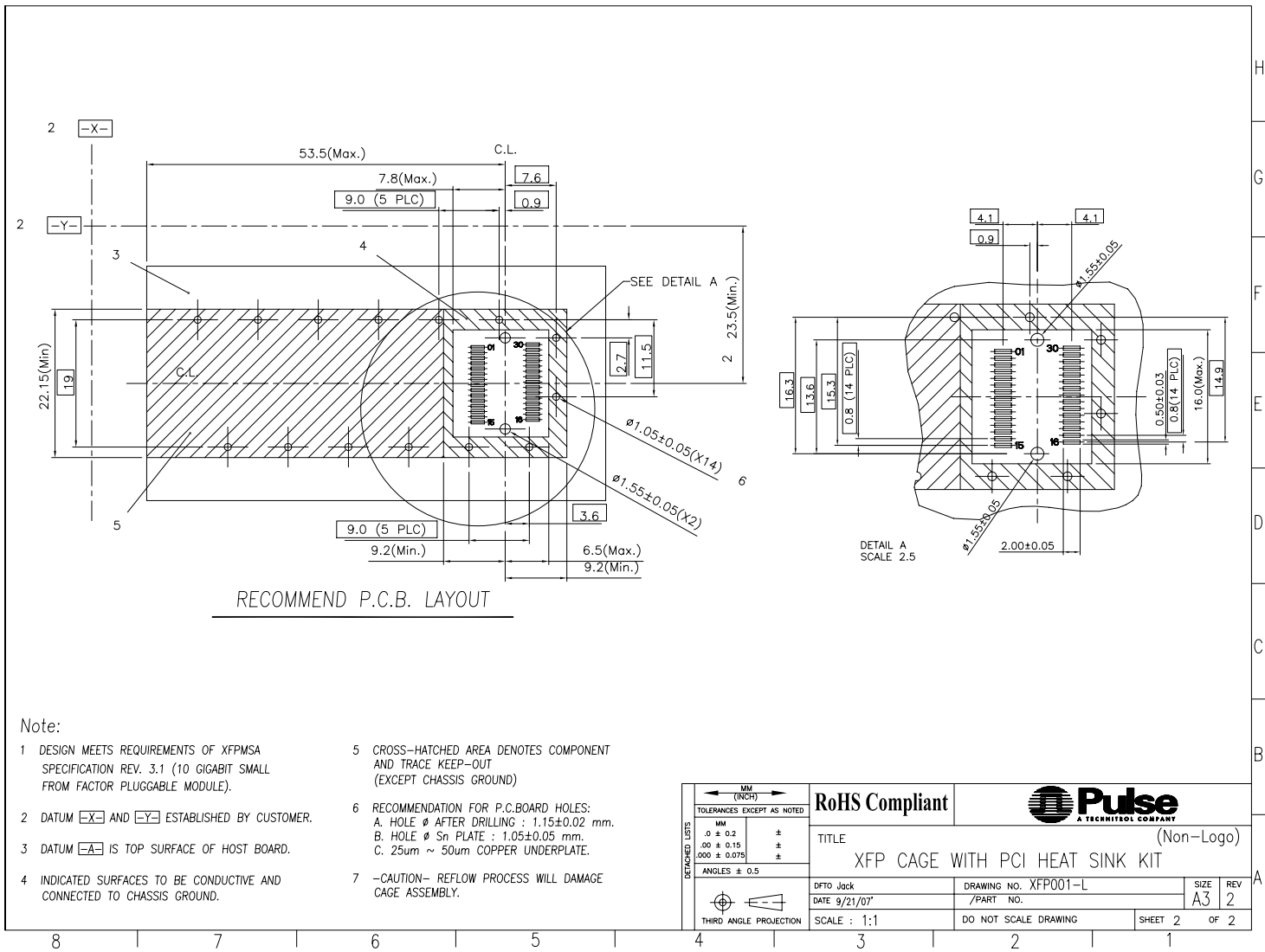


Q'ty/per	TRAY	CARTON			
		600			
PART NUMBER: XFP001-L					
No.	DESCRIPTION	Q'ty	MATERIAL	PLATING	REMARK
01	XFP CAGE ASSEMBLY (Non-Logo)	1			
02	XFP HEAT SINK (1.7mm)	1	AL	Ni	
03	XFP HEAT SINK CLIP	1	SUS		

MM (INCH) TOLERANCES EXCEPT AS NOTED .0 ± 0.2 ± .00 ± 0.15 ± .000 ± 0.075 ± ANGLES ± 0.5 DETACHED LISTS THIRD ANGLE PROJECTION	RoHS Compliant	 A TECHNITROL COMPANY
	TITLE: XFP CAGE WITH PCI HEAT SINK KIT (Non-Logo)	
DFTO Jack DATE 9/21/07 SCALE : 1:1	DRAWING NO. XFP001-L /PART NO.	SIZE A3 REV 2 DO NOT SCALE DRAWING SHEET 1 OF 2

8 | 7 | 6 | 5 | 4 | 3 | 2 | 1

H
G
F
E
D
C
B
A



RECOMMEND P.C.B. LAYOUT

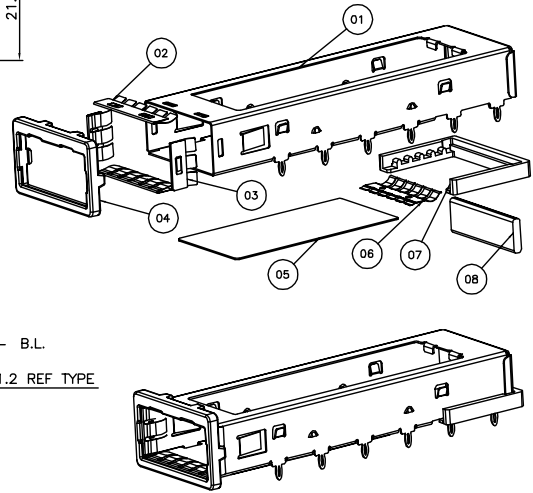
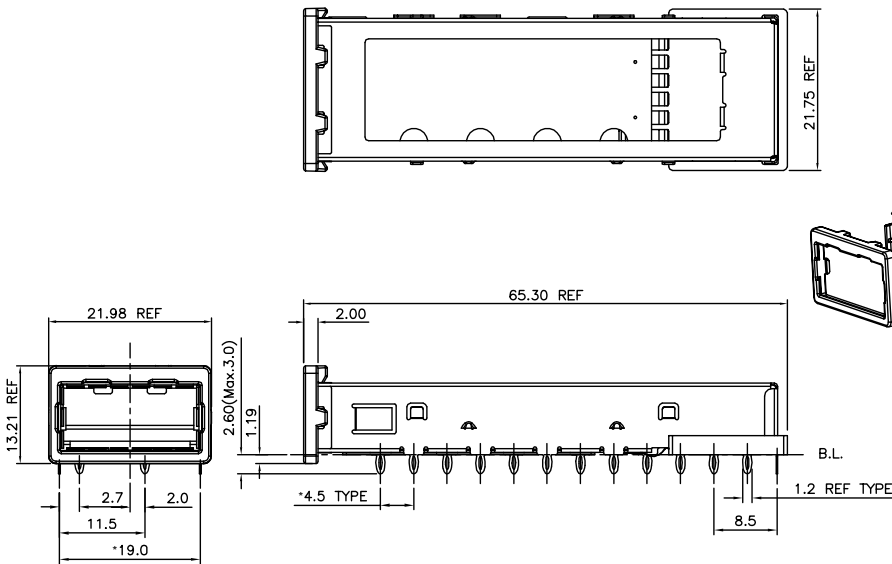
Note:

- | | |
|--|--|
| <p>1 DESIGN MEETS REQUIREMENTS OF XFPMSA SPECIFICATION REV. 3.1 (10 GIGABIT SMALL FROM FACTOR PLUGGABLE MODULE).</p> <p>2 DATUM $\square X$ AND $\square Y$ ESTABLISHED BY CUSTOMER.</p> <p>3 DATUM $\square A$ IS TOP SURFACE OF HOST BOARD.</p> <p>4 INDICATED SURFACES TO BE CONDUCTIVE AND CONNECTED TO CHASSIS GROUND.</p> | <p>5 CROSS-HATCHED AREA DENOTES COMPONENT AND TRACE KEEP-OUT (EXCEPT CHASSIS GROUND)</p> <p>6 RECOMMENDATION FOR P.C.B. BOARD HOLES:
 A. HOLE ϕ AFTER DRILLING : 1.15 ± 0.02 mm.
 B. HOLE ϕ Sn PLATE : 1.05 ± 0.05 mm.
 C. $25\mu\text{m} \sim 50\mu\text{m}$ COPPER UNDERPLATE.</p> <p>7 -CAUTION- REFLOW PROCESS WILL DAMAGE CAGE ASSEMBLY.</p> |
|--|--|

<table border="1"> <tr> <th colspan="2">MM (INCH)</th> </tr> <tr> <td colspan="2">TOLERANCES EXCEPT AS NOTED</td> </tr> <tr> <td>MM</td> <td>±</td> </tr> <tr> <td>.0 ± 0.2</td> <td>±</td> </tr> <tr> <td>.00 ± 0.15</td> <td>±</td> </tr> <tr> <td>.000 ± 0.075</td> <td>±</td> </tr> <tr> <td colspan="2">ANGLES ± 0.5</td> </tr> <tr> <td colspan="2">THIRD ANGLE PROJECTION</td> </tr> </table>	MM (INCH)		TOLERANCES EXCEPT AS NOTED		MM	±	.0 ± 0.2	±	.00 ± 0.15	±	.000 ± 0.075	±	ANGLES ± 0.5		THIRD ANGLE PROJECTION		<p>RoHS Compliant</p>	
	MM (INCH)																	
TOLERANCES EXCEPT AS NOTED																		
MM	±																	
.0 ± 0.2	±																	
.00 ± 0.15	±																	
.000 ± 0.075	±																	
ANGLES ± 0.5																		
THIRD ANGLE PROJECTION																		
<p>TITLE XFP CAGE WITH PCI HEAT SINK KIT (Non-Logo)</p>																		
<p>DFTO Jack</p> <p>DATE 9/21/07</p> <p>SCALE : 1:1</p>	<p>DRAWING NO. XFP001-L</p> <p>/PART NO.</p> <p>DO NOT SCALE DRAWING</p>	<p>SIZE A3</p> <p>REV 2</p> <p>SHEET 2 OF 2</p>																

8 | 7 | 6 | 5 | 4 | 3 | 2 | 1

H
G
F
F
D
C
B
A

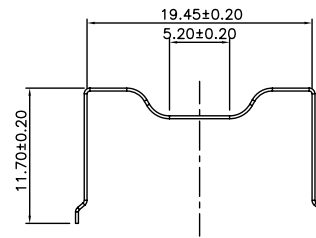
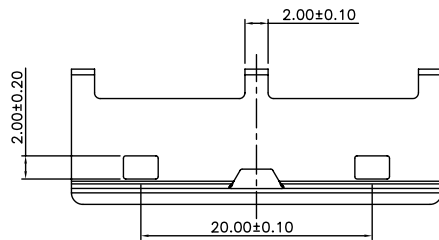
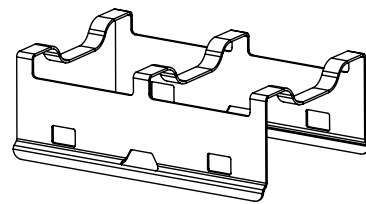
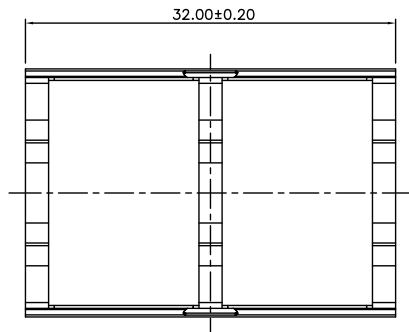


Q'ty	TRAY	CARTON		
		600		
PART NUMBER: XFPCAGE001-L				
No.	DESCRIPTION	Q'ty	MATERIAL	PLATING
01	CAGE HOUSING	1	COPPER ALLOY	
02	FRONT EMI GASKET/UD	2	COPPER ALLOY	Sn
03	FRONT EMI GASKET/RL	2	COPPER ALLOY	Sn
04	FRONT FLANGE	1	ZINC ALLOY	Ni
05	MYLAR	1		
06	INTERMEDIATE REAR EMI GASKET	1	COPPER ALLOY	Sn
07	LOWER REAR EMI GASKET	1	EMI RUBBER	
08	UPPER REAR EMI GASKET	1	EMI PORON	

DETAILED LIST TOLERANCES EXCEPT AS NOTED MM (INCH) .0 ± 0.2 .20 ± 0.15 .000 ± 0.075 ANGLES ± 0.5 THIRD ANGLE PROJECTION	RoHS Compliant		TITLE XFP CAGE	(Non-Logo)
	DFTO Jack DATE 4/03/07 SCALE : 1:1		DRAWING NO. XFPCAGE001-L /PART NO.	SIZE A3
DO NOT SCALE DRAWING			SHEET 1	OF 1

8 | 7 | 6 | 5 | 4 | 3 | 2 | 1

H
G
F
E
D
C
B
A

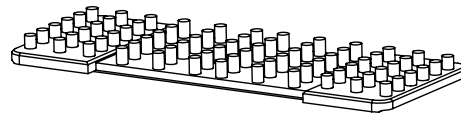
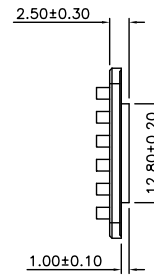
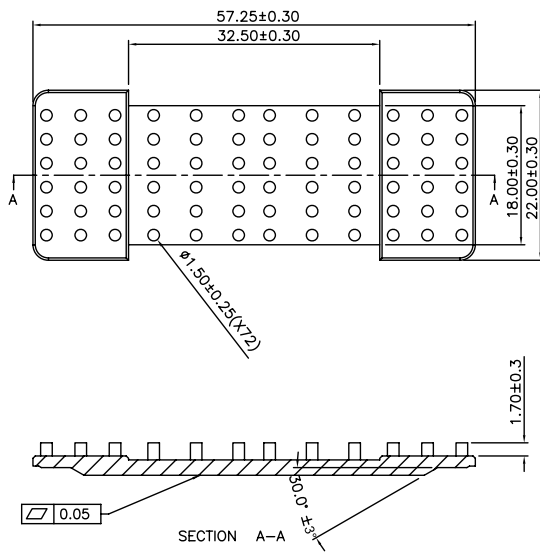


Q'ty	TRAY	CARTON		
		600		
PART NUMBER: XFPCP001-L				
No.	DESCRIPTION	Q'ty	MATERIAL	PLATING
01	CLIP	1	SUS	

DETACHED LISTS TOLERANCES EXCEPT AS NOTED MM .0 ± 0.2 ± .50 ± 0.15 ± .000 ± 0.075 ± ANGLES ± 0.5 THIRD ANGLE PROJECTION	RoHS Compliant		
	TITLE	(Non-Logo)	
	XFP CLIP		
	DATE 4/03/07	DRAWING NO. XFPCP001-L	SIZE A3
SCALE : 1:1	DO NOT SCALE DRAWING	SHEET 1	OF 1

8 | 7 | 6 | 5 | 4 | 3 | 2 | 1

H
G
F
E
D
C
B
A



Q'ty	TRAY	CARTON		
		600		
PART NUMBER: XFPHS0170-L				
No.	DESCRIPTION	Q'ty	MATERIAL	PLATING
01	HEAT SINK L=1.7mm	1	Al	Ni

DETACHED LISTS THIRD ANGLE PROJECTION	TOLERANCES EXCEPT AS NOTED MM .0 ± 0.2 .00 ± 0.15 .000 ± 0.075	RoHS Compliant	
	ANGLES ± 0.5	TITLE XFP HEAT SINK	(Non-Logo)
DFTO Jack DATE 4/03/07	DRAWING NO. XFPHS0170-L /PART NO.	SIZE A3	REV 1
SCALE : 1:1	DO NOT SCALE DRAWING	SHEET 1	OF 1

8 | 7 | 6 | 5 | 4 | 3 | 2 | 1

H
G
F
E
D
C
B
A