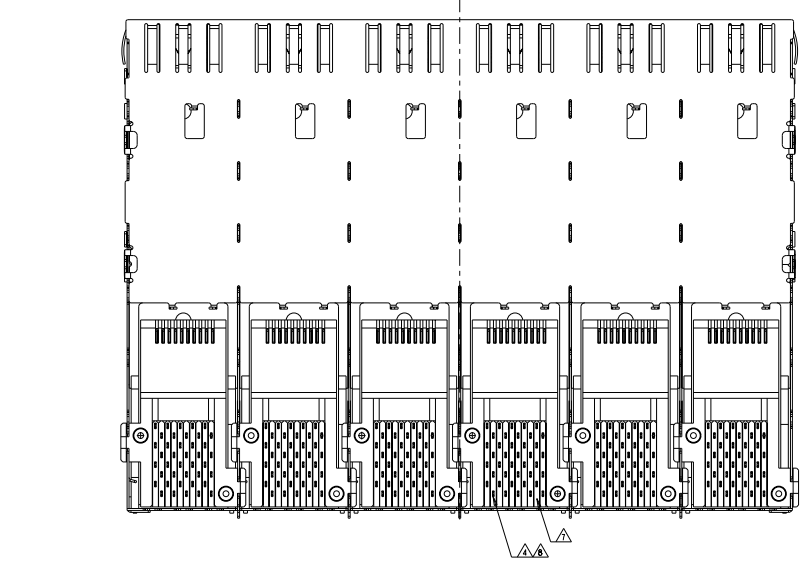
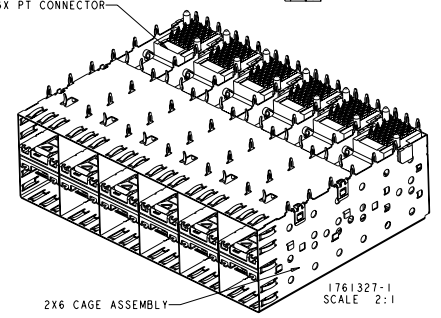
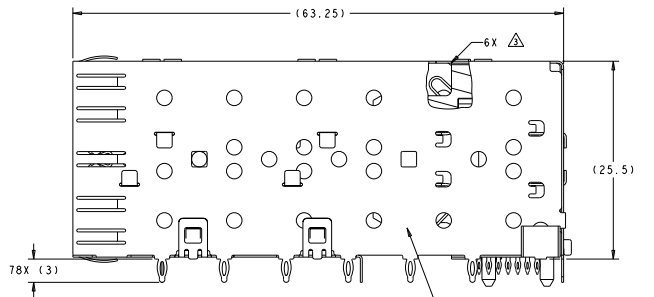
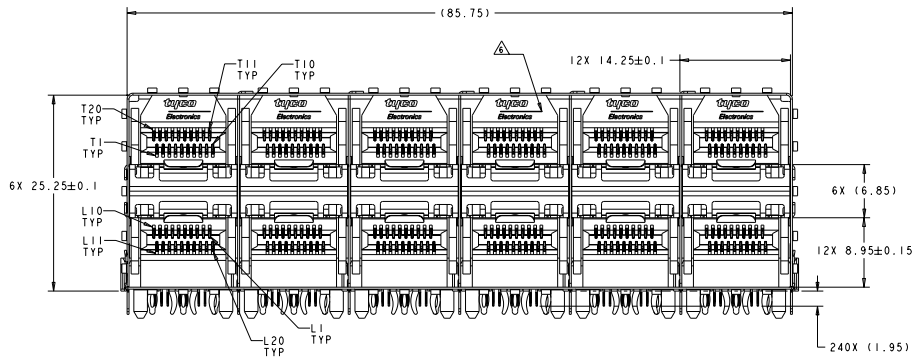


DATE: 2014.07.28
 DRAWING NO: 1761327-1
 BY: TYP
 CHECKED BY: TYP
 APPROVED BY: TYP

REV	DATE	DESCRIPTION	BY	CHK	APP
B1	2014.08.01	REVISED ECR-08-013764	ALUMBA	AZ	SY
C	2014.08.02	ECR-08-020454	YINDONG	AL	SY



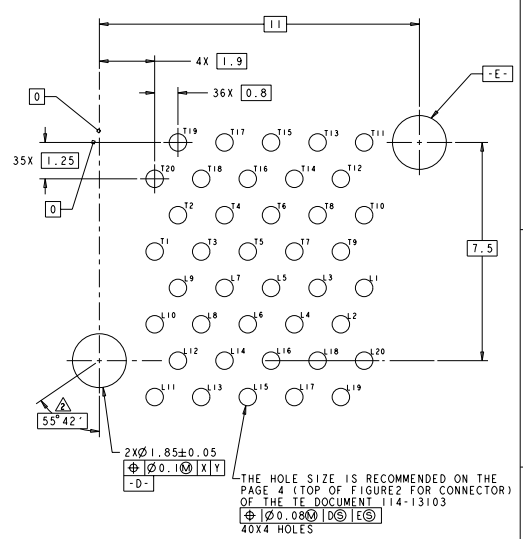
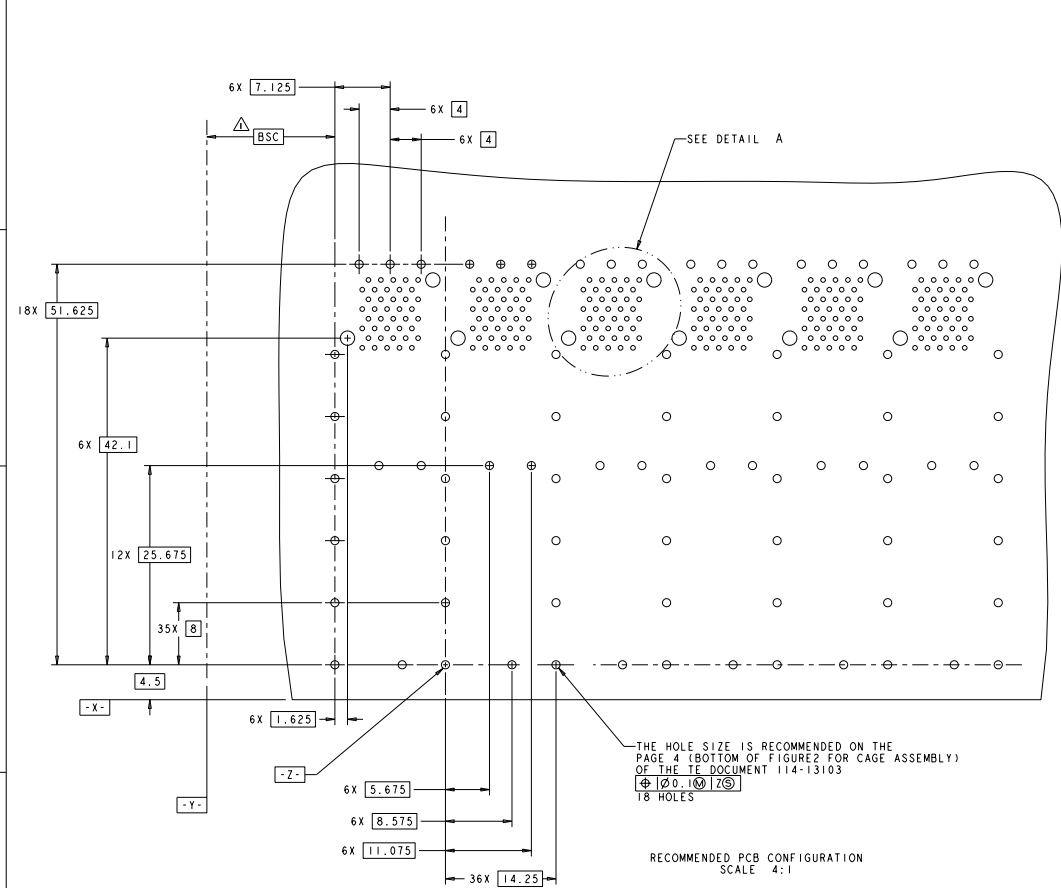
- △ DATUM AND BASIC DIMENSION TO BE DETERMINED BY CUSTOMER.
- △ INTERPRETATION OF DATUM REFERENCE FRAME IN ACCORDANCE WITH SECT 4.4.1.1 OF ASME Y14.5M-1994.
- △ TOP OF PT CONNECTOR TO BE 0-0.15 FROM INSIDE SURFACE OF CAGE.
- △ COPPER ALLOY.
- △ 1.25μM MIN TIN PER ASTM B 545 OVER NICKEL FLASH PER QQ-N-290. NON-PLATED EDGES PERMISSIBLE.
- △ LCP, HIGH TEMPERATURE, UL 94V-0 RATED, BLACK.
- △ POLYESTER, UL 94V-0 RATED, BLACK.
- △ CONTACT MATING AREA: SURFACE TREATMENT OVER 0.76μM MIN GOLD PER ASTM B 488 OVER 1.27μM MIN NICKEL PER QQ-N-290. NEEDLE EYE: 1.25μM MIN TIN PER ASTM B 545 OVER 1.27μM MIN NICKEL PER QQ-N-290.
- △ REMAINDER OF CONTACT: 0.76μM MIN NICKEL PER QQ-N-290.

1761327-1
 PART NUMBER

DATE: 2014.07.28	BY: TYP	CHECKED BY: TYP	APPROVED BY: TYP	DATE: 2014.07.28	BY: TYP	CHECKED BY: TYP	APPROVED BY: TYP
1761327-1	1761327-1	1761327-1	1761327-1	1761327-1	1761327-1	1761327-1	1761327-1
1761327-1	1761327-1	1761327-1	1761327-1	1761327-1	1761327-1	1761327-1	1761327-1
1761327-1	1761327-1	1761327-1	1761327-1	1761327-1	1761327-1	1761327-1	1761327-1

1761327-1

REV	DATE	REVISIONS
ES	00	SEE SHEET 1



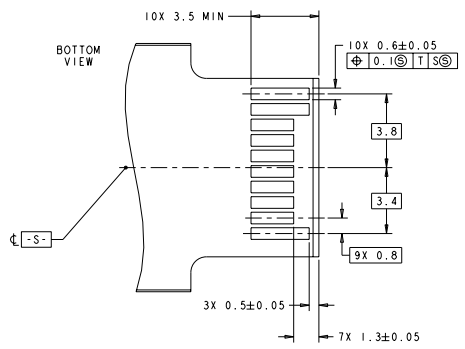
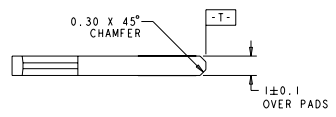
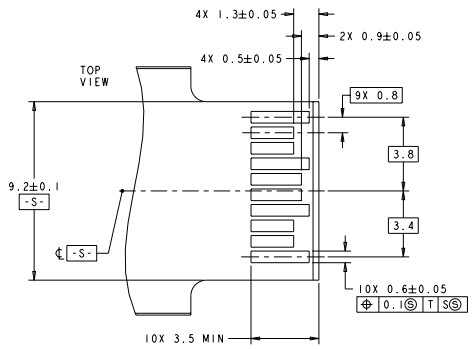
THE HOLE SIZE IS RECOMMENDED ON THE PAGE 4 (BOTTOM OF FIGURE 2 FOR CAGE ASSEMBLY) OF THE TE DOCUMENT 114-13103
 $\phi 0.10 \pm 0.0125$
 18 HOLES

RECOMMENDED PCB CONFIGURATION
 SCALE 4:1

DETAIL A
 SCALE 15:1

TYPE ELECTRONICS CORPORATION	TYPE ELECTRONICS CORPORATION	TYPE ELECTRONICS CORPORATION	TYPE ELECTRONICS CORPORATION
DATE: 114-13103-01	DATE: 114-13103-01	DATE: 114-13103-01	DATE: 114-13103-01
REV: 00	REV: 00	REV: 00	REV: 00
BY: TYPE ELECTRONICS CORPORATION	BY: TYPE ELECTRONICS CORPORATION	BY: TYPE ELECTRONICS CORPORATION	BY: TYPE ELECTRONICS CORPORATION
CAGE AND PT CONNECTOR ASSEMBLY	CAGE AND PT CONNECTOR ASSEMBLY	CAGE AND PT CONNECTOR ASSEMBLY	CAGE AND PT CONNECTOR ASSEMBLY
PRESS FIT, 2X6, STANDARD PROFILE	PRESS FIT, 2X6, STANDARD PROFILE	PRESS FIT, 2X6, STANDARD PROFILE	PRESS FIT, 2X6, STANDARD PROFILE
SEP	SEP	SEP	SEP
114-13103	114-13103	114-13103	114-13103
00778	00778	00778	00778
CUSTOMER DRAWING	CUSTOMER DRAWING	CUSTOMER DRAWING	CUSTOMER DRAWING
SHEET 1	SHEET 2	SHEET 3	SHEET 4

REV	DATE	DESCRIPTION	BY	CHK	APP
ES	00	SEE SHEET 1			



RECOMMENDED LAYOUT FOR
MATING TRANSCEIVER PCB
SCALE 10:1

SHEET NO. 00 OF 00		REVISED FOR FABRICATION		DATE: 00/00/00		DRAWN BY:		CHECKED BY:		APPROVED BY:			
TITLE: CAGE AND PT CONNECTOR ASSEMBLY PRESS FIT, 2X6, STANDARD PROFILE SFP				PART NO.: 00778 REV: A				DRAWING NO.: 116-13103		SHEET NO.: 3 OF 3		SCALE: 10:1	
CUSTOMER DRAWING													