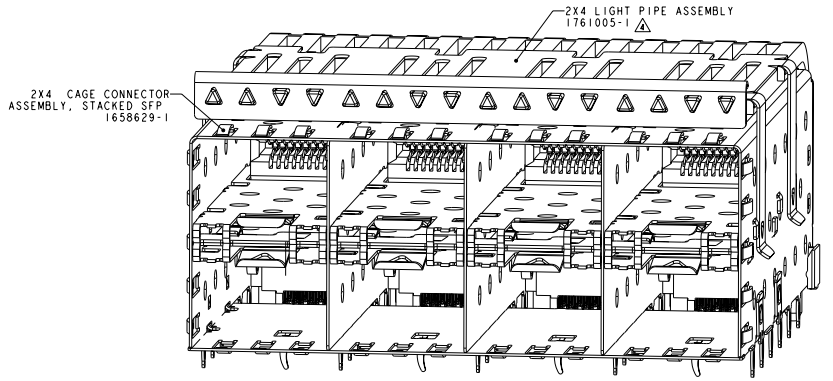
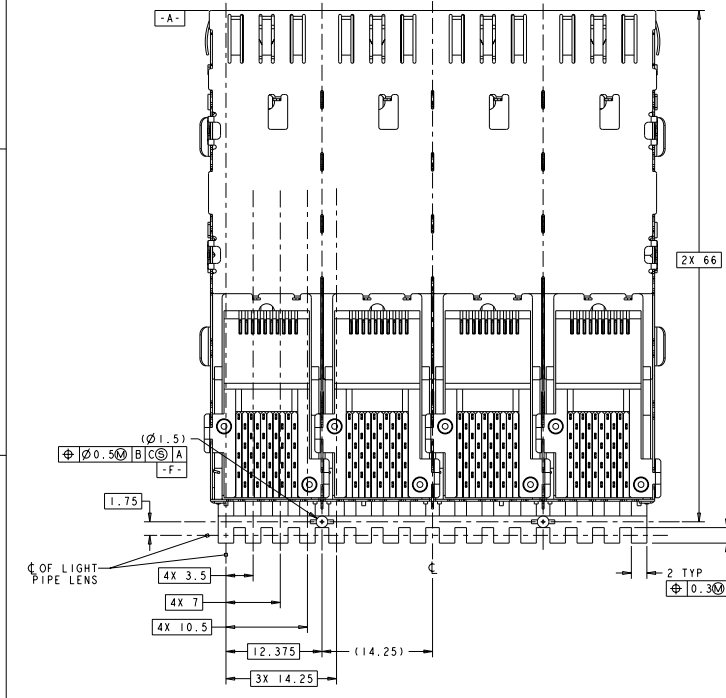
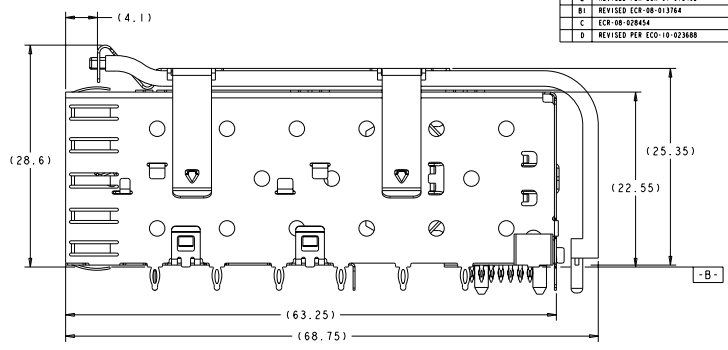
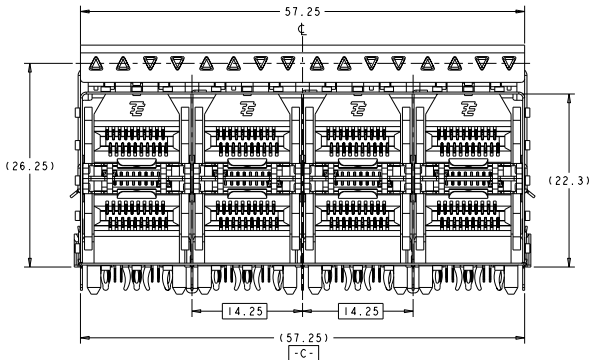


DATE: 06/20/2003 BY: PACE ELECTRONICS CORPORATION ALL RIGHTS RESERVED
 REVISIONS PER FABRICATION

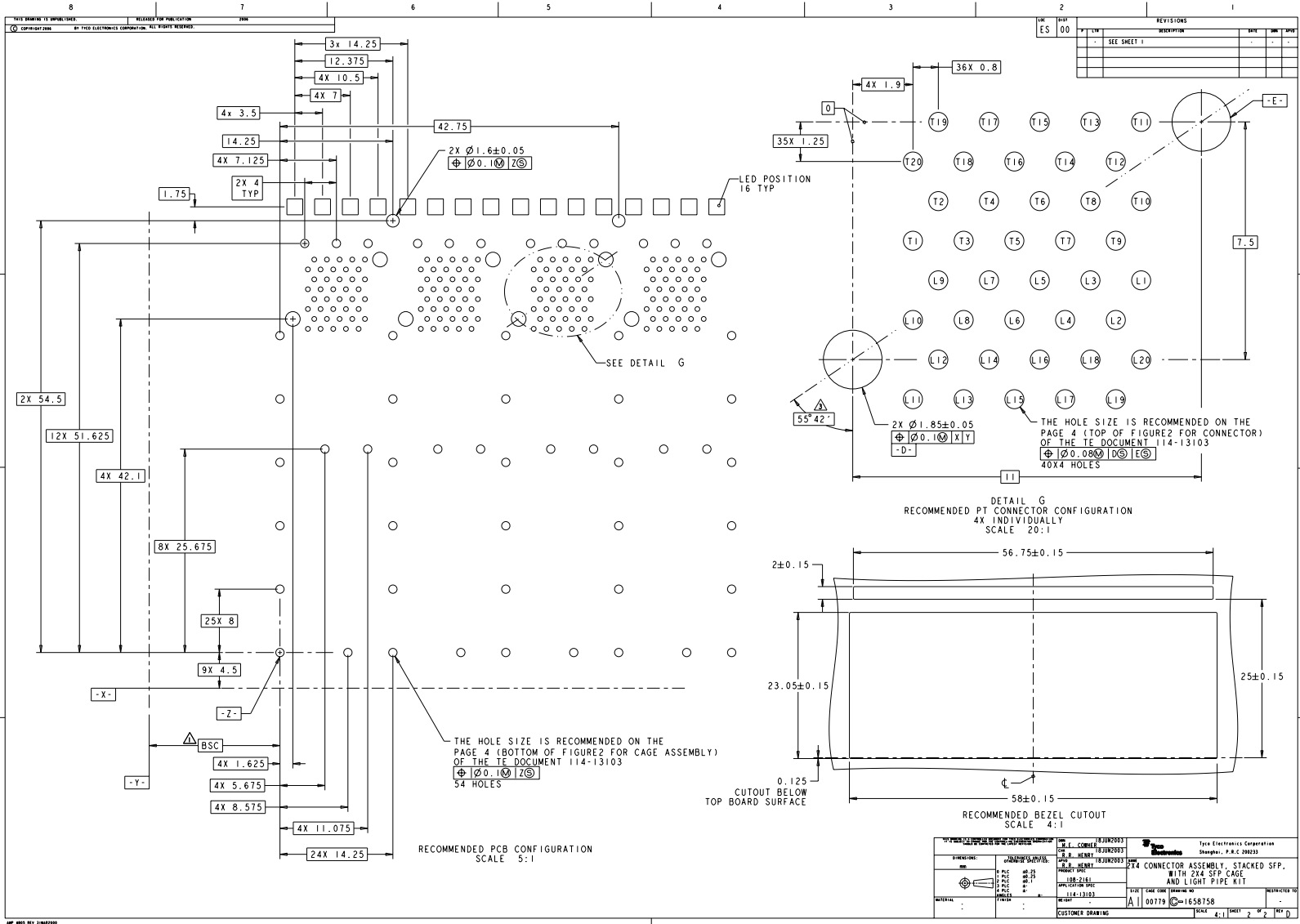
REV	DATE	DESCRIPTION	BY	CHK	APP
B	07-01-0402	REVISED PER ECR-07-010402	DMCCANN	SL	ST
B1	08-09-013764	REVISED ECR-08-013764	DMCCANN	AZ	ST
C	08-09-020424	ECR-08-020424	DMCCANN	AL	ST
D	10-02-03688	REVISED PER ECO-10-023688	DMCCANN	JT	CF



- △ DATUM AND BASIC DIMENSION TO BE DETERMINED BY CUSTOMER
 - △ DATUM C APPLIES OVER ENTIRE DIMENSION
 - △ INTERPRETATION OF DATUM REFERENCE FRAME IN ACCORDANCE WITH SECT 4.4.1.1 OF ASME Y14.5M-1994
 - △ LIGHT PIPE KIT SUPPLIED SEPARATELY, KIT TO BE ATTACHED AFTER SEATING OF 1658629-1 ON BOARD.
5. CONNECTOR ASSEMBLY CONSIST OF LIGHT PIPE ASSEMBLY AND CAGE/CONNECTOR ASSEMBLY, SUPPLIED UNASSEMBLED.
 6. LABEL ON CAGE ASSEMBLY WILL HAVE PART NUMBER 1658629-1.

1658758-1 PART NUMBER	
DATE: 06/20/2003 BY: J. L. COMBS CHECKED: J. R. HEARY DATE: 06/20/2003 PART: 1658758-1 PROJECT: 1658758-1 DRAWING NO: 114-13103 REV: A	Title Electronics Corporation Skaneateles, P. O. BOX 200233
2X4 CONNECTOR ASSEMBLY, STACKED SFP, WITH 2X4 SFP CAGE AND LIGHT PIPE KIT	DRAWN BY: J. L. COMBS CHECKED BY: J. R. HEARY DATE: 06/20/2003 PART: 1658758-1 PROJECT: 1658758-1 DRAWING NO: 114-13103 REV: A

NOTES: SEE REV 2/2003 FOR PREVIOUS EDITIONS
 PRE-ENGINEER DRAWING



DATE: 11/14/2003		REV: 00		DATE: 11/14/2003	
DESIGNED BY: J. L. COMBES		CHECKED BY: J. L. COMBES		DATE: 11/14/2003	
DRAWN BY: J. L. COMBES		APPROVED BY: J. L. COMBES		DATE: 11/14/2003	
PART NO: 165-2161		PART NO: 165-2161		DATE: 11/14/2003	
REV: 00		REV: 00		DATE: 11/14/2003	
MATERIAL: 114-13103		MATERIAL: 114-13103		DATE: 11/14/2003	
QUANTITY: 1		QUANTITY: 1		DATE: 11/14/2003	
CAGE CODE: 00778		CAGE CODE: 00778		DATE: 11/14/2003	
CUSTOMER DRAWING		CUSTOMER DRAWING		DATE: 11/14/2003	

24 CONNECTOR ASSEMBLY, STACKED SFP, WITH 24X SFP CAGE AND LIGHT PIPE KIT

Scale Code: 00778 ©-1658758

SHEET 2 OF 2