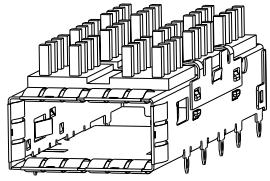
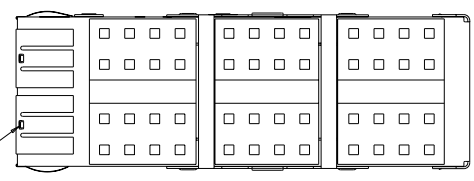


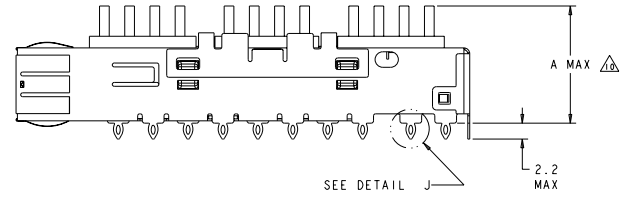
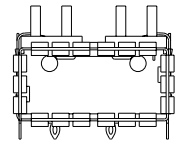
REV	DATE	DESCRIPTION	BY	CHK	APP
B		REV PER ECO-09-020440			



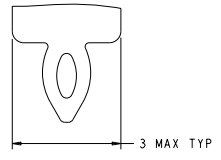
Sn42Bi58 SOLDER
6 PLACES



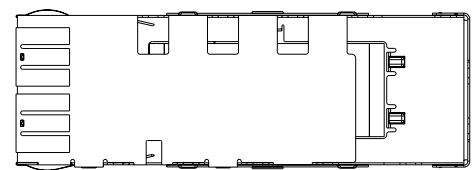
- ⚠ CAGE MATERIAL: NICKEL SILVER, 0.25 THICK
- ⚠ HEAT SINK MATERIAL: ALUMINUM
- ⚠ HEAT SINK CLIP MATERIAL: STAINLESS STEEL
- ⚠ EMI SPRINGS MATERIAL: COPPER ALLOY
- ⚠ MINIMUM PITCH DIMENSION.
- 3. MATES WITH QSFP MSA COMPATIBLE TRANSCEIVER.
- ⚠ REFERENCE APPLICATION SPEC 114-13217 FOR RECOMMENDED DRILL HOLE DIAMETER AND PLATING THICKNESS.
- ⚠ DATUMS AND BASIC DIMENSIONS ESTABLISHED BY CUSTOMER.
- 6. MINIMUM PC BOARD THICKNESS:
SINGLE SIDED = 1.45mm (shown, pg. 4)
DOUBLE SIDED = 2.2mm
- ⚠ HEATSINK AND CLIP SHIPPED ASSEMBLED TO CAGE ASSEMBLY. CAGE ASSEMBLY MAY BE PRESSED INTO THE PCB AS SHIPPED.
- ⚠ DATUM [-A-] IS TOP SURFACE OF HOST BOARD.
- ⚠ SURFACE TRACES PERMITTED WITHIN THIS AREA EXCEPT WHERE CAGE STANDOFFS, SHOWN IN DETAIL J, CONTACT PC BOARD.
- ⚠ DIMENSION APPLIES WITH MODULE INSTALLED IN THE CAGE.
- ⚠ DATE CODE (YYWW) MARKED ON TOP OF CAGE AND CONCEALED BY HEAT SINK APPLIES TO CAGE ASSEMBLY ONLY.
- ⚠ SPRING FINISH: 0.8µm MIN TIN OVER 0.8µm MIN NICKEL. NON-PLATED EDGES PERMISSIBLE.
- ⚠ HEAT SINK FINISH: 0.076 µm MIN NICKEL.
- 13. PRODUCT HAS NOT COMPLETED QUALIFICATION TESTING.



SEE DETAIL J



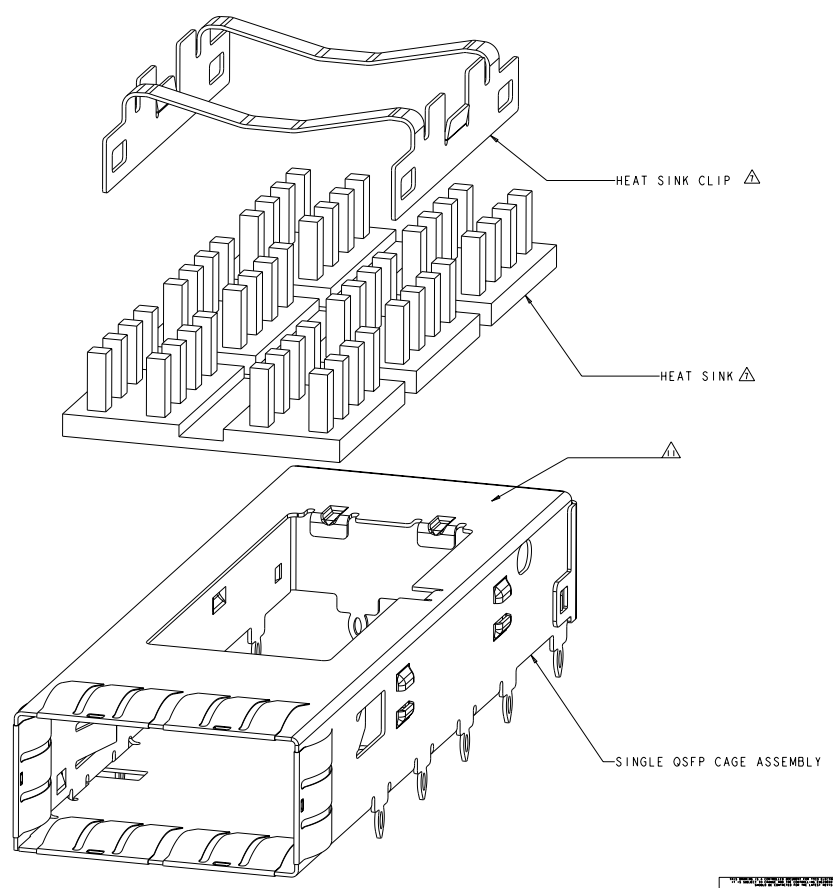
DETAIL J
SCALE 20:1



23.0 NETWORKING HEAT SINK	1888631-3
16.0 SAN HEAT SINK (SHOWN)	1888631-2
13.7 PCI HEAT SINK	1888631-1
A DESCRIPTION	PART NUMBER

DATE: 09/20/16 TIME: 10:00 AM DRAWN: [Signature] CHECKED: [Signature] APPROVED: [Signature]	DATE: 09/20/16 TIME: 10:00 AM DRAWN: [Signature] CHECKED: [Signature] APPROVED: [Signature]	DATE: 09/20/16 TIME: 10:00 AM DRAWN: [Signature] CHECKED: [Signature] APPROVED: [Signature]	DATE: 09/20/16 TIME: 10:00 AM DRAWN: [Signature] CHECKED: [Signature] APPROVED: [Signature]
TITLE: CAGE ASSEMBLY, THRU BEZEL, OSFP, WITH HEAT SINK PART NUMBER: 188-2286 SPECIFICATION: 114-13217 CUSTOMER: A 00779 © 1888631		DATE CODE: 1609 DRAWING NO: 188-2286 SHEET: 1 OF 4 TOTAL SHEETS: 4	

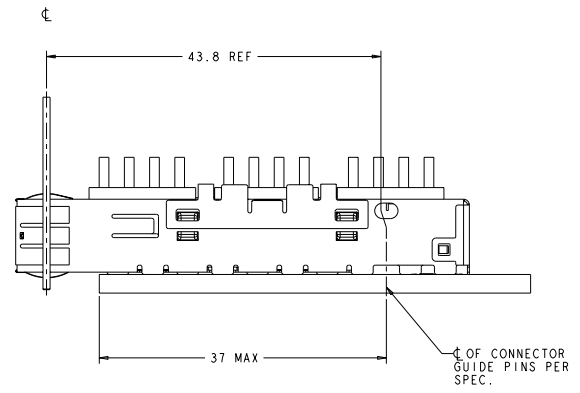
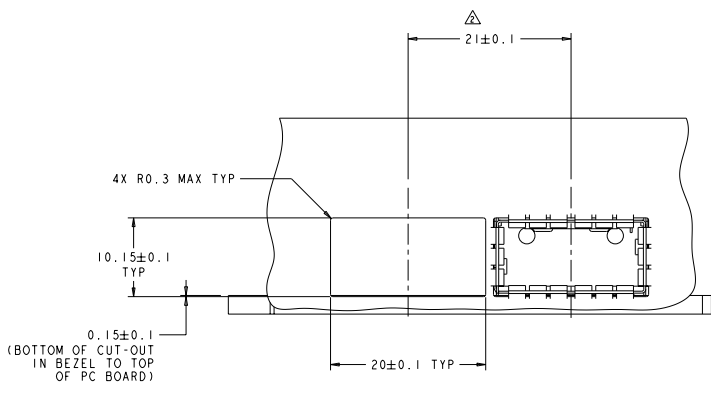
REVISOR		REVISIONS	
NO.	DATE	DESCRIPTION	BY
GP	00	SEE SHEET 1	



EXPLODED ASSEMBLY
SCALE 8:1

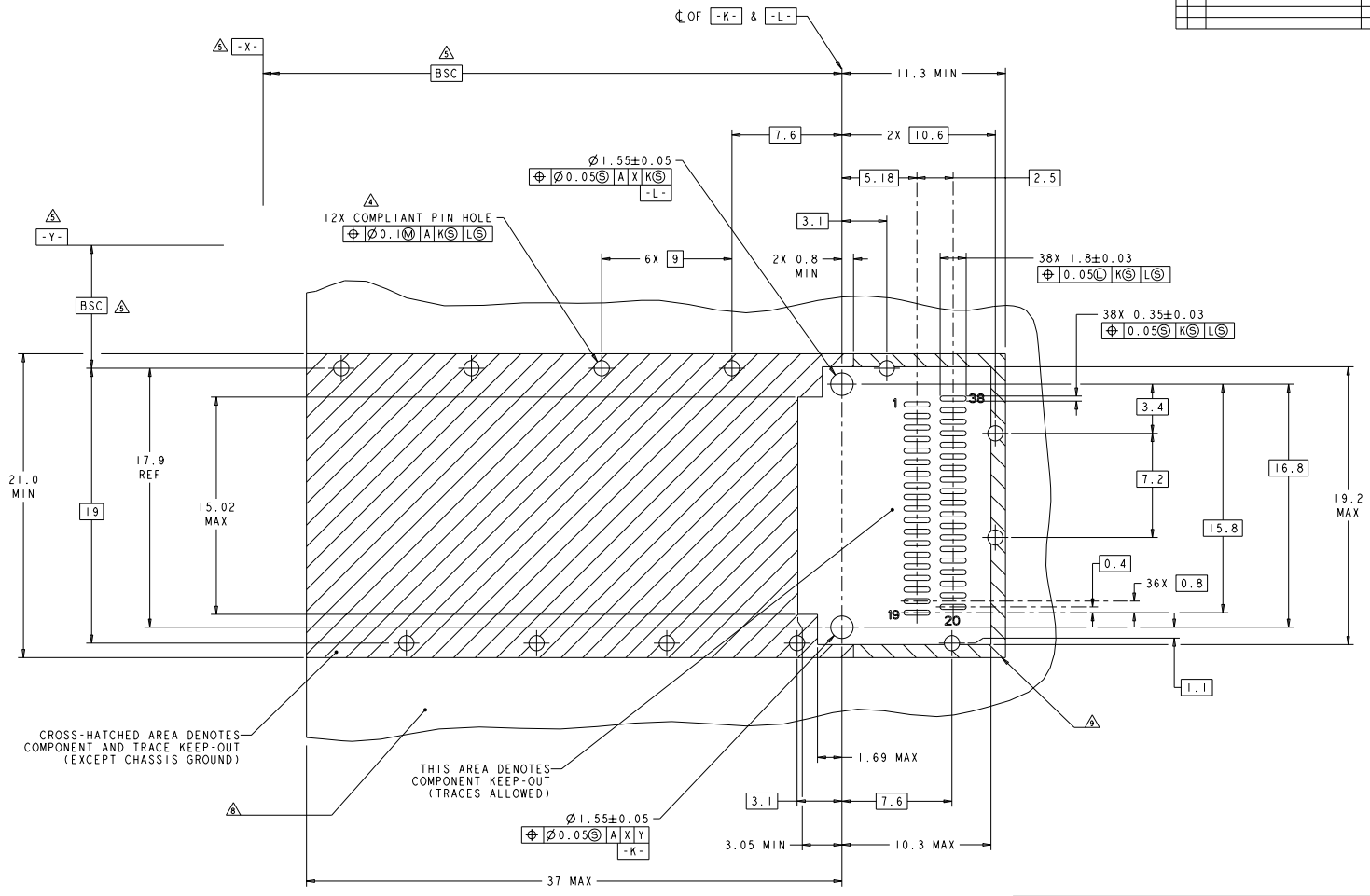
TITLE: SINGLE QSFP CAGE ASSEMBLY WITH HEAT SINK PART NO.: 188-2286 DATE: 01/13/07 DRAWN BY: J. BRIGHT CHECKED BY: J. BRIGHT APPROVED BY: J. BRIGHT		QTY: 1 UNIT: 188-2286 SPECIFICATION: 001 DATE: 01/13/07 REV: A	CUSTOMER DRAWING PART NO.: 00779 REV: 2 SHEET: 2 OF 4	Tech Electronics Harrisburg, PA 17105-3600 CAGE ASSEMBLY, THRU BEZEL, QSFP, WITH HEAT SINK 1888631
---	--	--	--	---

REV. NO.		REVISIONS			
NO.	DATE	DESCRIPTION	BY	CHK	APP
GP	00	SEE SHEET 1			



DATE: 08/24/2001 BY: TECH ELECTRONICS CORPORATION, ALL RIGHTS RESERVED		DATE: 08/24/2001 BY: TECH ELECTRONICS CORPORATION, ALL RIGHTS RESERVED		DATE: 08/24/2001 BY: TECH ELECTRONICS CORPORATION, ALL RIGHTS RESERVED	
DATE: 08/24/2001 BY: TECH ELECTRONICS CORPORATION, ALL RIGHTS RESERVED		DATE: 08/24/2001 BY: TECH ELECTRONICS CORPORATION, ALL RIGHTS RESERVED		DATE: 08/24/2001 BY: TECH ELECTRONICS CORPORATION, ALL RIGHTS RESERVED	
DATE: 08/24/2001 BY: TECH ELECTRONICS CORPORATION, ALL RIGHTS RESERVED		DATE: 08/24/2001 BY: TECH ELECTRONICS CORPORATION, ALL RIGHTS RESERVED		DATE: 08/24/2001 BY: TECH ELECTRONICS CORPORATION, ALL RIGHTS RESERVED	
DATE: 08/24/2001 BY: TECH ELECTRONICS CORPORATION, ALL RIGHTS RESERVED		DATE: 08/24/2001 BY: TECH ELECTRONICS CORPORATION, ALL RIGHTS RESERVED		DATE: 08/24/2001 BY: TECH ELECTRONICS CORPORATION, ALL RIGHTS RESERVED	

REV. NO.		REVISIONS	
NO.	DATE	DESCRIPTION	BY
00		SEE SHEET 1	



CROSS-HATCHED AREA DENOTES COMPONENT AND TRACE KEEP-OUT (EXCEPT CHASSIS GROUND)

THIS AREA DENOTES COMPONENT KEEP-OUT (TRACES ALLOWED)

RECOMMENDED PCB LAYOUT
SCALE 8:1

DATE: 08/24/2007 BY: PCB ELECTRONICS CORPORATION ALL RIGHTS RESERVED	DATE: 08/24/2007 BY: PCB ELECTRONICS CORPORATION ALL RIGHTS RESERVED	DATE: 08/24/2007 BY: PCB ELECTRONICS CORPORATION ALL RIGHTS RESERVED	DATE: 08/24/2007 BY: PCB ELECTRONICS CORPORATION ALL RIGHTS RESERVED	DATE: 08/24/2007 BY: PCB ELECTRONICS CORPORATION ALL RIGHTS RESERVED
TITLE: CUSTOMER DRAWING PART NO.: 188-2286 REV: 00		DATE: 08/24/2007 BY: PCB ELECTRONICS CORPORATION ALL RIGHTS RESERVED		DATE: 08/24/2007 BY: PCB ELECTRONICS CORPORATION ALL RIGHTS RESERVED
CUSTOMER DRAWING		DATE: 08/24/2007 BY: PCB ELECTRONICS CORPORATION ALL RIGHTS RESERVED		DATE: 08/24/2007 BY: PCB ELECTRONICS CORPORATION ALL RIGHTS RESERVED