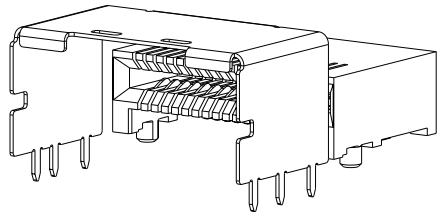
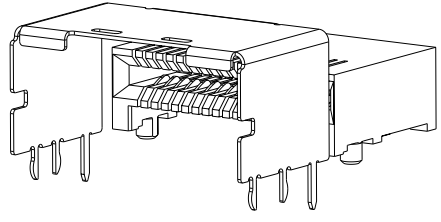


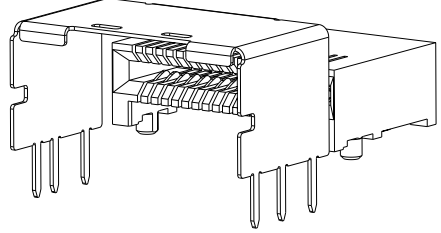
REV	DATE	DESCRIPTION	BY	CHK	APP
B1		REVISED PER ECO-09-021480			



1888019-2
 SHOWN WITHOUT PICK AND PLACE DEVICE
 SCALE 8:1

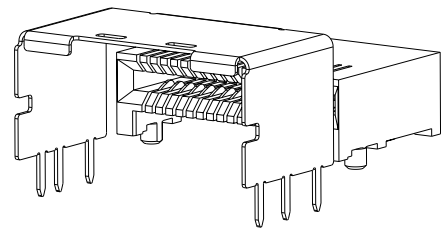


1888019-4
 SHOWN WITHOUT PICK AND PLACE DEVICE
 SCALE 8:1



1888019-8
 SHOWN WITHOUT PICK AND PLACE DEVICE
 SCALE 8:1

- △ MATERIAL: LCP, BLACK.
- △ MATERIAL: PHOSPHOR BRONZE PER ASTM B 103.
- △ FINISH: 0.76µm MIN GOLD PLATE PER ASTM B 488, APPLIES TO INTERFACE AREA AND 2.03µm MIN TIN PLATE SOLDER TAILS, ALL OVER 3.81µm MIN NICKEL PLATE PER QQ-N-290.
- △ MATERIAL: NICKEL-SILVER PER ASTM B 122.
- △ DATUM AND BASIC DIMENSION ESTABLISHED BY CUSTOMER.
- 6. REFER TO CUSTOMER DRAWING 1761987 FOR CONNECTOR DETAILS.
- 7. PACKAGED IN TAPE AND REEL PER EIA-481.
- △ FINISH: 0.38µm MIN GOLD PLATE PER ASTM B 488, APPLIES TO INTERFACE AREA AND 2.03µm MIN TIN PLATE SOLDER TAILS, ALL OVER 3.81µm MIN NICKEL PLATE PER QQ-N-290.

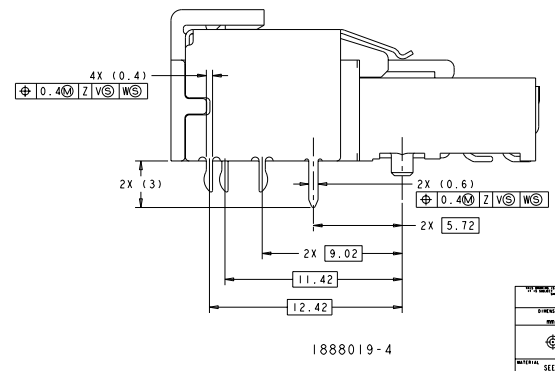
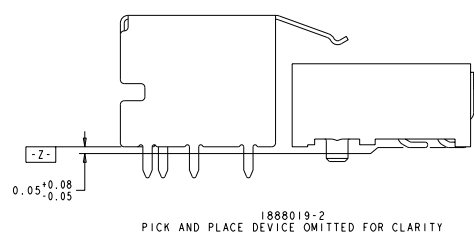
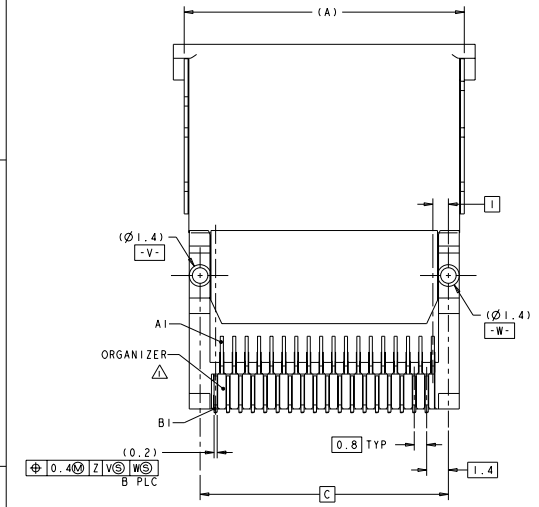
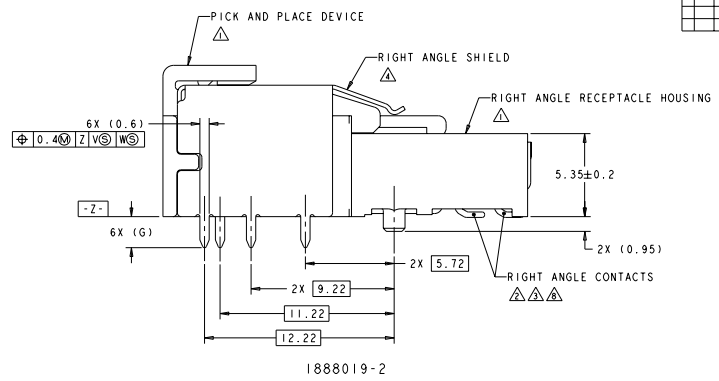
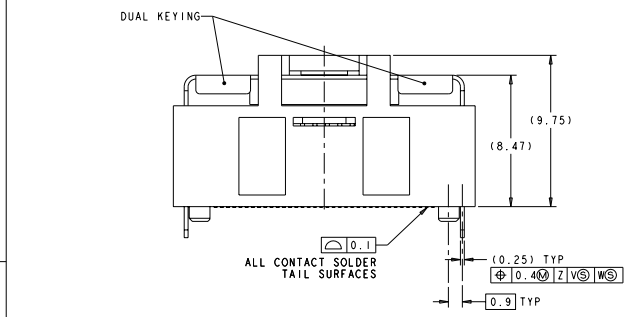


1888019-6
 SHOWN WITHOUT PICK AND PLACE DEVICE
 SCALE 8:1

△	THRU HOLE	3.5	17.8	16	16	36	18.05	36	1-1888019-2
	THRU HOLE	2.8	17.8	16	16	36	18.05	36	1-1888019-1
	PRESS FIT	-	17.8	16	16	36	18.05	36	1-1888019-0
△	THRU HOLE	2	17.8	16	16	36	18.05	36	1888019-9
	THRU HOLE	3.5	17.8	16	16	36	18.05	36	1888019-8
	THRU HOLE	2.8	17.8	16	16	36	18.05	36	1888019-6
	PRESS FIT	-	17.8	16	16	36	18.05	36	1888019-4
	THRU HOLE	2	17.8	16	16	36	18.05	36	1888019-2
FINISH	SHELL TYPE	G	E	D	C	B	A	POSN	PART NUMBER

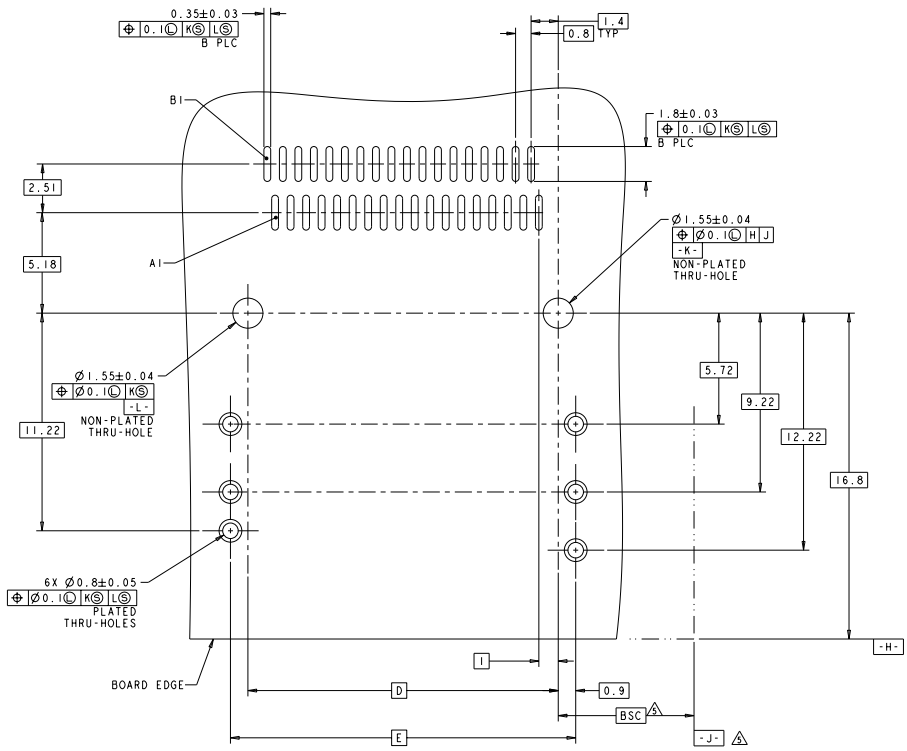
DATE: 19 JUL 2005	DATE: 19 JUL 2005	DATE: 19 JUL 2005
BY: J. COMBS	BY: J. COMBS	BY: J. COMBS
CHK: J. COMBS	CHK: J. COMBS	CHK: J. COMBS
APP: J. COMBS	APP: J. COMBS	APP: J. COMBS
REV: 00	REV: 00	REV: 00
PROJ: 188-2234	PROJ: 188-2234	PROJ: 188-2234
APP: 188-2234	APP: 188-2234	APP: 188-2234
REV: 00	REV: 00	REV: 00
DATE: 19 JUL 2005	DATE: 19 JUL 2005	DATE: 19 JUL 2005
BY: J. COMBS	BY: J. COMBS	BY: J. COMBS
CHK: J. COMBS	CHK: J. COMBS	CHK: J. COMBS
APP: J. COMBS	APP: J. COMBS	APP: J. COMBS
REV: 00	REV: 00	REV: 00
PROJ: 188-2234	PROJ: 188-2234	PROJ: 188-2234
APP: 188-2234	APP: 188-2234	APP: 188-2234
REV: 00	REV: 00	REV: 00
DATE: 19 JUL 2005	DATE: 19 JUL 2005	DATE: 19 JUL 2005
BY: J. COMBS	BY: J. COMBS	BY: J. COMBS
CHK: J. COMBS	CHK: J. COMBS	CHK: J. COMBS
APP: J. COMBS	APP: J. COMBS	APP: J. COMBS
REV: 00	REV: 00	REV: 00
PROJ: 188-2234	PROJ: 188-2234	PROJ: 188-2234
APP: 188-2234	APP: 188-2234	APP: 188-2234
REV: 00	REV: 00	REV: 00

REVISOR		REVISIONS	
DATE	BY	DESCRIPTION	DATE
GP	00	SEE SHEET 1	



DATE: 18 JUL 2005	BY: J. CONLEY	REV: 1	DATE: 18 JUL 2005	BY: J. CONLEY	REV: 1
DATE: 18 JUL 2005	BY: J. CONLEY	REV: 1	DATE: 18 JUL 2005	BY: J. CONLEY	REV: 1
DATE: 18 JUL 2005	BY: J. CONLEY	REV: 1	DATE: 18 JUL 2005	BY: J. CONLEY	REV: 1
DATE: 18 JUL 2005	BY: J. CONLEY	REV: 1	DATE: 18 JUL 2005	BY: J. CONLEY	REV: 1
DATE: 18 JUL 2005	BY: J. CONLEY	REV: 1	DATE: 18 JUL 2005	BY: J. CONLEY	REV: 1
DATE: 18 JUL 2005	BY: J. CONLEY	REV: 1	DATE: 18 JUL 2005	BY: J. CONLEY	REV: 1
DATE: 18 JUL 2005	BY: J. CONLEY	REV: 1	DATE: 18 JUL 2005	BY: J. CONLEY	REV: 1
DATE: 18 JUL 2005	BY: J. CONLEY	REV: 1	DATE: 18 JUL 2005	BY: J. CONLEY	REV: 1
DATE: 18 JUL 2005	BY: J. CONLEY	REV: 1	DATE: 18 JUL 2005	BY: J. CONLEY	REV: 1
DATE: 18 JUL 2005	BY: J. CONLEY	REV: 1	DATE: 18 JUL 2005	BY: J. CONLEY	REV: 1

REV. NO.		REVISIONS	
NO.	DATE	DESCRIPTION	BY
00		SEE SHEET 1	



RECOMMENDED PCB LAYOUT
 SCALE 10:1

DATE: 18 JUL 2005 BY: J. COMBER CHECKED: J. HEARY DATE: 18 JUL 2005 TITLE: 188-2234 APPLICATION: EVERCLEAR MINI-SAS RIGHT ANGLE INTERNAL RECEPTACLE ASSEMBLY WITH DUAL KEYSHELL PART: 00779 CUSTOMER DRAWING: 1888019		Tech Electronics Harrisburg, PA 17105-3600 EVERCLEAR MINI-SAS RIGHT ANGLE INTERNAL RECEPTACLE ASSEMBLY WITH DUAL KEYSHELL PART: 00779 CUSTOMER DRAWING: 1888019 SHEET: 8:1 OF 3
--	--	--