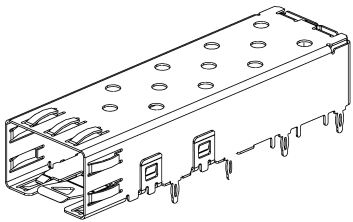
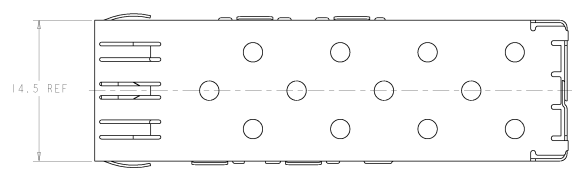


8	7	6	5	4	3	2	1
DATE STARTED BY: M00000000	REVISED FOR: M00000000						
BY: TYPHOON ELECTRONICS CORPORATION, ALL RIGHTS RESERVED							

REV	DATE	DESCRIPTION	BY	CHKD	APPD
00					
1		REVISED PER EC 0513-0462-04	MEHRA	JG	PD
2		REVISED PER ECO-93-016681	MEHRA	BM	SS

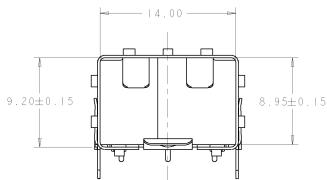


SCALE 4:1



14.5 REF

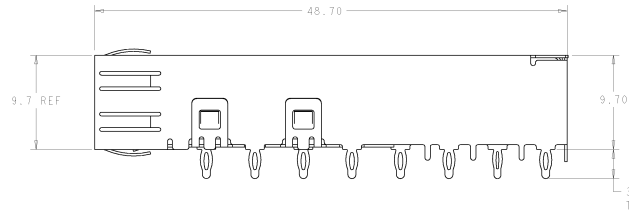
- △ 0.25 THICK COPPER ALLOY.
- △ TIN, NONPLATED EDGES PERMISSIBLE.
- 3. SFP MSA COMPATIBLE.
- △ PADS AND VIAS CHASSIS GROUND.
- △ DATUM AND BASIC DIMENSION ESTABLISHED BY CUSTOMER.
- 6. MINIMUM PC BOARD THICKNESS:
SINGLE SIDED= 1.45
DOUBLE SIDED= 3.00



9.20±0.15

14.00

8.95±0.15

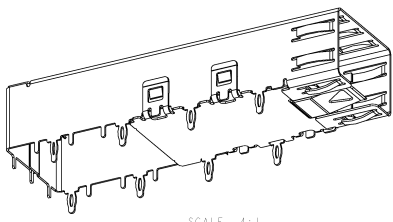
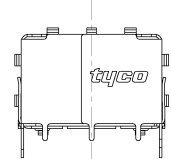


9.7 REF

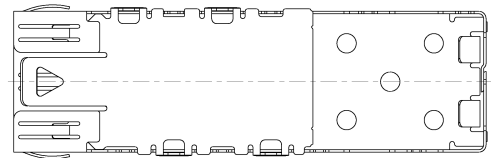
48.70

9.70

3.00 TYP
TAIL LENGTH



SCALE 4:1



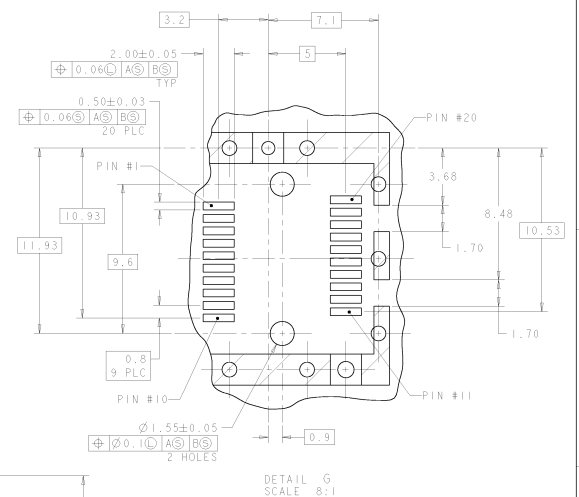
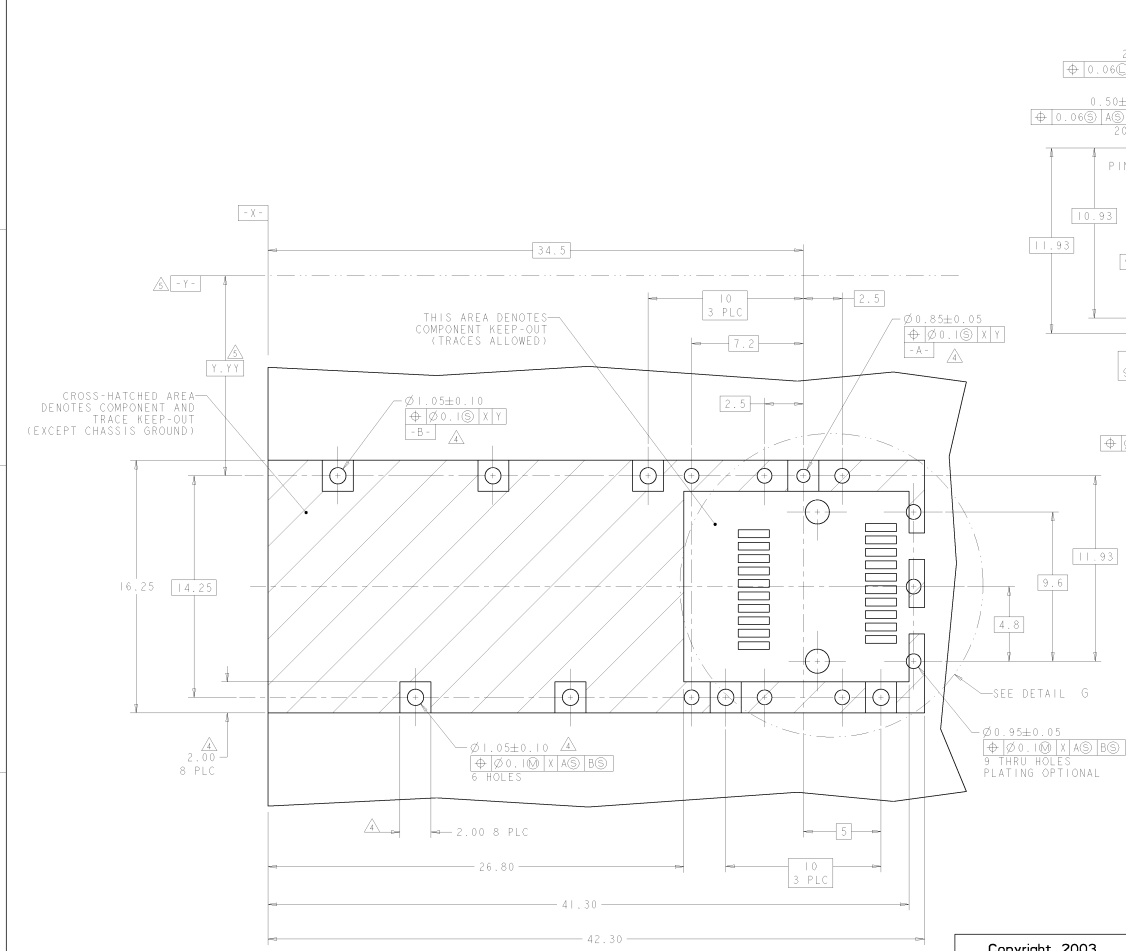
1658524-1
PART NUMBER

Copyright 2003
Tyco Electronics Corp
All Rights Reserved

APPROVED FOR RELEASE BY THE NATIONAL ARCHIVES DATE 10-10-2013		CHECKED BY: M00000000 DESIGNED BY: M00000000 DRAWN BY: M00000000 DATE: 03-13-02		Tyco Electronics Tyco Electronics HARRISBURG, PA 17105-0008	
MATERIAL:		FINISH:		CAGE ASSEMBLY, 8 PRESS FIT, SFP	
CUSTOMER DRAWING:		PART: 1658524		REVISED BY:	

8	7	6	5	4	3	2	1
DATE MANUFACTURED	REVISED FOR MANUFACTURE						
BY TACO ELECTRONICS CORPORATION, ALL RIGHTS RESERVED							

REV	DATE	DESCRIPTION	BY	CHKD	APPD
00		SEE SHEET 1			



RECOMMENDED PCB LAYOUT
SCALE 8:1

Copyright 2003
Tyco Electronics Corp
All Rights Reserved

DRAWN BY: [] CHECKED BY: [] DATE: []	PROJECT NO: [] PART NO: [] REV: []	TACO ELECTRONICS HARRISBURG, PA 17110-8808 PHONE: 717-658-1000 FAX: 717-658-1001 E-MAIL: SALES@TACO.COM	CUSTOMER DRAWING: [] PART: [] REV: []
---	---	---	--