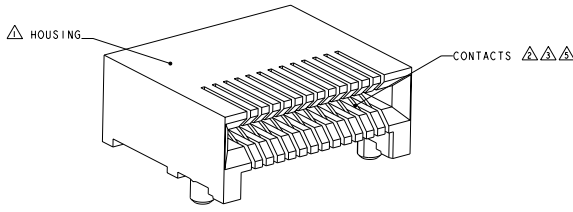
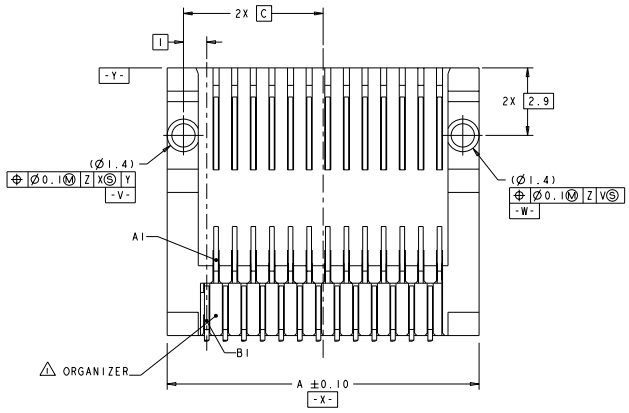
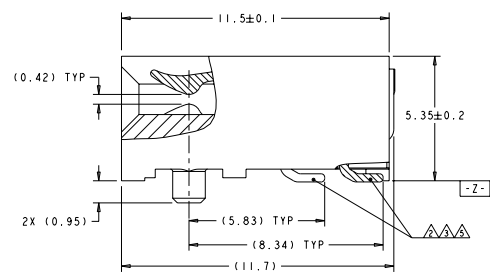
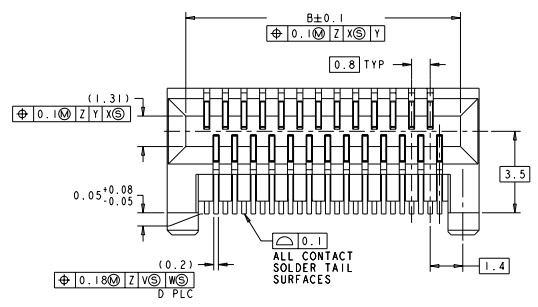


REV	DESCRIPTION	DATE	BY	CHK
00	AI REVISED PER ECO-09-021480			



26 POSITION RECEPTACLE
SCALE 9:1

- △ MATERIAL: LCP, BLACK.
- △ MATERIAL: PHOSPHOR BRONZE PER ASTM B 103.
- △ FINISH: 0.76µm MIN GOLD PLATE PER ASTM B 488, APPLIES TO INTERFACE AREA AND 2.03µm MIN TIN PLATE SOLDER TAILS, ALL OVER 3.81µm MIN NICKEL PLATE PER QQ-N-290.
- △ DATUM AND BASIC DIMENSION ESTABLISHED BY CUSTOMER.
- △ FINISH: 0.38µm MIN GOLD PLATE PER ASTM B 488, APPLIES TO INTERFACE AREA AND 2.03µm MIN TIN PLATE SOLDER TAILS, ALL OVER 3.81µm MIN NICKEL PLATE PER QQ-N-290.



FINISH	PACKAGING	DIMENSIONS (mm)						PART NUMBER
		E	D	C	B	A	POSN	
△	TAPE AND REEL	16.80	38	8.40	16.60	18.10	38	1-1761987-8
		16.00	36	8.00	15.80	17.40	36	1-1761987-7
		12.00	26	6.00	11.80	13.40	26	1-1761987-6
		28.80	68	14.80	28.60	30.20	68	1-1761987-5
		16.80	38	8.40	16.60	18.10	38	1-1761987-4
		23.20	54	11.60	23.00	24.60	54	1-1761987-3
	TUBE	21.60	50	10.80	21.40	23.00	50	1-1761987-2
		16.00	36	8.00	15.80	17.40	36	1-1761987-1
		12.00	26	6.00	11.80	13.40	26	1-1761987-0
		16.80	38	8.40	16.60	18.10	38	1761987-9
		16.00	36	8.00	15.80	17.40	36	1761987-8
		12.00	26	6.00	11.80	13.40	26	1761987-7
△	TAPE AND REEL	16.80	38	8.40	16.60	18.10	38	1761987-6
		28.80	68	14.80	28.60	30.20	68	1761987-5
		16.80	38	8.40	16.60	18.10	38	1761987-4
		23.20	54	11.60	23.00	24.60	54	1761987-3
		21.60	50	10.80	21.40	23.00	50	1761987-2
		16.00	36	8.00	15.80	17.40	36	1761987-1
TUBE	12.00	26	6.00	11.80	13.40	26	1761987-0	

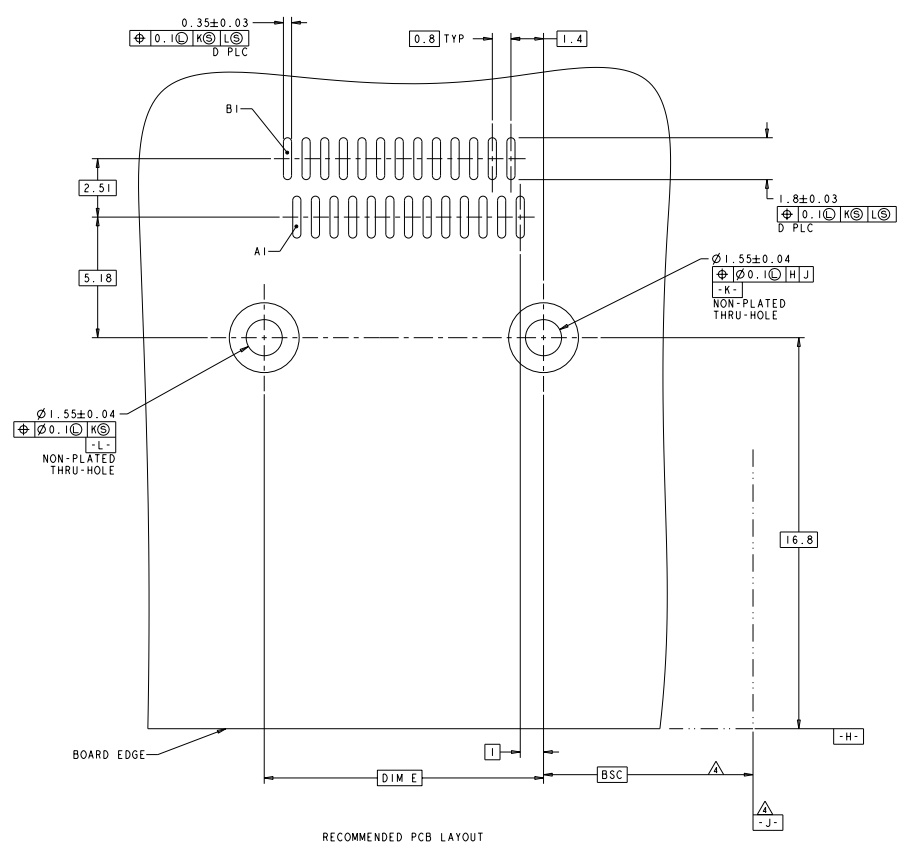
DATE: 06/24/2005	BY: J. COMBES	DATE: 06/24/2005	BY: J. COMBES
DATE: 06/24/2005	BY: J. COMBES	DATE: 06/24/2005	BY: J. COMBES
DATE: 06/24/2005	BY: J. COMBES	DATE: 06/24/2005	BY: J. COMBES
DATE: 06/24/2005	BY: J. COMBES	DATE: 06/24/2005	BY: J. COMBES

EVERCLEAR Mini-SAS RECEPTACLE CONNECTOR ASSEMBLY - RIGHT ANGLE, SURFACE MOUNT

SCALE: 9:1

CUSTOMER DRAWING

REV		REVISIONS	
NO	DATE	DESCRIPTION	BY
00		SEE SHEET 1	



RECOMMENDED PCB LAYOUT

DATE: 29 JUN 2005 TIME: 10:00 AM DRAWN BY: J. HEARY CHECKED BY: J. HEARY APPROVED BY: J. HEARY PART NO: 100-2234 REV: 001 CUSTOMER DRAWING		DATE: 29 JUN 2005 TIME: 10:00 AM DRAWN BY: J. HEARY CHECKED BY: J. HEARY APPROVED BY: J. HEARY PART NO: 100-2234 REV: 001 CUSTOMER DRAWING		DATE: 29 JUN 2005 TIME: 10:00 AM DRAWN BY: J. HEARY CHECKED BY: J. HEARY APPROVED BY: J. HEARY PART NO: 100-2234 REV: 001 CUSTOMER DRAWING	
EVERCLEAR MINI-SAS RECEPTACLE CONNECTOR ASSEMBLY, RIGHT ANGLE, SURFACE MOUNT		EVERCLEAR MINI-SAS RECEPTACLE CONNECTOR ASSEMBLY, RIGHT ANGLE, SURFACE MOUNT		EVERCLEAR MINI-SAS RECEPTACLE CONNECTOR ASSEMBLY, RIGHT ANGLE, SURFACE MOUNT	
STATE: CA COUNTY: 00779 CITY: 1761987		STATE: CA COUNTY: 00779 CITY: 1761987		STATE: CA COUNTY: 00779 CITY: 1761987	
SHEET 12 OF 22		SHEET 12 OF 22		SHEET 12 OF 22	