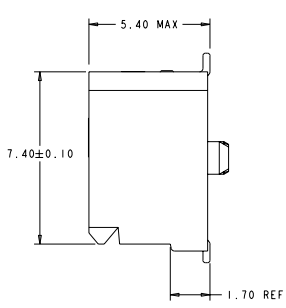
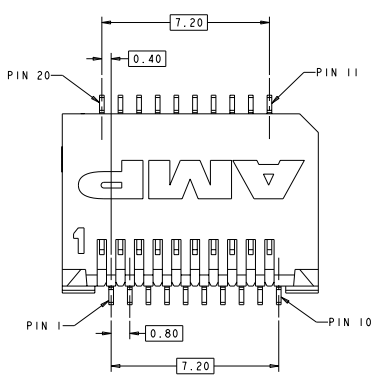
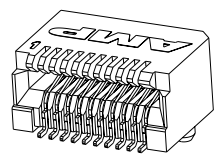


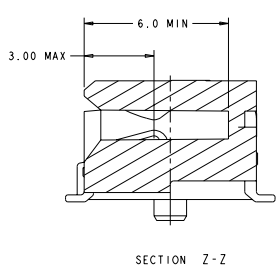
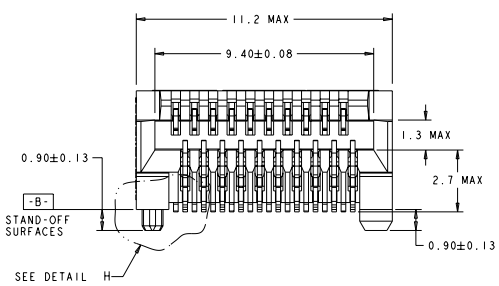
REV	DATE	DESCRIPTION	BY	CHK	APP
A	0513-0307-05	REVISED PER EC 0513-0307-05	JAFMAN	DM	SS
B	0513-0520-05	REVISED PER EC 0513-0520-05	JAFMAN	DM	SS
C	0513-0516-05	REVISED PER EC 0513-0516-05	JAFMAN	DM	SS
D	07-0255E2	REVISED PER ECR 07-0255E2	ZHANG	LL	ST



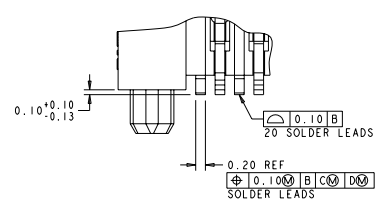
- PART COMPATIBLE WITH SFP MSA. REFER TO THE SFP MSA FOR DIMENSIONS NOT SHOWN ON THIS PRINT.
  - HOUSING: HIGH TEMPERATURE LCP, UL 94V-0 RATED, BLACK. CONTACTS: PHOSPHOR BRONZE.
  - CONTACTS: 0.00076 MIN GOLD IN CONTACT AREA, 0.00013 MIN GOLD ON SOLDER AREA, OVER 0.0038 MIN NICKEL UNDERPLATE ON ENTIRE CONTACT. LUBRICANT ON GOLD PLATE CONTACT AREAS.
  - PACKAGED 480 PIECES PER REEL.
- △ DATUMS AND BASIC DIMENSIONS TO BE ESTABLISHED BY CUSTOMER, SEE DRAWING 1367034 FOR LAYOUT WHEN USED WITH 1367034-1 BOTTOM CAGE (STANDARD SFP APPLICATION).



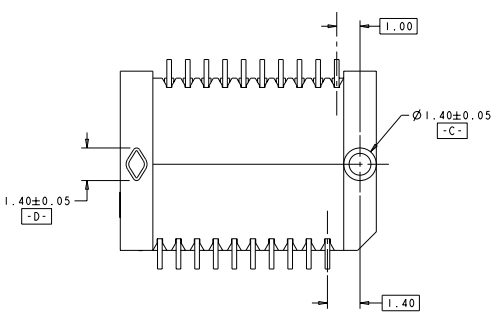
SCALE 8:1



SECTION Z-Z



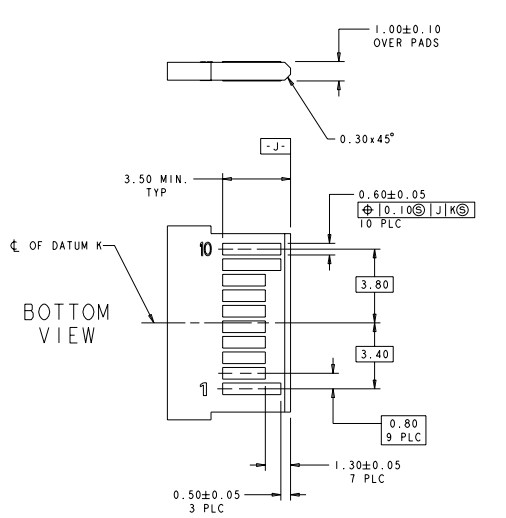
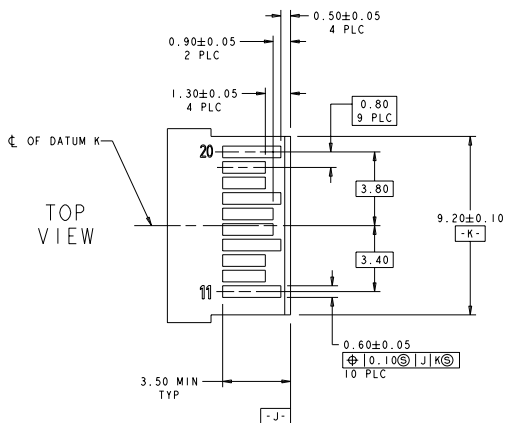
DETAIL H SCALE 25:1



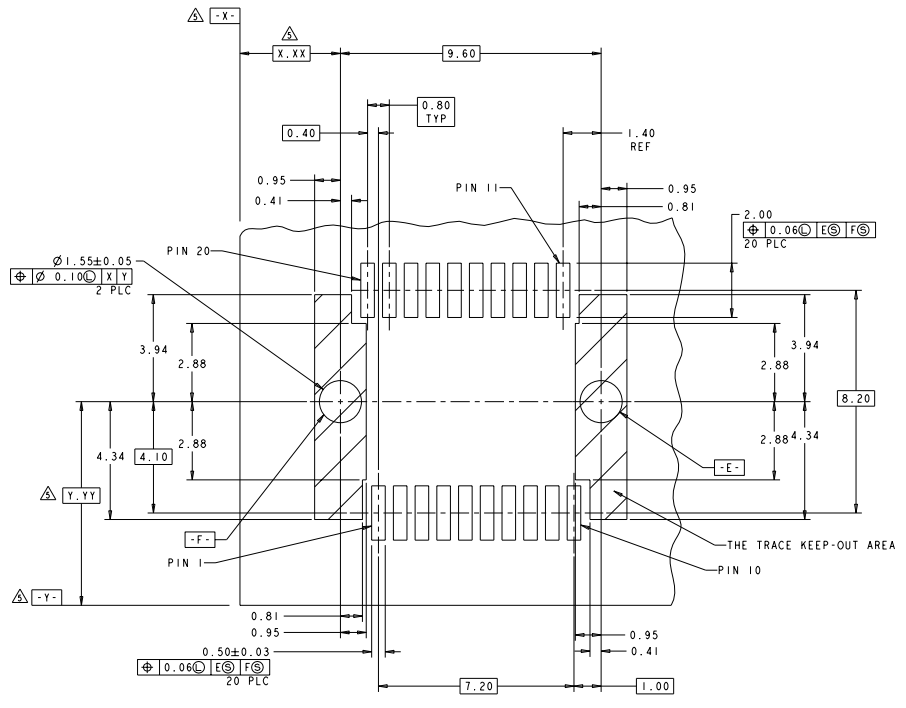
△	1658197-1
FINISH	PART NUMBER

DATE: 08/20/2005	BY: PACE ELECTRONICS CORPORATION	REV: 00	DESCRIPTION: PT CONNECTOR ASSEMBLY, LUBED, 20 POSITION SFP, RIGHT ANGLE, 0.8MM PITCH
DESIGNED BY: JAFMAN	DESIGNED DATE: 05/13/05	DATE: 08/20/05	REV: 00
DATE: 08/20/05	BY: JAFMAN	REV: 00	DESCRIPTION: PT CONNECTOR ASSEMBLY, LUBED, 20 POSITION SFP, RIGHT ANGLE, 0.8MM PITCH
DATE: 08/20/05	BY: JAFMAN	REV: 00	DESCRIPTION: PT CONNECTOR ASSEMBLY, LUBED, 20 POSITION SFP, RIGHT ANGLE, 0.8MM PITCH
DATE: 08/20/05	BY: JAFMAN	REV: 00	DESCRIPTION: PT CONNECTOR ASSEMBLY, LUBED, 20 POSITION SFP, RIGHT ANGLE, 0.8MM PITCH
DATE: 08/20/05	BY: JAFMAN	REV: 00	DESCRIPTION: PT CONNECTOR ASSEMBLY, LUBED, 20 POSITION SFP, RIGHT ANGLE, 0.8MM PITCH
DATE: 08/20/05	BY: JAFMAN	REV: 00	DESCRIPTION: PT CONNECTOR ASSEMBLY, LUBED, 20 POSITION SFP, RIGHT ANGLE, 0.8MM PITCH
DATE: 08/20/05	BY: JAFMAN	REV: 00	DESCRIPTION: PT CONNECTOR ASSEMBLY, LUBED, 20 POSITION SFP, RIGHT ANGLE, 0.8MM PITCH
DATE: 08/20/05	BY: JAFMAN	REV: 00	DESCRIPTION: PT CONNECTOR ASSEMBLY, LUBED, 20 POSITION SFP, RIGHT ANGLE, 0.8MM PITCH
DATE: 08/20/05	BY: JAFMAN	REV: 00	DESCRIPTION: PT CONNECTOR ASSEMBLY, LUBED, 20 POSITION SFP, RIGHT ANGLE, 0.8MM PITCH

REV	DATE	DESCRIPTION	BY	CHK	APP
ES	00	SEE SHEET 1			



RECOMMENDED LAYOUT DETAIL  
 MATING TRANSCEIVER PCB  
 SCALE 10:1



RECOMMENDED PCB LAYOUT DETAIL  
 CONECTOR MOUNTING SIDE  
 SCALE 14:1

PART NO. 1658197 REV. 00 DATE 08/18/00 BY J. B. BURGLEY CHECKED BY J. B. BURGLEY APPROVED BY J. B. BURGLEY CUSTOMER DRAWING	QUANTITY 250000 ORDER NO. 02SEP03 PART NO. 1658197 REV. 00 DATE 08/18/00 BY J. B. BURGLEY CHECKED BY J. B. BURGLEY APPROVED BY J. B. BURGLEY CUSTOMER DRAWING	TITLE PT CONNECTOR ASSEMBLY, LUBED. 20 POSITION SFP, RIGHT ANGLE, 0.6MM SCALE 14:1 SHEET 12 OF 22	Tech Electronics Corporation Skaneateles, P.O. Box 200230
---	---	---	--