

4

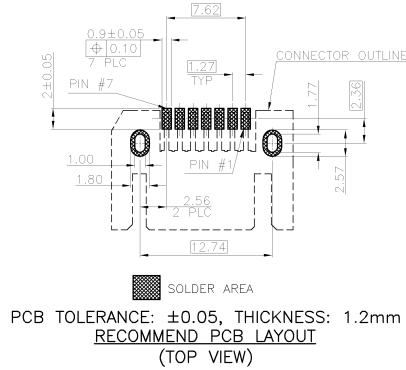
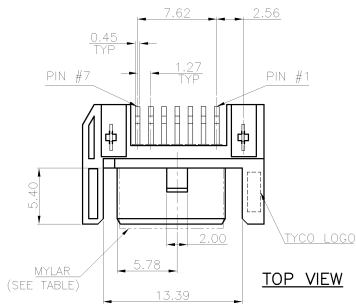
3

2

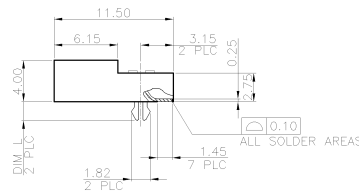
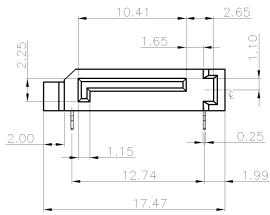
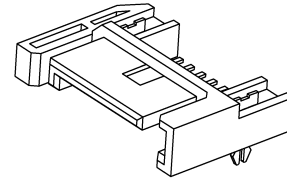
1

THIS DRAWING IS UNPUBLISHED. RELEASED FOR PUBLICATION AUG. 2006.
 COPYRIGHT 2010 BY TYCO ELECTRONICS CORPORATION. ALL RIGHTS RESERVED.

LOC	DIST	REVISIONS			
P	LTR	DESCRIPTION	DATE	DWN	APVD
DW	-	ECR-10-025196	08DEC10	AW	WK

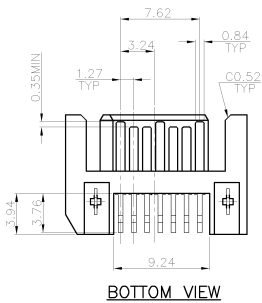


- NOTES:
- MATERIAL:
HOUSING: LCP WITH 30% GF, UL 94V-0, BLACK COLOR.
CONTACT: BRASS.
BOARDLOCK: BRASS.
MYLAR: PET, LXW=5.8X10.0, T=0.22mm
 - FINISH:
CONTACT: (SEE TABLE) GOLD PLATED ON CONTACT AREA, 2.54μm [100μ"] MIN. MATTE-TIN ON SOLDER TAIL, WITH ENTIRE CONTACT UNDERPLATED 1.27μm [50μ"] MIN. NICKEL.
BOARDLOCK: 2.54μm [100μ"] MIN. MATTE-TIN PLATING OVER 1.27μm [50μ"] MIN. NICKEL UNDERPLATING OVERALL.
 - REFLOW SOLDER CAPABLE TO 260°C PER TEC-109-201, CONDITION B.
 - PACKING: (SEE TABLE)



PIN DEFINITION (SIGNAL SEGMENT)		
NAME	TYPE	DESCRIPTION
S1	GND	
S2	A+	DIFFERENTIAL SIGNAL PAIR A
S3	A-	DIFFERENTIAL SIGNAL PAIR A
S4	GND	
S5	B-	DIFFERENTIAL SIGNAL PAIR B
S6	B+	DIFFERENTIAL SIGNAL PAIR B
S7	GND	

0.90	W	TAPE & REEL (SEE SHEET 3)	GOLD FLASH	1-1734698-4
1.80	W	TAPE & REEL (SEE SHEET 3)	0.762μm [30μ"]	1-1734698-3
1.80	W	TAPE & REEL (SEE SHEET 3)	0.381μm [15μ"]	1-1734698-2
1.80	W	TAPE & REEL (SEE SHEET 3)	GOLD FLASH	1-1734698-1
1.80	W/O	TUBE (SEE SHEET 2)	0.762μm [30μ"]	1734698-3
1.80	W/O	TUBE (SEE SHEET 2)	0.381μm [15μ"]	1734698-2
1.80	W/O	TUBE (SEE SHEET 2)	GOLD FLASH	1734698-1
DIM L (BOARDLOCK)	MYLAR	PACKAGING TYPE	MIN. GOLD THICKNESS	PART NUMBER



THIS DRAWING IS A CONTROLLED DOCUMENT.		DWN A. WU 19/JUN/2008	Tyco Electronics Corporation Taipei, Taiwan	
DIMENSIONS: MM		CHK S. CHIEN 19/JUN/2008	NAME	
TOLERANCES UNLESS OTHERWISE SPECIFIED:		APVD W. KODAMA 19/JUN/2008	PRODUCT SPEC 108-57469	
0 PLC ± -		APPLICATION SPEC		
1 PLC ± 0.3		WEIGHT 0.6 GRAMS		
2 PLC ± 0.25		CUSTOMER-DRAWING		
3 PLC ± 0.2		SCALE — SHEET 1 of 3		
4 PLC ± -		REV E		
ANGLES ± 3°		RESTRICTED TO		
MATERIAL SEE NOTE		FINISH SEE NOTE		

Tyco Electronics Corporation Taipei, Taiwan		NAME		RESTRICTED TO	
SERIAL ATA CONNECTOR, 7 POSITION, PLUG, RIGHT ANGLE, SMT TYPE		SIZE CAGE CODE DRAWING NO		A3 00779 C-1734698	
SCALE —		SHEET 1 of 3		REV E	

4

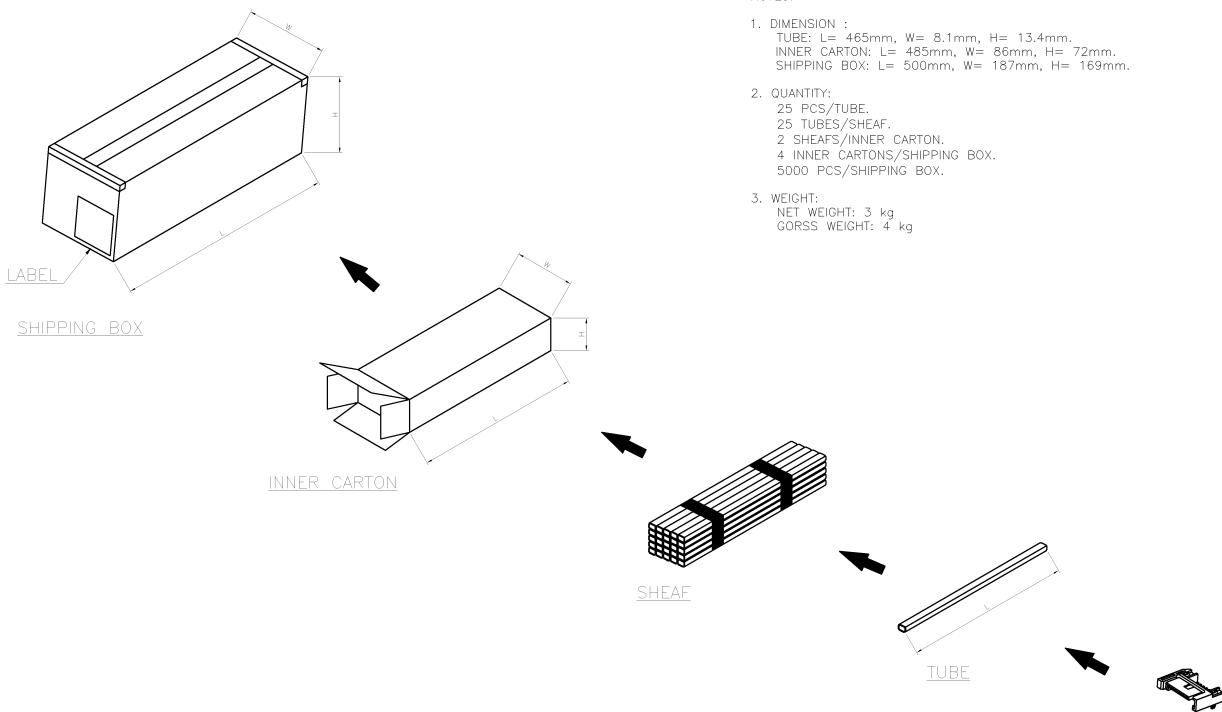
3

2

1

THIS DRAWING IS UNPUBLISHED. RELEASED FOR PUBLICATION AUG. 2006.
 © COPYRIGHT 2010 BY TYCO ELECTRONICS CORPORATION. ALL RIGHTS RESERVED.

LOC	DIST	REVISIONS			
P	LTR	DESCRIPTION	DATE	DWN	APVD
		SEE SHEET 1.			



- NOTES:
- DIMENSION :
 TUBE: L= 485mm, W= 8.1mm, H= 13.4mm.
 INNER CARTON: L= 485mm, W= 86mm, H= 72mm.
 SHIPPING BOX: L= 500mm, W= 187mm, H= 169mm.
 - QUANTITY:
 25 PCS/TUBE.
 25 TUBES/SHEAF.
 2 SHEAFS/INNER CARTON.
 4 INNER CARTONS/SHIPPING BOX.
 5000 PCS/SHIPPING BOX.
 - WEIGHT:
 NET WEIGHT: 3 kg
 GORSS WEIGHT: 4 kg

THIS DRAWING IS A CONTROLLED DOCUMENT.		DWN	Tyco Electronics Corporation Taipei, Taiwan	
DIMENSIONS: MM		CHK	NAME	
		APVD	SERIAL ATA CONNECTOR, 7 POSITION, PLUG, RIGHT ANGLE, SMT TYPE	
TOLERANCES UNLESS OTHERWISE SPECIFIED: 0 PLC ± - 1 PLC ± - 2 PLC ± - 3 PLC ± - 4 PLC ± - ANGLES ± -		PRODUCT SPEC	SIZE	RESTRICTED TO
MATERIAL	FINISH	APPLICATION SPEC	A3	
		WEIGHT	CAGE CODE	DRAWING NO
		CUSTOMER DRAWING	00779	1734698
		SCALE	SHEET	REV
			2 of 3	E

4

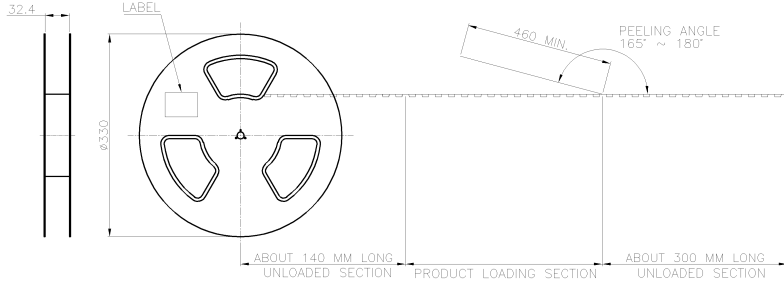
3

2

1

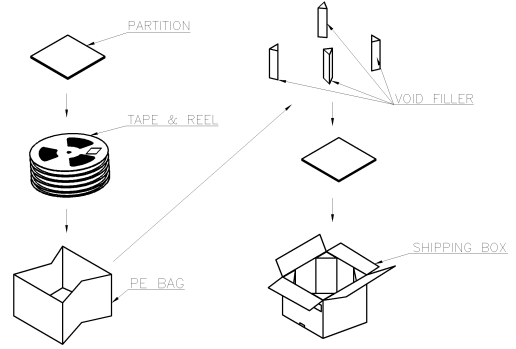
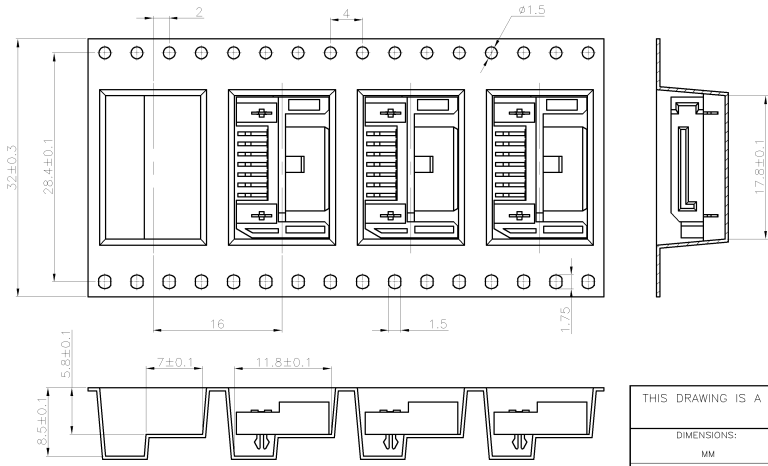
THIS DRAWING IS UNPUBLISHED. RELEASED FOR PUBLICATION AUG. 2006.
 © COPYRIGHT 2010 BY TYCO ELECTRONICS CORPORATION. ALL RIGHTS RESERVED.

LOC	DIST	REVISIONS			
P	LTR	DESCRIPTION	DATE	DWN	APVD
		SEE SHEET 1.			



- NOTES:
- MATERIAL:
 - 1.1 EMBOSS CARRIER: PS.
 - 1.2 COVER TAPE: PS.
 - 1.3 SHIPPING BOX: CORRUGATED FIBER.
 - DIMENSION:
 - 2.1 REEL: W= 32.0mm.
 - 2.2 SHIPPING BOX: L= 345mm, W= 345mm, H= 210mm.
 - QUANTITY:
 - 3.1 PRIMARY PACKING: 450 PCS/TAPE.
 - 3.2 SECONDARY PACKING: 5 REEL/SHIPPING BOX (2250 PCS).
 - WEIGHT:
 - 4.1 NET WEIGHT: 0.27kg/REEL, 1.75kg/SHIPPING BOX.
 - 4.2 GROSS WEIGHT: 0.72kg/REEL, 4.42kg/SHIPPING BOX.
 - PEELING RESISTANCE: 30.0gf~120.0gf.
(PEELING SPEED: 300 mm/min)

USER DIRECTION OF UNREELING →



THIS DRAWING IS A CONTROLLED DOCUMENT.		DWN		Tyco Electronics Corporation Taipei, Taiwan	
DIMENSIONS: MM		CHK		NAME	
TOLERANCES UNLESS OTHERWISE SPECIFIED:		APVD		SERIAL ATA CONNECTOR, 7 POSITION, PLUG, RIGHT ANGLE, SMT TYPE	
0 PLC ± -		PRODUCT SPEC		SIZE CAGE CODE DRAWING NO	
1 PLC ± -		APPLICATION SPEC		A3 00779 C-1734698	
2 PLC ± -		WEIGHT		RESTRICTED TO	
3 PLC ± -		CUSTOMER DRAWING		SCALE	
4 PLC ± -		SCALE		SHEET 3 of 3	
ANGLES ± -		SHEET		REV E	
FINISH		REV		E	