

4

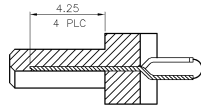
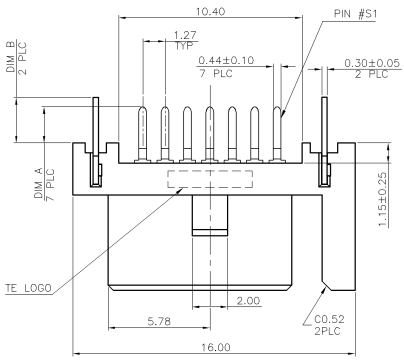
3

2

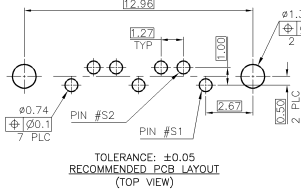
1

THIS DRAWING IS UNPUBLISHED. RELEASED FOR PUBLICATION AUG. 2006.
 © COPYRIGHT 2009 BY TYCO ELECTRONICS CORPORATION. ALL RIGHTS RESERVED.

LOC	DIST	REVISIONS			
P	LTR	DESCRIPTION	DATE	DWN	APVD
DW	-	REVISED (ECR-09-022119)	090CT09	SC	WK

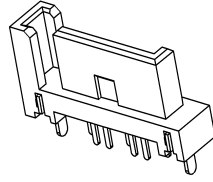
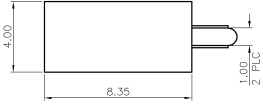
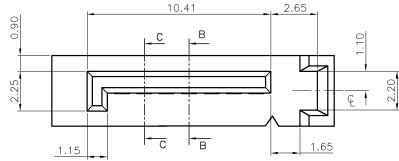


SECTION C-C

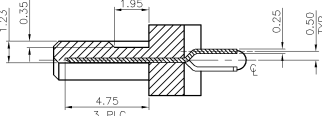
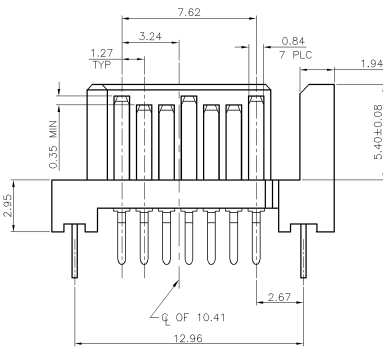


TOLERANCE: ±0.05
RECOMMENDED PCB LAYOUT (TOP VIEW)

- NOTE:
- MATERIAL:
HOUSING: LCP WITH 30% GF, UL 94V-0, BLACK COLOR.
OR
PA6T WITH 30% GF, 33% REGRIND, UL 94V-0, BLUE OR WHITE COLOR.
CONTACTS: BRASS.
BOARDLOCKS: BRASS.
 - FINISH:
CONTACTS: (SEE TABLE) GOLD PLATED ON CONTACT AREA, 2.54µm [100µ"] MIN. MATTE-TIN ON SOLDER TAIL, WITH ENTIRE CONTACT UNDERPLATED 1.27µm [50µ"] MIN. NICKEL.
BOARDLOCKS: 1.27µm [50µ"] MIN. NICKEL OVER 2.54µm [100µ"] MIN. TIN PLATED.
 - WAVE SOLDER CAPABLE TO 265°C PER TEST SPEC. 109-202, CONDITION B.



B	A	HOUSING COLOR	MIN. GOLD THICKNESS	PART NUMBER	STATUS
3.37	3.3	BLUE (293C)	0.381µm [15µ"]	1-1734699-5	AVAILABLE
		BLACK		1-1734699-4	AVAILABLE
3.37	3	BLUE (293C)	0.381µm [15µ"]	1-1734699-3	AVAILABLE
		BLACK		1-1734699-2	AVAILABLE
		WHITE	0.762µm [30µ"]	1734699-9	OBSOLETE
			0.381µm [15µ"]	1734699-8	OBSOLETE
		GOLD FLASH		1734699-7	AVAILABLE
			0.762µm [30µ"]	1734699-6	OBSOLETE
		BLUE (293C)	0.381µm [15µ"]	1734699-5	AVAILABLE
		GOLD FLASH		1734699-4	AVAILABLE
		BLACK	0.762µm [30µ"]	1734699-3	AVAILABLE
			0.381µm [15µ"]	1734699-2	AVAILABLE
		GOLD FLASH		1734699-1	AVAILABLE



SECTION B-B

THIS DRAWING IS A CONTROLLED DOCUMENT.

DWN A. WU 06JUN2008	Tyco Electronics Tyco Electronics Corporation Taipei, Taiwan
CHK S. HOU 06JUN2008	
APVD W. KODAMA 06JUN2008	NAME
PRODUCT SPEC 108-57469	SERIAL ATA, 7 POS., PLUG, VERTICAL, A TYPE, DIP.
QUALIFICATION SPEC 501-57539	
MATERIAL SEE NOTE	FINISH SEE NOTE
SIZE A3	CAGE CODE 00779
WEIGHT 0.48 GRAMS	DRAWING NO 1734699
CUSTOMER DRAWING	RESTRICTED TO
SCALE -	SHEET 1 of 2
REV E	

4

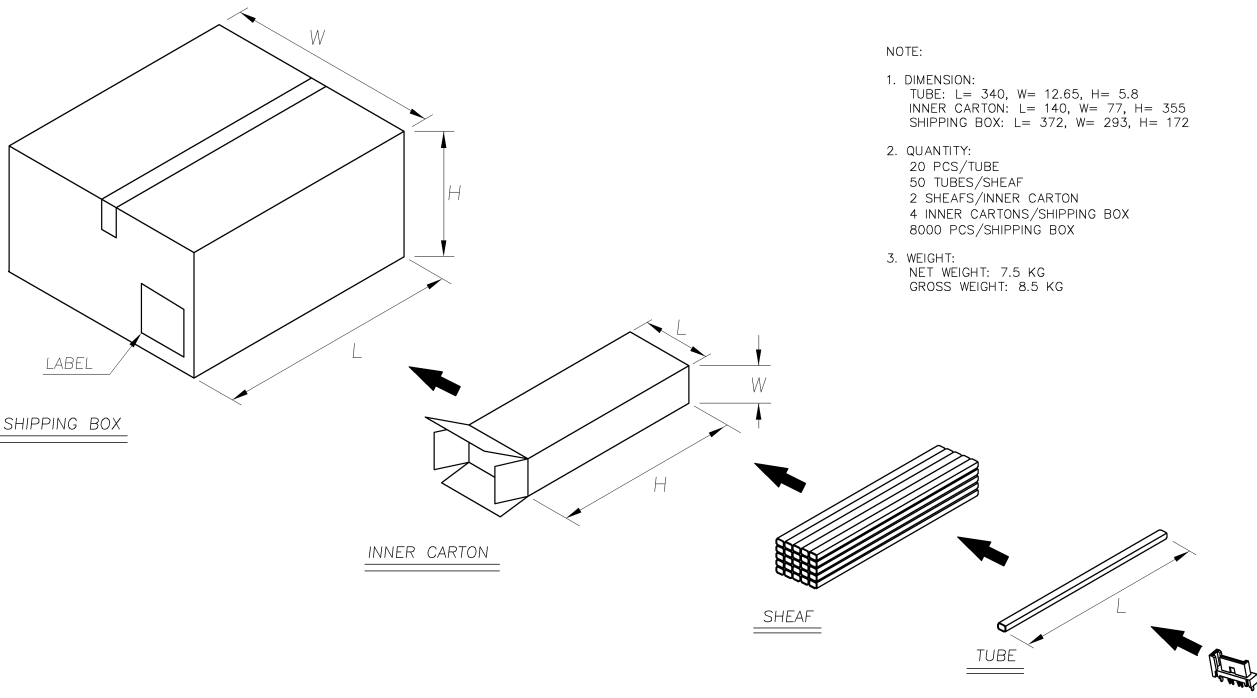
3

2

1

THIS DRAWING IS UNPUBLISHED. RELEASED FOR PUBLICATION AUG. 2006.
 © COPYRIGHT 2009 BY TYCO ELECTRONICS CORPORATION. ALL RIGHTS RESERVED.

LOC	DIST	REVISIONS			
P	LTR	DESCRIPTION	DATE	DWN	APVD
		SEE SHEET 1.			



- NOTE:
- DIMENSION:
 TUBE: L= 340, W= 12.65, H= 5.8
 INNER CARTON: L= 140, W= 77, H= 355
 SHIPPING BOX: L= 372, W= 293, H= 172
 - QUANTITY:
 20 PCS/TUBE
 50 TUBES/SHEAF
 2 SHEAFS/INNER CARTON
 4 INNER CARTONS/SHIPPING BOX
 8000 PCS/SHIPPING BOX
 - WEIGHT:
 NET WEIGHT: 7.5 KG
 GROSS WEIGHT: 8.5 KG

THIS DRAWING IS A CONTROLLED DOCUMENT.		DWN	Tyco Electronics Corporation Taipei, Taiwan																									
DIMENSIONS: MM		CHK	NAME																									
<table border="1"> <tr><td>0</td><td>PLC</td><td>±</td><td>-</td></tr> <tr><td>1</td><td>PLC</td><td>±</td><td>-</td></tr> <tr><td>2</td><td>PLC</td><td>±</td><td>-</td></tr> <tr><td>3</td><td>PLC</td><td>±</td><td>-</td></tr> <tr><td>4</td><td>PLC</td><td>±</td><td>-</td></tr> <tr><td colspan="2">ANGLES</td><td>±</td><td>-</td></tr> </table>		0	PLC	±	-	1	PLC	±	-	2	PLC	±	-	3	PLC	±	-	4	PLC	±	-	ANGLES		±	-	APVD	SERIAL ATA, 7 POS., PLUG, VERTICAL, A TYPE, DIP.	
0	PLC	±	-																									
1	PLC	±	-																									
2	PLC	±	-																									
3	PLC	±	-																									
4	PLC	±	-																									
ANGLES		±	-																									
MATERIAL		PRODUCT SPEC	SIZE	RESTRICTED TO																								
FINISH		APPLICATION SPEC	A3																									
		WEIGHT	CAGE CODE	DRAWING NO																								
			00779	1734699																								
		CUSTOMER DRAWING	SCALE	SHEET																								
				2 OF 2																								
				REV E																								