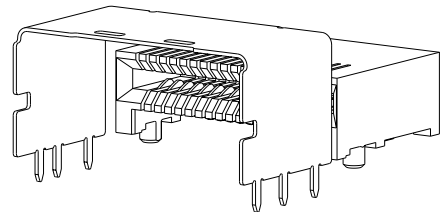
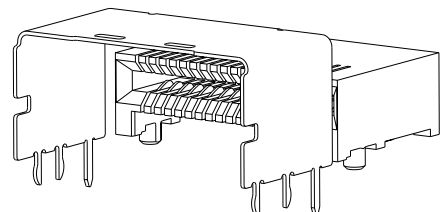


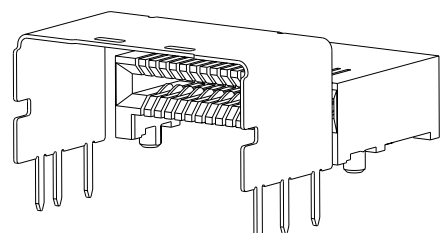
REV	DATE	DESCRIPTION	BY	CHKD	APPD
B1		REVISED PER ECO-09-021480	DMC/CRH	CR	DG
B2		REVISED PER ECO-10-016367	DMC/CRH	JT	ST



1888861-2 AND 1888861-9
 SHOWN WITHOUT PICK AND PLACE DEVICE

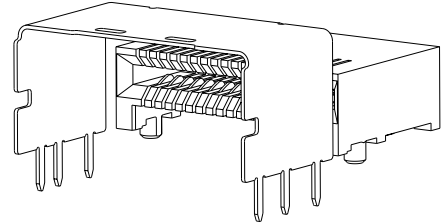


1888861-4 AND 1-1888861-0
 SHOWN WITHOUT PICK AND PLACE DEVICE



1888861-8 AND 1-1888861-2
 SHOWN WITHOUT PICK AND PLACE DEVICE

- △ MATERIAL: LCP, BLACK.
- △ MATERIAL: PHOSPHOR BRONZE PER ASTM B 103.
- △ FINISH: 0.76um MIN GOLD PLATE PER ASTM B 488, APPLIES TO INTERFACE AREA AND 2.03um MIN TIN PLATE SOLDER TAILS, ALL OVER 3.81um MIN NICKEL PLATE PER QQ-N-290.
- △ MATERIAL: NICKEL-SILVER PER ASTM B 122.
- △ DATUM AND BASIC DIMENSION ESTABLISHED BY CUSTOMER.
- 6. REFER TO CUSTOMER DRAWING 1761987 FOR CONNECTOR DETAILS.
- 7. PACKAGED IN TAPE AND REEL PER EIA-481.
- △ FINISH: 0.38um MIN GOLD PLATE PER ASTM B 488, APPLIES TO INTERFACE AREA AND 2.03um MIN TIN PLATE SOLDER TAILS, ALL OVER 3.81um MIN NICKEL PLATE PER QQ-N-290.

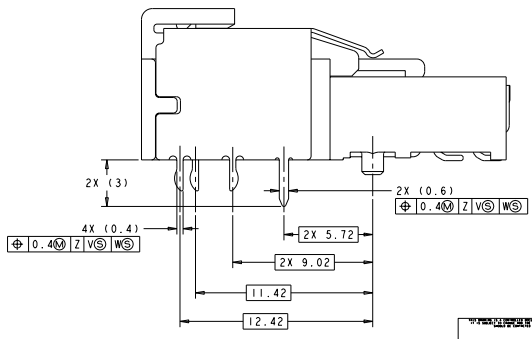
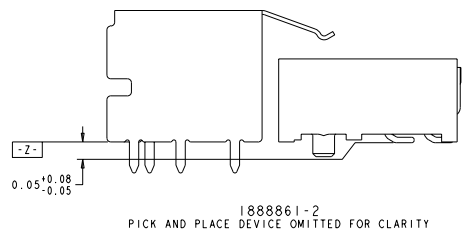
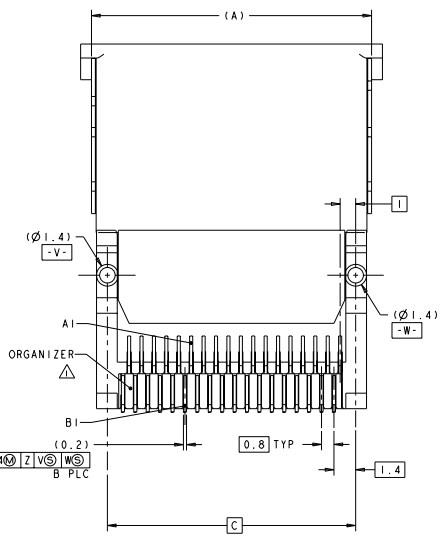
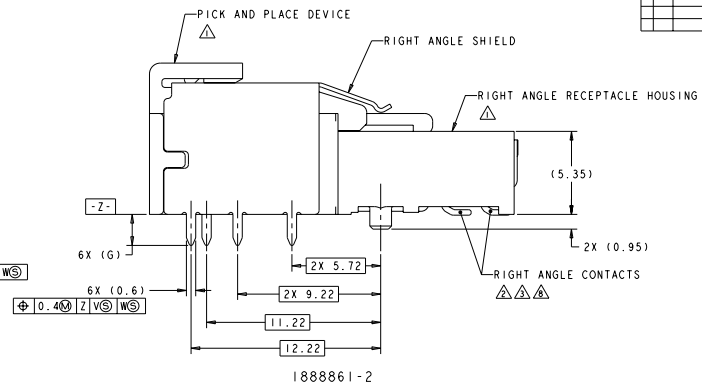
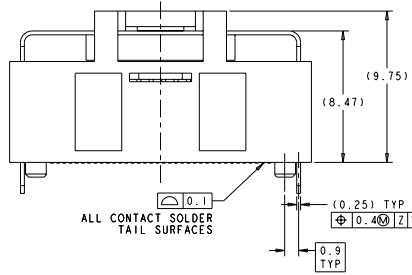


1888861-6 AND 1-1888861-1
 SHOWN WITHOUT PICK AND PLACE DEVICE

FINISH	REMARKS	G	E	D	C	B	A	POSN	PART NUMBER
△	THRU HOLE	3.5	17.8	16	16	36	18.05	36	1-1888861-2
	PRESS FIT	-	17.8	16	16	36	18.05	36	1-1888861-1
△	THRU HOLE	2	17.8	16	16	36	18.05	36	1888861-9
	THRU HOLE	3.5	17.8	16	16	36	18.05	36	1888861-8
	PRESS FIT	-	17.8	16	16	36	18.05	36	1888861-6
	THRU HOLE	2	17.8	16	16	36	18.05	36	1888861-4
△	THRU HOLE	2	17.8	16	16	36	18.05	36	1888861-2

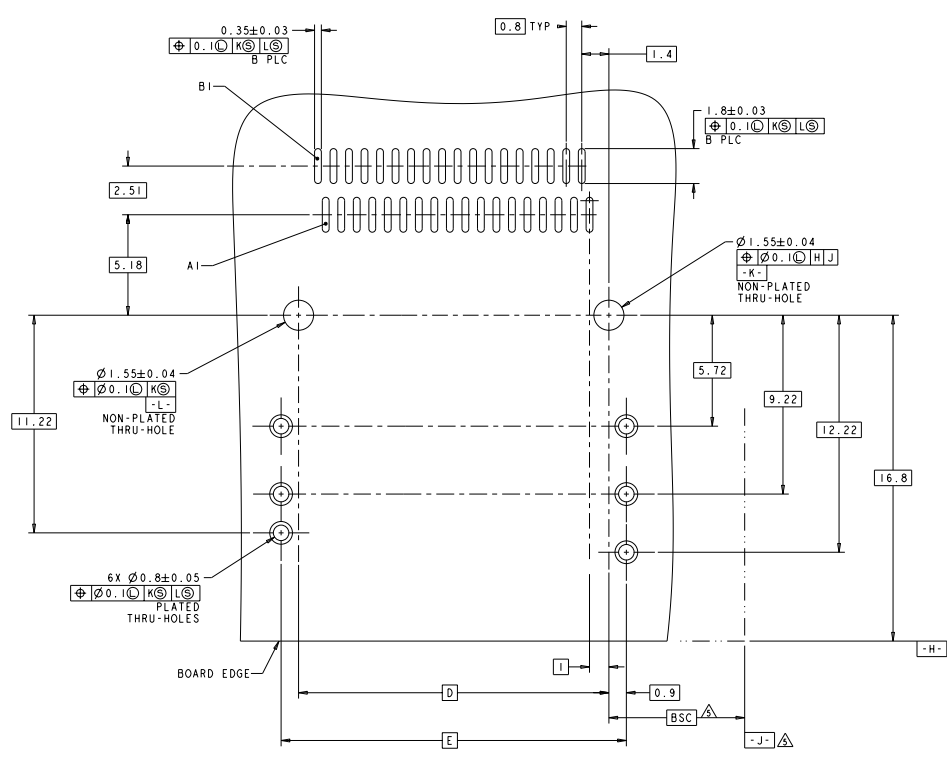
DATE: 0000000 BY: TECH ELECTRONICS CORPORATION ALL RIGHTS RESERVED	DATE: 0000000 BY: TECH ELECTRONICS CORPORATION ALL RIGHTS RESERVED	DATE: 0000000 BY: TECH ELECTRONICS CORPORATION ALL RIGHTS RESERVED	DATE: 0000000 BY: TECH ELECTRONICS CORPORATION ALL RIGHTS RESERVED	DATE: 0000000 BY: TECH ELECTRONICS CORPORATION ALL RIGHTS RESERVED	DATE: 0000000 BY: TECH ELECTRONICS CORPORATION ALL RIGHTS RESERVED	DATE: 0000000 BY: TECH ELECTRONICS CORPORATION ALL RIGHTS RESERVED	DATE: 0000000 BY: TECH ELECTRONICS CORPORATION ALL RIGHTS RESERVED	DATE: 0000000 BY: TECH ELECTRONICS CORPORATION ALL RIGHTS RESERVED	DATE: 0000000 BY: TECH ELECTRONICS CORPORATION ALL RIGHTS RESERVED
--	--	--	--	--	--	--	--	--	--

REVISOR		DESCRIPTION	DATE	BY	CHK
GP	00	SEE SHEET 1			



REVISED	DATE	BY	CHK	DESCRIPTION
EVERCLEAR Mini-SAS RIGHT ANGLE INTERNAL RECEPTACLE ASSEMBLY WITH UNKEYED SHELL				
STATE CASE CODE (SEE DRAWING NO) A 00779 1888861				
CUSTOMER DRAWING				

REV. NO.		REVISIONS	
DATE	BY	DESCRIPTION	APP'D.
00	GP	SEE SHEET 1	



RECOMMENDED PCB LAYOUT
 SCALE 10:1

EVERCLEAR 188-2234 INTERNAL RECEPTACLE ASSEMBLY WITH UNKEYED SHELL		TECH ELECTRONICS CORPORATION 188-2234 INTERNAL RECEPTACLE ASSEMBLY WITH UNKEYED SHELL		EVERCLEAR Mini-SAS RIGHT ANGLE INTERNAL RECEPTACLE ASSEMBLY WITH UNKEYED SHELL 188-2234 INTERNAL RECEPTACLE ASSEMBLY WITH UNKEYED SHELL	
DATE	SCALE	QUANTITY	PRICE	REVISED BY	DATE
00779	1:1	3	1888861		03/2018
CUSTOMER DRAWING			PAGE 5:1 OF 3		