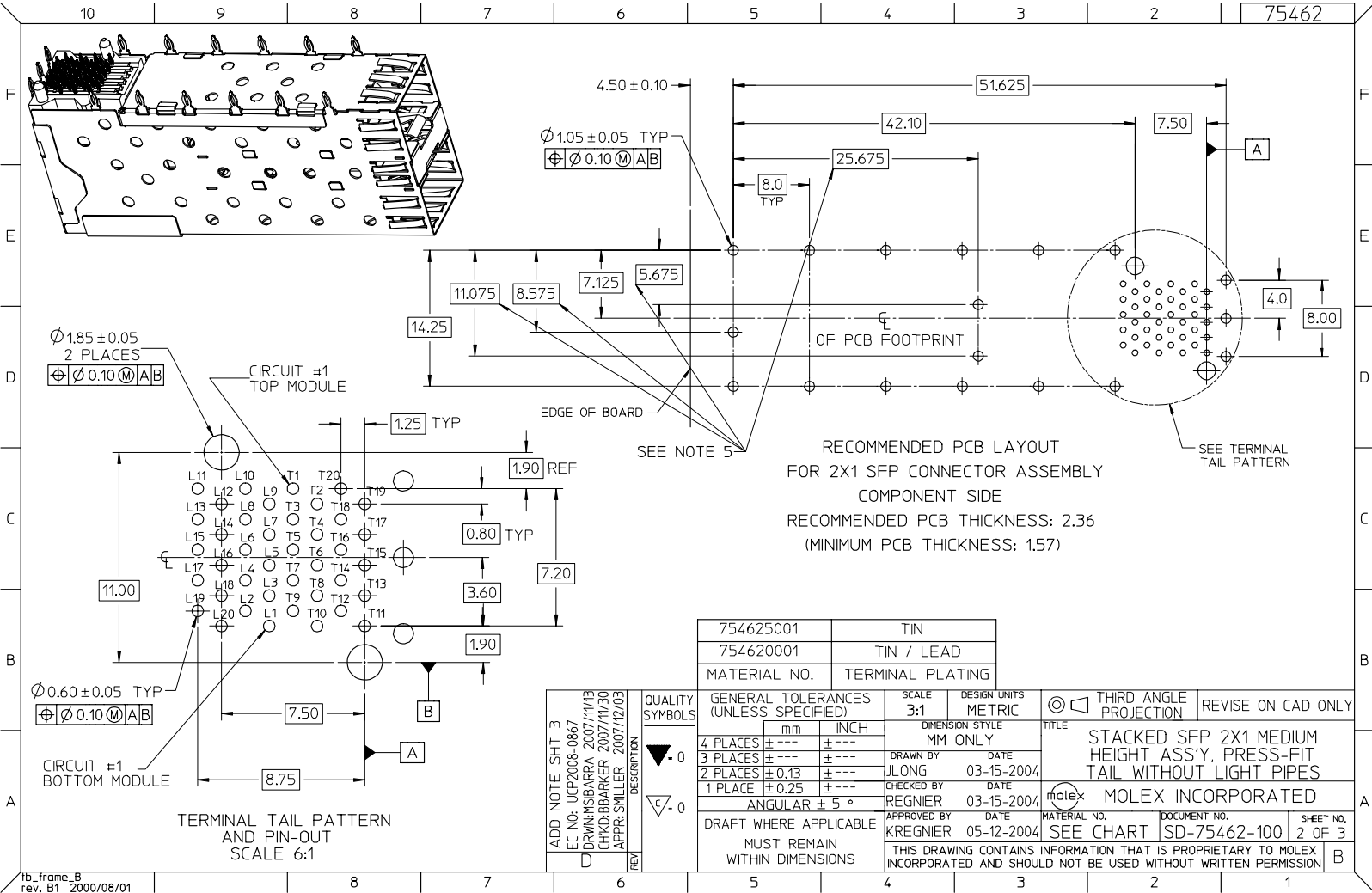


- NOTES:
- MATERIAL:
 - CAGE: NICKEL SILVER, THICKNESS: 0.25MM
 - SFP HOUSING: GLASS FILLED HIGH TEMP PLASTIC.
 - UL: 94 V-0, COLOR: BLACK
 - OVER-MOLDED TERMINALS: GLASS FILLED HIGH TEMP PLASTIC.
 - UL: 94 V-0, COLOR: BLACK
 - TERMINALS: BRASS
 - FINISH:
 - TERMINALS:
 - CONTACT AREA: 0.76 MICRONS MIN. HARD GOLD
 - OVER 1.27 MICRONS MIN. NICKEL.
 - COMPLIANT TAIL - TIN/LEAD OPTION: 0.76 - 152 MICRONS 90/10 TIN/LEAD
 - OVER 0.76 - 152 MICRONS NICKEL.
 - COMPLIANT TAIL - TIN OPTION: 0.76 - 152 MICRONS TIN
 - OVER 0.76 - 152 MICRONS NICKEL.
 - REFER TO PS-75310-001 FOR ALL ELECTRICAL, MECHANICAL AND ENVIRONMENTAL SPECIFICATIONS.
 - REFER TO PK-75462-001 FOR ALL PACKAGING SPECIFICATIONS.
 - THE CURVED TAILS THAT GO INTO THE HOLES LOCATED BY THESE DIMENSIONS ARE BEING ELIMINATED. TO ACCOMMODATE THIS CONVERSION, IT IS RECOMMENDED THAT BOARDS DESIGNED TO THIS PRINT REVISION INCLUDE THESE HOLES.

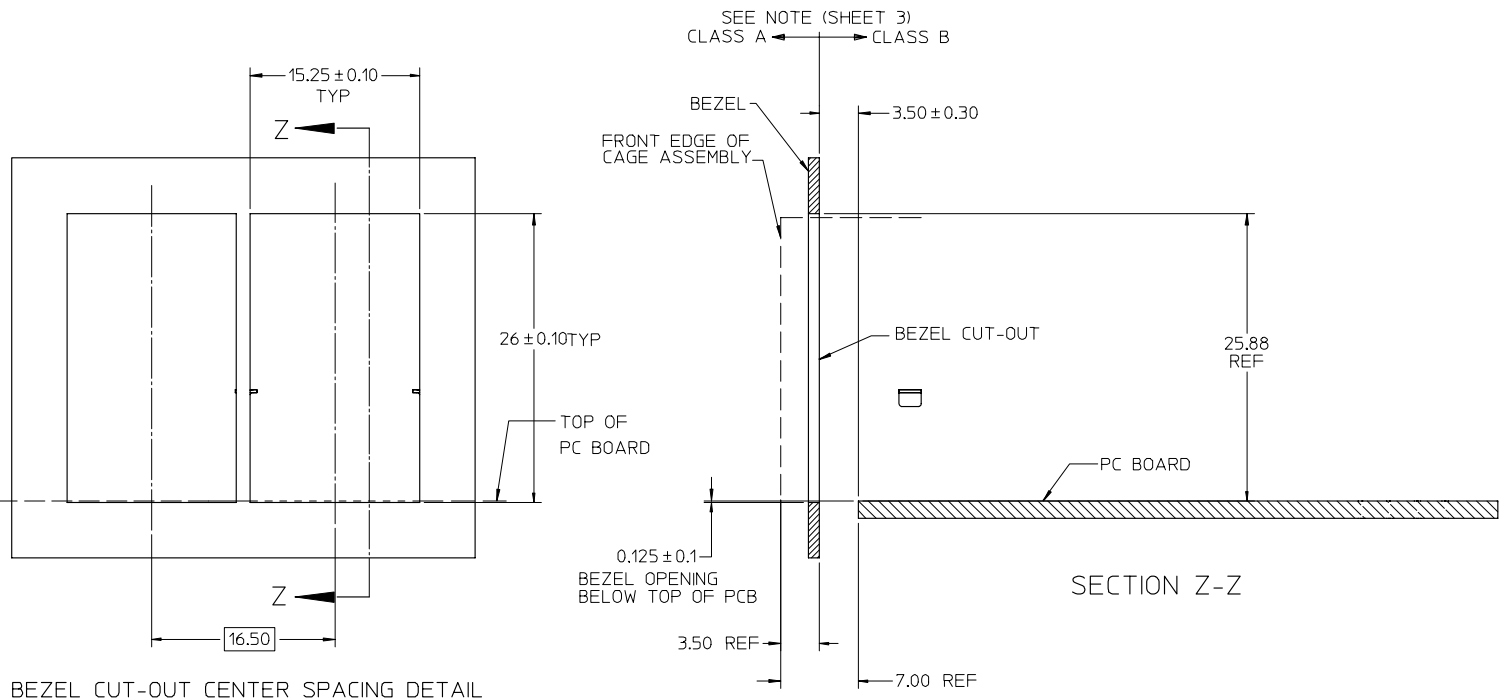
ADD NOTE SHT 3	DESCRIPTION	QUALITY SYMBOLS		GENERAL TOLERANCES (UNLESS SPECIFIED)	SCALE 3:1	DESIGN UNITS METRIC	THIRD ANGLE PROJECTION	REVISE ON CAD ONLY
		4 PLACES ± --- ± ---	3 PLACES ± --- ± ---					
EC NO: UCP2008-0867	DRWN:MSBARRA 2007/11/13	CHKD:BBARKER 2007/11/30	APPR:SMILLER 2007/12/03	ANGULAR ± 5 °	DRAWN BY JLONG	DATE 03-15-2004	STACKED SFP 2X1 MEDIUM HEIGHT ASSY, PRESS-FIT TAIL WITHOUT LIGHT PIPES	
				DRAFT WHERE APPLICABLE MUST REMAIN WITHIN DIMENSIONS	CHECKED BY REGNIER	DATE 03-15-2004	MOLEX INCORPORATED	
					APPROVED BY KREGNIER	DATE 05-12-2004	MATERIAL NO.	DOCUMENT NO. SD-75462-100
					THIS DRAWING CONTAINS INFORMATION THAT IS PROPRIETARY TO MOLEX INCORPORATED AND SHOULD NOT BE USED WITHOUT WRITTEN PERMISSION			SHEET NO. 1 OF 3



RECOMMENDED PCB LAYOUT
FOR 2X1 SFP CONNECTOR ASSEMBLY
COMPONENT SIDE
RECOMMENDED PCB THICKNESS: 2.36
(MINIMUM PCB THICKNESS: 1.57)

754625001	TIN
754620001	TIN / LEAD
MATERIAL NO.	TERMINAL PLATING

ADD NOTE SHT 3 EC NO: UCP2008-0867 DRWNS/BARRA 2007/11/13 CHKD/BARKER 2007/11/30 APPR/SMILLER 2007/12/03	QUALITY SYMBOLS	GENERAL TOLERANCES (UNLESS SPECIFIED)	SCALE 3:1	DESIGN UNITS METRIC	THIRD ANGLE PROJECTION	REVISE ON CAD ONLY
	▽-0	4 PLACES ± --- ± ---	DIMENSION STYLE MM ONLY	TITLE	STACKED SFP 2X1 MEDIUM HEIGHT ASSY, PRESS-FIT TAIL WITHOUT LIGHT PIPES	
	▽-0	3 PLACES ± --- ± ---	DRAWN BY JLONG DATE 03-15-2004	CHECKED BY REGNIER DATE 03-15-2004	MOLEX INCORPORATED	
	▽-0	2 PLACES ± 0.13 ± ---	APPROVED BY KREGNIER DATE 05-12-2004	MATERIAL NO. SD-75462-100 DOCUMENT NO. 2 OF 3 SHEET NO. 2 OF 3		
REV	DESCRIPTION	DRAFT WHERE APPLICABLE MUST REMAIN WITHIN DIMENSIONS	THIS DRAWING CONTAINS INFORMATION THAT IS PROPRIETARY TO MOLEX INCORPORATED AND SHOULD NOT BE USED WITHOUT WRITTEN PERMISSION			



BEZEL CUT-OUT CENTER SPACING DETAIL
BEZEL THICKNESS 0.8 - 2.6

NOTE:
PART COMPLIES WITH COSMETIC SPECIFICATION PS-45499-002.
SEE SECTION Z-Z FOR SURFACE CLASSIFICATIONS.
UNDERSIDE OF CAGE COMPLIES WITH CLASS 'C'.

ADD NOTE EC NO: UCP2008-0867 DRWN:MSBARRA 2007/11/13 CHKD:BBARKER 2007/11/30 APPR:SMILLER 2007/12/03	QUALITY SYMBOLS	GENERAL TOLERANCES (UNLESS SPECIFIED)	SCALE 3:1	DESIGN UNITS METRIC	THIRD ANGLE PROJECTION	REVISE ON CAD ONLY
	DESCRIPTION ▽ - 0 ▽ - 0	4 PLACES ± --- ± ---	mm INCH	DIMENSION STYLE MM ONLY		TITLE STACKED SFP 2X1 MEDIUM HEIGHT ASSY, PRESS-FIT TAIL WITHOUT LIGHT PIPES
		3 PLACES ± --- ± ---		DRAWN BY JLONG	DATE 03-15-2004	
		2 PLACES ± 0.13 ± ---		CHECKED BY REGNIER	DATE 03-15-2004	MOLEX INCORPORATED MATERIAL NO. DOCUMENT NO. SHEET NO.
1 PLACE ± 0.25 ± ---		APPROVED BY KREGNIER	DATE 05-12-2004	SD-75462-100 3 OF 3		
REV D	DESCRIPTION	DRAFT WHERE APPLICABLE MUST REMAIN WITHIN DIMENSIONS	THIS DRAWING CONTAINS INFORMATION THAT IS PROPRIETARY TO MOLEX INCORPORATED AND SHOULD NOT BE USED WITHOUT WRITTEN PERMISSION			