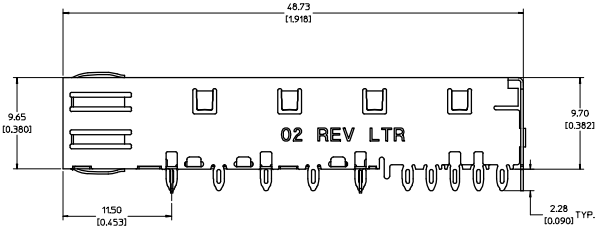
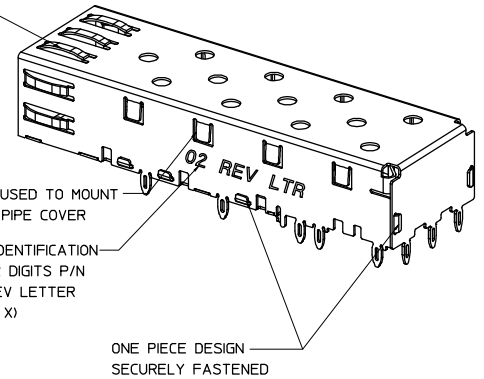


SPRING FINGER GASKET WITH TWO POINTS OF CONTACT. COMPLIES WITH (SFP) MSA BOARD AND BEZEL LOCATIONS.



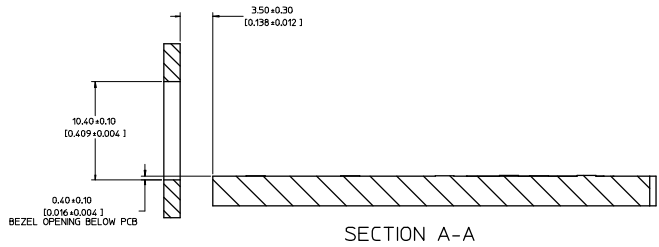
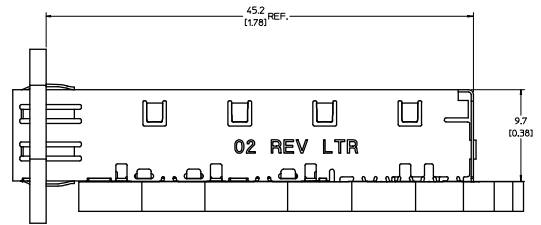
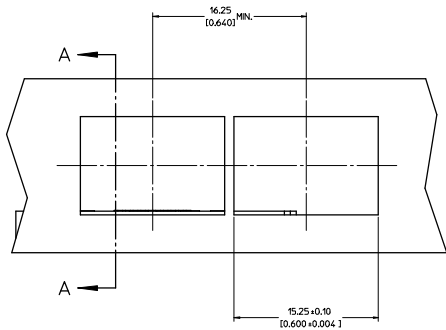
NOTES:

- PRESS FIT LEGS, 0.090 INCHES LONG.
157 [0.062] MINIMUM PCB THICKNESS.
- THIS CAGE IS FOR SINGLE SIDED USE ONLY.
- CAN BE USED WITH THE FOLLOWING LIGHT PIPE PART NUMBERS:

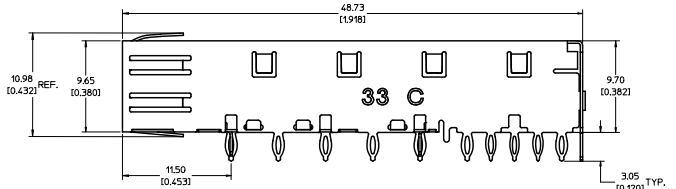
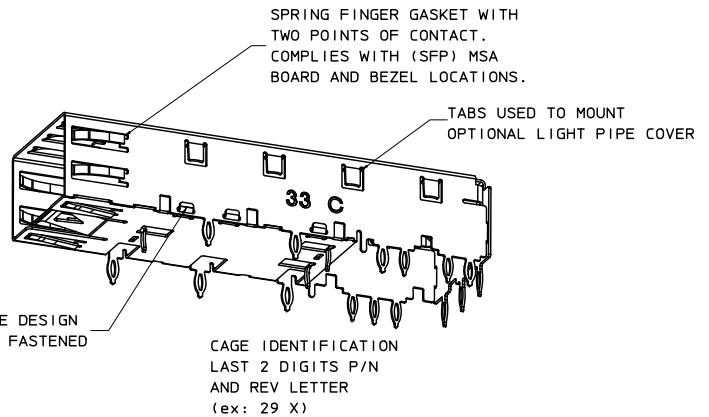
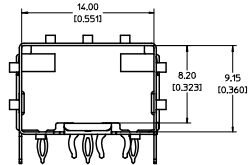
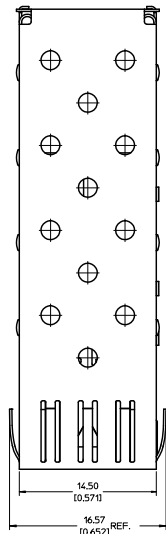
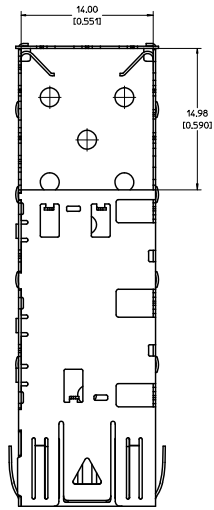
747260001 - LIGHT PIPE FROM BACK TO TOP
(REFER TO DOCUMENT SD-74726-001)

747260002 - LIGHT PIPE FROM SIDE TO TOP
(REFER TO DOCUMENT SD-74726-002)
- MATERIAL: COPPER ALLOY
PLATING: PRE-PLATED WITH NICKEL
- THIS PART MEETS THE RESTRICTION OF HAZARDOUS SUBSTANCES IN ELECTRICAL AND ELECTRONIC EQUIPMENT (ROHS) DIRECTIVE (2002/95/EC).

UPDATED VIEWS: ELC INC. 11/20/06-02/07 C: DRAWING COX 2007/12/07 CHKD: 2007/12/07 APPR: MUMFORD 2007/12/07	QUALITY SYMBOLS	GENERAL TOLERANCES (UNLESS SPECIFIED)	DIMENSION STYLE	SCALE	DESIGN UNITS	THIRD ANGLE PROJECTION																																	
	$\nabla=0$ $\nabla=0.05$	<table border="1"> <thead> <tr> <th></th> <th>mm</th> <th>INCH</th> </tr> </thead> <tbody> <tr> <td>4 PLACES ±</td> <td>±</td> <td>±</td> </tr> <tr> <td>3 PLACES ±</td> <td>±.005</td> <td>±</td> </tr> <tr> <td>2 PLACES ±</td> <td>±.01</td> <td>±</td> </tr> <tr> <td>1 PLACE ±</td> <td>±.025</td> <td>±</td> </tr> </tbody> </table>		mm	INCH	4 PLACES ±	±	±	3 PLACES ±	±.005	±	2 PLACES ±	±.01	±	1 PLACE ±	±.025	±	<table border="1"> <thead> <tr> <th>MM/IN</th> <th>DATE</th> <th>TITLE</th> </tr> </thead> <tbody> <tr> <td>CCOX</td> <td>2007/01/18</td> <td>SFP ONE PIECE CAGE PRESS-FIT (0.090 LEGS)</td> </tr> <tr> <td>CHECKED BY</td> <td>DATE</td> <td></td> </tr> <tr> <td>RMAHMOOD</td> <td>2007/01/18</td> <td></td> </tr> <tr> <td>APPROVED BY</td> <td>DATE</td> <td></td> </tr> <tr> <td>RMAHMOOD</td> <td>2007/01/18</td> <td></td> </tr> </tbody> </table>	MM/IN	DATE	TITLE	CCOX	2007/01/18	SFP ONE PIECE CAGE PRESS-FIT (0.090 LEGS)	CHECKED BY	DATE		RMAHMOOD	2007/01/18		APPROVED BY	DATE		RMAHMOOD	2007/01/18		5:1	METRIC	
		mm	INCH																																				
	4 PLACES ±	±	±																																				
3 PLACES ±	±.005	±																																					
2 PLACES ±	±.01	±																																					
1 PLACE ±	±.025	±																																					
MM/IN	DATE	TITLE																																					
CCOX	2007/01/18	SFP ONE PIECE CAGE PRESS-FIT (0.090 LEGS)																																					
CHECKED BY	DATE																																						
RMAHMOOD	2007/01/18																																						
APPROVED BY	DATE																																						
RMAHMOOD	2007/01/18																																						
DESCRIPTION	DRAFT WHERE APPLICABLE MUST REMAIN WITHIN DIMENSIONS	MATERIAL NO. 747370002	DOCUMENT NO. SD-74737-002	MOLEX INCORPORATED		SHEET NO. 1 OF 4																																	
REV		THIS DRAWING CONTAINS INFORMATION THAT IS PROPRIETARY TO MOLEX INCORPORATED AND SHOULD NOT BE USED WITHOUT WRITTEN PERMISSION																																					



UNPLATED VIEWS REF. VIEWS DIMENSIONS CHECKED BY: 2007/12/18 APPROVED BY: 2007/12/18	QUALITY SYMBOLS	GENERAL TOLERANCES (UNLESS SPECIFIED)	DIMENSION STYLE	SCALE	DESIGN UNITS	THIRD ANGLE PROJECTION																												
	$\nabla=0$ $\nabla=0$	<table border="1"> <thead> <tr> <th></th> <th>mm</th> <th>INCH</th> </tr> </thead> <tbody> <tr> <td>4 PLACES ± ---</td> <td>± ---</td> <td>± ---</td> </tr> <tr> <td>3 PLACES ± ---</td> <td>± 0.05</td> <td>± ---</td> </tr> <tr> <td>2 PLACES ± 0.15</td> <td>± 0.1</td> <td>± ---</td> </tr> <tr> <td>1 PLACE ± 0.25</td> <td>± ---</td> <td>± ---</td> </tr> </tbody> </table>		mm	INCH	4 PLACES ± ---	± ---	± ---	3 PLACES ± ---	± 0.05	± ---	2 PLACES ± 0.15	± 0.1	± ---	1 PLACE ± 0.25	± ---	± ---	<table border="1"> <thead> <tr> <th>MM/IN</th> <th>DATE</th> <th>TITLE</th> </tr> </thead> <tbody> <tr> <td>CCOX</td> <td>2007/01/18</td> <td rowspan="2">SFP ONE PIECE CAGE PRESS-FIT (0.090 LEGS)</td> </tr> <tr> <td>CHECKED BY</td> <td>DATE</td> </tr> <tr> <td>APPROVED BY</td> <td>DATE</td> <td rowspan="2">MOLEX INCORPORATED</td> </tr> <tr> <td>RMAHM000</td> <td>2007/01/18</td> </tr> </tbody> </table>	MM/IN	DATE	TITLE	CCOX	2007/01/18	SFP ONE PIECE CAGE PRESS-FIT (0.090 LEGS)	CHECKED BY	DATE	APPROVED BY	DATE	MOLEX INCORPORATED	RMAHM000	2007/01/18	5:1	METRIC	
		mm	INCH																															
	4 PLACES ± ---	± ---	± ---																															
3 PLACES ± ---	± 0.05	± ---																																
2 PLACES ± 0.15	± 0.1	± ---																																
1 PLACE ± 0.25	± ---	± ---																																
MM/IN	DATE	TITLE																																
CCOX	2007/01/18	SFP ONE PIECE CAGE PRESS-FIT (0.090 LEGS)																																
CHECKED BY	DATE																																	
APPROVED BY	DATE	MOLEX INCORPORATED																																
RMAHM000	2007/01/18																																	
DESCRIPTION	ANGULAR ± 1°	DRAFT WHERE APPLICABLE MUST REMAIN WITHIN DIMENSIONS	MATERIAL NO. 747370002	DOCUMENT NO. SD-74737-002	SHEET NO. 3 OF 4																													
REF			THIS DRAWING CONTAINS INFORMATION THAT IS PROPRIETARY TO MOLEX INCORPORATED AND SHOULD NOT BE USED WITHOUT WRITTEN PERMISSION																															



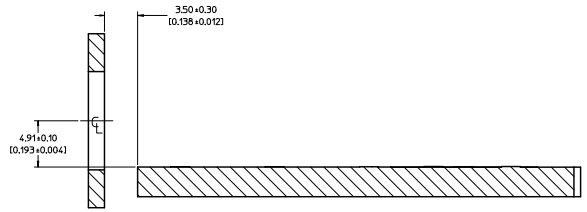
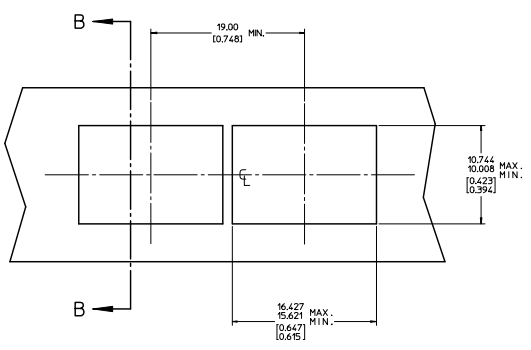
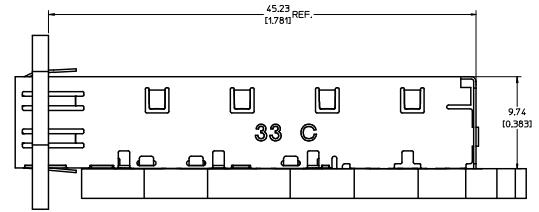
- NOTES:
- PRESS FIT LEGS, 0.120 INCHES LONG.
1.57 [0.062] MINIMUM PCB THICKNESS.
 - THIS CAGE IS FOR SINGLE SIDED USE ONLY.
 - CAN BE USED WITH THE FOLLOWING LIGHT PIPE PART NUMBERS:
747260001 - LIGHT PIPE FROM BACK TO TOP
(REFER TO DOCUMENT SD-74726-001)
747260002 - LIGHT PIPE FROM SIDE TO TOP
(REFER TO DOCUMENT SD-74726-002)
 - MATERIAL: COPPER ALLOY
PLATING: PRE-PLATED WITH NICKEL
 - THIS PART MEETS THE RESTRICTION OF HAZARDOUS SUBSTANCES IN ELECTRICAL AND ELECTRONIC EQUIPMENT (ROHS) DIRECTIVE (2002/95/EC).

REV DWS CAGE REV E.M. 2009-09-28 C. DRWNSKREEST 2010/04/27 CHKXKJ ANITA APPR. J. ANITA	QUALITY SYMBOLS	GENERAL TOLERANCES (UNLESS SPECIFIED)	DIMENSION STYLE	SCALE	DESIGN UNITS	THIRD ANGLE PROJECTION
	$\nabla=0$ $\nabla=0.005$	(UNLESS SPECIFIED) 4 PLACES ± 0.005 INCH 3 PLACES ± 0.005 INCH 2 PLACES ± 0.01 INCH 1 PLACE ± 0.25 INCH ANGULAR ± 1°	MM/IN	5:1	METRIC	<input checked="" type="checkbox"/> THIRD ANGLE PROJECTION
	DRAWN BY: JRESENDE CHECKED BY: JRESENDE APPROVED BY: JRESENDE	DATE: 2009/09/28 DATE: 2009/09/28 DATE: 2009/09/28				SFP ONE PIECE CAGE PRESS-FIT (0.120 LEGS) W/ MODIFIED LATCH TANG
	MATERIAL NO. 747370033 DOCUMENT NO. SD-74737-0033	MOLEX INCORPORATED				SHEET NO. 1 OF 3

DRAFT WHERE APPLICABLE MUST REMAIN WITHIN DIMENSIONS

THIS DRAWING CONTAINS INFORMATION THAT IS PROPRIETARY TO MOLEX INCORPORATED AND SHOULD NOT BE USED WITHOUT WRITTEN PERMISSION

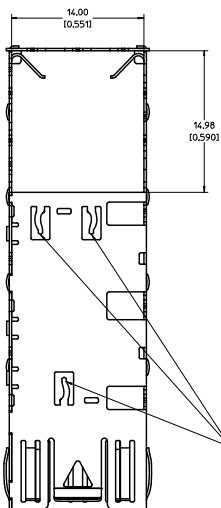
20 19 18 17 16 15 14 13 12 11 10 9 8 7 6 5 4 3 2 1



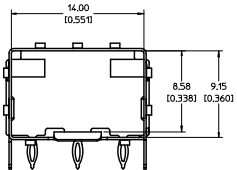
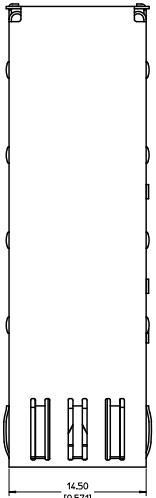
SECTION B-B

REV DIMS: CAGE REV REV NO: 200-005 CHK: CHYKDX/JANITA APPR: J. JANITA DATE: 2010/04/27 2010/05/04	QUALITY SYMBOLS	GENERAL TOLERANCES (UNLESS SPECIFIED)	DIMENSION STYLE	SCALE	DESIGN UNITS	THIRD ANGLE PROJECTION																
	▽ 0 ▽ 0	<table border="1"> <thead> <tr> <th></th> <th>mm</th> <th>INCH</th> </tr> </thead> <tbody> <tr> <td>4 PLACES ± ---</td> <td>± ---</td> <td>± ---</td> </tr> <tr> <td>3 PLACES ± ---</td> <td>± 0.005</td> <td>± 0.001</td> </tr> <tr> <td>2 PLACES ± 0.13</td> <td>± 0.01</td> <td>± 0.004</td> </tr> <tr> <td>1 PLACE ± 0.25</td> <td>± ---</td> <td>± ---</td> </tr> </tbody> </table>		mm	INCH	4 PLACES ± ---	± ---	± ---	3 PLACES ± ---	± 0.005	± 0.001	2 PLACES ± 0.13	± 0.01	± 0.004	1 PLACE ± 0.25	± ---	± ---	MM/IN 5:1 METRIC	DRAWN BY: JRESENDE DATE: 2009/09/28 CHECKED BY: JRESENDE DATE: 2009/09/28 APPROVED BY: JRESENDE DATE: 2009/09/28	TITLE: SFP ONE PIECE CAGE PRESS-FIT (0.120 LEGS) W/ MODIFIED LATCH TANG	MOLEX INCORPORATED	SHEET NO. 3 OF 3
		mm	INCH																			
	4 PLACES ± ---	± ---	± ---																			
3 PLACES ± ---	± 0.005	± 0.001																				
2 PLACES ± 0.13	± 0.01	± 0.004																				
1 PLACE ± 0.25	± ---	± ---																				
DRAFT WHERE APPLICABLE MUST REMAIN WITHIN DIMENSIONS	MATERIAL NO. 747370033	DOCUMENT NO. SD-74737-0033	THIS DRAWING CONTAINS INFORMATION THAT IS PROPRIETARY TO MOLEX INCORPORATED AND SHOULD NOT BE USED WITHOUT WRITTEN PERMISSION																			
REV	DESCRIPTION																					

19 18 17 16 15 14 13 12 11 10 9 8 7 6 5 4 3 2 1



EMI PINS REMAIN FLAT. NO THROUGH HOLES IN PCB NECESSARY.

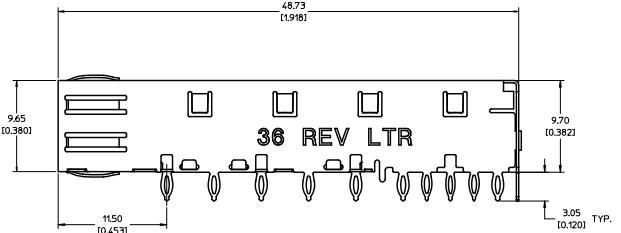
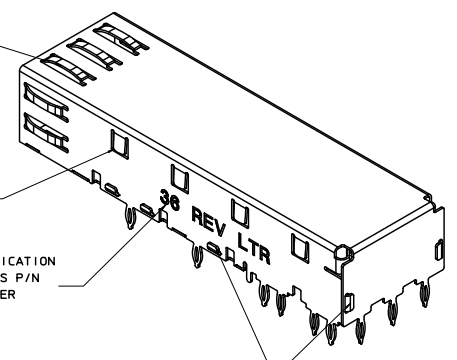


SPRING FINGER GASKET WITH TWO POINTS OF CONTACT. COMPLIES WITH (SFP) MSA BOARD AND BEZEL LOCATIONS.

TABS USED TO MOUNT LIGHT PIPE COVER

CAGE IDENTIFICATION LAST 2 DIGITS P/N AND REV LETTER (ex: 36 X)

ONE PIECE DESIGN SECURELY FASTENED



- NOTES:
- PRESS FIT LEGS, 0.120 INCHES LONG. 1.57 [0.062] MINIMUM PCB THICKNESS.
 - THIS CAGE IS FOR SINGLE SIDED USE ONLY.
 - CAN BE USED WITH THE FOLLOWING LIGHT PIPE PART NUMBERS:

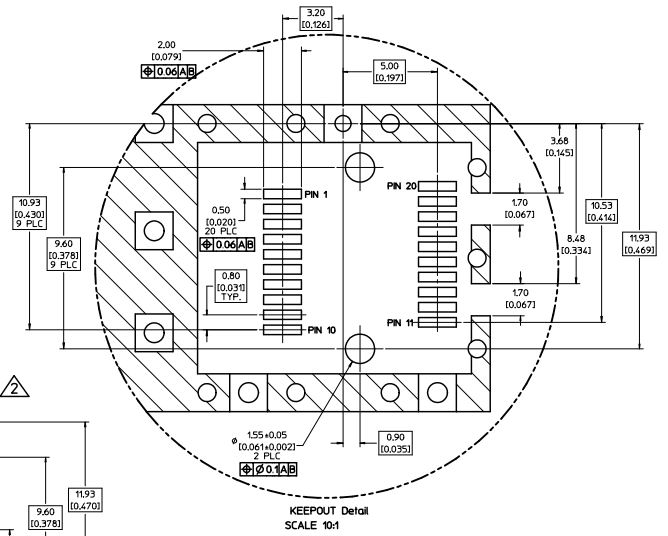
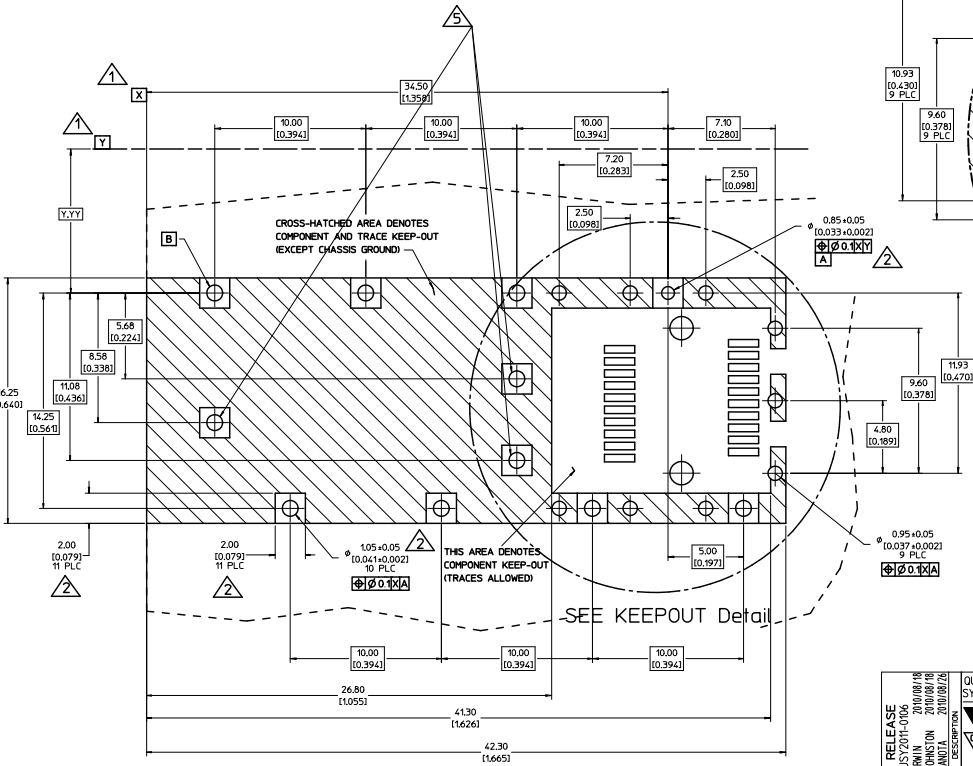
747260001 - LIGHT PIPE FROM BACK TO TOP (REFER TO DOCUMENT SD-74726-001)

747260002 - LIGHT PIPE FROM SIDE TO TOP (REFER TO DOCUMENT SD-74726-002)

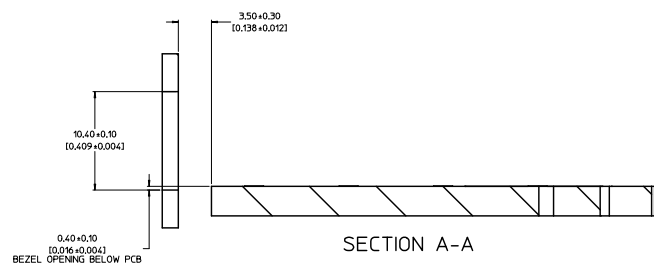
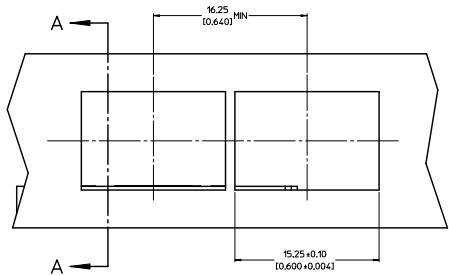
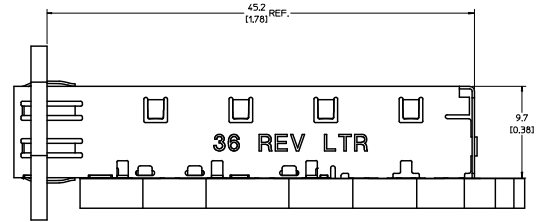
- MATERIAL: COPPER ALLOY
PLATING: PRE-PLATED WITH NICKEL
- THIS PART MEETS THE RESTRICTION OF HAZARDOUS SUBSTANCES IN ELECTRICAL AND ELECTRONIC EQUIPMENT (ROHS) DIRECTIVE (2002/95/EC).

INITIAL RELEASE DATE: 2010/08/18 DRAWN BY: JERWIN CHECKED BY: A. JOHNSTON APPROVED BY: J. ANOTA DATE: 2010/08/24	QUALITY SYMBOLS	GENERAL TOLERANCES (UNLESS SPECIFIED)	DIMENSION STYLE	SCALE	DESIGN UNITS	THIRD ANGLE PROJECTION															
	$\nabla=0$ $\nabla=0$	<table border="1"> <thead> <tr> <th></th> <th>mm</th> <th>INCH</th> </tr> </thead> <tbody> <tr> <td>4 PLACES ±</td> <td>± 0.10</td> <td>± 0.004</td> </tr> <tr> <td>3 PLACES ±</td> <td>± 0.05</td> <td>± 0.002</td> </tr> <tr> <td>2 PLACES ±</td> <td>± 0.13</td> <td>± 0.01</td> </tr> <tr> <td>1 PLACE ±</td> <td>± 0.25</td> <td>± 0.01</td> </tr> </tbody> </table>		mm	INCH	4 PLACES ±	± 0.10	± 0.004	3 PLACES ±	± 0.05	± 0.002	2 PLACES ±	± 0.13	± 0.01	1 PLACE ±	± 0.25	± 0.01	MM/IN	5:1	METRIC	
		mm	INCH																		
	4 PLACES ±	± 0.10	± 0.004																		
3 PLACES ±	± 0.05	± 0.002																			
2 PLACES ±	± 0.13	± 0.01																			
1 PLACE ±	± 0.25	± 0.01																			
DRAFT WHERE APPLICABLE MUST REMAIN WITHIN DIMENSIONS	MATERIAL NO. 747370036	DRAWN BY: JERWIN DATE: 2010/08/18	TITLE: SFP ONE PIECE CAGE PRESS-FIT (0.120 LEGS) NO EMI PINS	DOCUMENT NO. SD-74737-0036	SHEET NO. 1 OF 4																
		CHECKED BY: A. JOHNSTON DATE: 2010/08/18																			

- DATUM AND BASIC DIMENSIONS ESTABLISHED BY CUSTOMER.
- PADS AND VIAS ARE CHASSIS GROUND.
- HOLE LAYOUT SHOWN IS FOR SINGLE SIDED MOUNTING ONLY.
- CONNECTOR PAD LAYOUT PER SFP MSA, WILL ACCOMMODATE MOLEX CONNECTOR SERIES 74441 OR EQUIVALENT.
- THESE HOLES OPTIONAL.



INITIAL RELEASE DATE: 2010/08/18 BY: JERWIN CHECKED BY: A. JOHNSTON APPROVED BY: K. JANOTA	QUALITY SYMBOLS	GENERAL TOLERANCES (UNLESS SPECIFIED)	DIMENSION STYLE	SCALE	DESIGN UNITS	THIRD ANGLE PROJECTION
	∇ 0 ∇ 0.1 ∇ 0.25	4 PLACES ± --- ± --- 3 PLACES ± --- ± 0.005 2 PLACES ± 0.13 ± 0.1 1 PLACE ± 0.25 ± --- ANGULAR ± 1 °	MM/IN	8:1	METRIC	\odot \triangleleft
	DRAWN BY: JERWIN CHECKED BY: A. JOHNSTON APPROVED BY: K. JANOTA	DATE: 2010/08/18 DATE: 2010/08/18 DATE: 2010/08/26	TITLE: SFP ONE PIECE CAGE PRESS-FIT (0.120 LEGS) NO EMI PINS MOLEX INCORPORATED	MATERIAL NO.: 747370036 DOCUMENT NO.: SD-74737-0036	SHEET NO. 2 OF 4	
	DRAFT WHERE APPLICABLE MUST REMAIN WITHIN DIMENSIONS THIS DRAWING CONTAINS INFORMATION THAT IS PROPRIETARY TO MOLEX INCORPORATED AND SHOULD NOT BE USED WITHOUT WRITTEN PERMISSION					



INITIAL RELEASE E.C. UNLESS SPECIFIED DRAWN BY: JERWIN 2010/08/18 CHECKED BY: AJOHNSTON 2010/08/18 APPROVED BY: KJANOTA 2010/08/26 REV DESCRIPTION	QUALITY SYMBOLS	GENERAL TOLERANCES (UNLESS SPECIFIED)	DIMENSION STYLE	SCALE	DESIGN UNITS	THIRD ANGLE PROJECTION
	▽=0 ▽=0.05	4 PLACES ± --- ± --- 3 PLACES ± --- ± 0.005 2 PLACES ± 0.13 ± 0.01 1 PLACE ± 0.25 ± --- ANGULAR ± 1 °	MM/IN	5:1	METRIC	
		DRAFT WHERE APPLICABLE MUST REMAIN WITHIN DIMENSIONS				
			MATERIAL NO. 747370036	DOCUMENT NO. SD-74737-0036	SHEET NO. 3 OF 4	
THIS DRAWING CONTAINS INFORMATION THAT IS PROPRIETARY TO MOLEX INCORPORATED AND SHOULD NOT BE USED WITHOUT WRITTEN PERMISSION						

