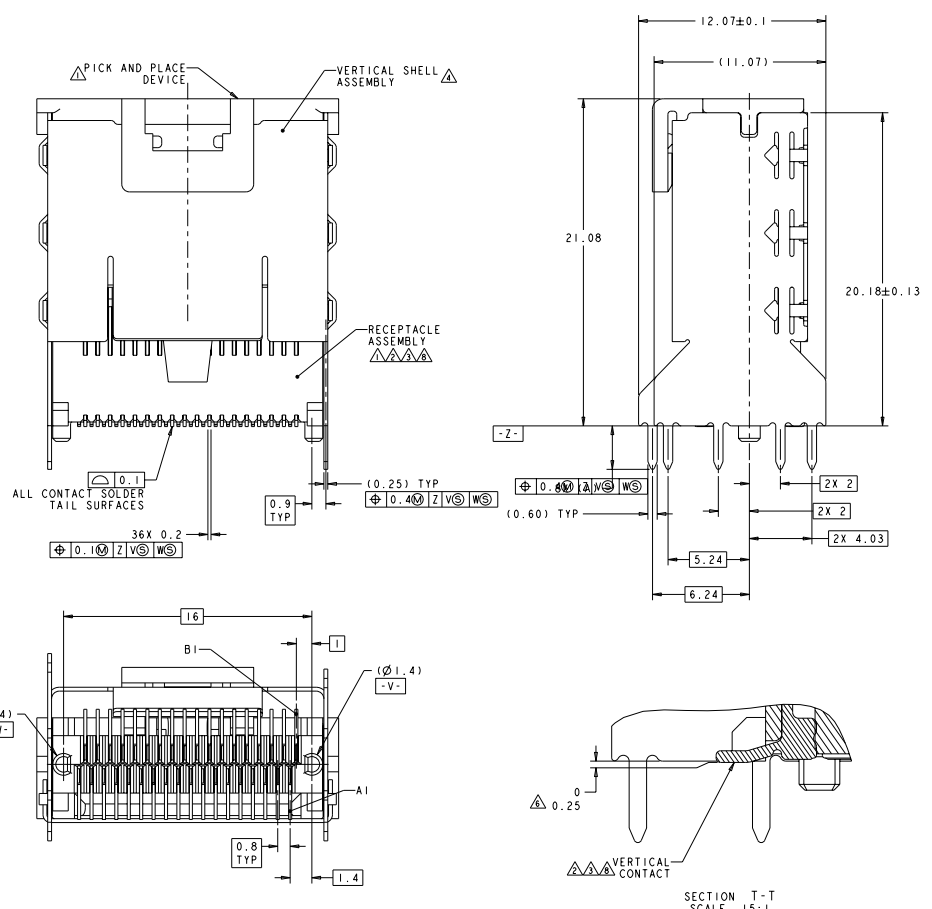
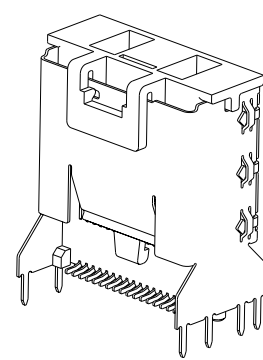


REV	DATE	DESCRIPTION	BY	CHK	APP
A		RELEASED PER ECO-08-011133			



- △ MATERIAL: LCP, BLACK.
- △ MATERIAL: PHOSPHOR BRONZE PER ASTM B 103.
- △ FINISH: 0.76µm MIN GOLD PLATE PER ASTM B 488, APPLIES TO INTERFACE AREA AND 2.03µm MIN TIN PLATE SOLDER TAILS, ALL OVER 3.81µm MIN NICKEL PLATE PER QQ-N-290.
- △ MATERIAL: NICKEL-SILVER PER ASTM B 122.
- △ DATUM AND BASIC DIMENSION ESTABLISHED BY CUSTOMER.
- △ CONTACT TAILS TO BE 0.25 MAX BELOW FLUSH WITH DATUM [-Z-].
- 7. REFER TO CUSTOMER DRAWING 1888020 FOR CONNECTOR DETAILS.
- △ FINISH: 0.38µm MIN GOLD PLATE PER ASTM B 488, APPLIES TO INTERFACE AREA AND 2.03µm MIN TIN PLATE SOLDER TAILS, ALL OVER 3.81µm MIN NICKEL PLATE PER QQ-N-290.



1888863-4
SCALE 6:1

FINISH	DIM A	POSN	PART NUMBER
△	3.50	36	1-1888863-0
△	2.80	36	1888863-9
△	3.50	36	1888863-B
△	2.80	36	1888863-4

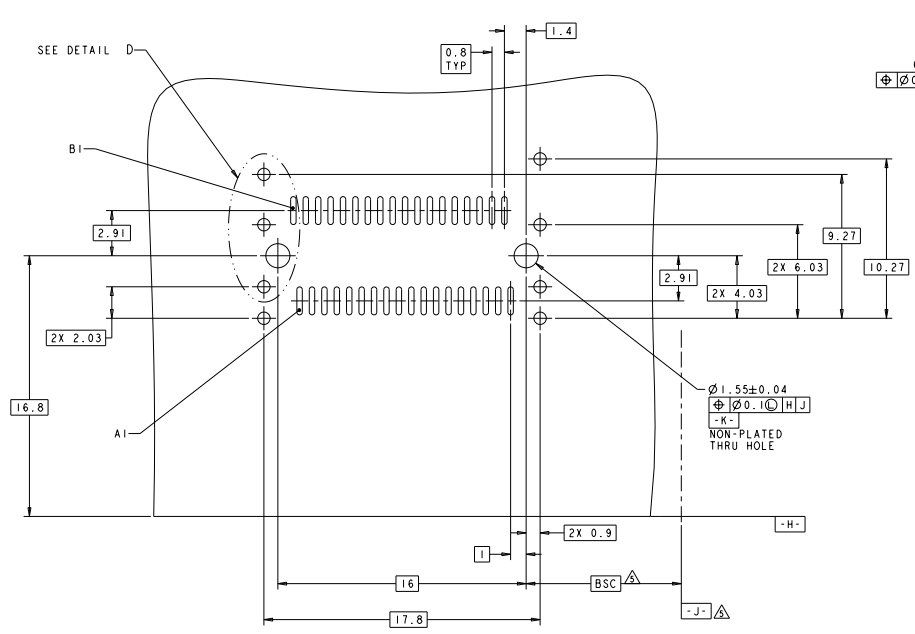
REV	DATE	DESCRIPTION	BY	CHK	APP
A		RELEASED PER ECO-08-011133			

DATE: 08/24/2010	BY: TFCB ELECTRONICS CORPORATION	ALL RIGHTS RESERVED
DATE: 08/24/2010	BY: TFCB ELECTRONICS CORPORATION	ALL RIGHTS RESERVED
DATE: 08/24/2010	BY: TFCB ELECTRONICS CORPORATION	ALL RIGHTS RESERVED

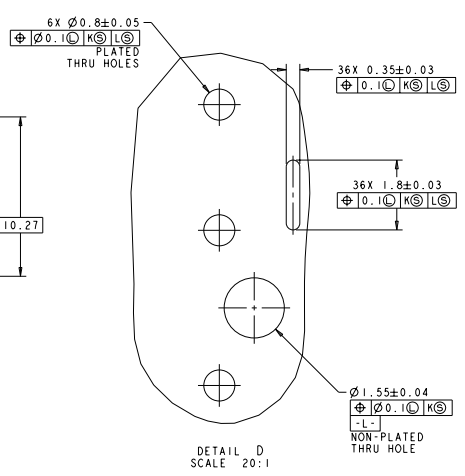
DATE: 08/24/2010	BY: TFCB ELECTRONICS CORPORATION	ALL RIGHTS RESERVED
DATE: 08/24/2010	BY: TFCB ELECTRONICS CORPORATION	ALL RIGHTS RESERVED
DATE: 08/24/2010	BY: TFCB ELECTRONICS CORPORATION	ALL RIGHTS RESERVED

DATE: 08/24/2010	BY: TFCB ELECTRONICS CORPORATION	ALL RIGHTS RESERVED
DATE: 08/24/2010	BY: TFCB ELECTRONICS CORPORATION	ALL RIGHTS RESERVED
DATE: 08/24/2010	BY: TFCB ELECTRONICS CORPORATION	ALL RIGHTS RESERVED

REV	DATE	DESCRIPTION	BY	CHK	APP
GP 00		SEE SHEET 1			



RECOMMENDED PCB LAYOUT
 SCALE 8:1



DETAIL D
 SCALE 20:1

EVERCLEAR 188-2234 00779	EVERCLEAR 25JAN07 EVERCLEAR 25JAN07 188-2234 00779	Tech Electronics Harrisburg, PA 17105-3600 EVERCLEAR Mini-SAS VERTICAL INTERNAL RECEPTACLE ASSEMBLY WITH UNKETCHED SHELL 00779-1888863
CUSTOMER DRAWING	SHEET 6:1 OF 2	REV A