

REVISIONS			
SYM	ZONE	ECN, ERN NO.	DATE APPRD.
A		PROPOSAL	SEP.22.08 A.G
B		UPDATED	MAR.11.09 A.G
C		ADD GENERAL TOLERANCES	JAN.06.11 A.G

MATERIAL NOTES:

PLASTIC HOUSING:
HIGH TEMPERATURE LCP
FLAMMABILITY RATING UL94V-0.

CONTACTS:

PHOSPHOR BRONZE

PLATING OPTION 2:

30µ" [0.76 µm] MIN. GOLD ON MATING AREA AND 2 µ" (0.05 µm) GOLD FLASH PLATING ON TERMINATION OVER 50µ" [1.27 µm] MIN. NICKEL UNDER LAYER.

PLATING OPTION 3:

30µ" [0.76 µm] MIN. GOLD ON MATING AREA AND 150-300 µ" (3.81-7.62 µm) MIN. LOW WHISKER MATTE TIN PLATING ON TERMINATION OVER 50µ" [1.27 µm] MIN. NICKEL UNDER LAYER.

PLATING OPTION 5:

15µ" [0.38 µm] MIN. GOLD ON MATING AREA AND 2 µ" (0.05 µm) GOLD FLASH PLATING ON TERMINATION OVER 50µ" [1.27 µm] MIN. NICKEL UNDER LAYER.

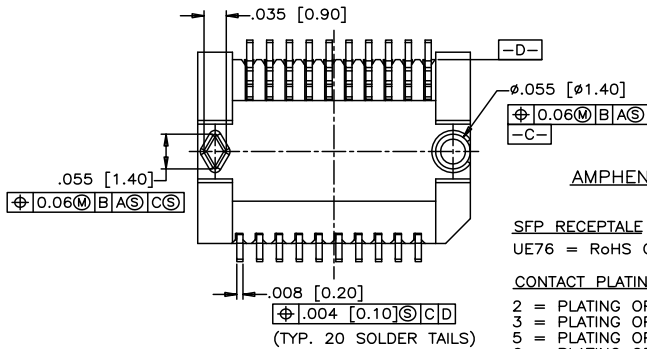
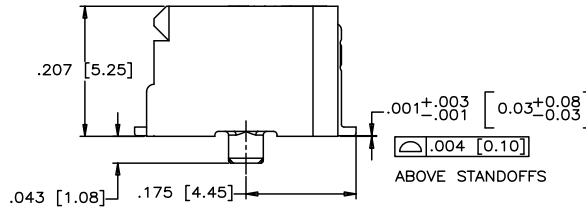
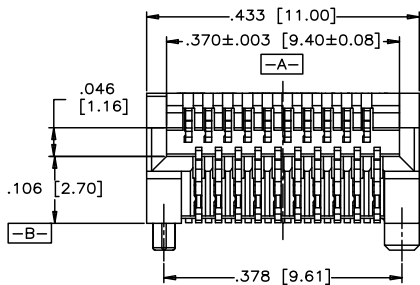
PLATING OPTION 6:

15µ" [0.38 µm] MIN. GOLD ON MATING AREA AND 150-300 µ" (3.81-7.62 µm) MIN. LOW WHISKER MATTE TIN PLATING ON TERMINATION OVER 50µ" [1.27 µm] MIN. NICKEL UNDER LAYER.

LUBRICANT OPTION: LUBRICANT CAN BE ADDED ON THE CONTACTS MATING AREA (SEE P/N FOR THE OPTION)

PACKAGING:
TAPE AND REEL.

TEMPERATURE RANGE:
-40°C TO +85°C



AMPHENOL PART NUMBER CONFIGURATION

UX76 - A 20 - X 0 0 X T

SFP RECEPTALE

UE76 = RoHS COMPLIANT

CONTACT PLATING

LUBRICANT OPTION

ON MATING AREA

0 = NO

1 = YES

2 = PLATING OPTION 2 (SEE MATERIAL NOTES)

3 = PLATING OPTION 3 (SEE MATERIAL NOTES)

5 = PLATING OPTION 5 (SEE MATERIAL NOTES)

6 = PLATING OPTION 6 (SEE MATERIAL NOTES)

DRAWN	JaneZ	DATE	SEP.22.08
CHECKED	J.SI		SEP.22.08
I. E. APPRD.			
Q. A. APPRD.			
ENG. REL. NO.	A.G		SEP.22.08

Amphenol Canada Corp.

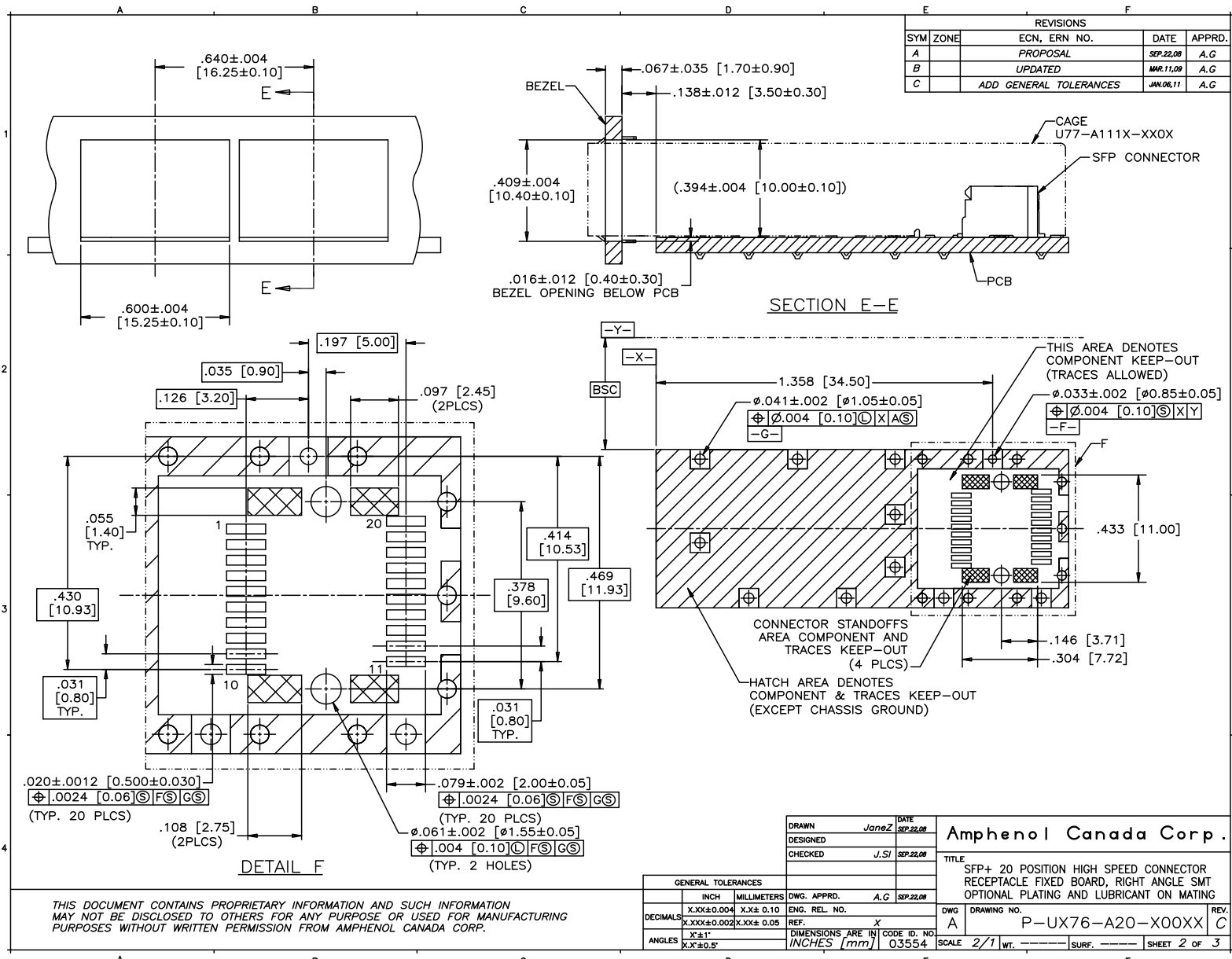
TITLE
SFP+ 20 POSITION HIGH SPEED CONNECTOR RECEPTACLE FIXED BOARD, RIGHT ANGLE SMT OPTIONAL PLATING AND LUBRICANT ON MATING

GENERAL TOLERANCES		DIMENSIONS ARE IN		CODE ID. NO.
INCH	MILLIMETERS	INCHES [mm]		0.3554
DECIMALS	X.XX±0.014 X.X±0.35			
	X.XXX±0.010 X.XX±0.25			
ANGLES	X°±1'			
	X.X°±0.5°			

DWG	A	DRAWING NO.	P-UX76-A20-X00XX	REV.	c
SCALE	4/1	WT.		SURF.	
				SHEET	1 OF 3

THIS DOCUMENT CONTAINS PROPRIETARY INFORMATION AND SUCH INFORMATION MAY NOT BE DISCLOSED TO OTHERS FOR ANY PURPOSE OR USED FOR MANUFACTURING PURPOSES WITHOUT WRITTEN PERMISSION FROM AMPHENOL CANADA CORP.

A B C D E F



REVISIONS				
SYM	ZONE	ECN, ERN NO.	DATE	APPRD.
A		PROPOSAL	SEP.22.08	A.G
B		UPDATED	MAR.11.09	A.G
C		ADD GENERAL TOLERANCES	JAN.06.11	A.G

THIS AREA DENOTES COMPONENT KEEP-OUT (TRACES ALLOWED)

THIS AREA DENOTES CONNECTOR STANDOFFS AREA COMPONENT AND TRACES KEEP-OUT (4 PLCS)

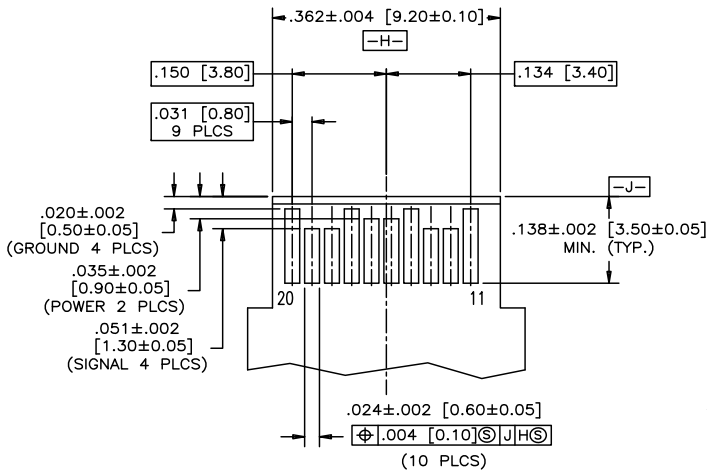
HATCH AREA DENOTES COMPONENT & TRACES KEEP-OUT (EXCEPT CHASSIS GROUND)

DRAWN		JaneZ	DATE	SEP.22.08
DESIGNED				
CHECKED		J.SJ	DATE	SEP.22.08
Amphenol Canada Corp.				
TITLE				
SFP+ 20 POSITION HIGH SPEED CONNECTOR RECEPTACLE FIXED BOARD, RIGHT ANGLE SMT OPTIONAL PLATING AND LUBRICANT ON MATING				
DWG	A	DRAWING NO.	P-UX76-A20-X00XX	
				REV. C

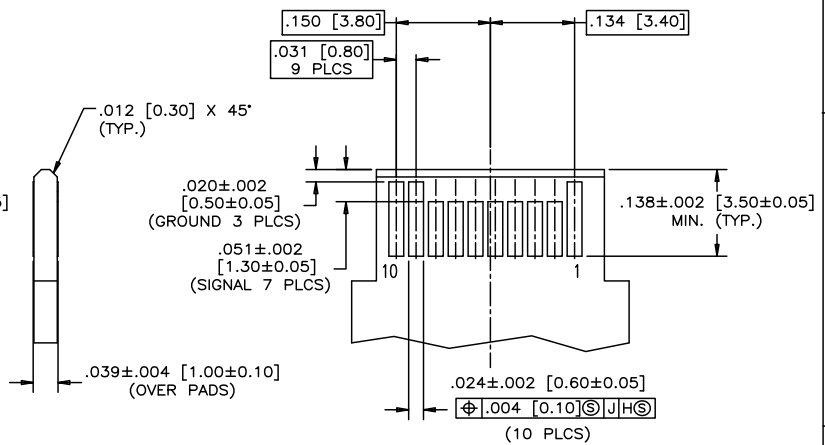
GENERAL TOLERANCES	
INCH	MILLIMETERS
X.XX±0.004	X.X±0.10
DECIMALS	
X.XXX±0.002	X.XX±0.05
ANGLES	
X°±1'	
X.X°±0.5'	

THIS DOCUMENT CONTAINS PROPRIETARY INFORMATION AND SUCH INFORMATION MAY NOT BE DISCLOSED TO OTHERS FOR ANY PURPOSE OR USED FOR MANUFACTURING PURPOSES WITHOUT WRITTEN PERMISSION FROM AMPHENOL CANADA CORP.

REVISIONS			
SYM	ZONE	ECN, ERN NO.	DATE APPRD.
A		PROPOSAL	SEP.22.08 A.G
B		UPDATED	MAR.11.09 A.G
C		ADD GENERAL TOLERANCES	JAN.06.11 A.G



TOP VIEW OF BOARD



BOTTOM VIEW OF BOARD

RECOMMENDED LAYOUT DETAIL
MATING TRANSCEIVER PCB

THIS DOCUMENT CONTAINS PROPRIETARY INFORMATION AND SUCH INFORMATION MAY NOT BE DISCLOSED TO OTHERS FOR ANY PURPOSE OR USED FOR MANUFACTURING PURPOSES WITHOUT WRITTEN PERMISSION FROM AMPHENOL CANADA CORP.

DRAWN <i>JaneZ</i> DATE <i>SEP.22.08</i>		Amphenol Canada Corp.
DESIGNED		
CHECKED <i>J.SI</i> DATE <i>SEP.22.08</i>		
GENERAL TOLERANCES		TITLE
INCH	MILLIMETERS	SFP+ 20 POSITION HIGH SPEED CONNECTOR RECEPTACLE FIXED BOARD, RIGHT ANGLE SMT OPTIONAL PLATING AND LUBRICANT ON MATING
X.XX±0.004	X.X±0.10	DWG. A
X.XXX±0.002	X.XX±0.05	DRAWING NO. P-UX76-A20-X00XX
X'±1"		SCALE 4:1
X'.X'±0.5"		WT. _____ SURF. _____ SHEET 3 OF 3