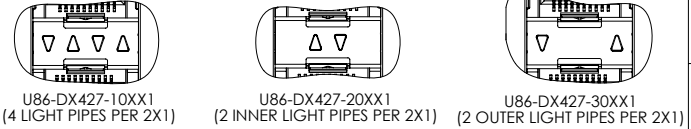


REVISIONS				
REV.	ECN	DESCRIPTION	DATE	APPROVED
G		LIGHT PIPE CONFIGURATION ADDED	MAY21/09	
E		PART NUMBERS ADDED	JUL27/09	
J		ADD 2X1 AND 2X8	AUG31/10	

**LIGHT PIPE CONFIGURATIONS**



MATERIAL: (RoHS COMPLIANT)  
 CAGE - PRESS FIT:  
 COPPER ALLOY  
 PLATING:  
 SEE AMPHENOL PART NUMBER CONFIGURATION FOR OPTIONS.  
 CONNECTOR - PRESS FIT:  
 PLASTIC HOUSING:  
 LCP,  
 FLAMMABILITY RATING UL94-0.  
 CONTACTS:  
 PHOSPHOR BRONZE  
 PLATING OPTION:  
 NICKEL 2.54 µm MIN.  
 LIGHT PIPE:  
 CLEAR POLYCARBONATE, FLAMMABILITY RATING UL94-0.  
 PACKAGING:  
 TRAY PACKAGING.  
 TEMPERATURE RANGE:  
 -40°C TO +85°C

**AMPHENOL PART NUMBER CONFIGURATION**  
 U86 - D X 4 2 7 - X 0 X X 1

**NUMBER OF PORTS**  
 1 = 2X1  
 2 = 2X2  
 4 = 2X4  
 6 = 2X6  
 8 = 2X8

**LIGHT PIPE CONFIGURATIONS**  
 1 = 4 LIGHT PIPES PER 2X1  
 2 = 2 INNER LIGHT PIPES PER 2X1  
 3 = 2 OUTER LIGHT PIPES PER 2X1

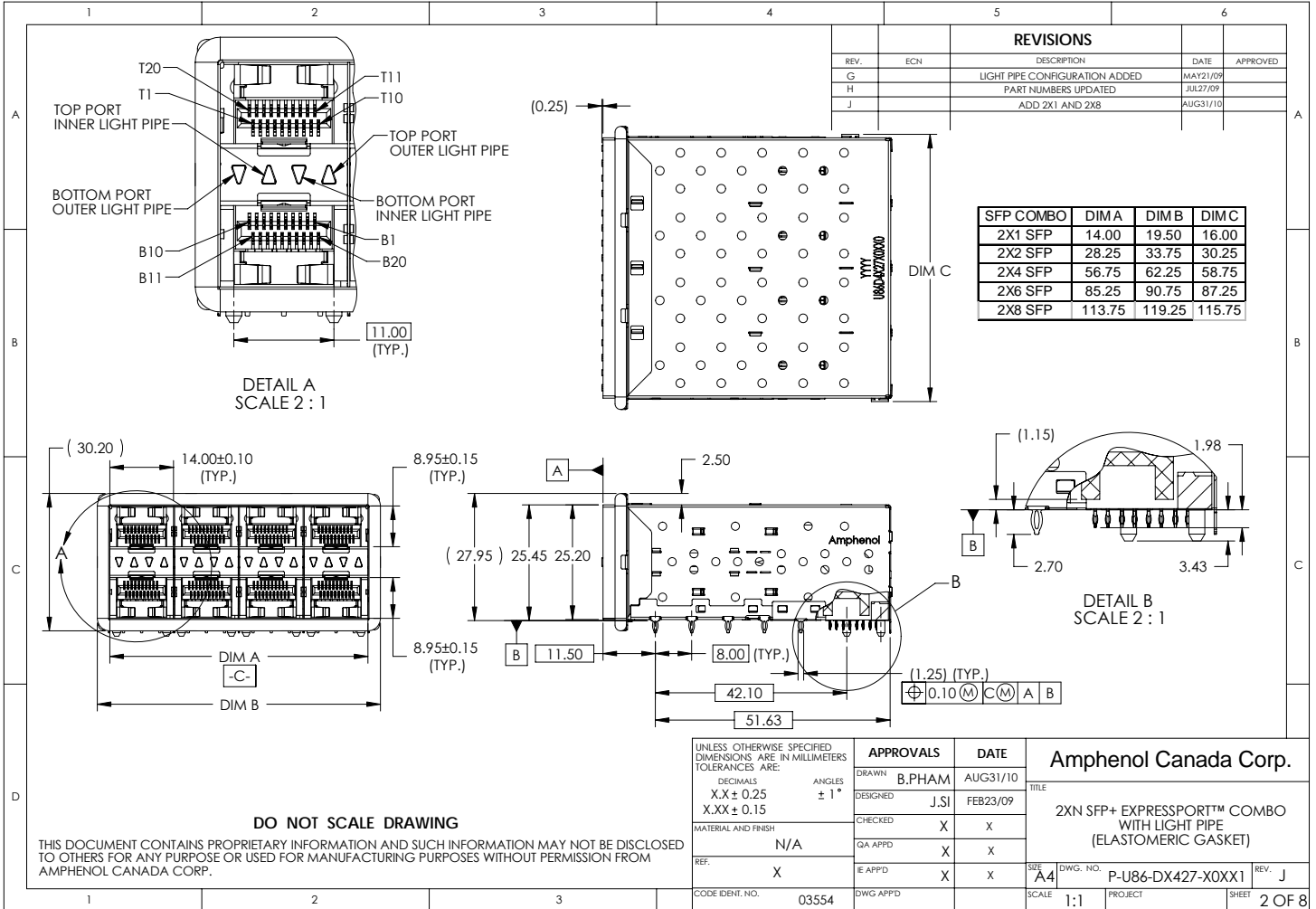
**PACKAGING**  
 1 = TRAY  
 2 = NICKEL

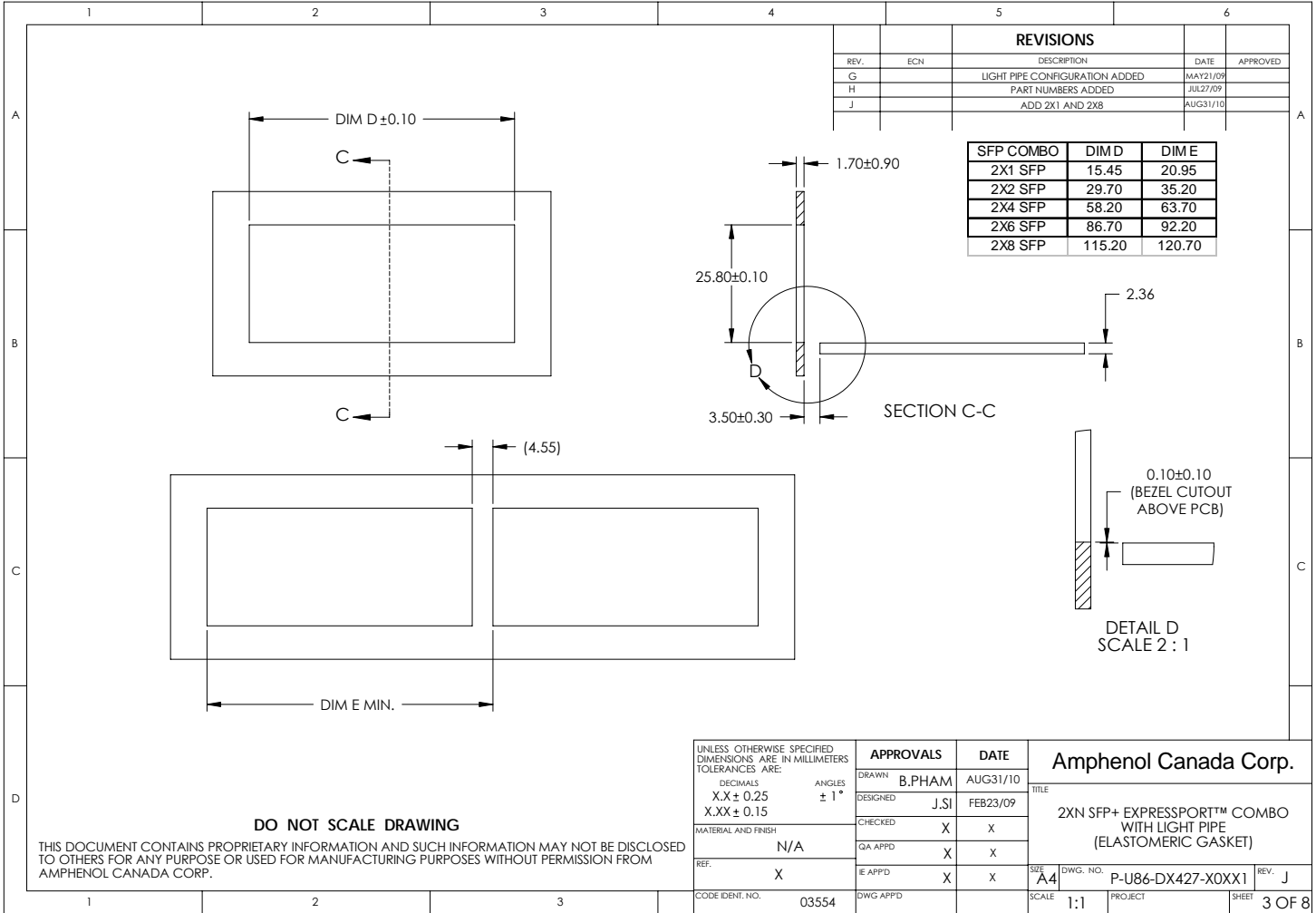
**CAGE PLATING**  
 1 = 0.76 µm MIN. GOLD ON MATING AREA  
 3.81-7.62 µm TIN/LEAD ON TERMINATION  
 2 = NICKEL

**PRESS FIT CONNECTOR PLATING**  
 1 = 0.76 µm MIN. GOLD ON MATING AREA  
 3.81-7.62 µm TIN/LEAD ON TERMINATION  
 4 = 0.38 µm MIN. GOLD ON MATING AREA  
 3.81-7.62 µm TIN/LEAD ON TERMINATION

**DO NOT SCALE DRAWING**  
 THIS DOCUMENT CONTAINS PROPRIETARY INFORMATION AND SUCH INFORMATION MAY NOT BE DISCLOSED TO OTHERS FOR ANY PURPOSE OR USED FOR MANUFACTURING PURPOSES WITHOUT PERMISSION FROM AMPHENOL CANADA CORP.

UNLESS OTHERWISE SPECIFIED DIMENSIONS ARE IN MILLIMETERS TOLERANCES ARE:		<b>APPROVALS</b>		<b>DATE</b>		<b>Amphenol Canada Corp.</b>	
DECIMALS	ANGLES	DRAWN	B.PHAM	AUG31/10		TITLE	
X.X ± 0.25	± 1°	DESIGNED	J.SI	FEB23/09		2XN SFP+ EXPRESSPORT™ COMBO WITH LIGHT PIPE (ELASTOMERIC GASKET)	
X.XX ± 0.15		CHECKED	X	X			
MATERIAL AND FINISH	N/A	QA APPD	X	X			
REF.	X	E APPD	X	X		SIZE	DWG. NO.
CODE IDENT. NO.	03554	DWG APPD				A4	P-U86-DX427-X0XX1
				SCALE	2:3	PROJECT	SHEET
							1 OF 8





REVISIONS				
REV.	ECN	DESCRIPTION	DATE	APPROVED
G		LIGHT PIPE CONFIGURATION ADDED	MAY21/09	
H		PART NUMBERS ADDED	JUL27/09	
J		ADD 2X1 AND 2X8	AUG31/10	

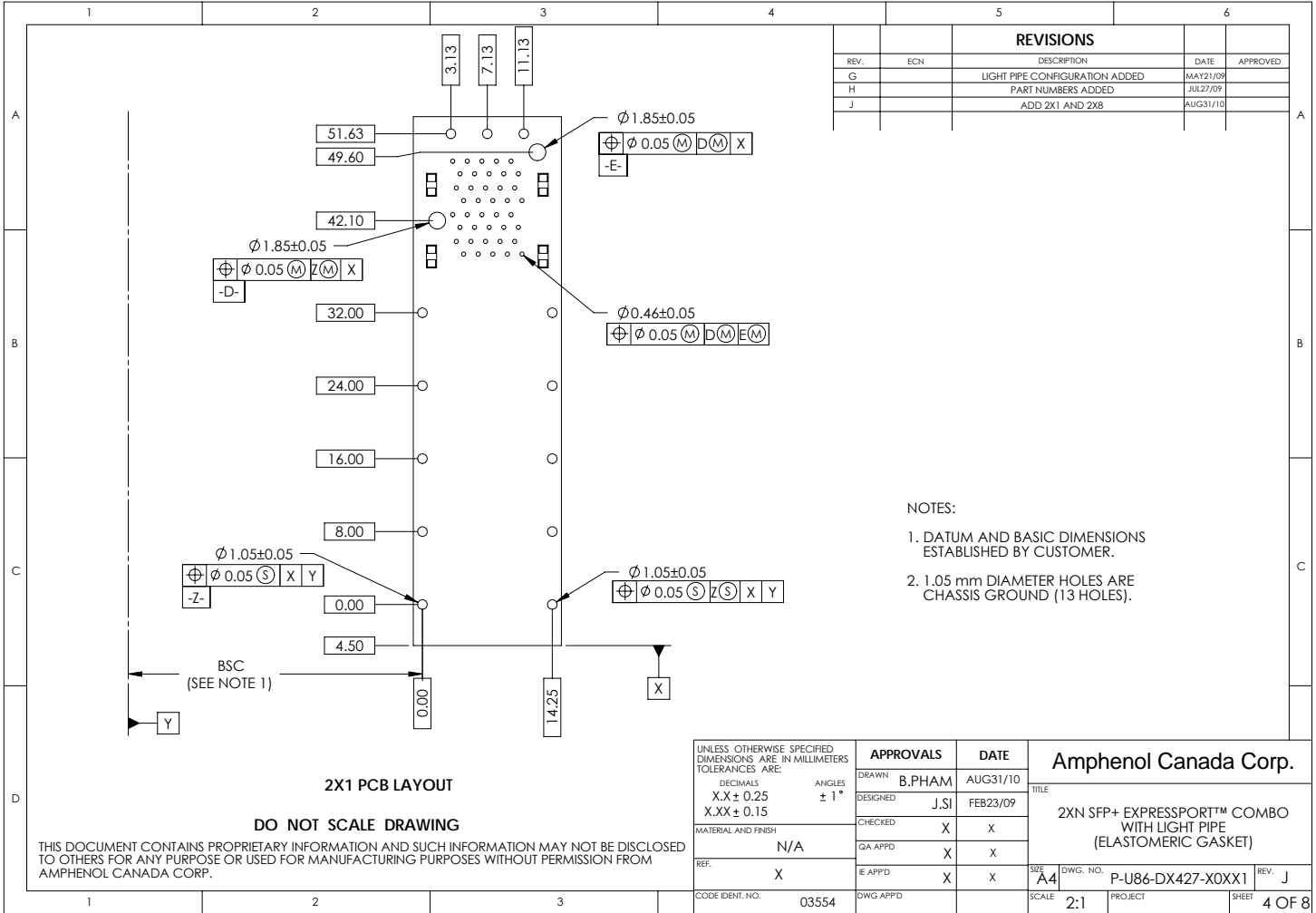
SFP COMBO	DIM D	DIM E
2X1 SFP	15.45	20.95
2X2 SFP	29.70	35.20
2X4 SFP	58.20	63.70
2X6 SFP	86.70	92.20
2X8 SFP	115.20	120.70

UNLESS OTHERWISE SPECIFIED DIMENSIONS ARE IN MILLIMETERS TOLERANCES ARE:		APPROVALS		DATE	
DECIMALS	ANGLES	DRAWN	B.PHAM	AUG31/10	
X.X ± 0.25	± 1°	DESIGNED	J.SI	FEB23/09	
X.XX ± 0.15		CHECKED	X	X	
MATERIAL AND FINISH	N/A	QA APPD	X	X	
REF.	X	IE APPD	X	X	
CODE IDENT. NO.	03554	DWG APPD			

Amphenol Canada Corp.		
TITLE	2XN SFP+ EXPRESSPORT™ COMBO WITH LIGHT PIPE (ELASTOMERIC GASKET)	
SIZE	DWG. NO.	REV.
A4	P-U86-DX427-X0XX1	J
SCALE	PROJECT	SHEET
1:1		3 OF 8

**DO NOT SCALE DRAWING**

THIS DOCUMENT CONTAINS PROPRIETARY INFORMATION AND SUCH INFORMATION MAY NOT BE DISCLOSED TO OTHERS FOR ANY PURPOSE OR USED FOR MANUFACTURING PURPOSES WITHOUT PERMISSION FROM AMPHENOL CANADA CORP.



REVISIONS				
REV.	ECN	DESCRIPTION	DATE	APPROVED
G		LIGHT PIPE CONFIGURATION ADDED	MAY21/09	
H		PART NUMBERS ADDED	JUL27/09	
J		ADD 2X1 AND 2X8	AUG31/10	

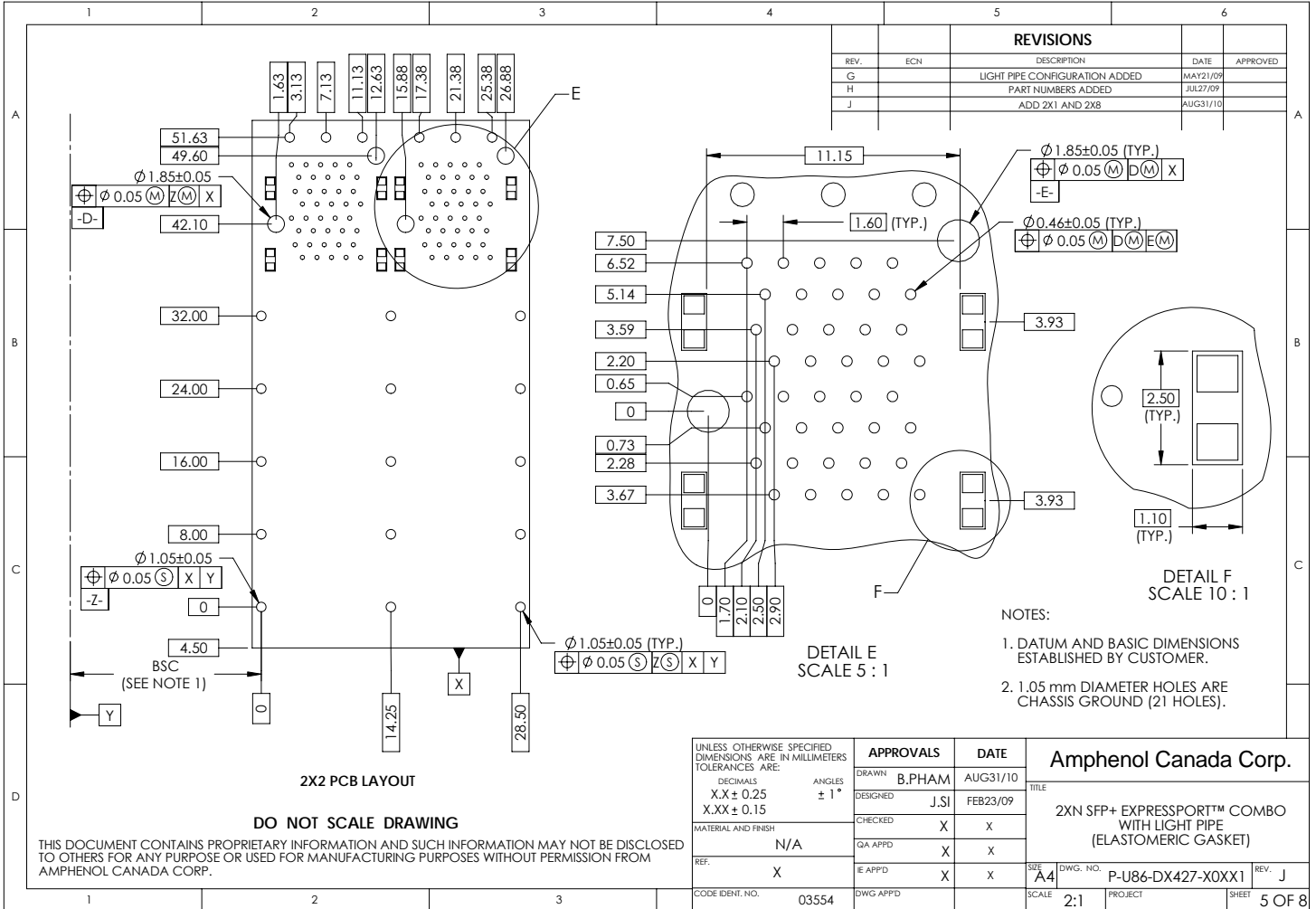
- NOTES:
- DATUM AND BASIC DIMENSIONS ESTABLISHED BY CUSTOMER.
  - 1.05 mm DIAMETER HOLES ARE CHASSIS GROUND (13 HOLES).

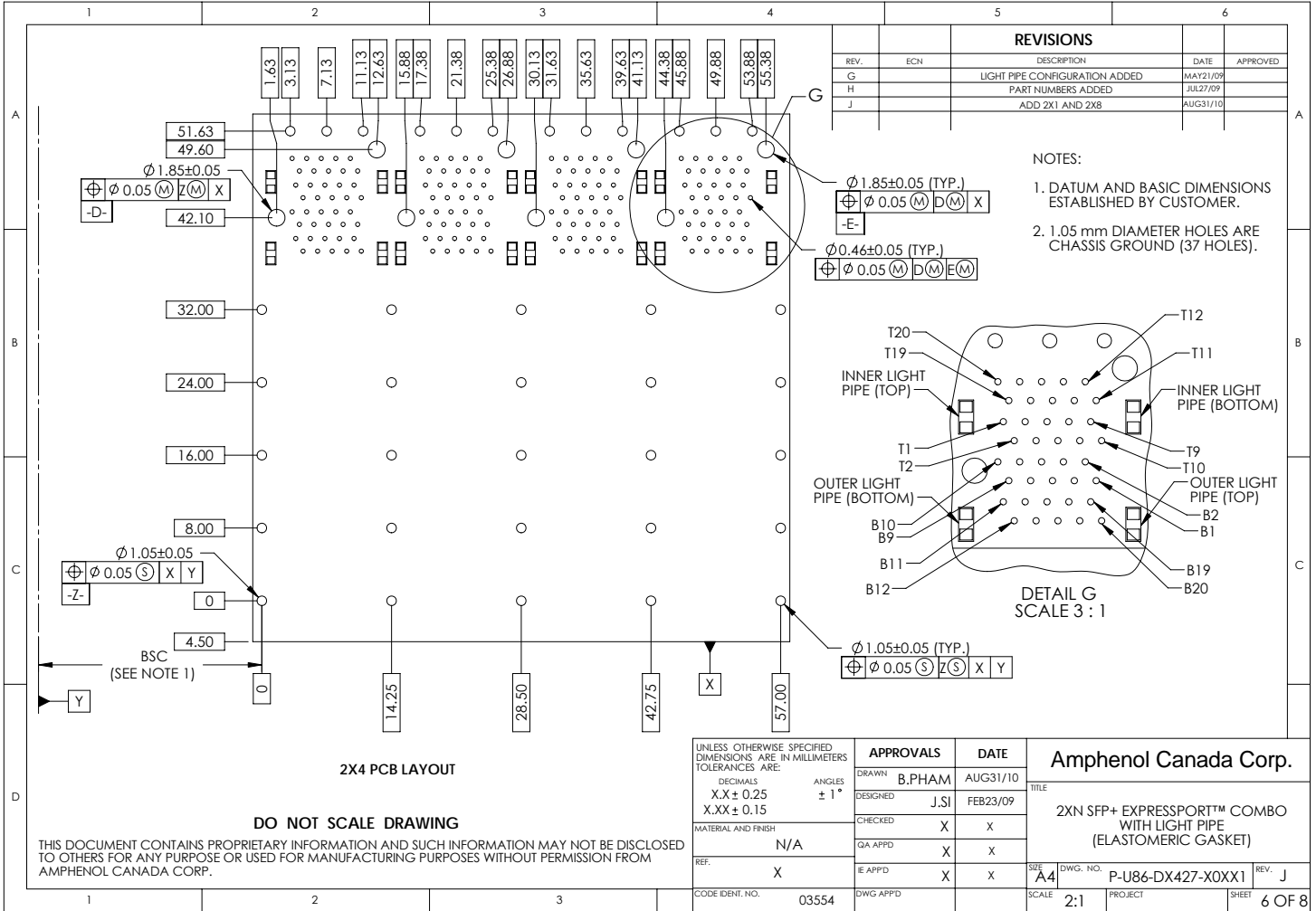
**2X1 PCB LAYOUT**

**DO NOT SCALE DRAWING**

THIS DOCUMENT CONTAINS PROPRIETARY INFORMATION AND SUCH INFORMATION MAY NOT BE DISCLOSED TO OTHERS FOR ANY PURPOSE OR USED FOR MANUFACTURING PURPOSES WITHOUT PERMISSION FROM AMPHENOL CANADA CORP.

<small>UNLESS OTHERWISE SPECIFIED DIMENSIONS ARE IN MILLIMETERS TOLERANCES ARE:</small> DECIMALS      ANGLES X.X ± 0.25      ± 1° X.XX ± 0.15	<b>APPROVALS</b>		<b>DATE</b>	<b>Amphenol Canada Corp.</b> TITLE 2XN SFP+ EXPRESSPORT™ COMBO WITH LIGHT PIPE (ELASTOMERIC GASKET)
	DRAWN	B.PHAM	AUG31/10	
	DESIGNED	J.SI	FEB23/09	
	CHECKED	X	X	
MATERIAL AND FINISH	N/A		QA APPD	X
REF.	X	E APPD	X	X
CODE IDENT. NO.	03554	DWG APPD		SIZE <b>A4</b> DWG. NO. <b>P-U86-DX427-X0XX1</b> REV. <b>J</b> SCALE <b>2:1</b> PROJECT SHEET <b>4 OF 8</b>

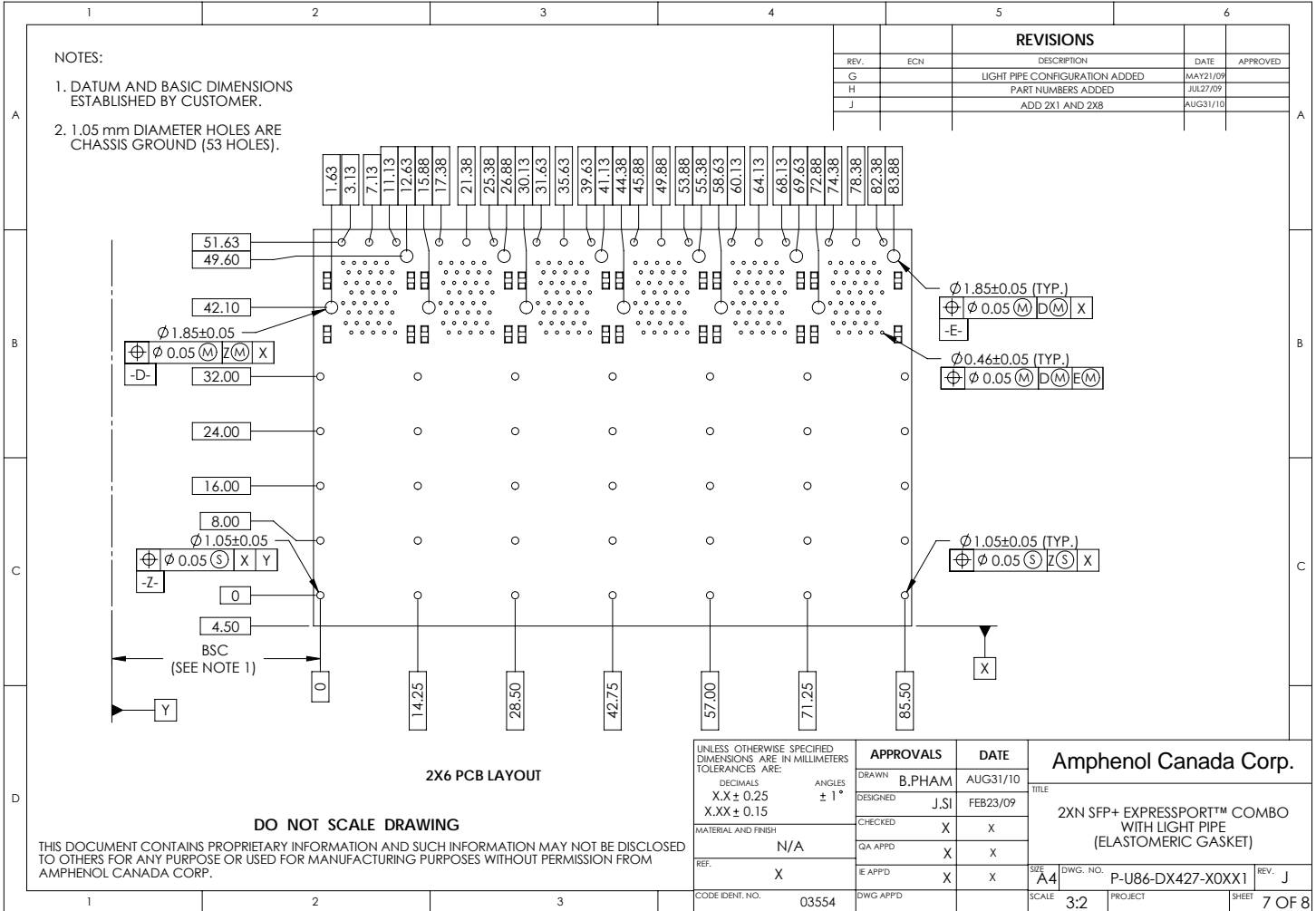




NOTES:

- DATUM AND BASIC DIMENSIONS ESTABLISHED BY CUSTOMER.
- 1.05 mm DIAMETER HOLES ARE CHASSIS GROUND (53 HOLES).

REVISIONS				
REV.	ECN	DESCRIPTION	DATE	APPROVED
G		LIGHT PIPE CONFIGURATION ADDED	MAY21/09	
H		PART NUMBERS ADDED	JUL27/09	
J		ADD 2X1 AND 2X8	AUG31/10	



UNLESS OTHERWISE SPECIFIED DIMENSIONS ARE IN MILLIMETERS TOLERANCES ARE:		APPROVALS		DATE		Amphenol Canada Corp.	
DECIMALS	ANGLES	DRAWN	B,PHAM	AUG31/10		TITLE	
X.X ± 0.25	± 1°	DESIGNED	J.SI	FEB23/09		2XN SFP+ EXPRESSPORT™ COMBO WITH LIGHT PIPE (ELASTOMERIC GASKET)	
X.XX ± 0.15		CHECKED	X	X			
MATERIAL AND FINISH		QA APPD	X	X			
N/A		E APPD	X	X		SIZE A4 DWG. NO. P-U86-DX427-X0XX1 REV. J	
REF.	X	DWG APPD				SCALE 3:2 PROJECT SHEET 7 OF 8	
CODE IDENT. NO.	03554						

DO NOT SCALE DRAWING  
THIS DOCUMENT CONTAINS PROPRIETARY INFORMATION AND SUCH INFORMATION MAY NOT BE DISCLOSED TO OTHERS FOR ANY PURPOSE OR USED FOR MANUFACTURING PURPOSES WITHOUT PERMISSION FROM AMPHENOL CANADA CORP.

