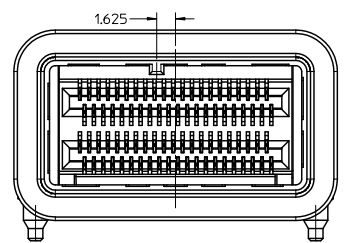
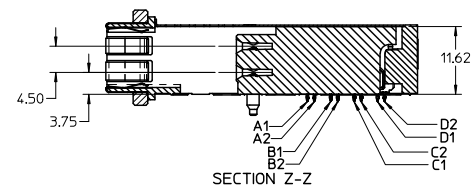
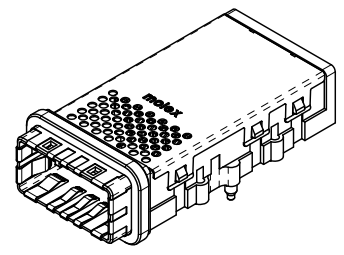
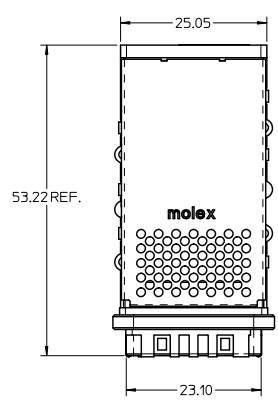


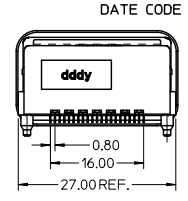
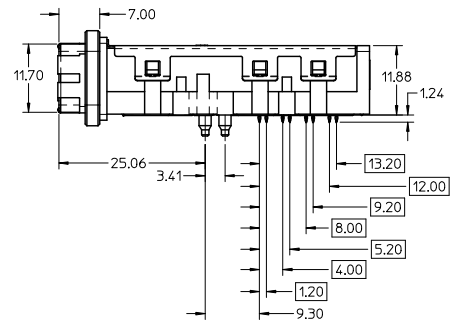
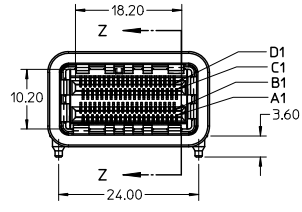
13 12 11 10 9 8 7 6 5 4 3 2 1

MATERIAL NO.	KEY OPTION	TAIL PLATING
76105-0584	LEFT	TIN / LEAD
76105-0585	LEFT	TIN



76105-0584
LEFT KEY

(EMI FINGERS REMOVED FOR CLARITY)



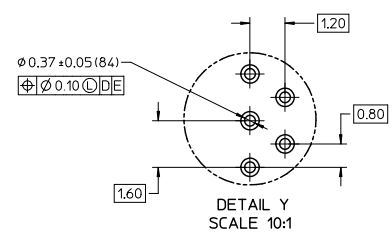
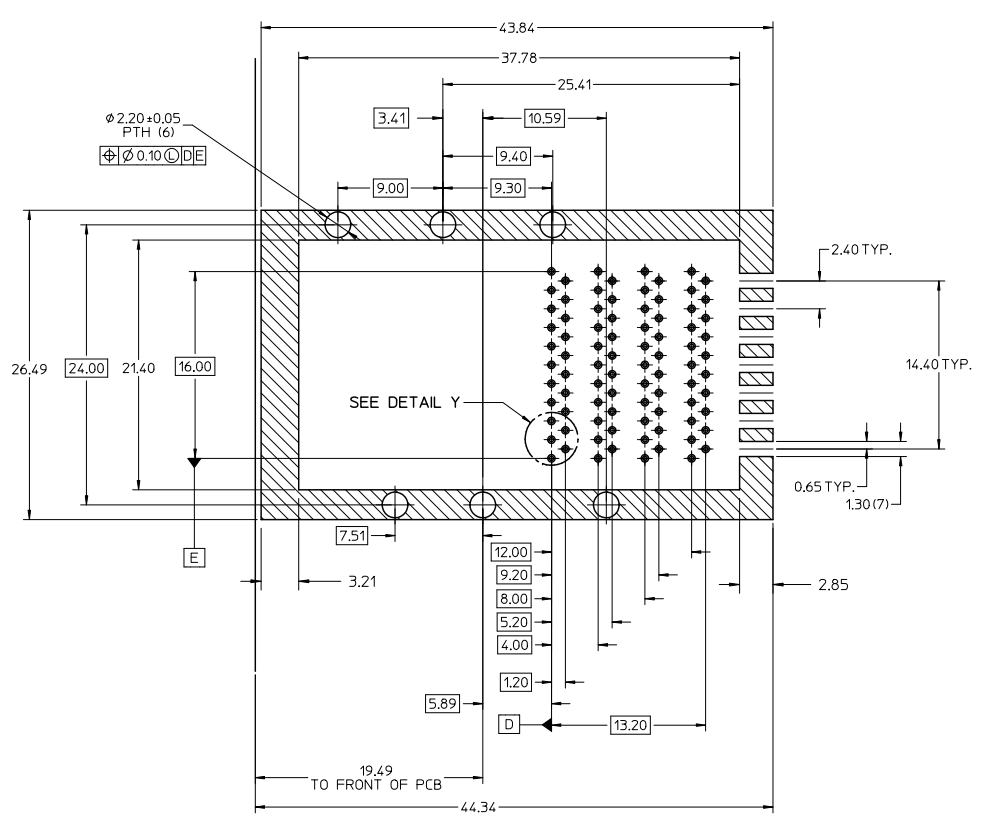
- NOTES:
- MATERIALS:**
CONNECTOR HOUSING: HIGH TEMPERATURE THERMOPLASTIC
GLASS-FILLED, UL 94V-0
EMI HOUSING: NICKEL PLATED DIE CAST ALLOY
COVER: STAINLESS STEEL ALLOY
EMI GASKET: CONDUCTIVE POLYMER
TERMINALS: COPPER ALLOY
 - PLATING:**
CONTACT AREA: 0.764mm MIN. GOLD OVER 2.544mm MIN. NICKEL
TIN/LEAD TAIL AREA: 0.764mm - 1.524mm TIN/LEAD (90/10)
TIN TAIL AREA: 0.764mm - 1.524mm TIN
OVER 1.274mm MIN NICKEL
 - THIS CONNECTOR IS DESIGNED TO MATE WITH MOLEX CABLE SERIES TBD.
 - PACKAGING SPECIFICATION: TRAY PACK PER PK-76105-001.
 - MOUNTING HARDWARE REQUIRED: M2x0.4 CAP SCREWS (4)
MOUNTING SCREW LENGTH: BOARD THICKNESS + 4mm MAX

REVISED DIMENSION IEC NO. UCP2011-2408 DRAWN: JLONG 2011/02/10 CHKD: MBANKAKIS 2011/02/11 APPR: MBANKAKIS	QUALITY SYMBOLS 	GENERAL TOLERANCES (UNLESS SPECIFIED)		DIMENSION STYLE MM ONLY		SCALE 2:1	DESIGN UNITS METRIC	THIRD ANGLE PROJECTION			
		4 PLACES ± 0.25 ± 0.10 3 PLACES ± 0.25 ± 0.10 2 PLACES ± 0.25 ± 0.10 1 PLACE ± 0.25 ± 0.10	mm INCH	DRAWN BY KLANG	DATE 2008/05/05	TITLE IPASS PLUS HSC 84 HIGH SPEED CHANNEL 0.8MM I/O					
		ANGULAR ± 1/2°		CHECKED BY KLANG	DATE 2008/05/05	MATERIAL NO. MBANKAKIS					
DRAFT WHERE APPLICABLE MUST REMAIN WITHIN DIMENSIONS		SEE CHART		APPROVED BY MBANKAKIS		DATE 2008/05/19	MOLEX INCORPORATED		SHEET NO. 1 OF 4		
REVISED DIMENSION F3		SIZE C		THIS DRAWING CONTAINS INFORMATION THAT IS PROPRIETARY TO MOLEX INCORPORATED AND SHOULD NOT BE USED WITHOUT WRITTEN PERMISSION							

12 11 10 9 8 7 6 5 4 3 2 1

1b_frame_C.P. AM.T
Rev. E 2006/04/15

13 12 11 10 9 8 7 6 5 4 3 2 1



- NOTES:
- CROSS-HATCHED AREA TO BE CONDUCTIVE ON THE PCB.
 - CROSS-HATCHED AREA MUST BE INCORPORATED IN THE FLAT ROCK PRESS-FIT TOOLING.
 - RECOMMENDED DRILL SIZE FOR 0.37 ϕ FINISHED PTH IS 0.48-0.50 mm ϕ (.0189-.0200 in ϕ (#76 DRILL))
 - RECOMMENDED ANNULAR RING AROUND 0.37 ϕ FINISHED PTH IS 0.73 ϕ
 - MINIMUM RECOMMENDED SPACING: 26.50

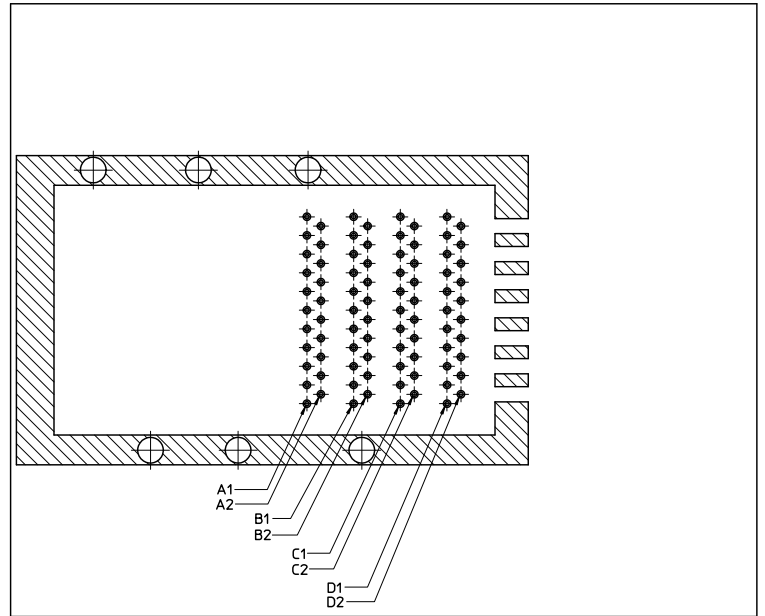
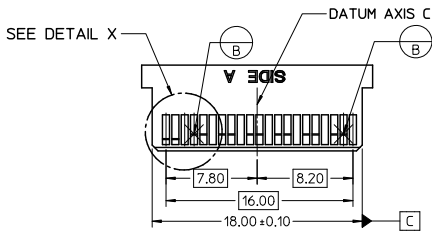
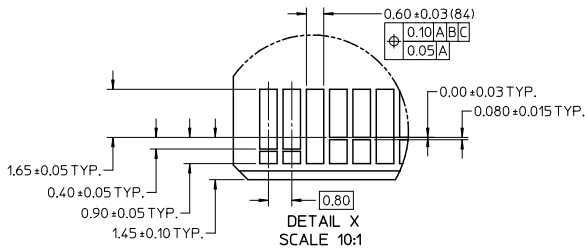
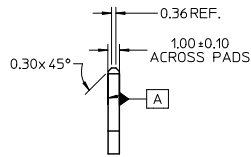
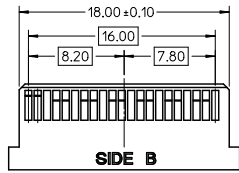
RECOMMENDED PCB LAYOUT
COMPONENT SIDE SHOWN

PCB THICKNESS: 1.57mm MIN.

SEE SHEET 1 IEC NO: UCP2011-2408 DRAWN: JLONG 2011/02/10 CHKD: APPR: MBANKA1S 2011/02/11 REV	QUALITY SYMBOLS	GENERAL TOLERANCES (UNLESS SPECIFIED)	DIMENSION STYLE	SCALE	DESIGN UNITS	THIRD ANGLE PROJECTION
	$\nabla=0$ $\nabla=0$	mm INCH 4 PLACES ± --- ± --- 3 PLACES ± --- ± --- 2 PLACES ± 0.25 ± --- 1 PLACE ± 0.25 ± --- ANGULAR ± 1/2°	MM ONLY	4:1	METRIC	DRAWN BY: KLANG DATE: 2008/05/05 CHECKED BY: KLANG DATE: 2008/05/05 APPROVED BY: MBANKA1S DATE: 2008/05/19
		DRAFT WHERE APPLICABLE MUST REMAIN WITHIN DIMENSIONS	SEE SHEET 1	TITLE: IPASS PLUS HSC 84 HIGH SPEED CHANNEL 0.8MM I/O MOLEX INCORPORATED		
				MATERIAL NO. SD-76105-584	DOCUMENT NO.	SHEET NO. 2 OF 4

12 11 10 9 8 7 6 5 4 3 2 1

13 12 11 10 9 8 7 6 5 4 3 2 1

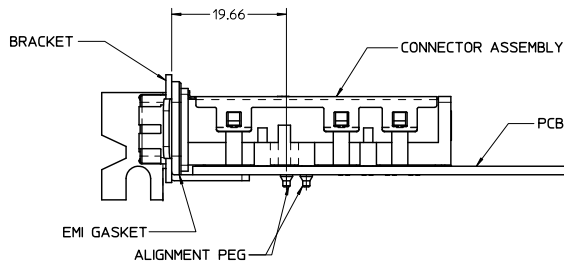
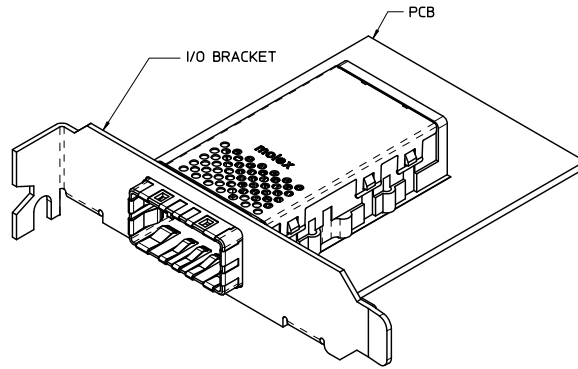


- NOTES:
- 0.03 MINIMUM KEEP OUT FOR SOLDER MASK AROUND ALL PADS
 - DATUM B TARGETS ARE DEFINED BY THE RESPECTIVE PAD CENTER LINES AND THE LEADING EDGE OF THE TARGET PADS

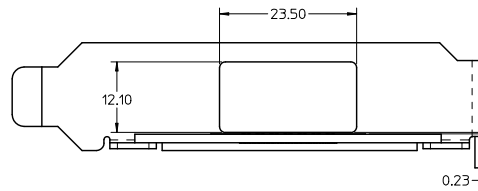
SEE SHEET 1 DEC. NO. UCP2011-2/08 DRAWN: JLONG 2011/02/10 CHKD: APPR: MBANKI S 2011/02/11	QUALITY SYMBOLS	GENERAL TOLERANCES (UNLESS SPECIFIED)		DIMENSION STYLE		SCALE	DESIGN UNITS	THIRD ANGLE PROJECTION		
	$\nabla=0$ $\nabla=0$	mm	INCH	MM ONLY		4:1	METRIC			
		4 PLACES ± --- ± ---	3 PLACES ± --- ± ---	DRAWN BY	DATE	TITLE				
		2 PLACES ± 0.25 ± ---	1 PLACE ± 0.25 ± ---	KLANG	2008/05/05	IPASS PLUS HSC 84 HIGH SPEED CHANNEL 0.8MM I/O				
	ANGULAR ± 1/2°		APPROVED BY	DATE	MOLEX INCORPORATED					
	DRAFT WHERE APPLICABLE MUST REMAIN WITHIN DIMENSIONS		MBANKI S	2008/05/19	MATERIAL NO.		DOCUMENT NO.	SHEET NO.		
			SEE CHART		SD-76105-584		3 OF 4			
THIS DRAWING CONTAINS INFORMATION THAT IS PROPRIETARY TO MOLEX INCORPORATED AND SHOULD NOT BE USED WITHOUT WRITTEN PERMISSION										

12 11 10 9 8 7 6 5 4 3 2 1

13 12 11 10 9 8 7 6 5 4 3 2 1



ASSEMBLED VIEW



I/O BRACKET CUT-OUT

(NOT SUPPLIED)

SEE SHEET 1 IEC NO: UCP2011-2408 DRAWN: JLONG 2011/02/10 CHKD: MBANAKIS APPR: MBANAKIS 2011/02/11	QUALITY SYMBOLS ▽=0 ▽=0	GENERAL TOLERANCES (UNLESS SPECIFIED)		DIMENSION STYLE		SCALE	DESIGN UNITS	THIRD ANGLE PROJECTION
		mm	INCH	MM ONLY		2:1	METRIC	
		4 PLACES ±---	±---	DRAWN BY	DATE	TITLE		
		3 PLACES ±---	±---	KLANG	2008/05/05	IPASS PLUS HSC 84 HIGH SPEED CHANNEL 0.8MM I/O		
2 PLACES ±0.25	±---	CHECKED BY	DATE	MATERIAL NO.		DOCUMENT NO.		
1 PLACE ±0.25	±---	KLANG	2008/05/05	MBANAKIS		SD-76105-584		
ANGULAR ±1/2°		APPROVED BY	DATE	MATERIAL NO.		DOCUMENT NO.		
DRAFT WHERE APPLICABLE MUST REMAIN WITHIN DIMENSIONS		MBANAKIS	2008/05/19	SEE SHEET 1		SD-76105-584		
		THIS DRAWING CONTAINS INFORMATION THAT IS PROPRIETARY TO MOLEX INCORPORATED AND SHOULD NOT BE USED WITHOUT WRITTEN PERMISSION						SHEET NO.
								4 OF 4

12 11 10 9 8 7 6 5 4 3 2 1