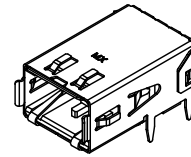
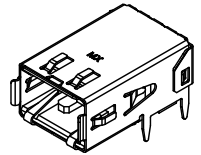


NOTES:

- MATERIALS: HOUSING - LIQUID CRYSTAL POLYMER, UL94 V-0, NATURAL  
TERMINAL - COPPER NICKEL SILICON ALLOY  
SHIELD - BRASS ALLOY
- FINISHES:  
TERMINAL: 1.27 MICROMETERS MINIMUM SELECT GOLD AND  
3.81 MICROMETERS MINIMUM SELECT TIN OVER  
NICKEL UNDERPLATE OVERALL.  
SHELL: 3.00 MICROMETERS MINIMUM TIN OVER  
NICKEL UNDERPLATE OVERALL.
- PACKAGE TAPE AND REEL PER PK-74703-001 AND  
PACKAGE TRAYS PER PK-74703-002.
- PART CONFORMS TO SPECIFICATION PS-74703-001.
- DROP-IN AND PRESS FIT ASSEMBLIES REQUIRED TO  
BE SOLDERED TO BOARD.



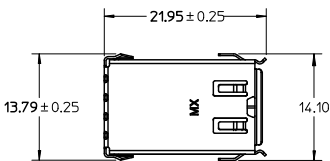
INFINIBAND KEYING  
WITH DROP-IN SHIELD



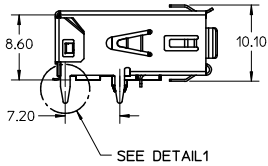
FIBRE CHANNEL KEYING  
WITH DROP-IN SHIELD

NOTE FOR LEAD FREE CONVERSION:

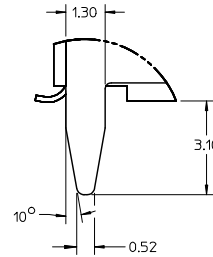
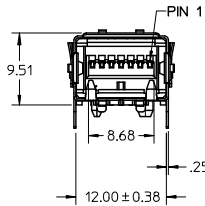
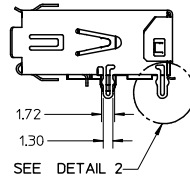
THE PRIMARY SHIPPING CARTON WILL BE LABELED "COMPLIANT TO RoHS DIRECTIVE 2002/95/EC AND ELV ANNEX II OF DIRECTIVE 2000/53/EC". CARTONS WITHOUT THIS LABEL MAY CONTAIN PRODUCT WITH LEAD.



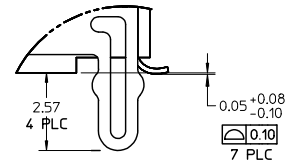
DROP-IN SHIELD



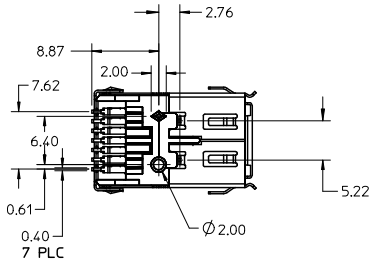
PRESS-FIT SHIELD



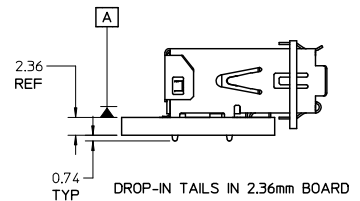
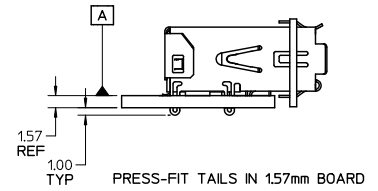
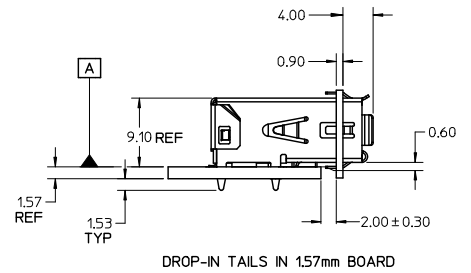
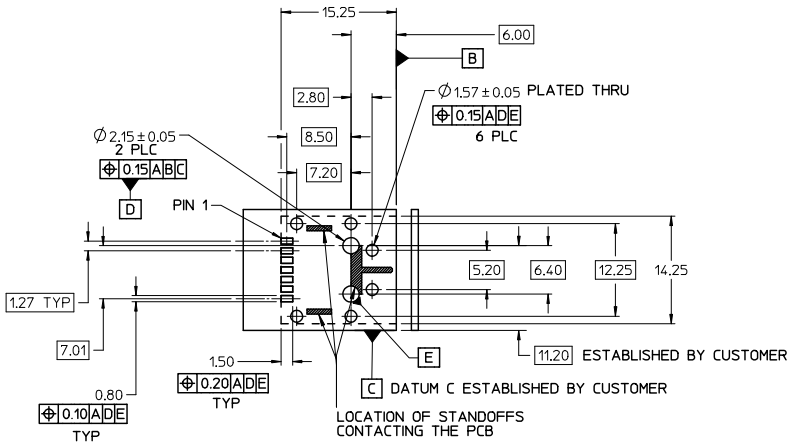
DETAIL 1  
SCALE 8:1



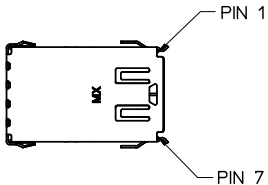
DETAIL 2  
SCALE 8:1



MODIFY TOLERANCE EC NO: UCP2009-117 DRW:MSLBARRA 2008/10/29 CHK:DMORGAN 2008/10/29 APPR:SKILLER 2008/10/30	QUALITY SYMBOLS ▽=0 ▽=0	GENERAL TOLERANCES (UNLESS SPECIFIED)		DIMENSION STYLE MM ONLY		SCALE 2:1	DESIGN UNITS METRIC	THIRD ANGLE PROJECTION
		4 PLACES ± --- ± ---	DRAWN BY KSTILES	DATE 10/06/2000	TITLE SALES DRAWING HSSDC2 RECEPTACLE ASSEMBLY			
		3 PLACES ± --- ± ---	CHECKED BY RSFOX	DATE 10/09/2000	MOLEX INCORPORATED			
		2 PLACES ± 0.13 ± --- 1 PLACE ± 0.25 ± --- ANGULAR ± 3 °	APPROVED BY DBRINKMA	DATE 10/12/2000	MATERIAL NO. SEE TABLE	DOCUMENT NO. SD-74703-001	SHEET NO. 1 OF 3	
H1	DRAFT WHERE APPLICABLE MUST REMAIN WITHIN DIMENSIONS	THIS DRAWING CONTAINS INFORMATION THAT IS PROPRIETARY TO MOLEX INCORPORATED AND SHOULD NOT BE USED WITHOUT WRITTEN PERMISSION						

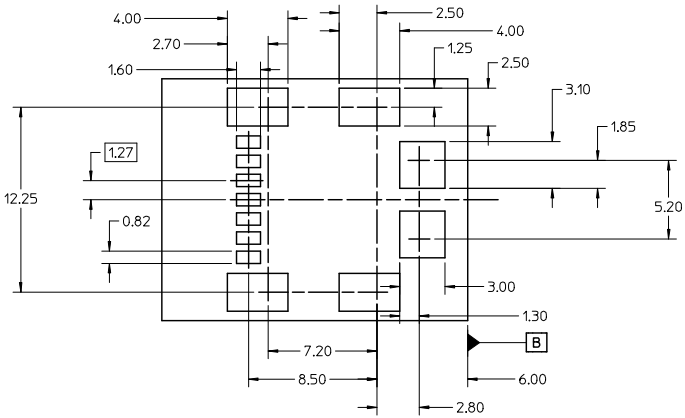


RECOMMENDED PCB LAYOUT  
COMPONENT SIDE SHOWN  
THE ENTIRE AREA OF THE CONNECTOR FOOTPRINT TO  
BE CONSIDERED THE KEEP OUT AREA (FOR COMPONENTS).  
THIS AREA IS INDICATED BY THE DASHED LINE.

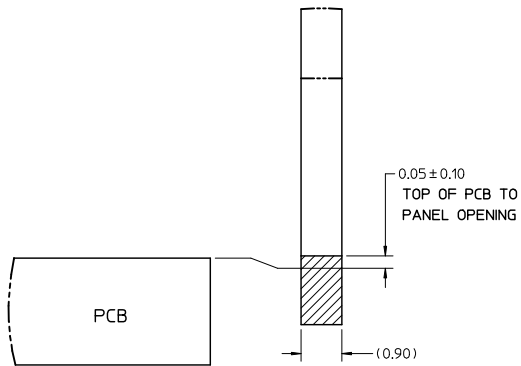


PIN NO.	INFINIBAND	FIBRE CHANNEL
1	G	G
2	R+	R-
3	R-	R+
4	G	G
5	T-	T+
6	T+	T-
7	G	G

SEE SHEET 1 IEC NO: UCP2009-117 DRAWN BY: BARRA CHKD BY: MORGAN APPR: SMILLER 2008/10/29 2008/10/29 2008/10/30	QUALITY SYMBOLS ▽=0 ▽=0	GENERAL TOLERANCES (UNLESS SPECIFIED)		DIMENSION STYLE MM ONLY		SCALE 2:1	DESIGN UNITS METRIC	THIRD ANGLE PROJECTION	
		4 PLACES ± --- ± --- 3 PLACES ± --- ± --- 2 PLACES ± 0.13 ± --- 1 PLACE ± 0.25 ± ---	mm INCH	DRAWN BY KSTILES 10/06/2000	DATE 10/06/2000	TITLE SALES DRAWING HSSDC2 RECEPTACLE ASSEMBLY			
		ANGULAR ± 3 °		CHECKED BY RSFOX 10/09/2000	DATE 10/09/2000	MOLEX INCORPORATED			
		DRAFT WHERE APPLICABLE MUST REMAIN WITHIN DIMENSIONS		APPROVED BY DBRINKMA 10/12/2000	DATE 10/12/2000	MATERIAL NO. SEE TABLE	DOCUMENT NO. SD-74703-001	SHEET NO. 2 OF 3	THIS DRAWING CONTAINS INFORMATION THAT IS PROPRIETARY TO MOLEX INCORPORATED AND SHOULD NOT BE USED WITHOUT WRITTEN PERMISSION

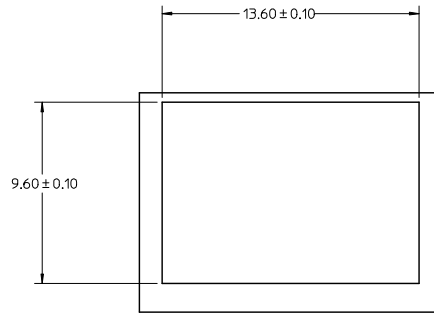


RECOMMENDED SMT STENCIL LAYOUT



PARTIAL1 SCALE 12:1

CKT. SIZE	MATERIAL NUMBER		KEYING OPTION	SHIELD OPTION
	TAPE/REEL	TRAY		
7	74703-0007	74703-0017	INFINIBAND	DROP-IN
7	74703-0107	74703-0117	FIBRE CHANNEL	DROP-IN
7	74703-0307	74703-0317	INFINIBAND	PRESS-FIT
7	74703-0407	74703-0417	FIBRE CHANNEL	PRESS-FIT



RECOMMENDED PANEL OPENING

SEE SHEET 1 IEC NO. UICP2009-117 DRAWN BY: BARBRA 2008/10/29 CHECKED BY: MORGAN 2008/10/29 APPR: SHILLER 2008/10/30	QUALITY SYMBOLS	GENERAL TOLERANCES (UNLESS SPECIFIED)	DIMENSION STYLE MM ONLY	SCALE 2:1	DESIGN UNITS METRIC	THIRD ANGLE PROJECTION																		
	▽=0 ▽=0	<table border="1"> <tr> <th></th> <th>mm</th> <th>INCH</th> </tr> <tr> <td>4 PLACES</td> <td>± ---</td> <td>± ---</td> </tr> <tr> <td>3 PLACES</td> <td>± ---</td> <td>± ---</td> </tr> <tr> <td>2 PLACES</td> <td>± 0.13</td> <td>± ---</td> </tr> <tr> <td>1 PLACE</td> <td>± 0.25</td> <td>± ---</td> </tr> <tr> <td colspan="3">ANGULAR ± 3 °</td> </tr> </table>		mm	INCH	4 PLACES	± ---	± ---	3 PLACES	± ---	± ---	2 PLACES	± 0.13	± ---	1 PLACE	± 0.25	± ---	ANGULAR ± 3 °			DRAWN BY: XSTILES DATE: 10/06/2000 CHECKED BY: RSFOX DATE: 10/09/2000 APPROVED BY: DBRINKMA DATE: 10/12/2000	TITLE: SALES DRAWING HSSDC2 RECEPTACLE ASSEMBLY MOLEX INCORPORATED		
		mm	INCH																					
	4 PLACES	± ---	± ---																					
3 PLACES	± ---	± ---																						
2 PLACES	± 0.13	± ---																						
1 PLACE	± 0.25	± ---																						
ANGULAR ± 3 °																								
DRAFT WHERE APPLICABLE MUST REMAIN WITHIN DIMENSIONS	SEE TABLE	MATERIAL NO. SD-74703-001 DOCUMENT NO.	SHEET NO. 3 OF 3																					
H1	REV	SIZE B	THIS DRAWING CONTAINS INFORMATION THAT IS PROPRIETARY TO MOLEX INCORPORATED AND SHOULD NOT BE USED WITHOUT WRITTEN PERMISSION																					