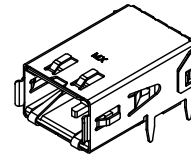
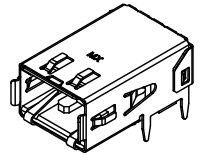


NOTES:

1. MATERIALS: HOUSING - LIQUID CRYSTAL POLYMER, UL94 V-0, NATURAL
TERMINAL - COPPER NICKEL SILICON ALLOY
SHIELD - BRASS ALLOY
2. FINISHES:
TERMINAL: 1.27 MICROMETERS MINIMUM SELECT GOLD AND
3.81 MICROMETERS MINIMUM SELECT TIN OVER
NICKEL UNDERPLATE OVERALL.
SHELL: 3.00 MICROMETERS MINIMUM TIN OVER
NICKEL UNDERPLATE OVERALL.
3. PACKAGE TAPE AND REEL PER PK-74703-001 AND
PACKAGE TRAYS PER PK-74703-002.
4. PART CONFORMS TO SPECIFICATION PS-74703-001.
5. DROP-IN AND PRESS FIT ASSEMBLIES REQUIRED TO
BE SOLDERED TO BOARD.



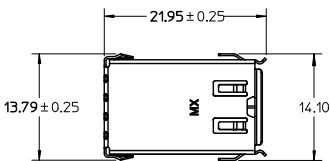
INFIBAND KEYING
WITH DROP-IN SHIELD



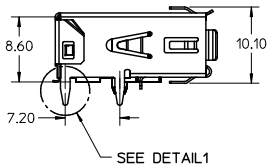
FIBRE CHANNEL KEYING
WITH DROP-IN SHIELD

NOTE FOR LEAD FREE CONVERSION:

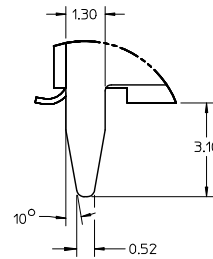
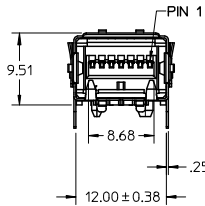
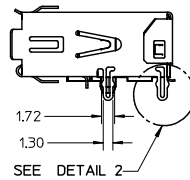
THE PRIMARY SHIPPING CARTON WILL BE LABELED "COMPLIANT TO RoHS DIRECTIVE 2002/95/EC AND ELV ANNEX II OF DIRECTIVE 2000/53/EC". CARTONS WITHOUT THIS LABEL MAY CONTAIN PRODUCT WITH LEAD.



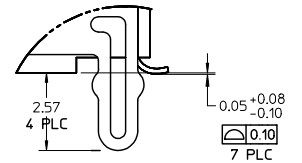
DROP-IN SHIELD



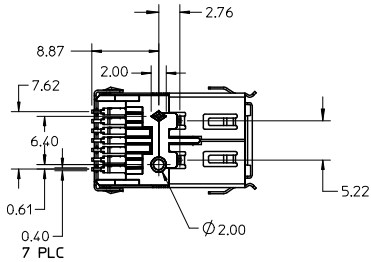
PRESS-FIT SHIELD



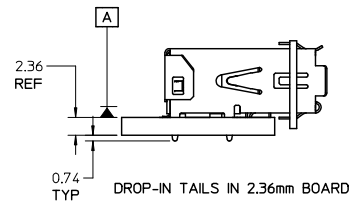
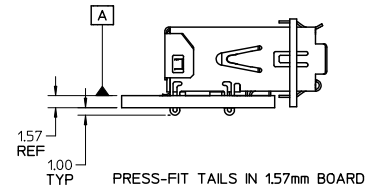
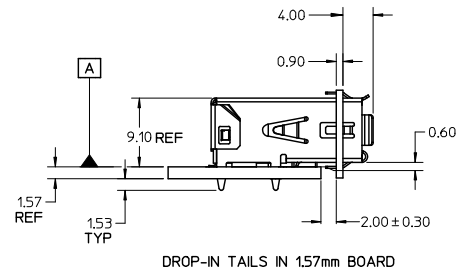
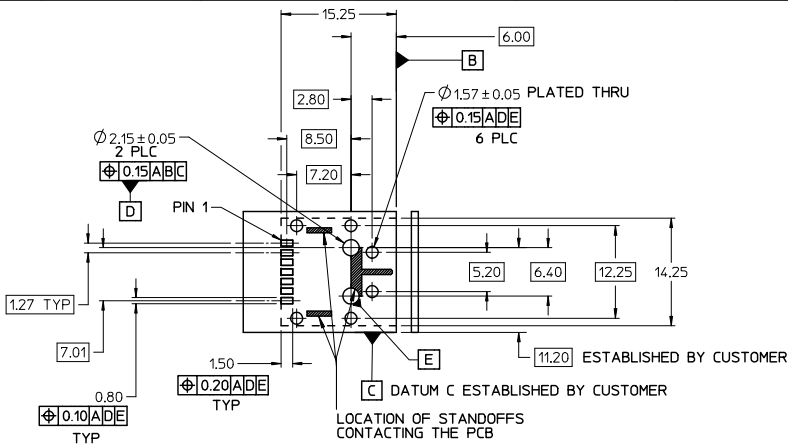
DETAIL 1
SCALE 8:1



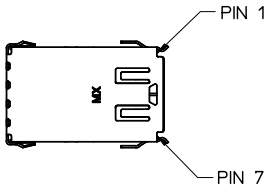
DETAIL 2
SCALE 8:1



MODIFY TOLERANCE EC NO: UCP2009-117 DRW:MSLBARRA 2008/10/29 CHK:DMORGAN 2008/10/29 APPR:SKILLER 2008/10/30	QUALITY SYMBOLS ▽=0 ▽=0	GENERAL TOLERANCES (UNLESS SPECIFIED)		DIMENSION STYLE MM ONLY		SCALE 2:1	DESIGN UNITS METRIC	THIRD ANGLE PROJECTION		
		4 PLACES ± --- ± ---	3 PLACES ± --- ± ---	2 PLACES ± 0.13 ± ---	1 PLACE ± 0.25 ± ---	DRAWN BY KSTILES	DATE 10/06/2000	TITLE SALES DRAWING HSSDC2 RECEPTACLE ASSEMBLY		
		ANGULAR ± 3 °				CHECKED BY RSFOX	DATE 10/09/2000			
		DRAFT WHERE APPLICABLE MUST REMAIN WITHIN DIMENSIONS				MATERIAL NO.	DATE 10/12/2000	APPROVED BY DBRINKMA	DOCUMENT NO. SD-74703-001	SHEET NO. 1 OF 3

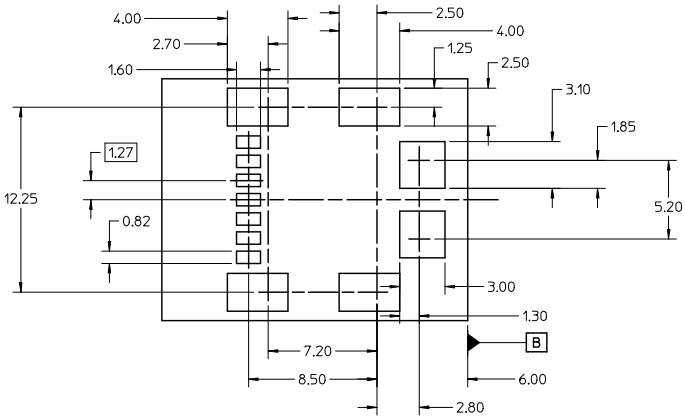


RECOMMENDED PCB LAYOUT
COMPONENT SIDE SHOWN
THE ENTIRE AREA OF THE CONNECTOR FOOTPRINT TO
BE CONSIDERED THE KEEP OUT AREA (FOR COMPONENTS).
THIS AREA IS INDICATED BY THE DASHED LINE.

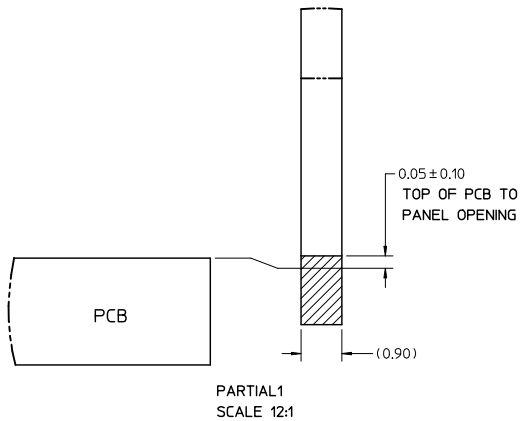


PIN NO.	INFINIBAND	FIBRE CHANNEL
1	G	G
2	R+	R-
3	R-	R+
4	G	G
5	T-	T+
6	T+	T-
7	G	G

SEE SHEET 1 IEC NO: UCP2009-117 DRAWN BY: BARRA CHKD BY: MORGAN APPR: SMILLER 2008/10/29 2008/10/30 DESCRIPTION	QUALITY SYMBOLS	GENERAL TOLERANCES (UNLESS SPECIFIED)	DIMENSION STYLE	SCALE	DESIGN UNITS	THIRD ANGLE PROJECTION	
	$\nabla=0$ $\nabla=0$	mm INCH 4 PLACES ± --- ± --- 3 PLACES ± --- ± --- 2 PLACES ± 0.13 ± --- 1 PLACE ± 0.25 ± --- ANGULAR ± 3 °	MM ONLY	2:1	METRIC		
		DRAFT WHERE APPLICABLE MUST REMAIN WITHIN DIMENSIONS	DRAWN BY: KSTILES CHECKED BY: RSFOX APPROVED BY: DBRINKMA DATE: 10/06/2000 DATE: 10/09/2000 DATE: 10/12/2000	TITLE	SALES DRAWING HSSDC2 RECEPTACLE ASSEMBLY		
			MATERIAL NO. SEE TABLE	DOCUMENT NO. SD-74703-001	MOLEX INCORPORATED THIS DRAWING CONTAINS INFORMATION THAT IS PROPRIETARY TO MOLEX INCORPORATED AND SHOULD NOT BE USED WITHOUT WRITTEN PERMISSION		
			SIZE B	SHEET NO. 2 OF 3			

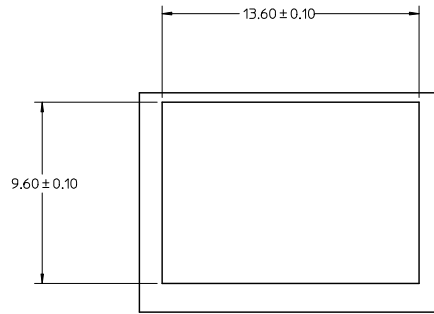


RECOMMENDED SMT STENCIL LAYOUT



PARTIAL1 SCALE 12:1

CKT. SIZE	MATERIAL NUMBER		KEYING OPTION	SHIELD OPTION
	TAPE/REEL	TRAY		
7	74703-0007	74703-0017	INFINIBAND	DROP-IN
7	74703-0107	74703-0117	FIBRE CHANNEL	DROP-IN
7	74703-0307	74703-0317	INFINIBAND	PRESS-FIT
7	74703-0407	74703-0417	FIBRE CHANNEL	PRESS-FIT



RECOMMENDED PANEL OPENING

SEE SHEET 1 IEC NO. UICP2009-117 DRAWN BY: BARBRA 2008/10/29 CHECKED BY: MORGAN 2008/10/29 APPR: SHILLER 2008/10/30	QUALITY SYMBOLS	GENERAL TOLERANCES (UNLESS SPECIFIED)	DIMENSION STYLE MM ONLY	SCALE 2:1	DESIGN UNITS METRIC	THIRD ANGLE PROJECTION
	▼=0 ▽=0	mm INCH 4 PLACES ± --- ± --- 3 PLACES ± --- ± --- 2 PLACES ± 0.13 ± --- 1 PLACE ± 0.25 ± --- ANGULAR ± 3 °	DRAWN BY: XSTILES DATE: 10/06/2000 CHECKED BY: RSFOX DATE: 10/09/2000 APPROVED BY: DBRINKMA DATE: 10/12/2000	TITLE SALES DRAWING HSSDC2 RECEPTACLE ASSEMBLY		
	DRAFT WHERE APPLICABLE MUST REMAIN WITHIN DIMENSIONS	MATERIAL NO. SEE TABLE	DOCUMENT NO. SD-74703-001	MOLEX INCORPORATED		
	H1	SIZE B	THIS DRAWING CONTAINS INFORMATION THAT IS PROPRIETARY TO MOLEX INCORPORATED AND SHOULD NOT BE USED WITHOUT WRITTEN PERMISSION			

F
E
D
C
B
A