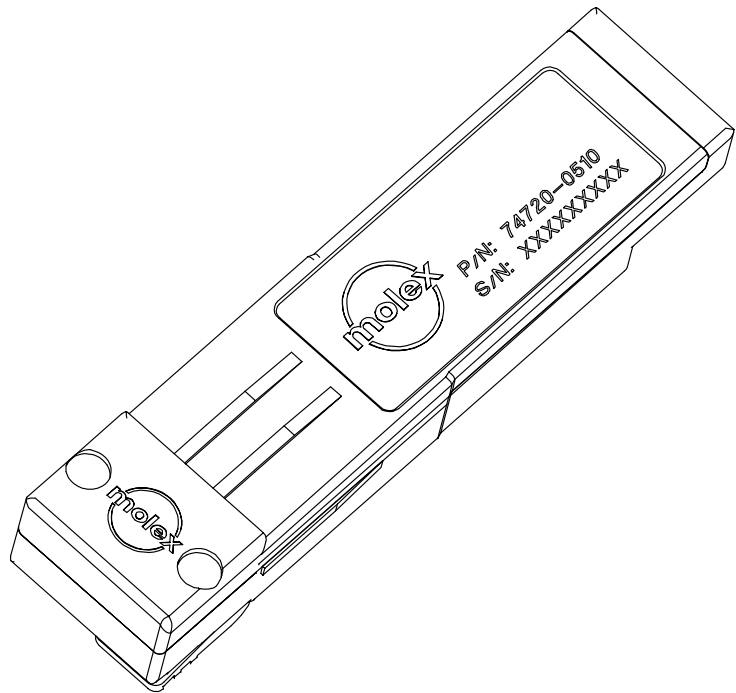


74720



1. Mates to SFP components which comply to standard MSA dimension specifications.
2. Robust zinc die cast body, bright nickel plated. Mounts belly-to-belly using .093"+ boards.
3. Raised wedges assure electrical contact with surrounding EMI cage assembly.
4. Spring loaded latch releases with simple squeeze, and pull action.

EC NO: USY20006-19205 DRWN: JERWIN 2005/08/24 CHK: KILROY 2005/08/24 APPR: KILROY 2005/08/24	QUALITY SYMBOLS DESCRIPTION REV	GENERAL TOLERANCES (UNLESS SPECIFIED)		SCALE 6:1	DESIGN UNITS METRIC	THIRD ANGLE PROJECTION	REVISE ON CAD ONLY	
			mm	INCH	DIMENSION STYLE		TITLE	
		4 PLACES ± ---	± ---		MM/IN		SFP EMI PLUG	
		3 PLACES ± ---	± .005		DRAWN BY DIRKERS	DATE 2002/05/01		
2 PLACES ± 0.13	± ---		CHECKED BY DIRKERS	DATE 2002/05/01	MOLEX INCORPORATED			
1 PLACE ± ---	± ---		APPROVED BY RUSSELL	DATE 2002/05/01	MATERIAL NO. 747200510	DOCUMENT NO. SD-74720-0510	SHEET NO. 1 OF 2	
		ANGULAR ± 1/2 °		THIS DRAWING CONTAINS INFORMATION THAT IS PROPRIETARY TO MOLEX INCORPORATED AND SHOULD NOT BE USED WITHOUT WRITTEN PERMISSION				
		DRAFT WHERE APPLICABLE MUST REMAIN WITHIN DIMENSIONS						

tb_frame_A rev. B 11/01/98

5

4

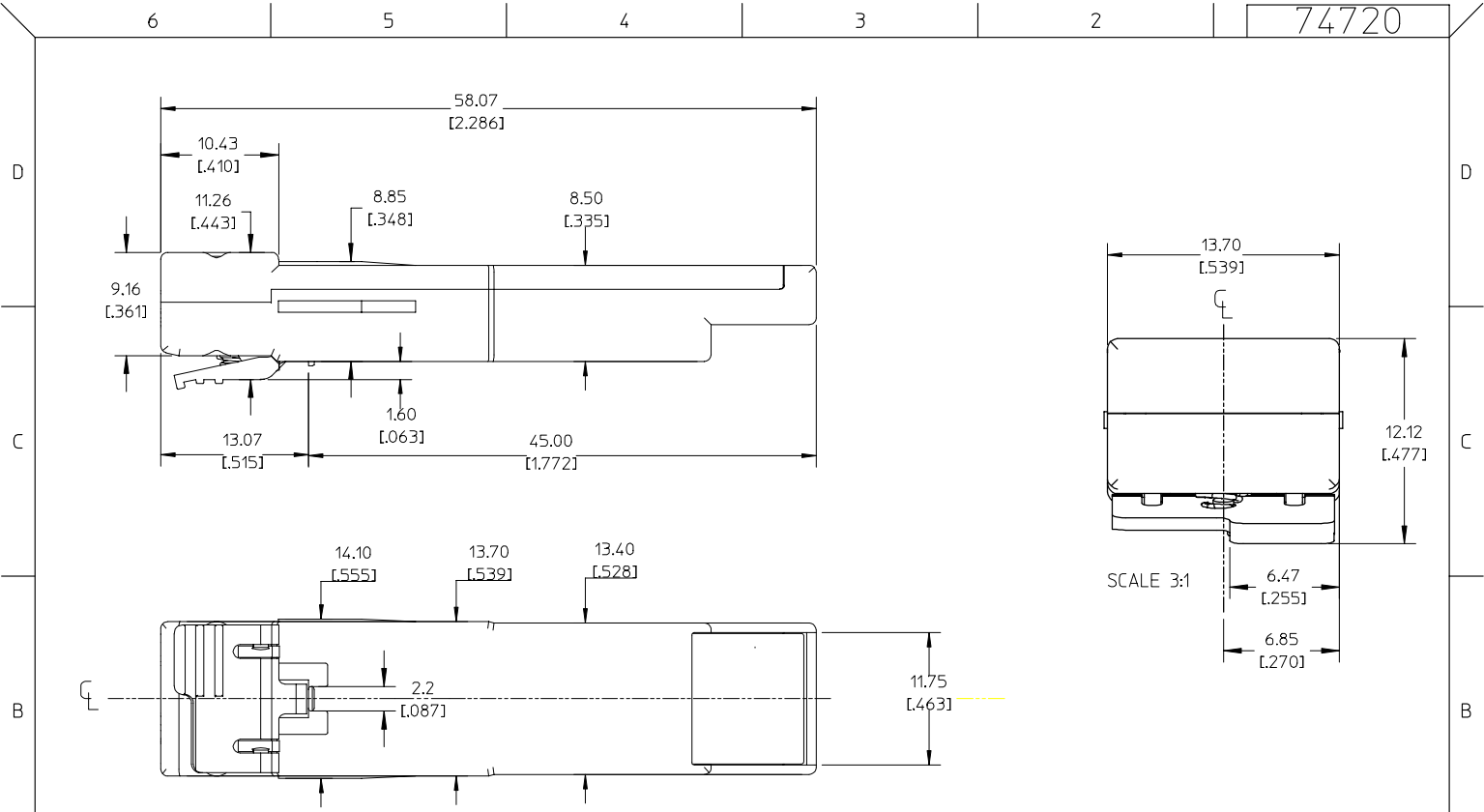
3

2

1

A

74720



EC NO: USY20006-49005 DRWN: JERWIN 2005/08/24 CHK: [blank] APPR: KLOYD 2005/08/24	QUALITY SYMBOLS	GENERAL TOLERANCES (UNLESS SPECIFIED)	SCALE 2:1	DESIGN UNITS METRIC	THIRD ANGLE PROJECTION	REVISE ON CAD ONLY
	DESCRIPTION SFP EMI PLUG	mm	INCH	DIMENSION STYLE		TITLE
		4 PLACES ± ---	± ---	MM/IN		SFP EMI PLUG
		3 PLACES ± ---	± .005	DRAWN BY DIRKERS	DATE 2002/05/01	
2 PLACES ± 0.13	± ---	CHECKED BY DIRKERS	DATE 2002/05/01	MATERIAL NO. 747200510		
1 PLACE ± ---	± ---	APPROVED BY RUSSELL	DATE 2002/05/01	DOCUMENT NO. SD-74720-0510	SHEET NO. 2 OF 2	
	ANGULAR ± 1/2 °	MATERIAL NO. 747200510				
	DRAFT WHERE APPLICABLE	DOCUMENT NO. SD-74720-0510				
	MUST REMAIN WITHIN DIMENSIONS	SHEET NO. 2 OF 2				
		THIS DRAWING CONTAINS INFORMATION THAT IS PROPRIETARY TO MOLEX INCORPORATED AND SHOULD NOT BE USED WITHOUT WRITTEN PERMISSION				

tb_frame_A
rev. B 11/01/98

5

4

3

2

1

A