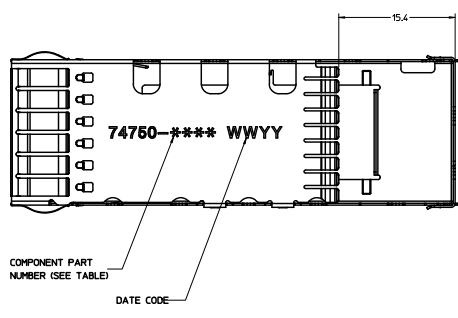
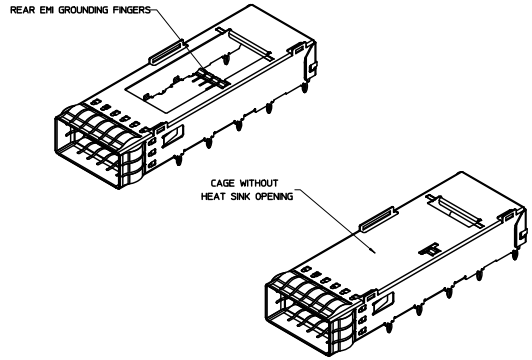
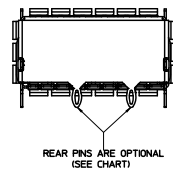
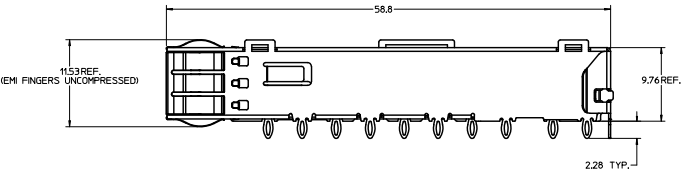
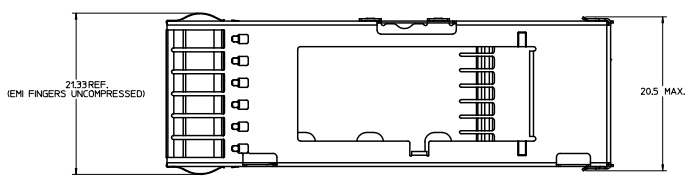


20 19 18 17 16 15 14 13 12 11 10 9 8 7 6 5 4 3 2 1

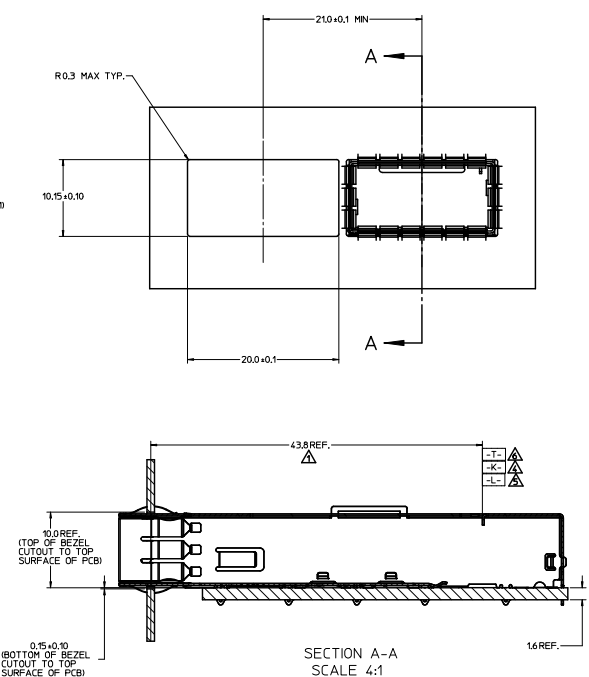
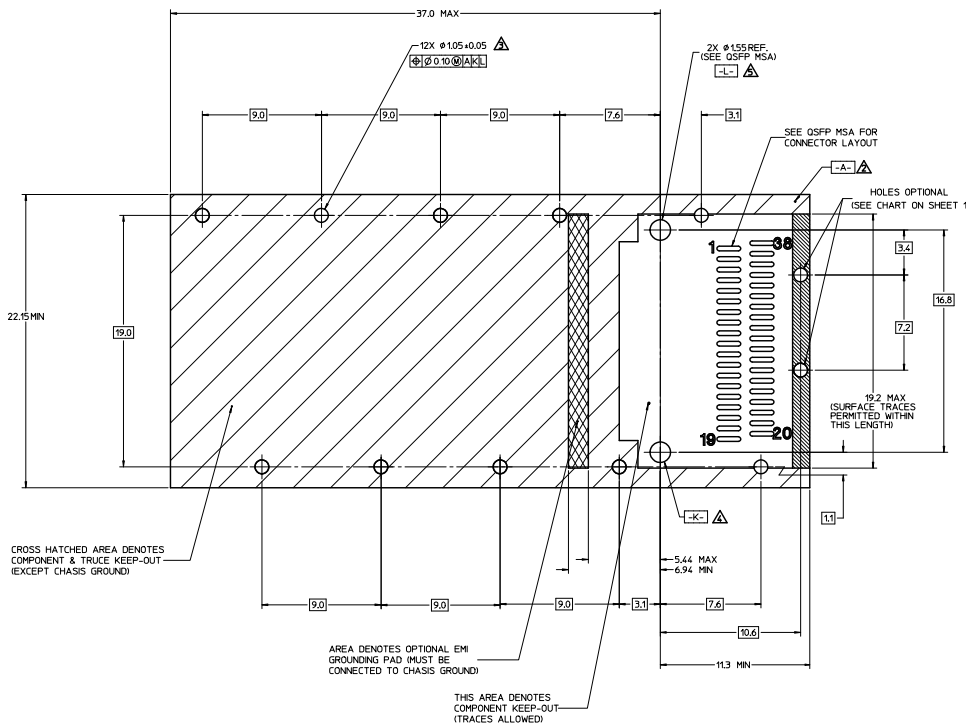


FINISHED ASSEMBLY P/N	COMPONENT P/N (CAGE)	# OF REAR LEGS	COMMENTS
747500021	747500100	2	
747500023	747500103	0	
747500024	747500104	2	NO HEAT SINK OPENING ON CAGE TOP

- NOTES:
- PRESS FIT LEGS 2.28mm (0.090") LONG
  - SINGLE SIDED BOARD THICKNESS  
 NOMINAL: 1.60 (0.062")  
 MINIMUM: 1.44 (0.057")  
 BELLY TO BELLY BOARD THICKNESS  
 NOMINAL: 2.30 (0.090")  
 MINIMUM: 2.07 (0.081")
  - MATERIAL: COPPER ALLOY (PLATED PRIOR TO CUTTING AND FORMING)  
 PLATING: NICKEL
  - REFERENCE DOCUMENTS:  
 PRODUCT SPECIFICATION: QSPF MSA
  - THIS PART MEETS THE RESTRICTION OF HAZARDOUS SUBSTANCES IN ELECTRICAL AND ELECTRONIC EQUIPMENT (ROHS) DIRECTIVE (2002/95/EC).

UPDATED DIMS LEADERS TO DIMS CHECKED BY: CHIRSCY DATE: 2008/10/29 CHECKED BY: SPRILLE DATE: 2008/10/29 APPROVED BY: RAHMHOOD DATE: 2010/11/01	QUALITY SYMBOLS	GENERAL TOLERANCES (UNLESS SPECIFIED)	DIMENSION STYLE	SCALE	DESIGN UNITS	THIRD ANGLE PROJECTION																													
	$\nabla=0$ $\nabla=0.05$	<table border="1"> <tr> <th></th> <th>mm</th> <th>INCH</th> </tr> <tr> <td>4 PLACES ±---</td> <td>±---</td> <td>±---</td> </tr> <tr> <td>3 PLACES ±---</td> <td>±---</td> <td>±---</td> </tr> <tr> <td>2 PLACES ±0.13</td> <td>±---</td> <td>±---</td> </tr> <tr> <td>1 PLACE ±0.25</td> <td>±---</td> <td>±---</td> </tr> </table>		mm	INCH	4 PLACES ±---	±---	±---	3 PLACES ±---	±---	±---	2 PLACES ±0.13	±---	±---	1 PLACE ±0.25	±---	±---	<table border="1"> <tr> <th>MM ONLY</th> <th>DATE</th> </tr> <tr> <td>DRAWN BY</td> <td>CHIRSCY</td> </tr> <tr> <td>DATE</td> <td>2007/07/23</td> </tr> <tr> <td>CHECKED BY</td> <td>DATE</td> </tr> <tr> <td>DATE</td> <td>2007/07/23</td> </tr> <tr> <td>APPROVED BY</td> <td>DATE</td> </tr> <tr> <td>DATE</td> <td>2010/11/01</td> </tr> </table>	MM ONLY	DATE	DRAWN BY	CHIRSCY	DATE	2007/07/23	CHECKED BY	DATE	DATE	2007/07/23	APPROVED BY	DATE	DATE	2010/11/01	4:1	METRIC	
		mm	INCH																																
	4 PLACES ±---	±---	±---																																
3 PLACES ±---	±---	±---																																	
2 PLACES ±0.13	±---	±---																																	
1 PLACE ±0.25	±---	±---																																	
MM ONLY	DATE																																		
DRAWN BY	CHIRSCY																																		
DATE	2007/07/23																																		
CHECKED BY	DATE																																		
DATE	2007/07/23																																		
APPROVED BY	DATE																																		
DATE	2010/11/01																																		
DRAFT WHERE APPLICABLE MUST REMAIN WITHIN DIMENSIONS		SEE TABLE	MATERIAL NO. DOCUMENT NO. SD-74750-0021		MOLEX INCORPORATED SHEET NO. 1 OF 4																														

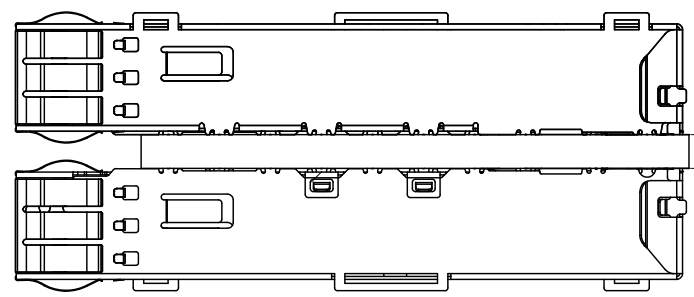
PCB LAYOUT FOR SINGLE SIDED APPLICATIONS



- NOTES:
1. SEE QSFP MSA SPECIFICATION FOR BEZEL LOCATION TOLERANCE
  2. DATUM -A- IS TOP SURFACE OF HOST BOARD PER MSA
  3. FINISHED HOLE SIZE (AFTER PLATING)
  4. DATUM -K- IS HOST BOARD THRU HOLE #1 TO ACCEPT CONNECTOR GUIDE POST PER MSA
  5. DATUM -L- IS HOST BOARD THRU HOLE #2 TO ACCEPT CONNECTOR GUIDE POST PER MSA
  6. DATUM -T- IS HARD STOP ON CAGE PER MSA

UPDATED DIMS ELC LVS 2010-02-05 G CHIRSHY 2008/08/28 CHIRSHY 2009/10/21 CHIRSHY 2009/10/21 APPROVED BY: RMAHMOOD DATE: 2010/11/01	QUALITY SYMBOLS	GENERAL TOLERANCES (UNLESS SPECIFIED)		DIMENSION STYLE	SCALE	DESIGN UNITS	THIRD ANGLE PROJECTION
	▽=0	4 PLACES ±---	INCH ±---	MM ONLY	1:1	METRIC	☉
	▽=0	3 PLACES ±---	INCH ±---	DRAWN BY: CHIRSHY DATE: 2007/07/23			
		2 PLACES ±0.13	INCH ±---	CHECKED BY: BRUSSELL DATE: 2007/07/23			
	1 PLACE ±0.25	INCH ±---	APPROVED BY: RMAHMOOD DATE: 2010/11/01				
DRAFT WHERE APPLICABLE MUST REMAIN WITHIN DIMENSIONS		SEE TABLE		DOCUMENT NO. SD-74750-0021		SHEET NO. 2 OF 4	
THIS DRAWING CONTAINS INFORMATION THAT IS PROPRIETARY TO MOLEX INCORPORATED AND SHOULD NOT BE USED WITHOUT WRITTEN PERMISSION							

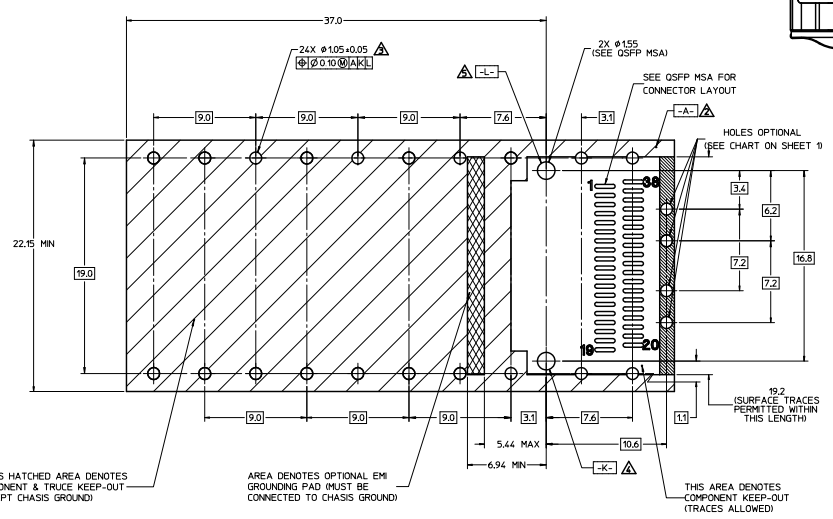
20 19 18 17 16 15 14 13 12 11 10 9 8 7 6 5 4 3 2 1



NOTE:  
BEZEL CUTOUT LOCATIONS FOR BELLY TO BELLY APPLICATIONS  
ARE DEPENDENT ON PCB THICKNESS

3.0 REF.

PCB LAYOUT FOR BELLY TO BELLY APPLICATIONS



CROSS HATCHED AREA DENOTES COMPONENT & TRACE KEEP-OUT (EXCEPT CHASSIS GROUND)

AREA DENOTES OPTIONAL EMI GROUNDING PAD (MUST BE CONNECTED TO CHASSIS GROUND)

THIS AREA DENOTES COMPONENT KEEP-OUT (TRACES ALLOWED)

- NOTES:
1. SEE QSFP MSA SPECIFICATION FOR BEZEL LOCATION TOLERANCE
  2. DATUM -A- IS TOP SURFACE OF HOST BOARD PER MSA
  3. FINISHED HOLE SIZE (AFTER PLATING)
  4. DATUM -K- IS HOST BOARD THRU HOLE #1 TO ACCEPT CONNECTOR GUIDE POST PER MSA
  5. DATUM -L- IS HOST BOARD THRU HOLE #2 TO ACCEPT CONNECTOR GUIDE POST PER MSA

UPDATED DIMS LEAD DOWNS G CHIRSCY 2009/10/29 CHKD:SRILE 2009/10/29 APPR:RMAHMOOD 2010/11/04 REV	QUALITY SYMBOLS	GENERAL TOLERANCES (UNLESS SPECIFIED)	DIMENSION STYLE	SCALE	DESIGN UNITS	THIRD ANGLE PROJECTION																																			
	$\nabla=0$ $\nabla=0.05$	<table border="1"> <thead> <tr> <th></th> <th>mm</th> <th>INCH</th> </tr> </thead> <tbody> <tr> <td>4 PLACES</td> <td>±---</td> <td>±---</td> </tr> <tr> <td>3 PLACES</td> <td>±---</td> <td>±---</td> </tr> <tr> <td>2 PLACES</td> <td>±0.13</td> <td>±---</td> </tr> <tr> <td>1 PLACE</td> <td>±0.25</td> <td>±---</td> </tr> </tbody> </table>		mm	INCH	4 PLACES	±---	±---	3 PLACES	±---	±---	2 PLACES	±0.13	±---	1 PLACE	±0.25	±---	<table border="1"> <thead> <tr> <th colspan="2">MM ONLY</th> <th colspan="2">DATE</th> </tr> </thead> <tbody> <tr> <td>DRAWN BY</td> <td>CHIRSCY</td> <td>2007/07/23</td> <td></td> </tr> <tr> <td>CHECKED BY</td> <td></td> <td>DATE</td> <td></td> </tr> <tr> <td>APPROVED BY</td> <td>BRUSSELL</td> <td>2007/07/23</td> <td></td> </tr> <tr> <td></td> <td></td> <td>DATE</td> <td></td> </tr> </tbody> </table>	MM ONLY		DATE		DRAWN BY	CHIRSCY	2007/07/23		CHECKED BY		DATE		APPROVED BY	BRUSSELL	2007/07/23				DATE		1:1	METRIC	
		mm	INCH																																						
	4 PLACES	±---	±---																																						
3 PLACES	±---	±---																																							
2 PLACES	±0.13	±---																																							
1 PLACE	±0.25	±---																																							
MM ONLY		DATE																																							
DRAWN BY	CHIRSCY	2007/07/23																																							
CHECKED BY		DATE																																							
APPROVED BY	BRUSSELL	2007/07/23																																							
		DATE																																							
DRAFT WHERE APPLICABLE MUST REMAIN WITHIN DIMENSIONS		SEE TABLE		DOCUMENT NO. SD-74750-0021 SHEET NO. 3 OF 4		TITLE: QSFP CAGE ASSEMBLY WITH SPRING FINGERS MOLEX INCORPORATED																																			

19 18 17 16 15 14 13 12 11 10 9 8 7 6 5 4 3 2 1

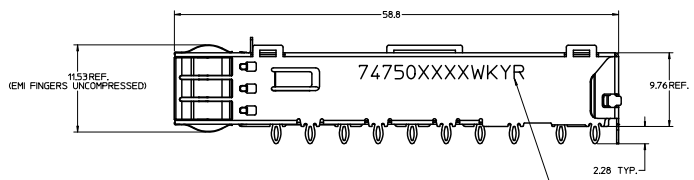
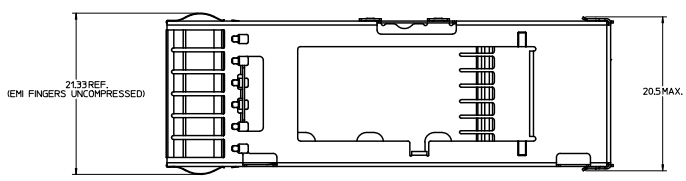
20 19 18 17 16 15 14 13 12 11 10 9 8 7 6 5 4 3 2 1

DATE	REV	DESCRIPTION
2007/07/23	A	INITIAL RELEASE
2007/08/06	B	CHANGED ALL TANGENT LINES FROM DASHED LINES TO SOLID LINES
2007/08/10	C	1. ADDED COMPONENT P/N COLUMN TO TABLE 2. ADDED "COMPONENT" TO NOTE IN BOTTOM VIEW ON SHEET 1 3. CHANGED TEXT IN MATERIAL NO. SECTION OF TITLE BLOCK TO READ "SEE TABLE"
2008/07/10	D	1. REMOVED COMMENTS FROM TABLE ON SHEET 1 2. ADDED "HOLES OPTIONAL" NOTE TO PCB LAYOUT ON SHEET 2 AND SHEET 3 3. ADDED 747500024 TO TABLE ON SHEET 1 AS WELL AS ISO VIEW 4. UPDATED "COMPONENT PART NUMBER AND DATE CODE" NOTE ON SHEET 1
2008/12/16	E	1. 20.4 DIMENSION WAS 20.38 REF. 2. 58.8 DIMENSION WAS 58.80 REF. 3. 2.28 TYP. DIMENSION WAS 2.28 REF. 4. 15.4 DIMENSION WAS 15.40 REF.
2009/04/13	F	1. REVISED COMPONENT P/N FOR MOLEX P/N 747500024 (CHANGED FROM 747540104 TO 747500104)
2010/10/29	G	1. 20.5 MAX DIMENSION WAS 20.4 2. 19.2 MAX DIMENSION WAS 16.2 MAX

UPDATED DIMS EC: LUCAS/2010-09-05 G: DENNIS/2010-09-05 CHKD: SPRUCE 2009/10/29 APPR: RYANHOOD 2010/11/04 REV:	QUALITY SYMBOLS	GENERAL TOLERANCES (UNLESS SPECIFIED)	DIMENSION STYLE	SCALE	DESIGN UNITS	THIRD ANGLE PROJECTION																							
	$\nabla=0$ $\nabla=0$	<table border="1"> <thead> <tr> <th></th> <th>mm</th> <th>INCH</th> </tr> </thead> <tbody> <tr> <td>4 PLACES</td> <td>±.001</td> <td>±.0005</td> </tr> <tr> <td>3 PLACES</td> <td>±.002</td> <td>±.001</td> </tr> <tr> <td>2 PLACES</td> <td>±.013</td> <td>±.005</td> </tr> <tr> <td>1 PLACE</td> <td>±.025</td> <td>±.010</td> </tr> </tbody> </table>		mm	INCH	4 PLACES	±.001	±.0005	3 PLACES	±.002	±.001	2 PLACES	±.013	±.005	1 PLACE	±.025	±.010	<table border="1"> <thead> <tr> <th>mm ONLY</th> <th>DATE</th> </tr> </thead> <tbody> <tr> <td>DRAWN BY</td> <td>CHIRSCHY 2007/07/23</td> </tr> <tr> <td>CHECKED BY</td> <td>BRUSSELL 2007/07/23</td> </tr> <tr> <td>APPROVED BY</td> <td>RYANHOOD 2010/11/04</td> </tr> </tbody> </table>	mm ONLY	DATE	DRAWN BY	CHIRSCHY 2007/07/23	CHECKED BY	BRUSSELL 2007/07/23	APPROVED BY	RYANHOOD 2010/11/04	1:1	METRIC	
		mm	INCH																										
	4 PLACES	±.001	±.0005																										
3 PLACES	±.002	±.001																											
2 PLACES	±.013	±.005																											
1 PLACE	±.025	±.010																											
mm ONLY	DATE																												
DRAWN BY	CHIRSCHY 2007/07/23																												
CHECKED BY	BRUSSELL 2007/07/23																												
APPROVED BY	RYANHOOD 2010/11/04																												
DESCRIPTION	DRAFT WHERE APPLICABLE MUST REMAIN WITHIN DIMENSIONS		TITLE <b>QSFP CAGE ASSEMBLY WITH SPRING FINGERS</b>	MATERIAL NO. <b>SEE TABLE</b>	DOCUMENT NO. <b>SD-74750-0021</b>	SHEET NO. <b>4 OF 4</b>																							

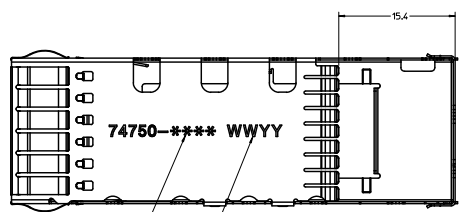
19 18 17 16 15 14 13 12 11 10 9 8 7 6 5 4 3 2 1

20 19 18 17 16 15 14 13 12 11 10 9 8 7 6 5 4 3 2 1



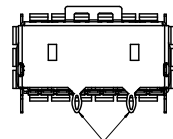
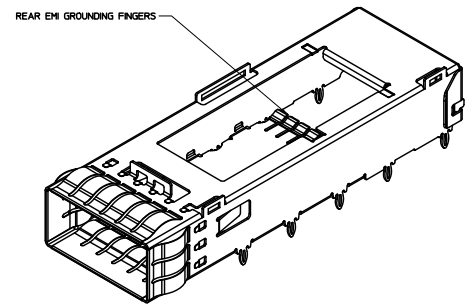
PART NO. AND WEEK/YEAR DATE CODE TO BE PRINTED ON SIDE OF COMPLETED CAGE ASSEMBLY APPROXIMATELY AS SHOWN. SEE TABLE BELOW FOR DATE CODE INFORMATION.

WEEK/YEAR DATE CODE TABLE	
WEEK - 01 THRU 52	EXAMPLE: 01 - FIRST WEEK OF YEAR 52 - LAST WEEK OF YEAR
YEAR - 10, 11, 12 ETC.	EXAMPLE: YEAR 2010 = 10



COMPONENT PART NUMBER (SEE TABLE)

COMPONENT DATE CODE



FINISHED ASSEMBLY P/N	COMPONENT P/N (CAGE)	# OF REAR LEGS	COMMENTS
747500092	747500112	2	OPEN TOP FOR HEAT SINK
747500093	747500113	0	OPEN TOP FOR HEAT SINK

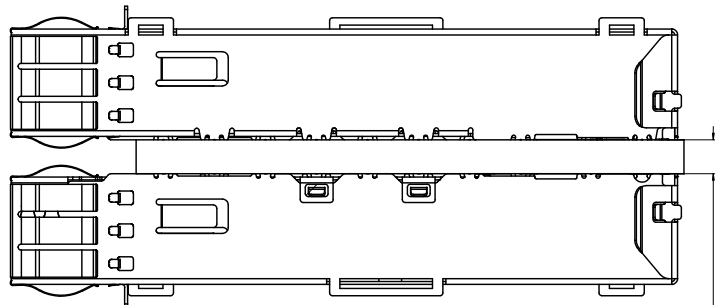
- NOTES:
- PRESS FIT LEGS 2.28mm [0.090"] LONG
  - SINGLE SIDED BOARD THICKNESS  
 NOMINAL: 1.60 [0.062"]  
 MINIMUM: 1.44 [0.057"]  
 BELLY TO BELLY BOARD THICKNESS  
 NOMINAL: 2.30 [0.090"]  
 MINIMUM: 2.07 [0.081"]
  - MATERIAL: COPPER ALLOY (PLATED PRIOR TO CUTTING AND FORMING)  
 PLATING: NICKEL
  - REFERENCE DOCUMENTS:  
 PRODUCT SPECIFICATION: QSFP MSA
  - THIS PART MEETS THE RESTRICTION OF HAZARDOUS SUBSTANCES IN ELECTRICAL AND ELECTRONIC EQUIPMENT (ROHS) DIRECTIVE (2002/95/EC).

INITIAL RELEASE BY: JLS/STP/0257 DATE: 2010/09/20 DRAWN BY: JERWIN DATE: 2010/09/20 CHECKED BY: CHIKOCHIRSKY DATE: 2010/09/20 APPROVED BY: APPEL/RAHMOOD DATE: 2010/12/20	QUALITY SYMBOLS	GENERAL TOLERANCES (UNLESS SPECIFIED)	DIMENSION STYLE	SCALE	DESIGN UNITS	THIRD ANGLE PROJECTION
	4 PLACES ± --- ± --- 3 PLACES ± --- ± --- 2 PLACES ± 0.13 ± --- 1 PLACE ± 0.25 ± --- ANGULAR ± 1°	DIM ONLY DRAWN BY: JERWIN DATE: 2010/09/20 CHECKED BY: DATE DATE: 2010/09/20 APPROVED BY: DATE DATE: 2010/12/20	MM ONLY	4:1	METRIC	QSF P CAGE ASSEMBLY W/ SPRING FINGERS
	DRAFT WHERE APPLICABLE MUST REMAIN WITHIN DIMENSIONS	SEE TABLE	MATERIAL NO.	DOCUMENT NO.	MOLEX INCORPORATED SD-74750-0092	
					SHEET NO. 1 OF 4	

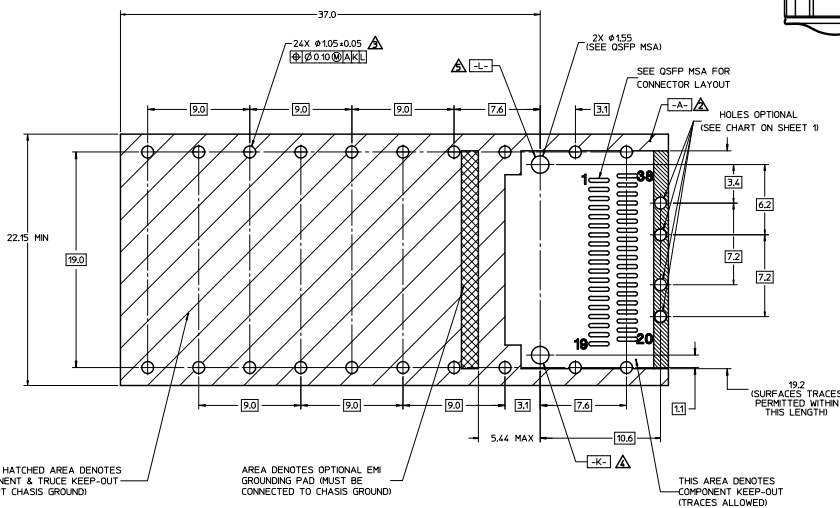
19 18 17 16 15 14 13 12 11 10 9 8 7 6 5 4 3 2 1



20 19 18 17 16 15 14 13 12 11 10 9 8 7 6 5 4 3 2 1



PCB LAYOUT FOR BELLY TO BELLY APPLICATIONS



NOTE:  
BEZEL CUTOUT LOCATIONS FOR BELLY TO BELLY APPLICATIONS  
ARE DEPENDENT ON PCB THICKNESS

2.3 REF.

CROSS HATCHED AREA DENOTES  
COMPONENT & TRACE KEEP-OUT  
(EXCEPT CHASSIS GROUND)

AREA DENOTES OPTIONAL EMI  
GROUNDING PAD (MUST BE  
CONNECTED TO CHASSIS GROUND)

THIS AREA DENOTES  
COMPONENT KEEP-OUT  
(TRACES ALLOWED)

NOTES:

1. SEE QSFP MSA SPECIFICATION FOR BEZEL LOCATION TOLERANCE
2. DATUM -A- IS TOP SURFACE OF HOST BOARD PER MSA
3. FINISHED HOLE SIZE (AFTER PLATING)
4. DATUM -K- IS HOST BOARD THRU HOLE #1 TO ACCEPT CONNECTOR GUIDE POST PER MSA
5. DATUM -L- IS HOST BOARD THRU HOLE #2 TO ACCEPT CONNECTOR GUIDE POST PER MSA

INITIAL RELEASE DATE: 2010/09/20 DRAWN BY: JERWIN CHECKED BY: CHIKOCHIRSKY APPROVED BY: RAHMOOD DATE: 2010/12/20	QUALITY SYMBOLS	GENERAL TOLERANCES (UNLESS SPECIFIED)	DIMENSION STYLE	SCALE	DESIGN UNITS	THIRD ANGLE PROJECTION															
	▽=0 ▽=0.05	<table border="1"> <thead> <tr> <th></th> <th>mm</th> <th>INCH</th> </tr> </thead> <tbody> <tr> <td>4 PLACES</td> <td>± 0.15</td> <td>± 0.006</td> </tr> <tr> <td>3 PLACES</td> <td>± 0.25</td> <td>± 0.010</td> </tr> <tr> <td>2 PLACES</td> <td>± 0.38</td> <td>± 0.015</td> </tr> <tr> <td>1 PLACE</td> <td>± 0.51</td> <td>± 0.020</td> </tr> </tbody> </table>		mm	INCH	4 PLACES	± 0.15	± 0.006	3 PLACES	± 0.25	± 0.010	2 PLACES	± 0.38	± 0.015	1 PLACE	± 0.51	± 0.020	MM ONLY	1:1	METRIC	<input checked="" type="checkbox"/> THIRD ANGLE <input type="checkbox"/> FIRST ANGLE
		mm	INCH																		
	4 PLACES	± 0.15	± 0.006																		
3 PLACES	± 0.25	± 0.010																			
2 PLACES	± 0.38	± 0.015																			
1 PLACE	± 0.51	± 0.020																			
DRAFT WHERE APPLICABLE MUST REMAIN WITHIN DIMENSIONS	SEE TABLE	DRAWN BY: JERWIN DATE: 2010/09/20 CHECKED BY: CHIRSKY DATE: 2010/09/20 APPROVED BY: RAHMOOD DATE: 2010/12/20	TITLE: QSFP CAGE ASSEMBLY W/ SPRING FINGERS MOLEX INCORPORATED	MATERIAL NO.: DOCUMENT NO.: SD-74750-0092	SHEET NO.: 3 OF 4																
THIS DRAWING CONTAINS INFORMATION THAT IS PROPRIETARY TO MOLEX INCORPORATED AND SHOULD NOT BE USED WITHOUT WRITTEN PERMISSION																					

10-Frame D.P. AH.T  
Rev. E 2006/04/15

19 18 17 16 15 14 13 12 11 10 9 8 7 6 5 4 3 2 1

