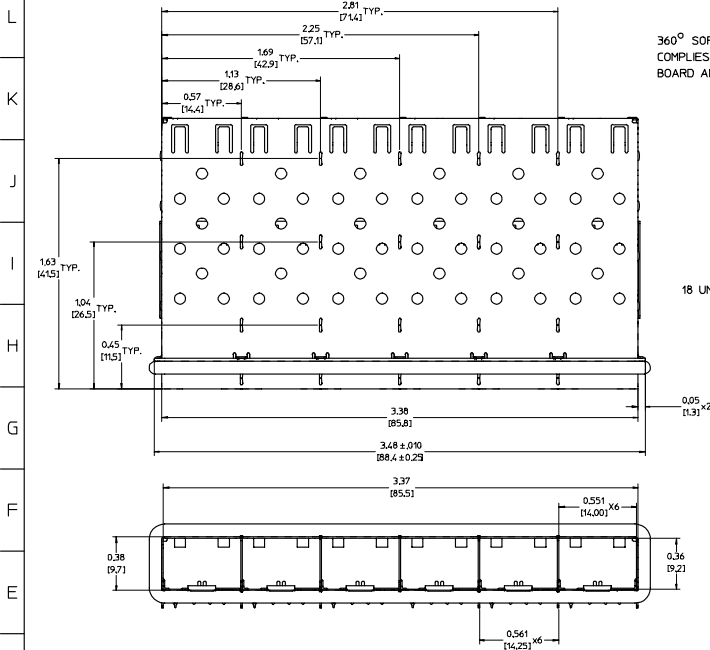
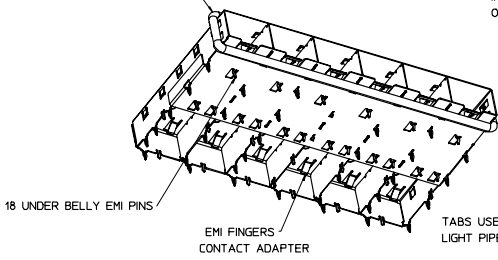


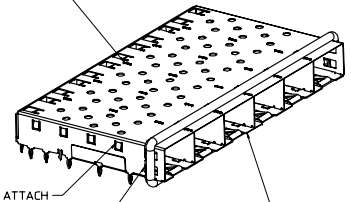
20 19 18 17 16 15 14 13 12 11 74747 9 8 7 6 5 4 3 2 1



360° SOFT EMI BEZEL GASKET COMPLIES WITH (SFP) MSA BOARD AND BEZEL LOCATIONS



INNER WALL TABS ARE COINED OVER BASE AND COVER FOR RIGIDITY



NOTES:

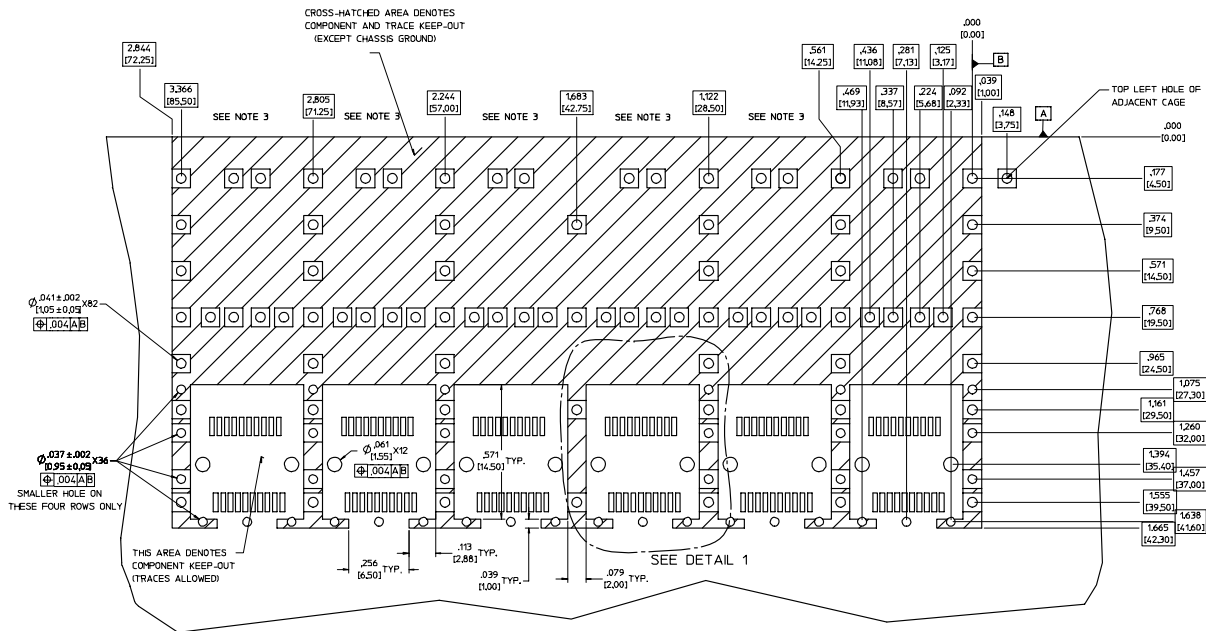
- PRESS FIT LEGS 0.120" LONG- 0.062 (1.57) MINIMUM PCB THICKNESS FOR SINGLE SIDED USE, 0.116 (3.00) MINIMUM PCB THICKNESS FOR BELLY TO BELLY USE. INSERTION FORCE INTO PCB: <100 LBS.
- MATERIAL: COPPER ALLOY
PLATING: PRE-PLATED NICKEL
- REFERENCE DOCUMENTS:
PRODUCT SPECIFICATION: PS-74728-000
COSMETIC SPECIFICATIONS: WI-HP-7-2774 AND WI-HFA-7-0093
- MATES WITH SERIES 74746, LIGHT PIPE COVER ASSEMBLY.
- THIS PART MEETS THE RESTRICTION OF HAZARDOUS SUBSTANCES IN ELECTRICAL AND ELECTRONIC EQUIPMENT (ROHS) DIRECTIVE (2002/95/EC).

ECT. NO.: US32007-01E3 DESIGNED BY: KSM/BC/COX 2004/07/27 CHECKED BY: JPP/PP/RMAH/MOD 2006/12/19 APPROVED BY:	QUALITY SYMBOLS 0 0	GENERAL TOLERANCES (UNLESS SPECIFIED) 4 PLACES ± --- ± --- 3 PLACES ± --- ± .005 2 PLACES ± 0.13 ± .007 1 PLACE ± 0.18 ± --- ANGULAR ± 1°	SCALE 3:1 DESIGN UNITS INCH DIMENSION STYLE IN/MM	THIRD ANGLE PROJECTION REVISE ON CAD ONLY
		DRAFT WHERE APPLICABLE MUST REMAIN WITHIN DIMENSIONS	DRAWN BY: KSM/BC/COX DATE: 2004/07/08 CHECKED BY: JPP/PP/RMAH/MOD DATE: 2006/12/19 APPROVED BY: BRUSSELL DATE: 2004/07/08	TITLE: 1X6 SFP GANGED CAGE ASSEMBLY, W/.090 OD GASKET MOLEX INCORPORATED MATERIAL NO.: 747470001 DOCUMENT NO.: SD-74747-001 SHEET NO.: 1 OF 5

19 18 17 16 15 14 13 12 11 10 9 8 7 6 5 4 3 2 1

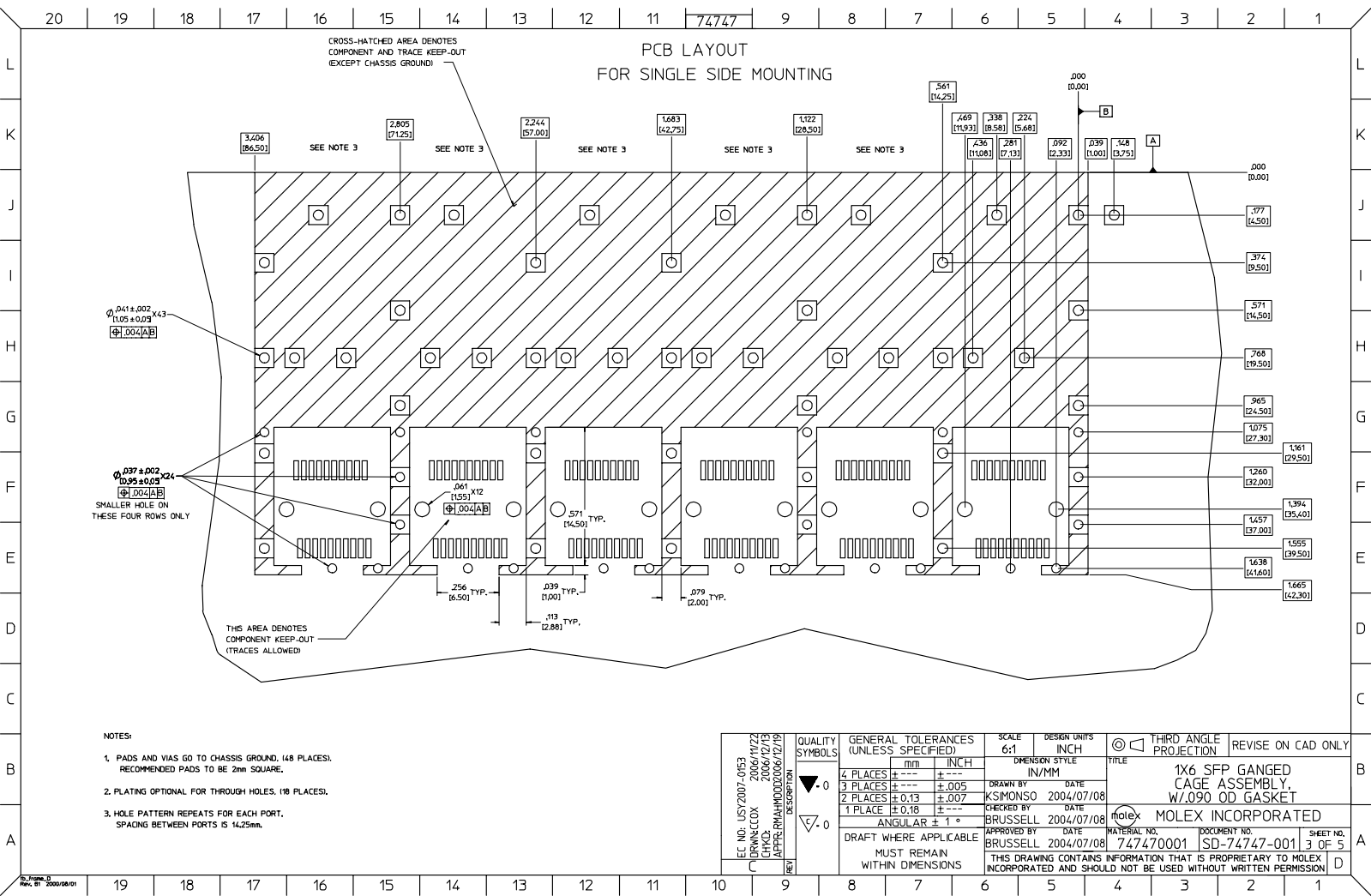
PCB LAYOUT
FOR BELLY TO BELLY MOUNTING

HOST CONNECTOR DETAIL



- NOTES:
- PADS AND VIAS GO TO CHASSIS GROUND. (94 PLACES).
RECOMMENDED PADS TO BE 2mm SQUARE.
 - PLATING OPTIONAL FOR THROUGH HOLES. (24 PLACES).
 - HOLE PATTERN REPEATS FOR EACH PORT.
SPACING BETWEEN PORTS IS 14.25mm.

EC. NO. US72007-01E3 DESIGNED BY: KSM/SC/COX CHECKED BY: CHIPP/RYAH/MD APPROVED BY: CHIPP/RYAH/MD DATE: 2004/12/13 DATE: 2006/12/13 DATE: 2006/12/13	QUALITY SYMBOLS 0 0	GENERAL TOLERANCES (UNLESS SPECIFIED) 4 PLACES ± .005 3 PLACES ± .007 2 PLACES ± 0.13 1 PLACE ± 0.18	SCALE 5:1 DESIGN UNITS INCH DIMENSION STYLE IN/MM	THIRD ANGLE PROJECTION REVISE ON CAD ONLY
		DRAFT WHERE APPLICABLE MUST REMAIN WITHIN DIMENSIONS	DRAWN BY: KSM/SC/COX DATE: 2004/07/08 CHECKED BY: BRUSSELL DATE: 2004/07/08 APPROVED BY: BRUSSELL DATE: 2004/07/08	TITLE: 1X6 SFP GANGED CAGE ASSEMBLY, W/.090 OD GASKET MOLEX INCORPORATED MATERIAL NO. 747470001 DOCUMENT NO. SD-74747-001 SHEET NO. 2 OF 5



20 19 18 17 16 15 14 13 12 11 74747 9 8 7 6 5 4 3 2 1

DATE	REV	CHANGES	COMMENTS
3/1/2004	1	PRELIMINARY	N/A
07/08/2004	A	INITIAL RELEASE	CHANGED GASKET TO 0.090 DIA AND CHANGED LOCATION.
01/19/2006	B	ADDED PCB AND BEZEL LAYOUT. ADDED NOTE FOR GASKET SEAM PLACEMENT.	N/A
10/11/2006	C	UPDATED NOTE #2, DELETED NOTE REGARDING PLATING.	N/A

ECT. NO. US3/2007-0163 DRAWING NO. 2004/12/22 CHECKED BY: 2006/12/13 APPROVER: RMAHMOOD/2006/12/19	QUALITY SYMBOLS ▽-0 ▽-0	GENERAL TOLERANCES (UNLESS SPECIFIED) 4 PLACES ±.005 ±.005 3 PLACES ±.005 ±.005 2 PLACES ±0.13 ±.007 1 PLACE ±0.18 ±.005 ANGULAR ±.1°	SCALE 1:1 DESIGN UNITS INCH DIMENSION STYLE IN/MM	THIRD ANGLE PROJECTION REVISE ON CAD ONLY
		DRAFT WHERE APPLICABLE MUST REMAIN WITHIN DIMENSIONS	DRAWN BY DATE K.S.MONSO 2004/07/08 CHECKED BY DATE BRUSSELL 2004/07/08 APPROVED BY DATE BRUSSELL 2004/07/08	TITLE 1X6 SFP GANGED CAGE ASSEMBLY, W/.090 OD GASKET MOLEX INCORPORATED

THIS DRAWING CONTAINS INFORMATION THAT IS PROPRIETARY TO MOLEX INCORPORATED AND SHOULD NOT BE USED WITHOUT WRITTEN PERMISSION

L
K
J
I
H
G
F
E
D
C
B
A

L
K
J
I
H
G
F
E
D
C
B
A

19 18 17 16 15 14 13 12 11 10 9 8 7 6 5 4 3 2 1